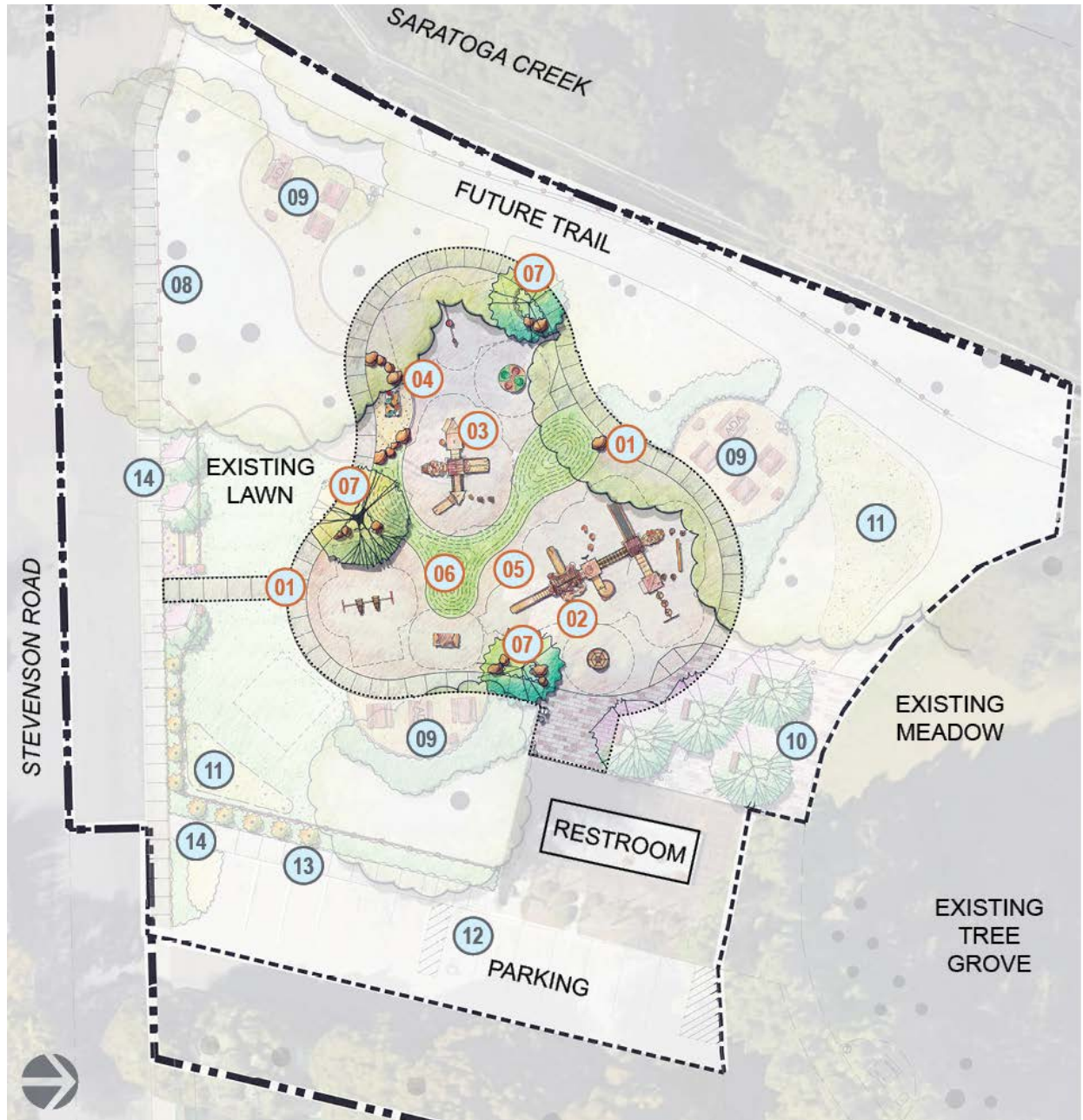


Homeridge Park Playground Schematic Design (Proposed)





Scope within budget:

- 01 Concrete Path/Tricycle Path
- 02 Play Equipment Age 6-12
- 03 Play Equipment Age 2-5
- 04 Sand Play
- 05 Play Surfacing
- 06 Berm
- 07 Planting area

Additional Scope Items:

- 08 Wood Rail Fence
- 09 Group Picnic Area
- 10 Arrival Plaza
- 11 Storm-water Treatment Area
- 12 Parking Lot Re-striping
- 13 Accessible Concrete Path
- 14 New Plantings



A Tree House



F River Rock Climber



B Expression Swing



G Sand Play



C Tree Stump & Log



D Berm Climber



E Tree Swing



Elements of Play

- Increases understanding of efficient body positioning and control, principles of gravity, equilibrium, base of support, and counterbalancing
- Promotes muscular strength and endurance throughout the entire body

- Enhances core stability, dynamic balance, and leg and hip flexibility
- Provides whole-body and spatial awareness experiences

- Improves muscular strength and endurance
- Promotes hand-eye coordination and rhythmic body movement

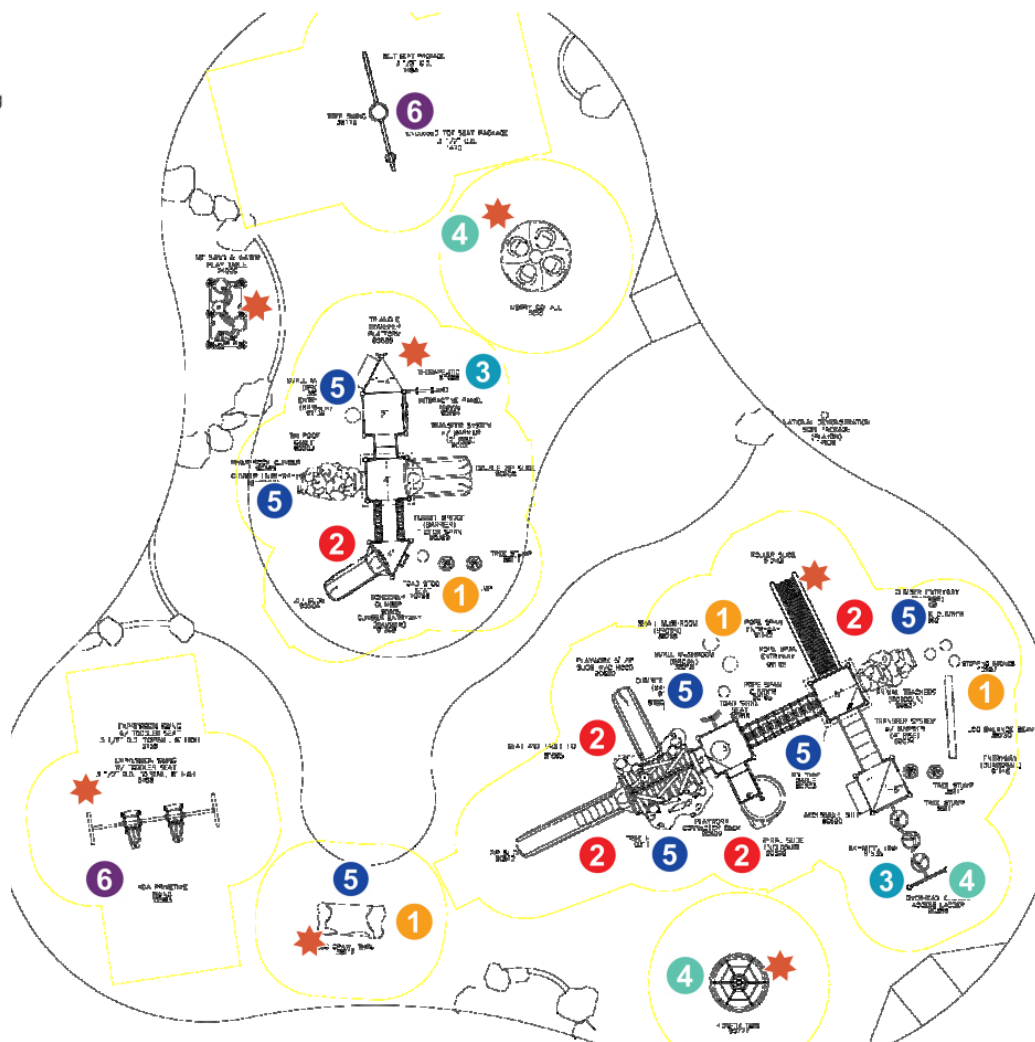
- Develops kinesthetic awareness and posture control
- Improves understanding of speed, force, and directional qualities of movement

- Enhances spatial awareness and coordination
- Fosters whole-body muscular strength, endurance, and flexibility

- Promotes aerobic fitness, muscular force, and whole-body awareness
- Emphasizes the importance of timely transfer during movement



INCLUSIVE PLAY COMPONENTS



Homeridge Park Playground

Attachment 2

Elements of Play	Existing Elements	Level of Play	Existing Capacity	Proposed Elements	Level of Play	Proposed Capacity	
Balancing	1	B=1 I=0 A=0	3	7	B=2 I=2 A=3	14	+13
Sliding	2	B=0 I=2 A=0	2	5	B=3 I=2 A=2	5	+3
Brachiating	2	B=1 I=2 A=0	2	2	B=1 I=0 A=1	2	
Spinning	0	B=0 I=0 A=0	0	3	B=1 I=1 A=1	16-20	+20
Climbing	4	B=4 I=0 A=0	4	7	B=2 I=3 A=2	7	+3
Swinging	2	B=2 I=0 A=0	2	4	B=2 I=2 A=2	6	+4
Running/Free Play	0	N/A	N/A	3	N/A	N/A	+3
Total:	11		13	31		50-54	+43
Inclusive Play Elements	0	B=0 I=0 A=0	0	12	B=6 I=4 A=2	12	+12

Level of Play: B: Beginner I: Intermediate A: Advanced

Play Area (Ages 6-12)



Play Area (Ages 2-5)

