



Ad hoc Advisory Districting Committee Minutes Tuesday, July 5, 2018

Committee Members in attendance:

Yuki Ikezi
Stephen Ricossa
Barbara A. Estrada

City Staff in attendance:

Brian Doyle, City Attorney
Nadine Nader, Assistant City Manager
Kendra Davis, Management Analyst

Approximately 70 members of the public attended this meeting.

1. Call to Order and Roll Call

Chairperson Ikezi called the meeting of the Ad-hoc Advisory Districting Committee Meeting to order at 4:32 pm in the Redwood Room of the Santa Clara Central Library. All members of the Committee were present during Roll Call.

2. Public Presentations

No member of the public made presentations.

3. Review of Court Order Received on June 26, 2018 and Legal Requirements

City Attorney Doyle noted that this is the second public hearing to gather input per the Court Order issued on June 26, 2018. He also explained that on June 26, the Council granted the City Manager authority to convene this committee to hold the four public hearings required by the Court, as well as authority to take actions as required by the court order to meet deadlines.

Based on information from a Case Management Conference between the Court, the Plaintiffs and the City of Santa Clara that was held on July 2, 2018, updates were made to the original schedule created and advertised by the City. Those changes are as follows:

- Both the plaintiffs and the City must provide maps with proposed districts on July 6th;
- The hearing date was moved up from July 23rd to July 18th, so it is unclear how that will affect the originally scheduled community meeting on July 21st, as the information gathered there will not be used at the hearing; and
- The Court will make a decision by July 23rd.

City Attorney Doyle outlined the responsibilities of the Ad-hoc Committee as holding the public hearings; listening and gathering public comment; reviewing the demographer's recommendations; and, based on public input, providing a recommendation on a district map and sequencing of the elections. He then answered Committee questions.

4. **Public Hearing to receive input and form a recommendation on District Boundaries and Election Sequencing for Council consideration in response to Court Order:**

A. Presentation by Professional Demographer

A copy of Dr. Gobalet's PowerPoint from this meeting is attached.

B. Public testimony

The following members of the public addressed the Committee:

Keith Adams
Bern Steves
Bruce
Leslie Kelsay
Pat Wadell
Charles Sedlacek
Carlos Puig
David Cary
Diane Harrison
Paul Johnson
Dave Kadlecek
Anthony Becker
Paul Creger
Kimberly Cowell
Umar Kamal
Barbara McCune
Stephen Peck
Judy Garton-Zavesky
Kevin Park
Hosam Haggag

Motion was made by Committee Member Ricossa, seconded and unanimously carried, to close public hearing.

Motion was made by Committee Member Estrada, seconded and unanimously carried, that the City Attorney Doyle submit to the Court a total of five maps without a recommendation from the Ad-hoc Advisory Districting Committee: two 6-District Draft Plans (Draft Plans 1 and 3), two 3-District Draft Plans based on the 6-District Draft Plans 1 and 3 (following the creation of such maps by the professional demographer), and the previously recommended 2-District Map (recommended by the Ad-hoc Advisory Districting Committee – April 12, 2018).

A Committee discussed followed regarding sequencing. One member of the public spoke on this item: Hosam Haggag.

Motion was made by Committee Member Ricossa, seconded and unanimously carried, to continue the discussion on sequencing until the July 11, 2018 Committee meeting.

Motion was again made by Committee Member Ricossa, seconded and unanimously carried, to close public hearing.

5. Adjournment

Motion was made by Committee Member Estrada, seconded and unanimously carried, to adjourn.

Next Meeting: July 11, 2018, 4:30 p.m. City Hall, City Council Chambers, 1500 Warburton Avenue, Santa Clara

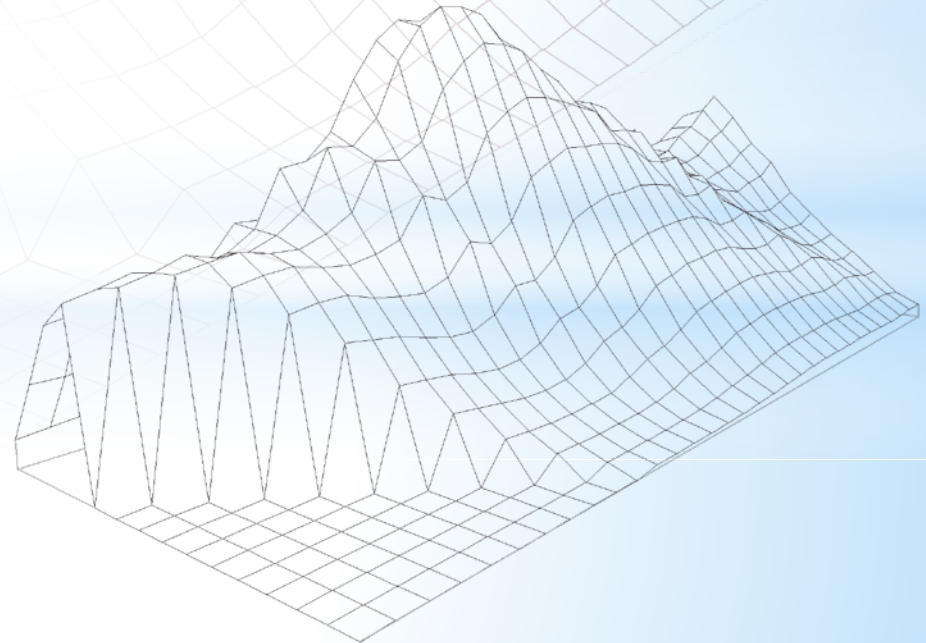
DRAFT

City Council Election District Boundaries Three Draft Plans – Six Council Districts

City of Santa Clara

Jeanne Gobalet, Ph.D.
Lapkoff & Gobalet
Demographic Research, Inc.
www.Demographers.com

July 5, 2018, Public Hearing



Districting Criteria used by Demographers

- **Population Equality – Census 2010 data**
- **Federal Voting Rights Act**
- **State Elections Code**
- **Other criteria**

Traditional Districting Criteria

California Elections Code

District lines may be drawn that consider:

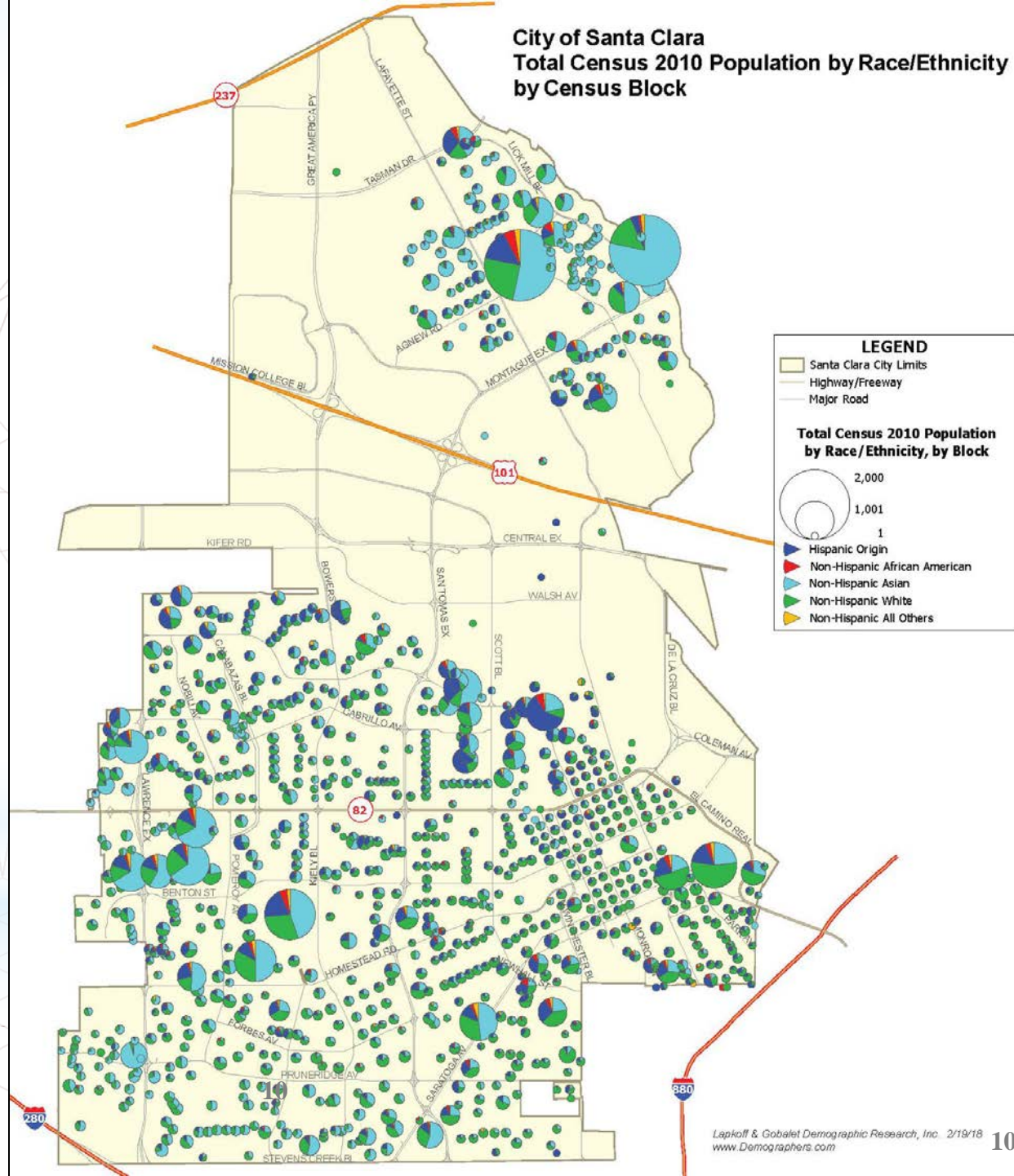
- **Topography (e.g., rivers, natural barriers)**
- **Geography (e.g., municipal boundaries)**
- **Cohesiveness, contiguity, integrity, & compactness of territory**
- **“Communities of interest,” which may be:**
 - **Geographic communities (e.g., neighborhoods)**
 - **Socioeconomic groups (e.g., Federal Voting Rights Act protected groups, etc.)**

In addition, when drawing election districts, we try to use major roads and other identifiable features as boundaries.

Census 2010 distribution of the City's population by race/ethnicity (by Census block)

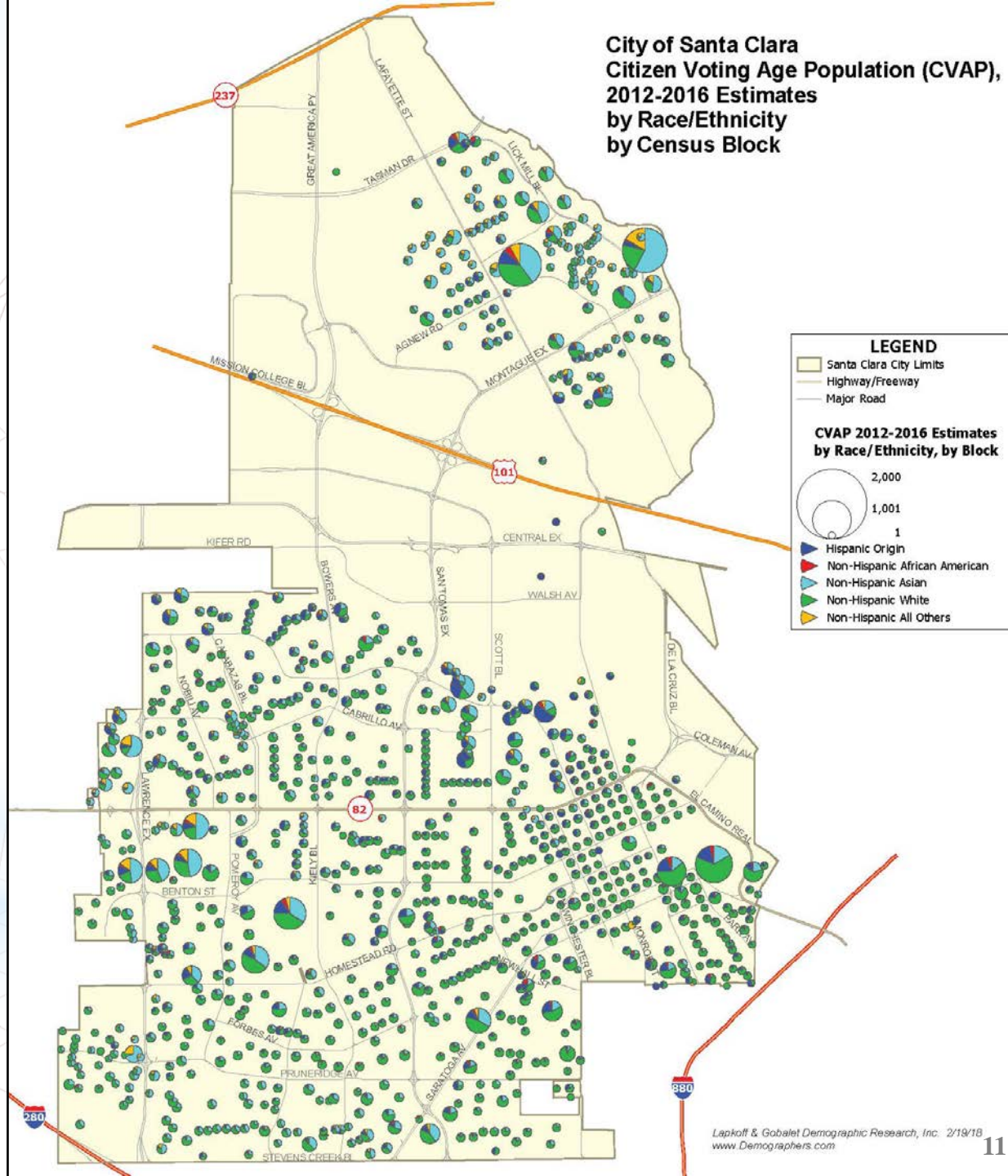
Data from the U.S. Census
2010 Redistricting Data
Release (PL94-171)

Race/ethnic identity is
chosen by Census survey
respondents



Estimated CVAP (Citizen Voting Age Population) by Census Block

City of Santa Clara
Citizen Voting Age Population (CVAP),
2012-2016 Estimates
by Race/Ethnicity
by Census Block



CVAP estimates for Census blocks are from a special tabulation of American Community Survey 2012-16 data by the U.S. Census Bureau. These estimates are from small samples and are inexact.

<http://statewidedatabase.org/>

Background: 2-District Plan

Rejected by voters
(Measure A)

City of Santa Clara Council District Plan
Recommended by the Ad-Hoc Advisory
Districting Committee April 12, 2018

Boundaries follow centerlines of
El Camino Real and Lawrence Expressway.

LEGEND

 Recommended Plan

 Park

 School

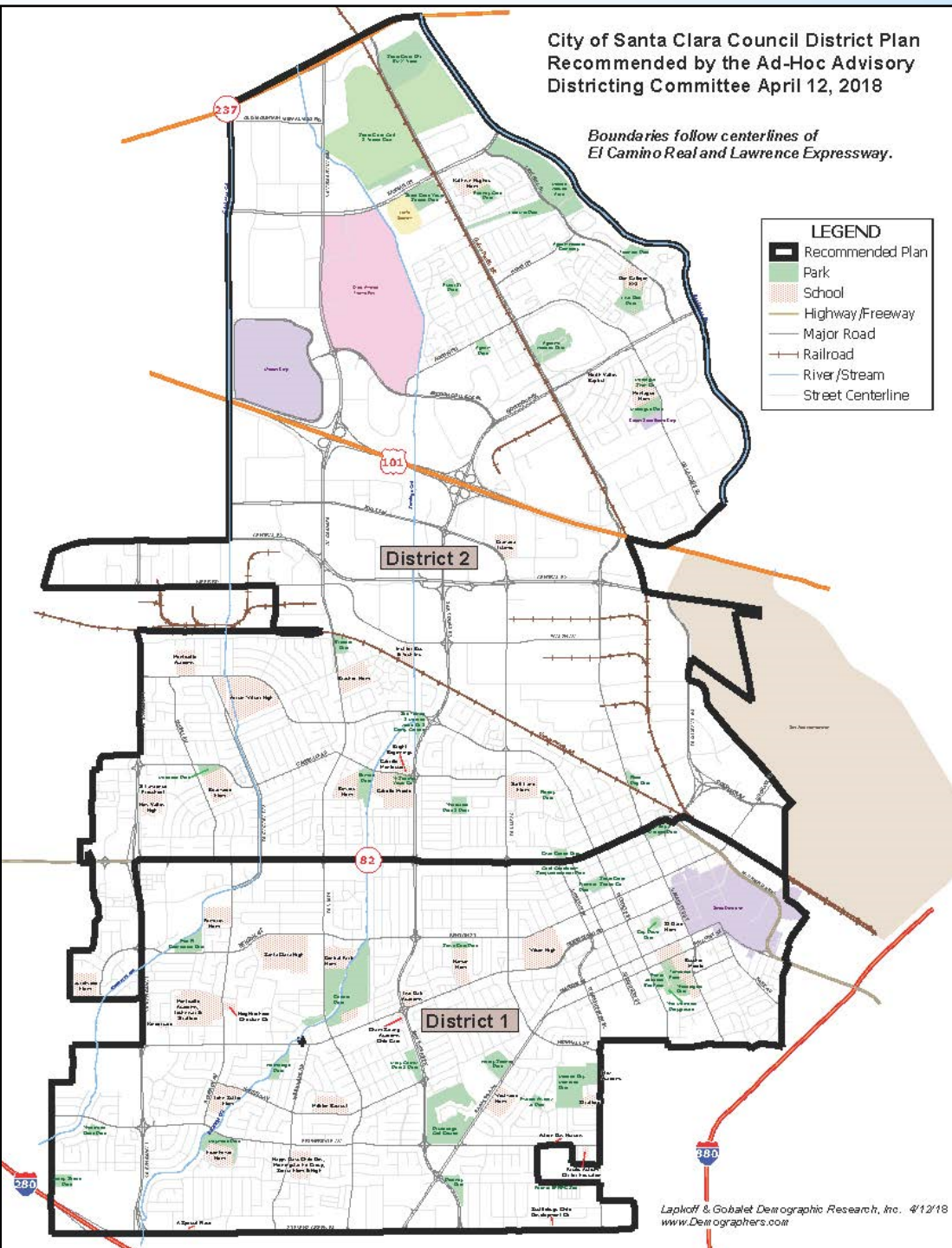
 Highway/Freeway

 Major Road

 Railroad

 River/Stream

 Street Centerline

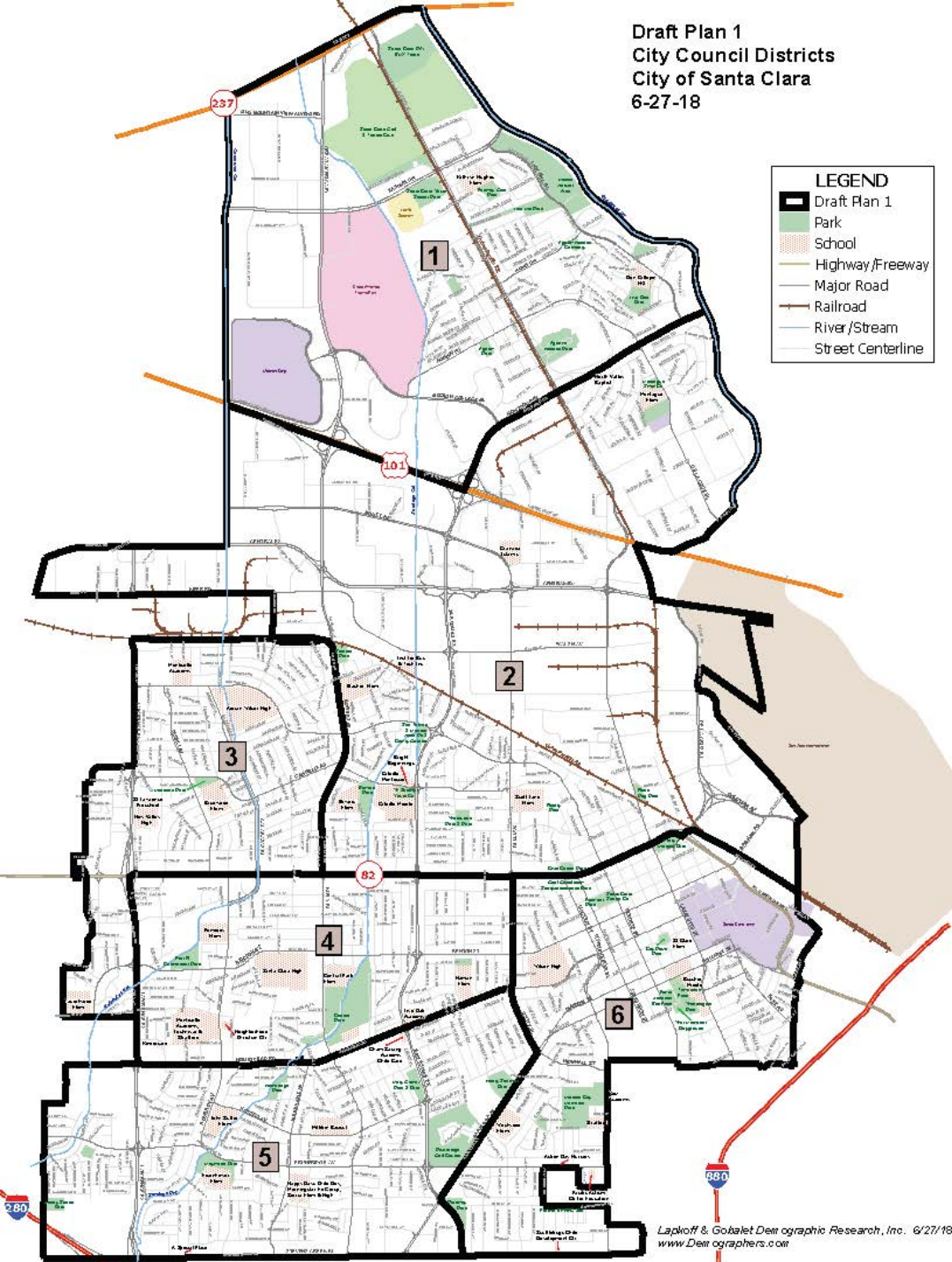


Draft Plans

Draft Plans 1, 2, 3:

- Each has 6 Council districts with (relatively) equal 2010 total populations
- All three plans use the May 8, 2018, 2-district plan boundary (mostly following El Camino Real)
- Plans built from Census blocks aggregated to construct Pieces
- Boundaries are major thoroughfares, when possible

In all three plans, Districts 3 and 4 have the smallest populations to take into account estimated post-2017 population growth from new housing.



Draft Plan 1

6 Council Districts

Note boundary between D1 and D2 (in the north) – Draft Plan 2 shows a different possibility

2 of these 3 seats could be open for the Nov 2018 election (Districts 1, 5, and 6 have incumbents with terms expiring in 2020):

*District 2
District 3
District 4*

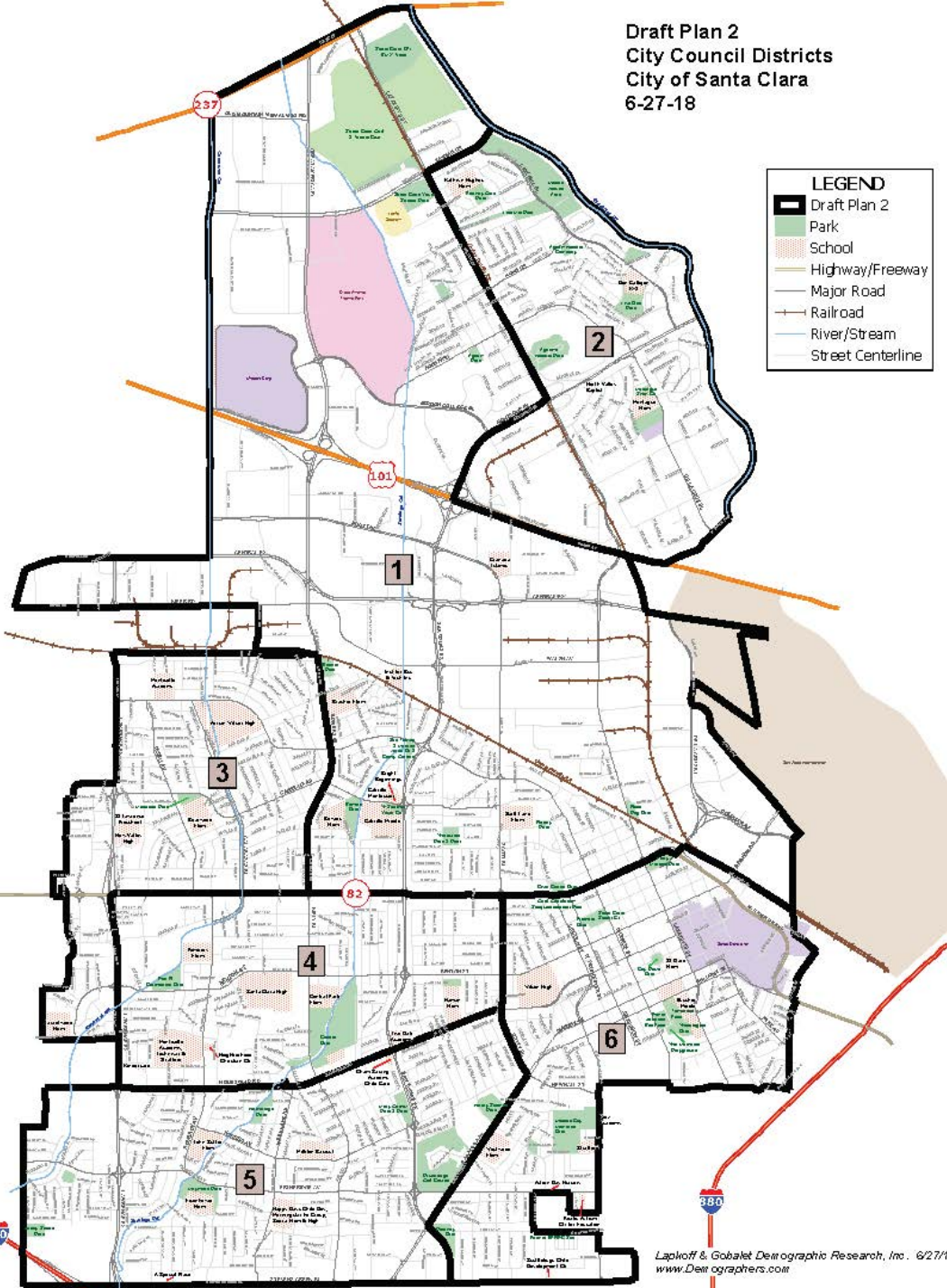
Draft Plan 1 data

Plan deviation = 7.5%

Draft Plan 1											
6 Council Districts											
District	Census 2010 total population	Deviation (ideal district pop. = 19,411)	% Deviation	NH Asian	NH White	Hispanic origin	NH Black	NH Native American AK native	NH Hawaiian Pacific Islander	NH Other race	NH Other mixed race
1	19,271	-140	-0.7%	11,811	4,221	2,213	591	41	72	83	239
2	20,070	659	3.4%	6,877	5,779	6,125	690	89	223	53	234
3	18,614	-797	-4.1%	7,811	5,815	4,005	404	99	160	110	210
4	18,678	-733	-3.8%	7,542	6,577	3,610	536	85	84	66	178
5	19,874	463	2.4%	7,861	8,897	2,386	393	63	74	48	152
6	19,961	550	2.8%	3,779	10,737	4,250	720	115	132	60	168
Total	116,468	1,456	7.5%	45,681	42,026	22,589	3,334	492	745	420	1,181
Citizen Voting Age Population (CVAP) - estimated 2012-2016											
District	est total CVAP 2012-16			est NH Asian CVAP 2012-16	est NH White CVAP 2012-16	est Hispanic CVAP 2012-16	est NH Other CVAP 2012-16	Row Total			
1	9,707			51%	35%	11%	4%	100%			
2	10,823			27%	42%	27%	4%	100%			
3	10,018			33%	46%	19%	2%	100%			
4	10,567			31%	50%	17%	3%	100%			
5	11,495			27%	60%	10%	2%	100%			
6	13,427			13%	67%	17%	4%	100%			
Total	66,036			29%	51%	17%	3%	100%			

Deviation when taking into account the estimated post-2010 population growth from new housing = 11.2%

Draft Plan 2
City Council Districts
City of Santa Clara
6-27-18



Draft Plan 2

6 Council Districts

**Different D1-D2
boundary,
otherwise the
same as Draft
Plan 1**

*2 of these 3 seats could be open for
the Nov 2018 election (Districts 2,
5, and 6 have incumbents with
terms expiring in 2020):*

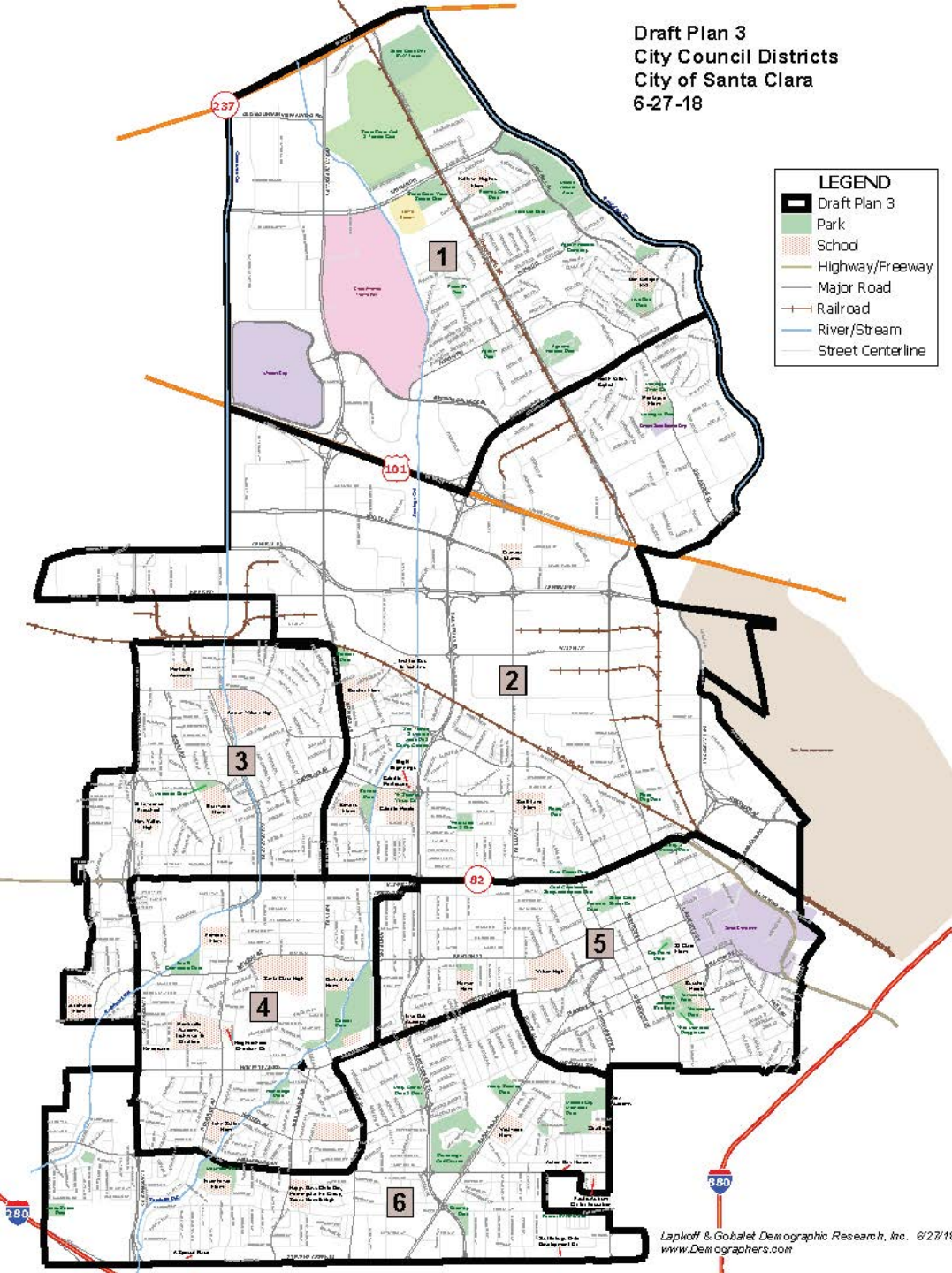
*District 1
District 3
District 4*

Draft Plan 2 data

Plan deviation = 8.8%

Draft Plan 2											
6 Council Districts											
District	Census 2010 total population	Deviation (ideal district pop. = 19,411)	% Deviation	NH Asian	NH White	Hispanic origin	NH Black	NH Native American AK native	NH Hawaiian Pacific Islander	NH Other race	NH Other mixed race
1	20,314	903	4.7%	7,660	5,650	5,828	660	75	174	55	212
2	19,027	-384	-2.0%	11,028	4,350	2,510	621	55	121	81	261
3	18,614	-797	-4.1%	7,811	5,815	4,005	404	99	160	110	210
4	18,678	-733	-3.8%	7,542	6,577	3,610	536	85	84	66	178
5	19,874	463	2.4%	7,861	8,897	2,386	393	63	74	48	152
6	19,961	550	2.8%	3,779	10,737	4,250	720	115	132	60	168
Total	116,468	1,700	8.8%	45,681	42,026	22,589	3,334	492	745	420	1,181
Citizen Voting Age Population (CVAP) - estimated 2012-2016											
District	est total CVAP 2012-16			est NH Asian CVAP 2012-16	est NH White CVAP 2012-16	est Hispanic CVAP 2012-16	est NH Other CVAP 2012-16	Row Total			
1	10,768			30%	41%	26%	4%	100%			
2	9,762			48%	36%	12%	4%	100%			
3	10,018			33%	46%	19%	2%	100%			
4	10,567			31%	50%	17%	3%	100%			
5	11,495			27%	60%	10%	2%	100%			
6	13,427			13%	67%	17%	4%	100%			
Total	66,036			29%	51%	17%	3%	100%			

Deviation when taking into account the estimated post-2010 population growth from new housing = 12.5%



Draft Plan 3

6 Council Districts

Nextdoor neighborhood boundaries used to the extent possible

Same D1 and D2 as Draft Plan 1

D4, D5, and D6 from the differ from the other plans

District 2 or 3 could be open for the Nov 2018 election (Districts 1, 4, 5, and 6 have incumbents with terms expiring in 2020)

Draft Plan 3 data

Plan deviation = 8.8%

Draft Plan 3											
6 Council Districts											
District	Census 2010 total population	Deviation (ideal district pop. = 19,411)	% Deviation	NH Asian	NH White	Hispanic origin	NH Black	NH Native American AK native	NH Hawaiian Pacific Islander	NH Other race	NH Other mixed race
1	19,271	-140	-0.7%	11,811	4,221	2,213	591	41	72	83	239
2	20,070	659	3.4%	6,877	5,779	6,125	690	89	223	53	234
3	18,614	-797	-4.1%	7,811	5,815	4,005	404	99	160	110	210
4	18,649	-762	-3.9%	7,719	6,819	3,205	503	87	81	66	169
5	19,535	124	0.6%	3,917	10,137	4,343	652	119	130	64	173
6	20,329	918	4.7%	7,546	9,255	2,698	494	57	79	44	156
Total	116,468	1,715	8.8%	45,681	42,026	22,589	3,334	492	745	420	1,181
Citizen Voting Age Population (CVAP) - estimated 2012-2016											
District	est total CVAP 2012-16			est NH Asian CVAP 2012-16	est NH White CVAP 2012-16	est Hispanic CVAP 2012-16	est NH Other CVAP 2012-16	Row Total			
1	9,707			51%	35%	11%	4%	100%			
2	10,823			27%	42%	27%	4%	100%			
3	10,018			33%	46%	19%	2%	100%			
4	10,527			31%	51%	15%	3%	100%			
5	12,980			14%	65%	18%	3%	100%			
6	11,982			25%	61%	11%	3%	100%			
Total	66,036			29%	51%	17%	3%	100%			

Deviation when taking into account the estimated post-2010 population growth from new housing = 12.0%

Estimates of Nov. 2016 Voter Registration and Turnout for each Draft Plan

(next slide)

- Data from: California Statewide Database
<http://statewidedatabase.org/>
- Registered and actual voter counts by precinct were assigned to Council Districts (some precincts are split by District boundaries and estimates are not precise)
- Surname *estimates* are based on lists developed over the last 30+ years; error margins are not known, but vary by surname category.

Draft Plan 1																				
Nov 2016 registered to vote, by surname					Asian subgroups' share of total registered:						Nov 2016 actual voters, by surname				Asian subgroups' share of total actual voters:					
District	Total	Asian surname	Hispanic surname	All other surnames	Korean surname	Japanese surname	Chinese surname	Asian Indian surname	Vietnamese surname	Filipino surname	Total	Asian surname	Hispanic surname	All other surnames	Korean surname	Japanese surname	Chinese surname	Asian Indian surname	Vietnamese surname	Filipino surname
1	6,633	32%	15%	53%	2%	1%	9%	9%	5%	6%	5,320	32%	14%	54%	1%	1%	10%	9%	5%	6%
2	8,508	23%	20%	57%	2%	1%	5%	6%	6%	5%	6,673	23%	19%	58%	1%	1%	4%	6%	5%	4%
3	7,964	23%	17%	59%	2%	1%	7%	5%	5%	3%	6,391	23%	17%	61%	2%	2%	7%	6%	5%	2%
4	7,305	21%	15%	64%	3%	1%	6%	4%	4%	3%	5,949	20%	14%	66%	2%	1%	6%	4%	3%	3%
5	10,553	22%	11%	67%	2%	2%	8%	5%	3%	2%	8,872	22%	10%	68%	2%	2%	8%	5%	3%	2%
6	10,125	12%	15%	72%	1%	1%	4%	3%	2%	2%	8,096	12%	15%	72%	1%	1%	3%	3%	2%	2%
Total	51,088	22%	15%	63%	2%	1%	6%	5%	4%	3%	41,301	21%	15%	64%	2%	1%	6%	5%	4%	3%
Draft Plan 2																				
1	9,611	25%	19%	56%	1%	1%	6%	6%	6%	5%	7,586	25%	18%	57%	1%	1%	5%	7%	5%	5%
2	5,530	31%	15%	54%	2%	1%	9%	8%	5%	6%	4,407	31%	14%	55%	2%	1%	9%	9%	4%	6%
3	7,964	23%	17%	59%	2%	1%	7%	5%	5%	3%	6,391	23%	17%	61%	2%	2%	7%	6%	5%	2%
4	7,305	21%	15%	64%	3%	1%	6%	4%	4%	3%	5,949	20%	14%	66%	2%	1%	6%	4%	3%	3%
5	10,553	22%	11%	67%	2%	2%	8%	5%	3%	2%	8,872	22%	10%	68%	2%	2%	8%	5%	3%	2%
6	10,125	12%	15%	72%	1%	1%	4%	3%	2%	2%	8,096	12%	15%	72%	1%	1%	3%	3%	2%	2%
Total	51,088	22%	15%	63%	2%	1%	6%	5%	4%	3%	41,301	21%	15%	64%	2%	1%	6%	5%	4%	3%
Draft Plan 3																				
1	6,633	32%	15%	53%	2%	1%	9%	9%	5%	6%	5,320	32%	14%	54%	1%	1%	10%	9%	5%	6%
2	8,508	23%	20%	57%	2%	1%	5%	6%	6%	5%	6,673	23%	19%	58%	1%	1%	4%	6%	5%	4%
3	7,964	23%	17%	59%	2%	1%	7%	5%	5%	3%	6,391	23%	17%	61%	2%	2%	7%	6%	5%	2%
4	8,249	22%	13%	65%	3%	2%	7%	5%	4%	2%	6,745	21%	12%	67%	2%	2%	7%	5%	4%	2%
5	9,544	13%	17%	70%	1%	1%	4%	3%	2%	2%	7,653	13%	16%	71%	1%	1%	4%	3%	2%	2%
6	10,190	20%	11%	69%	2%	2%	7%	5%	3%	2%	8,519	20%	11%	69%	1%	2%	7%	5%	2%	2%
Total	51,088	22%	15%	63%	2%	1%	6%	5%	4%	3%	41,301	21%	15%	64%	2%	1%	6%	5%	4%	3%

Information for Election Sequencing

Council Member Assignments: Draft Plans 1, 2, and 3

Title	Name	Piece #	Draft Plan			Term Expires
			1	2	3	
Councilmember	Debi Davis	29	5	5	6	2020
Councilmember	Pat Kolstad	17	3	3	3	2018
Councilmember	Patricia M. Mahan	28	6	6	5	2020
Councilmember	Teresa O'Neill	35	5	5	4	2020
Vice Mayor	Kathy Watanabe	6	1	2	1	2020
Councilmember	(Vacant seat)					2018
Mayor	Lisa M. Gillmor	30	5	5	6	2018

Comments /Questions?

Jeanne Gobalet, Ph.D.

<http://santaclaraca.gov/residents/court-ordered-council-districting-process>

**Lapkoff & Gobalet
Demographic Research, Inc.**