

# Emergency Services Coordination



# President's Day Flood 2017, San Jose

Photo Credit: LA Times



# Response Structure

Incident Command System (ICS)

Standardized Emergency Management System (SEMS)

National Incident Management System (NIMS)

Emergency Operations Center (EOC)

Department Operation Centers (DOCs)

Based on Watershed and Water Utility functions



# Potential Emergencies (examples)

## Watershed

- ▶ Flooding
- ▶ Levee or other facility issue

## Water Utility

- ▶ Water contamination
- ▶ Water supply disruption
- ▶ Pipeline damage
- ▶ Underground storage subsidence

## Water Utility and Watershed

- ▶ Dam Failure
- ▶ Earthquake



# Communication and Notification

## How does the Water District communicate with Cities and County?

- Operational Area Calls
- Direct communication, emergency managers
- Written Communications

## Stream and Reservoir Monitoring

- Hydrology, Hydraulics and Geomorphology Unit
- Automated Local Evaluation in Real Time (ALERT)





# Resources (personnel)



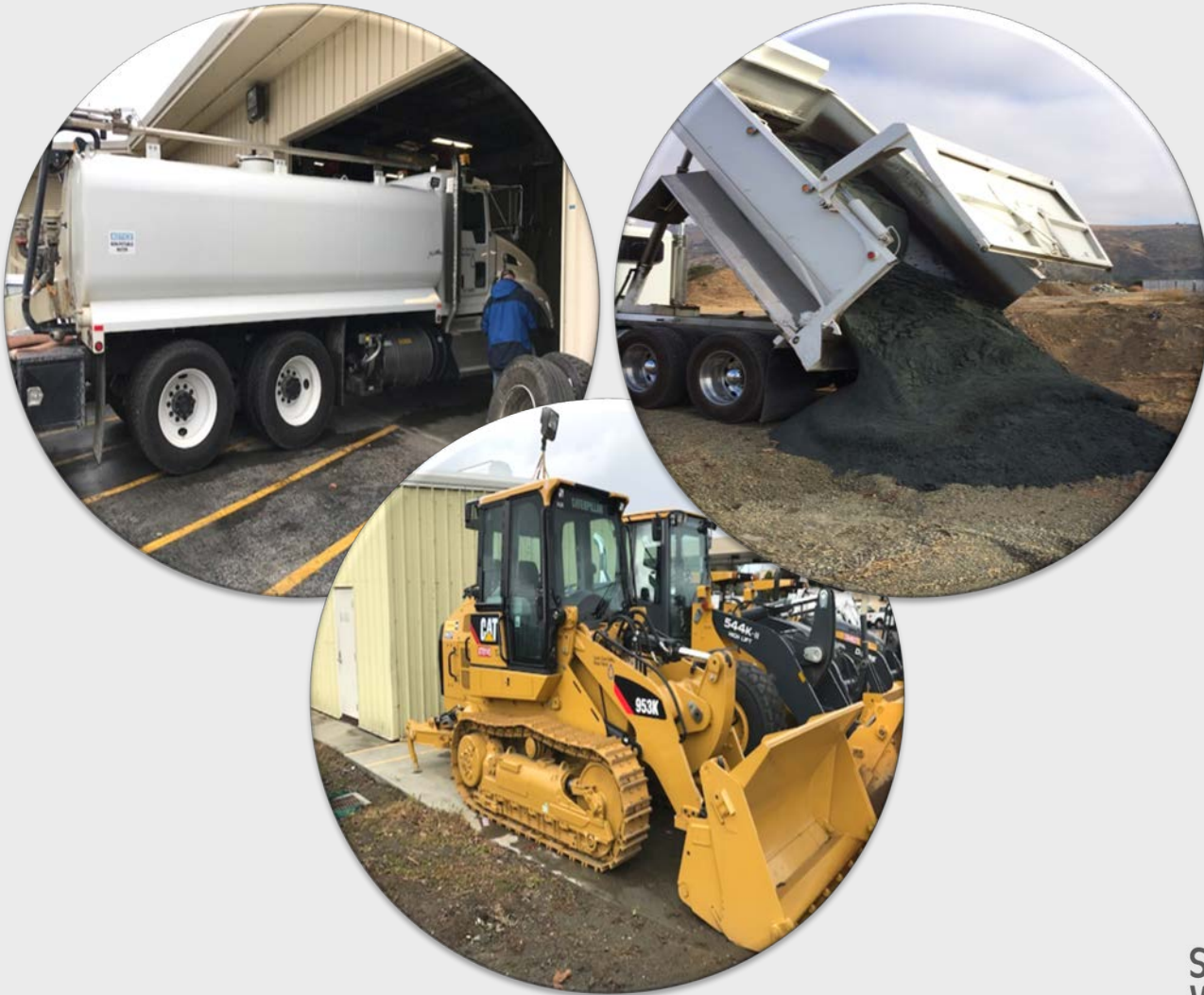
- ▶ 160+ assigned to EOC
- ▶ Technical Experts (Watershed and Water Utility)
- ▶ Public Information Branch
  - ▶ Communication redundancy

# Resources (equipment)

- ▶ Excavators
- ▶ Dump Trucks
- ▶ Loaders
- ▶ Excavators
- ▶ Cranes
- ▶ More



# Resources (equipment)





# Emergency Action Plans (EAPs)

- ▶ Scenario Specific – streams, dams, locations
- ▶ Inundation Maps and Downstream Contact Lists
- ▶ Activation Levels, scenario data and monitoring
- ▶ Lessons Learned from 2017 flood
- ▶ Multi-Agency Coordination (MAC)
- ▶ Coordination with Emergency Operations Plan (EOP)



# Emergency Services and Security Unit

- Manager, 5 staff assigned to emergency services within unit
- Emergency Planning, Training and Exercise
- EOC Readiness
- City and County Collaboration and Coordination