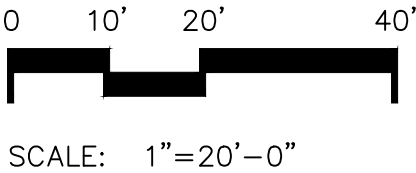
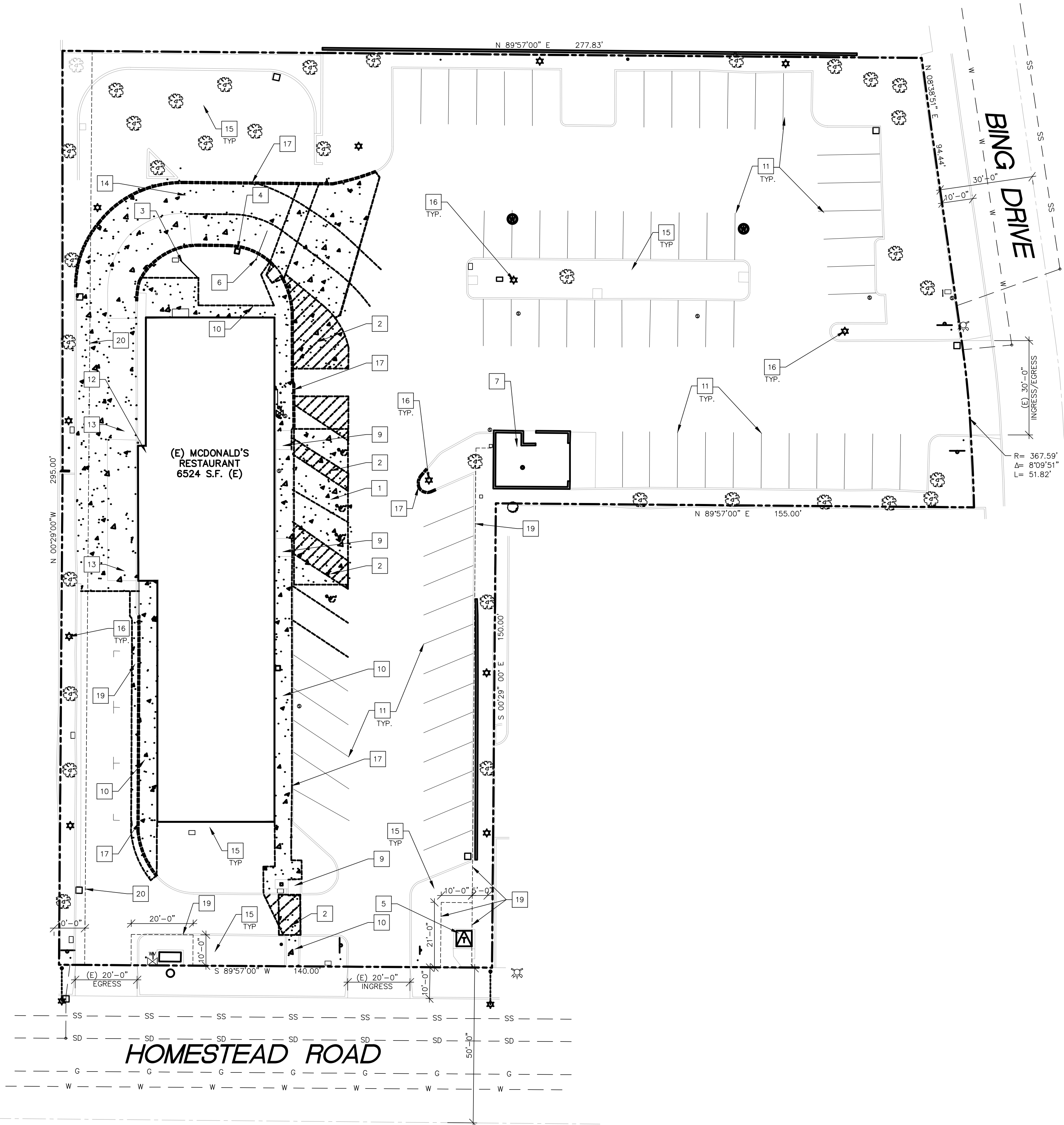
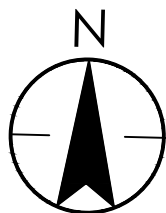


\\jst279-101\workgroup\2014\workgroup\2014048002\architecture\drawing\SP0 - Demo Site.dwg Dimscale: 120 LTScale: 0.5 Plot: [Time: Jul 26, 2018 - 10:47am Login: emiller]
Pre-plot: [AUG 09, 2011 09:50-ogutierrez] Xref: "x_bdr" x_site mages: "aerial.jpg" site.jpg

1 SITE DEMOLITION PLAN
SP0 1" = 20'-0"



DEMOLITION NOTES

- GC TO COORDINATE WITH McDONALD'S PROJECT MANAGER THE REMOVAL AND SALVAGE OF SIGNAGE, AND MENUBOARDS.
- GC TO LOCATE AND CAP EXISTING UTILITY LATERALS
- GC TO ENSURE THAT PROJECT DEMOLITION DEBRIS IS PROPERLY RECYCLED OR DISPOSED OF PER THE LOCAL JURISDICTION'S REQUIREMENTS.
- ALL (E) PAVEMENT MARKINGS TO BE REMOVED. SEAL COAT WHERE PAVEMENT MARKINGS ARE REMOVED, TYP.

KEY NOTES

- REMOVE (E) ASPHALT PAVING FOR ADA UPGRADES AND GRADING, SEE CIVIL DRAWINGS FOR DETAILS
- (E) STRIPING AND PAVEMENT MARKINGS TO BE REMOVED AS SHOWN
- (E) MENUBOARD TO BE REMOVED, REMOVE CONCRETE BASE, CONDUIT
- REMOVE (E) SPEAKER BOX
- (E) TRANSFORMER TO REMAIN, PROTECT IN PLACE
- REMOVE (E) CLEARANCE BAR
- (E) TRASH ENCLOSURE TO REMAIN, PAINT TO MATCH BUILDING
- (E) SIGN TO REMAIN
- (E) CURB RAMP TO BE RESURFACED/REMOVED TO ACHIEVE COMPLIANT GRADES. SALVAGE (E) TRUNCATED DOME PAVERS TO BE REUSED
- (E) CONC. TO BE RESURFACED/REMOVED TO ACHIEVE COMPLIANT GRADES. VERIFY (E) CONDITION IN FIELD.
- (E) PARKING STRIPING TO REMAIN
- DEMO AREA FOR NEW CASH BOOTH ADDITION
- SAW CUT & REMOVE PORTION OF (E) PAVING FOR (N) LOOP DETECTORS IF NOT ALREADY PRESENT.
- REMOVE PORTION OF (E) ASPHALT PAVING FOR NEW DRIVE-THRU, SEE CIVIL DRAWINGS FOR GRADING DETAILS
- (E) LANDSCAPING TO REMAIN. REPAIR AND REFRESH AS REQUIRED
- (E) YARD LIGHTING TO REMAIN. TYP
- REMOVE PORTION OF (E) CURB AS INDICATED, SEE CIVIL DRAWINGS FOR DETAILS
- REMOVE PORTION OF (E) ASPHALTIC CONCRETE AS INDICATED, SEE CIVIL DRAWINGS FOR DETAILS
- FULL DEPTH AC REPLACEMENT 2'-0" FROM FACE OF CURB SEE CIVIL DRAWINGS FOR DETAILS
- (E) ELECTRICAL AND COMMUNICATION UTILITIES EASEMENT
- (E) SANITARY SEWER AND STORM DRAIN EASEMENT

PARKING INFORMATION (EXISTING)

TOTAL SPACES	ACCESSIBLE	4 SPACES
75	STANDARD	71 SPACES

PLAN LEGEND

COL	= CENTER LINE
COL	= COLUMN
COL	= EXISTING
F.O.C.	= FACE OF CURB
F.O.C.	= FACE OF STUD
F.O.C.	= FACE OF FOUNDATION
P.O.C.	= POINT OF CURVATURE
R.O.W.	= RADIUS
R.O.W.	= RIGHT OF WAY
SH	= SHEET
SIM	= SIMILAR
TYP	= TYPICAL
FSE	= FINISH SLAB ELEVATION

=====	EXISTING TO REMAIN
=====	CURB OR STRIPING TO BE REMOVED
=====	ASPHALT PAVING TO BE REMOVED
=====	CONCRETE PAVING TO BE REMOVED
=====	LANDSCAPING TO BE REMOVED

PREPARED FOR: McDonald's USA, LLC

©2012 McDonald's USA, LLC

These drawings and specifications are the confidential and proprietary information of McDonald's USA, LLC. They are prepared for use on this specific site in conjunction with its issue date and are not to be used for any other project without the written authorization of McDonald's USA, LLC. Reproduction of these drawings for reference or example on another project requires the services of properly licensed architects and engineers. Reproduction of the contract documents for reuse on another project is not authorized.

BRAND REVIEW

05/07/18

PLANNING

05/07/18

PERMIT

BID

CONSTRUCTION

004-0166

DRAWING TITLE: DEMOLITION SITE PLAN

PROJECT ADDRESS: 3509 HOMESTEAD RD, SANTA CLARA, CA 95051

SHEET NO.

2014048002

PLOT SCALE: 1"=1' MODA-BOR

Stantec
Stantec Architecture Inc.
38 Technology Drive
Irvine, CA U.S.A. 92618
Tel. 949.923.6000
Fax. 949.923.6190
www.stantec.com

©2012 McDonald's USA, LLC

McDonald's USA, LLC

These drawings and specifications are the confidential and proprietary information of McDonald's USA, LLC. They are prepared for use on this specific site in conjunction with its issue date and are not to be used for any other project without the written authorization of McDonald's USA, LLC. Reproduction of these drawings for reference or example on another project requires the services of properly licensed architects and engineers. Reproduction of the contract documents for reuse on another project is not authorized.

BRAND REVIEW

05/07/18

PLANNING

05/07/18

PERMIT

BID

CONSTRUCTION

004-0166

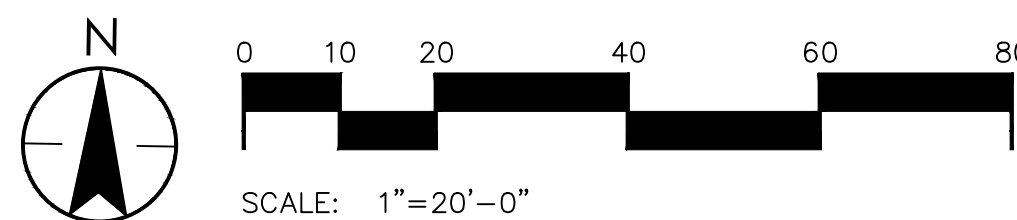
DRAWING TITLE: DEMOLITION SITE PLAN

PROJECT ADDRESS: 3509 HOMESTEAD RD, SANTA CLARA, CA 95051

SHEET NO.

2014048002

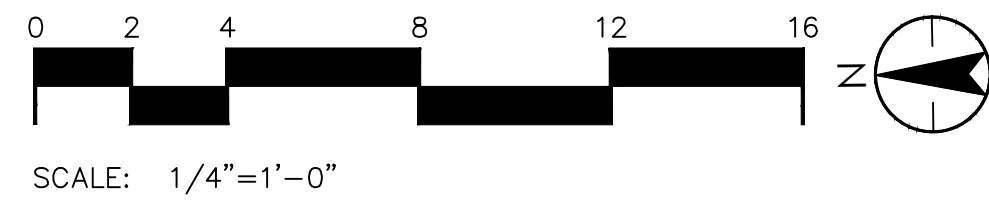
PLOT SCALE: 1"=1' MODA-BOR



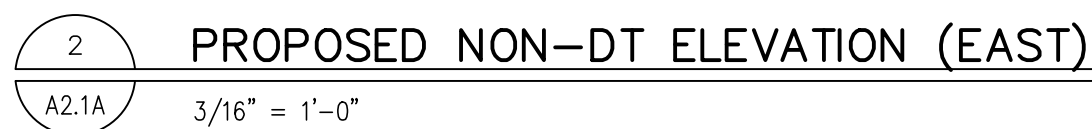
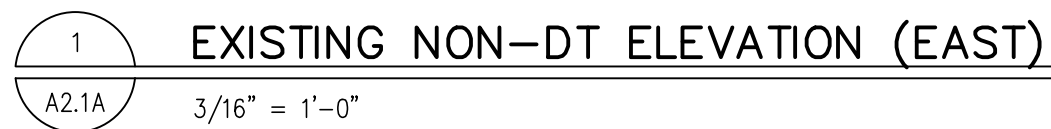
 **Stantec**

Stantec Architecture Inc.
38 Technology Drive
Irvine, CA U.S.A. 92618

Tel. 949.923.6000
Fax. 949.923.6199
www.stantec.com

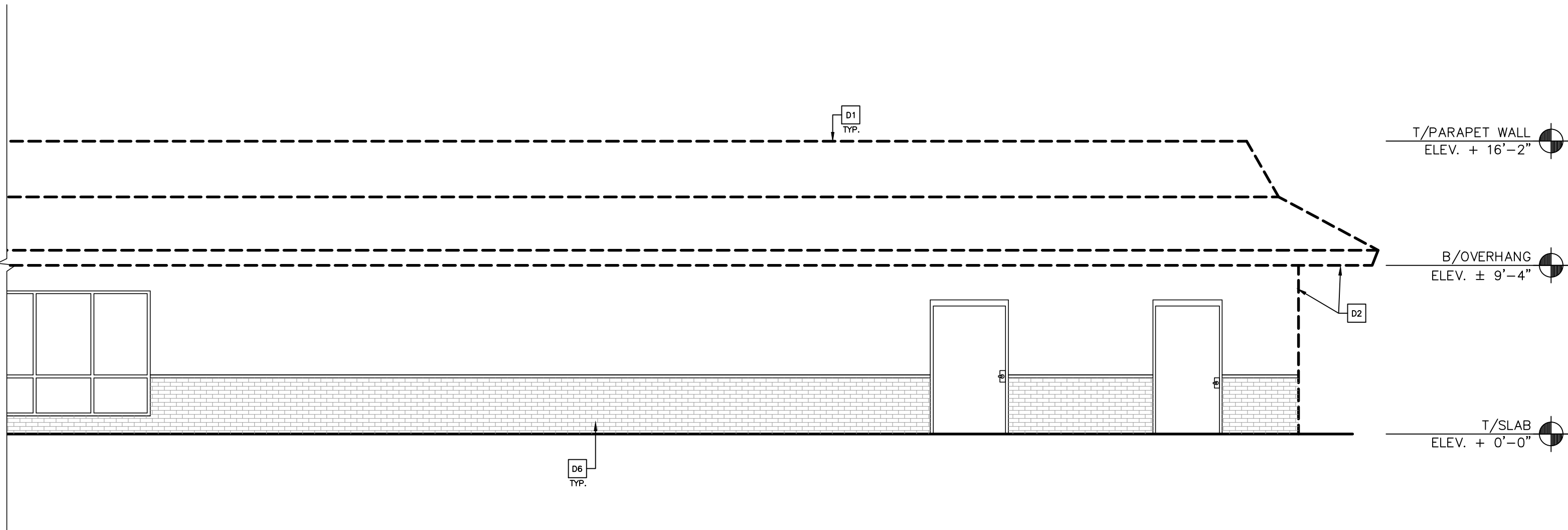


GENERAL NOTES	KEYNOTES		SYMBOL LEGEND		BR																																																																																																																																																																																																																																																																																																																																																																																																																																																																																																																																																																																																									
---------------	----------	--	---------------	--	----	--	--	--	--	--	--	--	--	--	--	--	--	--	--	--	--	--	--	--	--	--	--	--	--	--	--	--	--	--	--	--	--	--	--	--	--	--	--	--	--	--	--	--	--	--	--	--	--	--	--	--	--	--	--	--	--	--	--	--	--	--	--	--	--	--	--	--	--	--	--	--	--	--	--	--	--	--	--	--	--	--	--	--	--	--	--	--	--	--	--	--	--	--	--	--	--	--	--	--	--	--	--	--	--	--	--	--	--	--	--	--	--	--	--	--	--	--	--	--	--	--	--	--	--	--	--	--	--	--	--	--	--	--	--	--	--	--	--	--	--	--	--	--	--	--	--	--	--	--	--	--	--	--	--	--	--	--	--	--	--	--	--	--	--	--	--	--	--	--	--	--	--	--	--	--	--	--	--	--	--	--	--	--	--	--	--	--	--	--	--	--	--	--	--	--	--	--	--	--	--	--	--	--	--	--	--	--	--	--	--	--	--	--	--	--	--	--	--	--	--	--	--	--	--	--	--	--	--	--	--	--	--	--	--	--	--	--	--	--	--	--	--	--	--	--	--	--	--	--	--	--	--	--	--	--	--	--	--	--	--	--	--	--	--	--	--	--	--	--	--	--	--	--	--	--	--	--	--	--	--	--	--	--	--	--	--	--	--	--	--	--	--	--	--	--	--	--	--	--	--	--	--	--	--	--	--	--	--	--	--	--	--	--	--	--	--	--	--	--	--	--	--	--	--	--	--	--	--	--	--	--	--	--	--	--	--	--	--	--	--	--	--	--	--	--	--	--	--	--	--	--	--	--	--	--	--	--	--	--	--	--	--	--	--	--	--	--	--	--	--	--	--	--	--	--	--	--	--	--	--	--	--	--	--	--	--	--	--	--	--	--	--	--	--	--	--	--	--	--	--	--	--	--	--	--	--	--	--	--	--	--	--	--	--	--	--	--	--	--	--	--	--	--	--	--	--	--	--	--	--	--	--	--	--	--	--	--	--	--	--	--	--	--	--	--	--	--	--	--	--	--	--	--	--	--	--	--	--	--	--	--	--	--	--	--	--	--	--	--	--	--	--	--	--	--	--	--	--	--	--	--	--	--	--	--	--	--	--	--	--	--	--	--	--	--	--	--	--	--	--	--	--	--	--	--	--	--	--	--	--	--	--	--	--	--	--	--	--	--	--	--	--	--	--	--	--	--	--	--	--	--	--	--	--	--	--	--	--	--	--	--	--	--	--	--	--	--	--	--	--	--	--	--	--	--	--	--	--	--	--	--	--	--	--	--	--	--	--	--	--	--	--	--	--	--	--	--	--	--	--	--	--	--	--	--

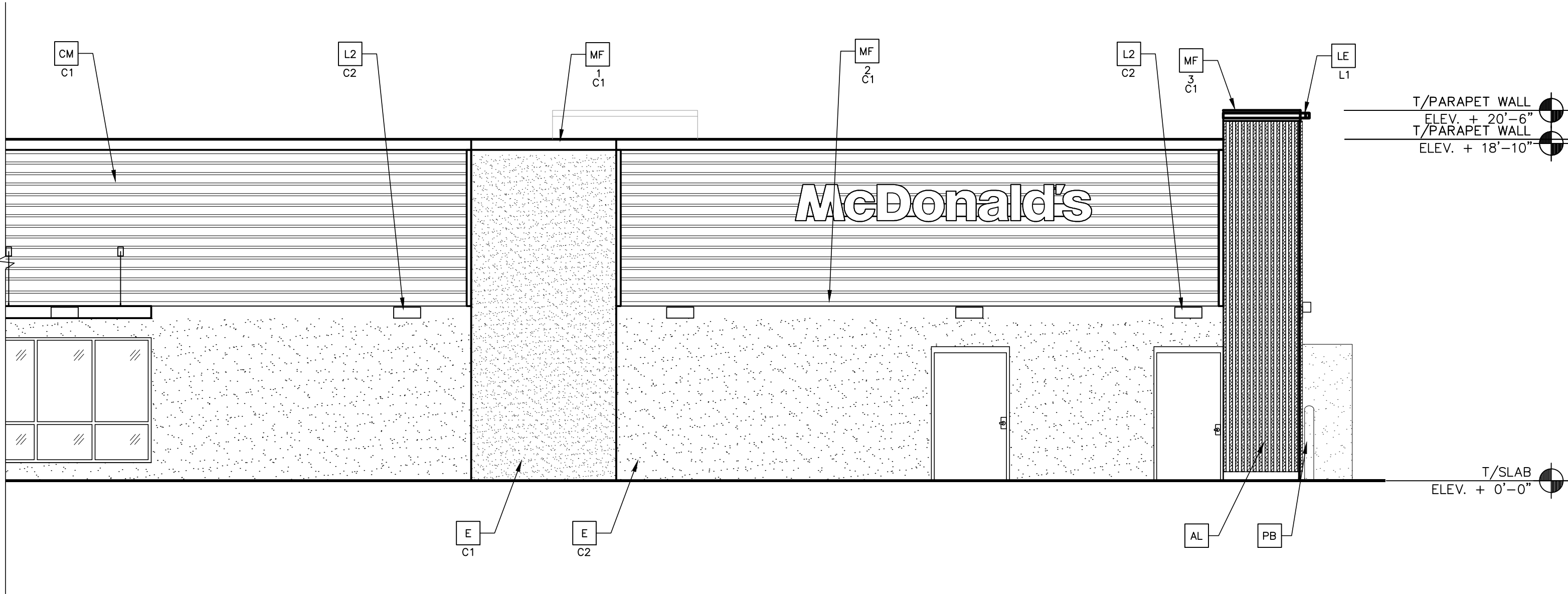


EXPLANATION NOTES:				KEY NOTES:											
D1	PORTION OF (E) MANSARD TO BE REMOVED TO RECEIVE NEW FACADE	D9	REMOVE (E) CORPORATE SIGNAGE	AL	ALUMINUM BATTEN SYSTEM MFR: ANNEX SIZE: 2"x2" PROFILE COLOR: WOOD GRAIN, BACKRAIL UNFINISHED, END-CAP PAINTED TO MATCH SUBSTRATE: 1/2" LP SMARTBOARD SUBSTRATE: RAL 7022	C2	ALUMINUM CANOPY SYSTEM COLOR: CHARCOAL	E	EXTERIOR INSULATION FINISH SYSTEM (E.I.F.S.) C1-COLOR: C1 = RAL 7022 C2 = SHERWIN WILLIAMS SW7019 "GAUNTLET GRAY"	L2	RADIAL SCONCE LIGHT FIXTURE – SEE ELECTRICAL C1-COLOR: C1= WHITE C2= PLATINUM SILVER	MF	METAL FASCIA C1-TYPE: 1 = PRE-FAB ANCHOR-TITE FASCIA 2 = BOTTOM TRIM AT METAL REVEAL PANEL 3 = VERTICAL TRIM AT METAL REVEAL PANEL CORNERS, CLOSURES COLOR: C1= WEATHERED ZINC C2= RAL 7022	S	MCDONALD'S SIGNAGE BY OTHERS – UNDER SEPARATE PERMIT.
D2	(E) BUILDING FOOTPRINT TO ALIGN WITH ROOF REMOVAL	D10	(E) STOREFRONT DOOR TO BE REMOVED	C3	ALUMINUM CANOPY TIEBACK COLOR: CHARCOAL	CJ	CONTROL JOINT 1-TYPE: 1 = EIFS	EW	EXPANSION JOINT, SEE DETAIL 7/4.1	LE	ACCENT LIGHTING – SEE ELECTRICAL L1-LED LIGHT: L1 = SLIM LED (DOWN ONLY) L2 = INTEGRAL CANOPY FIXTURE L3 = UP ONLY FLOOD FIXTURE	UN	METAL UNDERSCORE COLOR: GOLD	W1	EXTERIOR WINDOW ASSEMBLY – TEMPERED GLASS COLOR: EXTRA DARK BRONZE
D3	REMOVE (E) LIGHT BEAM SYSTEM	D11	PORTION OF EXTERIOR WALL TO BE REMOVED, SEE SHEET A0.1	AP	ALPOLIC METAL PANEL (COLOR: RAL 7022)	CM	7" REVEAL METAL WALL PANEL SYSTEM BY METAL ERA C1-COLOR: C1 = WEATHERED ZINC	FB	C02 = BULK C02 FILL BOX (EQPM SCHEDULE ITEM 49.00) BO = BULK OIL FILL BOX (EQPM SCHEDULE ITEM 700.18)	PB	PIPE BOLLARD – PAINTED YELLOW	W2	DRIVE-THRU WINDOW BY READY ACCESS MODEL: 600 SERIES, 36" SERVICE HEIGHT WITH TRANSOM, MANUAL OPEN; ELECTRONIC RELEASE	XX	COLOR: DEEP BRONZE
D4	(E) STOREFRONT DOOR TO REMAIN	D12	(E) MECHANICAL SCREEN TO BE REMOVED.	BR	MODULAR FACEBRICK C1-COLOR: C1 = "STEEL GREY" K12-3008 BY GLEN GERV	D	HOLLOW METAL DOOR PAINT: MATCH C2	GR	GUARD RAIL –SEE SITE PLAN FOR EXACT LOCATION AND LENGTH PAINT: RAL 7022	PT	(RMHC) COIN COLLECTOR MODEL: #WPT STD CALL 1-888-743-7435 TO ORDER	RL	= RIGHT TO LEFT LR = LEFT TO RIGHT		
D5	REMOVE (E) STOREFRONT WINDOW														
D6	REMOVE (E) BRICK VENEER														
D7	(E) BRICK VENEER TO REMAIN.														
D8	(E) DRIVE-THRU WINDOW TO REMAIN			C1	ALUMINUM CANOPY SYSTEM W/FASCIA COLOR: WHITE	DE	VINYL DECAL BY GRAPHICS SUPPLIER (SUPPLIER VARIES PER REGION) SURFACE APPLIED, FIELD INSTALLED.					RO	ROOF DRAIN OVERFLOW PIPE PAINT TO MATCH SURROUNDING MATERIAL		

\\us1279-101\workgroup\2014\active\2014048002\architecture\drawing\A2-C-A2.4.dwg Dimscale:1 Plot:[Time:Jul26,2018-12:09pm Login:remiller]
Pre-plot:[Aug 09, 201 09:50-agulierrez] Xrefs: "x_bdr" "x_elev" Images:



1
A2.1B
EXISTING NON-DT ELEVATION (EAST)
3/16" = 1'-0"



2
A2.1B
PROPOSED NON-DT ELEVATION (EAST)
3/16" = 1'-0"

DEMOLITION NOTES:

- D1 PORTION OF (E) MANSARD TO BE REMOVED TO RECEIVE NEW FACADE
- D2 (E) BUILDING FOOTPRINT TO ALIGN WITH ROOF REMOVAL
- D3 REMOVE (E) LIGHT BEAM SYSTEM
- D4 (E) STOREFRONT DOOR TO REMAIN
- D5 REMOVE (E) STOREFRONT WINDOW
- D6 REMOVE (E) BRICK VENEER
- D7 (E) BRICK VENEER TO REMAIN.
- D8 (E) DRIVE-THRU WINDOW TO REMAIN

- D9 REMOVE (E) CORPORATE SIGNAGE
- D10 (E) STOREFRONT DOOR TO BE REMOVED
- D11 PORTION OF EXTERIOR WALL TO BE REMOVED, SEE SHEET A0.1
- D12 (E) MECHANICAL SCREEN TO BE REMOVED.

KEY NOTES:

- AL ALUMINUM BATTEN SYSTEM
MFR: AWWEX
SIZE: 2"x2" PROFILE
COLOR: WOOD GRAIN, BACKRAIL UNFINISHED, ENDCAP PAINTED TO MATCH
SUBSTRATE: 1/2" LP SMARTBOARD
SUBSTRATE: RAL 7022
- AP ALPOLIC METAL PANEL (COLOR: RAL 7022)
- BR MODULAR-FAGEBRICK-
- B1 COLOR: -
- B1 = "STEEL GREY" K12-3608 BY GLEN-GERY-
- C1 ALUMINUM CANOPY SYSTEM W/FASCIA
COLOR: WHITE

- C2 ALUMINUM CANOPY SYSTEM
COLOR: CHARCOAL
- C3 ALUMINUM CANOPY TIEBACK
COLOR: CHARCOAL
- CJ CONTROL JOINT
1 -TYPE: 1 = EIFS
7" REVEAL METAL WALL PANEL SYSTEM BY METAL ERA
- CM -COLOR: C1 = WEATHERED ZINC
- D HOLLOW METAL DOOR
PAINT: MATCH C2
- DE VINYL DECAL BY GRAPHICS SUPPLIER (SUPPLIER VARIES PER REGION)
SURFACE APPLIED, FIELD INSTALLED, SEE DETAIL FOR FINISH

- E EXTERIOR INSULATION FINISH SYSTEM (E.I.F.S.)
C1-COLOR: C1 = RAL 7022
C2 = SHERWIN WILLIAMS SW7019 "GAUNTLET GRAY"
- EJ EXPANSION JOINT, SEE DETAIL 7/A4.1
- FB C02 C02 = BULK C02 FILL BOX (EQPM SCHEDULE ITEM 49.00)
B0 = BULK OIL FILL BOX (EQPM SCHEDULE ITEM 700.18)
- GR GUARD RAIL -SEE SITE PLAN FOR EXACT LOCATION AND LENGTH
PAINT: RAL 7022
- L1 RECESSED DOWN LIGHT FIXTURE - SEE ELECTRICAL

- L2 RADIAL SCONCE LIGHT FIXTURE - SEE ELECTRICAL
C1-COLOR: C1= WHITE
C2= PLATINUM SILVER
- LE ACCENT LIGHTING - SEE ELECTRICAL
L1-LED LIGHT;
L1 = SLIM LED (DOWN ONLY)
L2 = INTEGRAL CANOPY FIXTURE
L3 = UP ONLY FLOOD FIXTURE

- MF METAL FASCIA
C1 -TYPE: 1 = PRE-FAB ANCHOR-TITE FASCIA
2 = BOTTOM TRIM AT METAL REVEAL PANEL
3 = VERTICAL TRIM AT METAL REVEAL PANEL CORNERS, CLOSURES
COLOR: C1= WEATHERED ZINC
C2= RAL 7022
- PB PIPE BOLLARD - PAINTED YELLOW
- PT (RMHC) COIN COLLECTOR
MODEL: #WPT STD
CALL 1-888-743-7435 TO ORDER
- RO ROOF DRAIN OVERFLOW PIPE PAINT TO MATCH SURROUNDING MATERIAL

- S McDONALD'S SIGNAGE BY OTHERS - UNDER SEPARATE PERMIT.
- UN METAL UNDERSCORE
COLOR: GOLD
- W1 EXTERIOR WINDOW ASSEMBLY - TEMPERED GLASS
COLOR: EXTRA DARK BRONZE
- W2 DRIVE-THRU WINDOW BY READY ACCESS
MODEL: 600 SERIES, 36" SERVICE HEIGHT WITH TRANSOM, MANUAL OPEN; ELECTRONIC RELEASE
COLOR: DEEP BRONZE
SLIDE DIRECTION: RL = RIGHT TO LEFT
LR = LEFT TO RIGHT

SHEET NO.

DRAWING TITLE:
BUILDING ELEVATIONS

PROJECT ADDRESS:
3509 HOMESTEAD RD
SANTA CLARA, CA 95051

PROJECT CAD FILE:
2014048002

STATE SITE CODE:
004-0166

BRAND REVIEW

05/07/18

PLANNING

05/07/18

PERMIT

-

BID

-

CONSTRUCTION

-

PREPARED FOR:

McDonald's USA, LLC

©2012 McDonald's USA, LLC

These drawings and specifications are the confidential and proprietary information of McDonald's USA, LLC. They are prepared for use on this specific site in conjunction with its issue date and are not to be reproduced, copied, or transmitted in any form or by any means without written authorization. The contract documents were prepared by the architect and are not to be used for any other project without the services of properly licensed architects and engineers. Reproduction of these drawings for reference or example on another project requires the the contract documents for reuse on another project is not authorized.

Stantec
Stantec Architecture Inc.
38 Technology Drive
Irvine, CA U.S.A. 92618

Tel. 949.923.6000
Fax. 949.923.6190
www.stantec.com

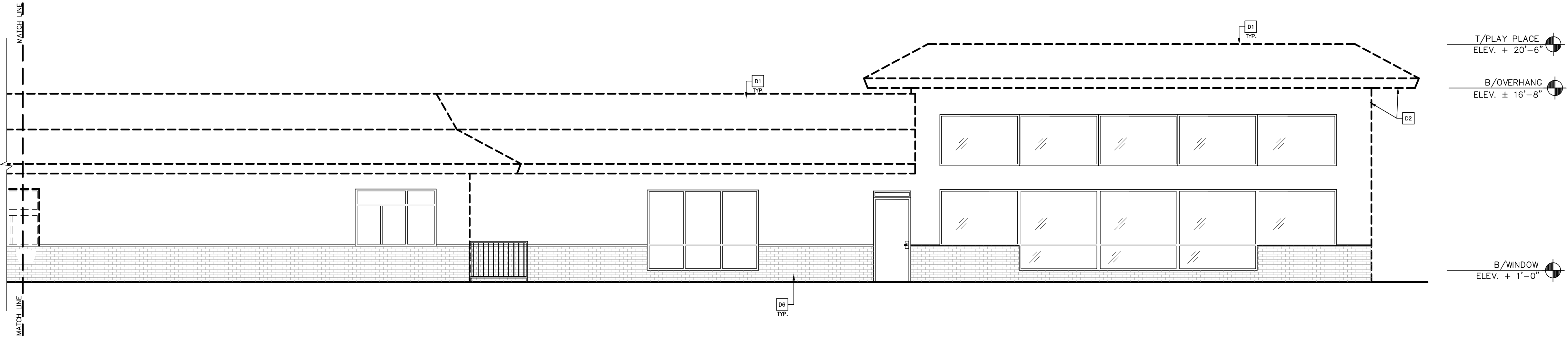
PLANNING SUBMITTAL
LEGAL CLEARANCE
DESCRIPTION

2
1
REV

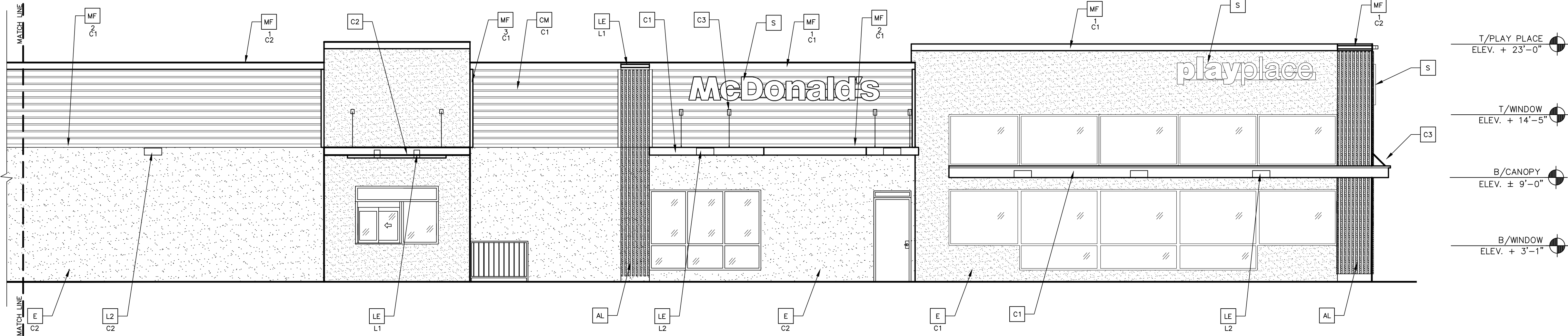
05/07/18
05/07/18
DATE

DL
DL
BY

\\us1279-101\workgroup\2014\active\2014048002\architecture\drawing\A2-A2.2.dwg Dimscale:1 LTScale:1 Plot[Time:Jul26,2018-12:20pm Login:remiller]
Pre-plot:[AUG 09, 2011 09:50-aguilerez] Xref:s: "x_bdr" "x_elev" Images:



1
A2.2A EXISTING DT ELEVATION (WEST)
3/16" = 1'-0" SEE DEMOLITION KEYNOTES BELOW



2
A2.2A PROPOSED DT ELEVATION (WEST)
3/16" = 1'-0"

DEMOLITION NOTES:

- | | | | |
|----|--|-----|--|
| D1 | PORTION OF (E) MANSARD TO BE REMOVED TO RECEIVE NEW FACADE | D9 | REMOVE (E) CORPORATE SIGNAGE |
| D2 | (E) BUILDING FOOTPRINT TO ALIGN WITH ROOF REMOVAL | D10 | (E) STOREFRONT DOOR TO BE REMOVED |
| D3 | REMOVE (E) LIGHT BEAM SYSTEM | D11 | PORTION OF EXTERIOR WALL TO BE REMOVED, SEE SHEET A0.1 |
| D4 | (E) STOREFRONT DOOR TO REMAIN | D12 | (E) MECHANICAL SCREEN TO BE REMOVED. |
| D5 | REMOVE (E) STOREFRONT WINDOW | | |
| D6 | REMOVE (E) BRICK VENEER | | |
| D7 | (E) BRICK VENEER TO REMAIN. | | |
| D8 | (E) DRIVE-THRU WINDOW TO REMAIN | | |

KEY NOTES:

- | | | | | | | | | | | | |
|----|--|----|--|----|--|----|--|----|--|----|---|
| AL | ALUMINUM BATTEN SYSTEM
MFR: AWMEX
SIZE: 2"x2" PROFILE
COLOR: WOOD GRAIN, BACKRAIL UNFINISHED, ENDCAP PAINTED TO MATCH
SUBSTRATE: 1/2" LP SMARTBOARD
SUBSTRATE: RAL 7022 | C2 | ALUMINUM CANOPY SYSTEM
COLOR: CHARCOAL | E | EXTERIOR INSULATION FINISH SYSTEM (E.I.F.S.)
C1—COLOR:
C1 = RAL 7022
C2 = SHERWIN WILLIAMS SW7019 "GAUNTLET GRAY" | L2 | RADIAL SCONCE LIGHT FIXTURE — SEE ELECTRICAL
C1—COLOR:
C1= WHITE
C2= PLATINUM SILVER | MF | METAL FASCIA
C1—TYPE:
1 = PRE-FAB ANCHOR-TITE FASCIA
2 = BOTTOM TRIM AT METAL REVEAL PANEL
3 = VERTICAL TRIM AT METAL REVEAL PANEL CORNERS, CLOSURES
COLOR:
C1= WEATHERED ZINC
C2= RAL 7022 | S | McDONALD'S SIGNAGE BY OTHERS — UNDER SEPARATE PERMIT. |
| AP | ALPOLIC METAL PANEL (COLOR: RAL 7022) | CJ | CONTROL JOINT
1 —TYPE: 1 = EIFS | EJ | EXPANSION JOINT, SEE DETAIL 7/A4.1 | LE | ACCENT LIGHTING — SEE ELECTRICAL
L1—LED LIGHT;
L1 = SLIM LED (DOWN ONLY)
L2 = INTEGRAL CANOPY FIXTURE
L3 = UP ONLY FLOOD FIXTURE | PB | PIPE BOLLARD — PAINTED YELLOW | W1 | EXTERIOR WINDOW ASSEMBLY — TEMPERED GLASS
COLOR: EXTRA DARK BRONZE |
| BR | MODULAR-FAGEBRICK—
COLOR:
B1 = "STEEL GREY" K12-3608 BY GLEN-GERY | CM | 7" REVEAL METAL WALL PANEL SYSTEM BY METAL ERA
C1—COLOR:
C1 = WEATHERED ZINC | FB | CO2 — CO2 = BULK CO2 FILL BOX (EQPM SCHEDULE ITEM 49.00)
BO = BULK OIL FILL BOX (EQPM SCHEDULE ITEM 700.18) | GR | GUARD RAIL —SEE SITE PLAN FOR EXACT LOCATION AND LENGTH
PAINT: RAL 7022 | PT | (RMHC) COIN COLLECTOR
MODEL: #WFT STD
CALL 1-888-743-7435 TO ORDER | W2 | DRIVE-THRU WINDOW BY READY ACCESS
MODEL: 600 SERIES, 36" SERVICE HEIGHT WITH TRANSOM, MANUAL OPEN; ELECTRONIC RELEASE
COLOR: DEEP BRONZE
SLIDE DIRECTION: RL = RIGHT TO LEFT
LR = LEFT TO RIGHT |
| C1 | ALUMINUM CANOPY SYSTEM W/FASCIA
COLOR: WHITE | D | HOLLOW METAL DOOR
PAINT: MATCH C2 | L1 | RECESSED DOWN LIGHT FIXTURE — SEE ELECTRICAL | | | RO | ROOF DRAIN OVERFLOW PIPE PAINT TO MATCH SURROUNDING MATERIAL | | |
| DE | VINYL DECAL BY GRAPHICS SUPPLIER (SUPPLIER VARIES PER REGION)
SURFACE APPLIED, FIELD INSTALLED, SEE DETAIL 7/A4.1 | | | | | | | | | | |

PREPARED FOR: McDonald's USA, LLC

McDonald's USA, LLC

These drawings and specifications are the confidential and proprietary information of McDonald's USA, LLC. They are prepared for use on this specific site in conjunction with its issue date and are not to be reproduced, copied, or transmitted in any form without written authorization. The contract documents were prepared by Stantec Architecture Inc. for McDonald's USA, LLC. These drawings are for reference only and are not to be used for any other project. Reproduction of the services of properly licensed architects and engineers. Reproduction of the contract documents for reuse on another project is not authorized.

BRAND REVIEW
05/07/18

PLANNING
05/07/18

PERMIT
—

BID
—

CONSTRUCTION
—

DRAWING TITLE:
BUILDING ELEVATIONS

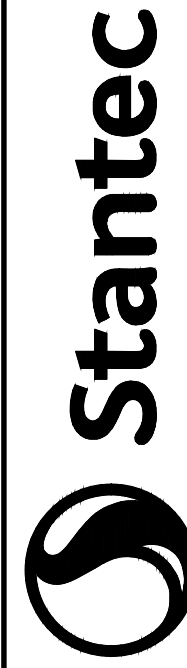
PROJECT ADDRESS:
3509 HOMESTEAD RD
SANTA CLARA, CA 95051

PROJECT CAD FILE:
2014048002

STATE SITE CODE:
004-0166

SHEET NO.
A2.2A

PLOT SCALE: 1"=1' MOD-A-BOR



Stantec Architecture Inc.
38 Technology Drive
Irvine, CA U.S.A. 92618
Tel. 949.923.6000
Fax. 949.923.6190
www.stantec.com

©2012 McDonald's USA, LLC

McDonald's USA, LLC

These drawings and specifications are the confidential and proprietary information of McDonald's USA, LLC. They are prepared for use on this specific site in conjunction with its issue date and are not to be reproduced, copied, or transmitted in any form without written authorization. The contract documents were prepared by Stantec Architecture Inc. for McDonald's USA, LLC. These drawings are for reference only and are not to be used for any other project. Reproduction of the services of properly licensed architects and engineers. Reproduction of the contract documents for reuse on another project is not authorized.

BRAND REVIEW
05/07/18

PLANNING
05/07/18

PERMIT
—

BID
—

CONSTRUCTION
—

DRAWING TITLE:
BUILDING ELEVATIONS

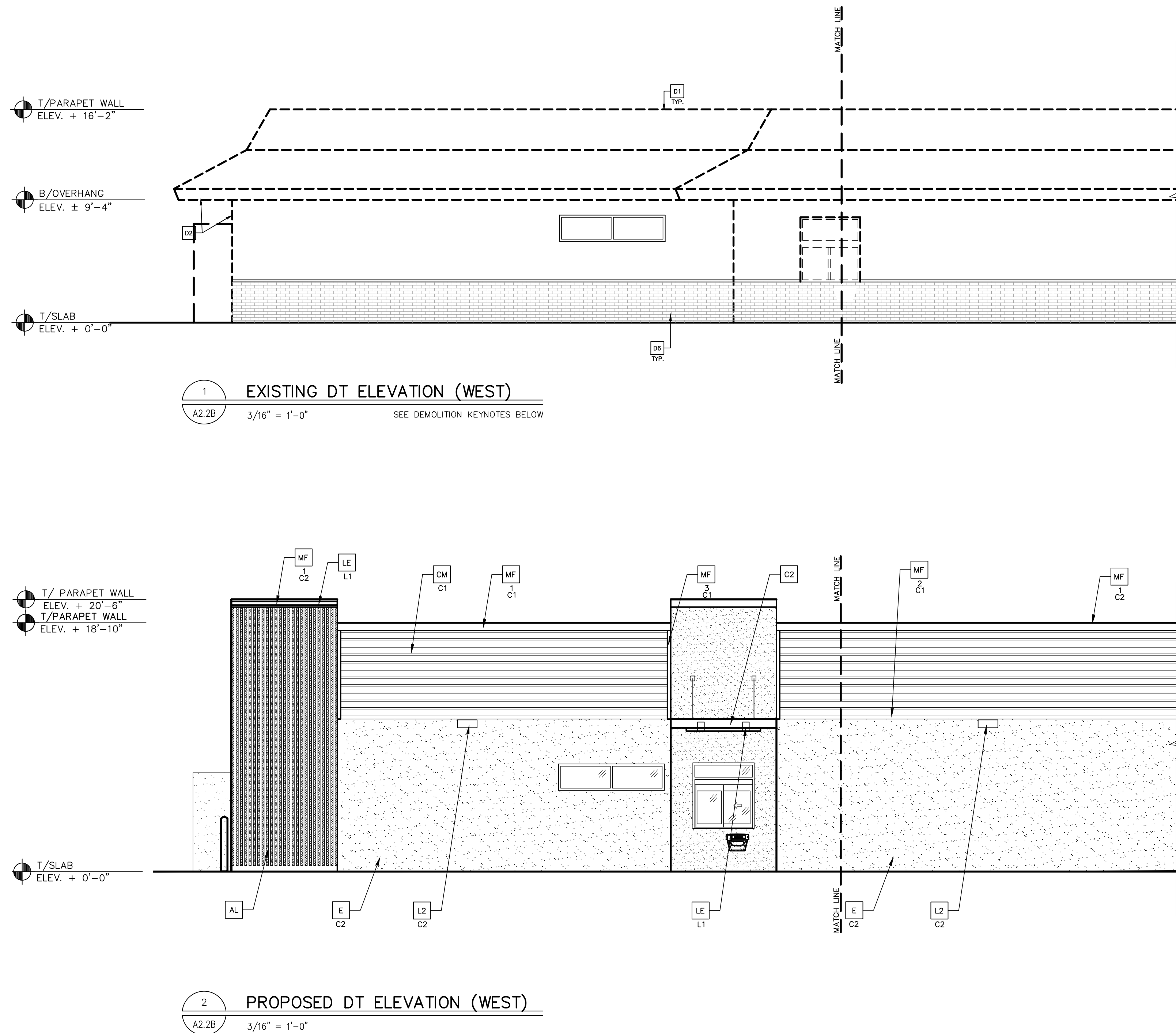
PROJECT ADDRESS:
3509 HOMESTEAD RD
SANTA CLARA, CA 95051

PROJECT CAD FILE:
2014048002

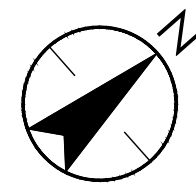
STATE SITE CODE:
004-0166

SHEET NO.
A2.2A

PLOT SCALE: 1"=1' MOD-A-BOR



REVISION NOTES:			KEY NOTES:		
D1	PORTION OF (E) MANSARD TO BE REMOVED TO RECEIVE NEW FACADE	D9	REMOVE (E) CORPORATE SIGNAGE	AL	ALUMINUM BATTEN SYSTEM MFR: ANNEX SIZE: 2"x2" PROFILE COLOR: WOOD GRAIN, BACKRILL UNFINISHED, ENDCAP PAINTED TO MATCH SUBSTRATE: 1/2" LP SMARTBOARD SUBSTRATE: RAL 7022
D2	(E) BUILDING FOOTPRINT TO ALIGN WITH ROOF REMOVAL	D10	(E) STOREFRONT DOOR TO BE REMOVED	C2	ALUMINUM CANOPY SYSTEM COLOR: CHARCOAL
D3	REMOVE (E) LIGHT BEAM SYSTEM	D11	PORTION OF EXTERIOR WALL TO BE REMOVED, SEE SHEET AD.1	C3	ALUMINUM CANOPY TIEBACK COLOR: CHARCOAL
D4	(E) STOREFRONT DOOR TO REMAIN	D12	(E) MECHANICAL SCREEN TO BE REMOVED.	CJ	CONTROL JOINT 1—TYPE: 1 = EIFS
D5	REMOVE (E) STOREFRONT WINDOW	AP	ALPOLIC METAL PANEL (COLOR: RAL 7022)	CM	7" REVEAL METAL WALL PANEL SYSTEM BY METAL ERA C1—COLOR: C1 = WEATHERED ZINC
D6	REMOVE (E) BRICK VENEER	BR	MODULAR FACEBRICK COLOR: "STEEL GREY" K12-3008 BY GLEN GERV	D	HOLLOW METAL DOOR VINYL DECAL BY GRAPHICS SUPPLIER (SUPPLIER VARIES PER REGION) SURFACE APPLIED, FIELD INSTALLED,
D7	(E) BRICK VENEER TO REMAIN.	C1	ALUMINUM CANOPY SYSTEM W/FASCIA COLOR: WHITE	DE	
D8	(E) DRIVE-THRU WINDOW TO REMAIN			GR	GUARD RAIL —SEE SITE PLAN FOR EXACT LOCATION AND LENGTH PAINT: RAL 7022
				I1	RECESSED DOWN LIGHT FIXTURE - SEE ELECTRICAL
				E	EXTERIOR INSULATION FINISH SYSTEM (E.I.F.S.) C1—COLOR: C1 = RAL 7022 C2 = SHERWIN WILLIAMS SW7019 "GAUNTLET GRAY"
				L2	RADIAL SCONCE LIGHT FIXTURE — SEE ELECTRICAL C1—TYPE: C1= WHITE C2 = PLATINUM SILVER
				LE	ACCENT LIGHTING — SEE ELECTRICAL L1—LED LIGHT: L1 = SLIM LED (DOWN ONLY) L2 = INTEGRAL CANOPY FIXTURE L3 = UP ONLY FLOOD FIXTURE
				MF	METAL FASCIA C1—TYPE: 1 = PRE-FAB ANCHOR—TITE FASCIA 2 = BOTTOM TRIM AT METAL REVEAL PANEL 3 = VERTICAL TRIM AT METAL REVEAL PANEL CORNERS, CLOSURES COLOR: C1= WEATHERED ZINC C2 = RAL 7022
				PB	PIPE BOLLARD — PAINTED YELLOW
				PT	(RMHC) COIN COLLECTOR MODEL: #WPT STD CALL 1-888-743-7435 TO ORDER
				RO	ROOF DRAIN OVERFLOW PIPE PAINT TO MATCH SURROUNDING MATERIAL
				S	MCDONALD'S SIGNAGE BY OTHERS — UNDER SEPARATE PERMIT.
				UN	METAL UNDERSCORE COLOR: GOLD
				W1	EXTERIOR WINDOW ASSEMBLY — TEMPERED GLASS COLOR: EXTRA DARK BRONZE
				W2	DRIVE-THRU WINDOW BY READY ACCESS MODEL: 600 SERIES, 36" SERVICE HEIGHT WITH TRANSOM, MANUAL OPEN; ELECTRONIC RELEASE COLOR: DEEP BRONZE
					SLIDE DIRECTION: RL = RIGHT TO LEFT LR = LEFT TO RIGHT



1. ALL PLANTING AREAS SHALL HAVE A 2" LAYER OF ORGANIC COMPOST ROTOTILLED TO A DEPTH OF 4", THEN COVERED WITH RECYCLED PAPER AS A BIODEGRADABLE WEED SUPPRESSANT AND TOPDRESSED WITH A 3" (MINIMUM) DEEP LAYER OF 3/4" MINUS WOOD CHIP MULCH.
2. REFER TO ARCHITECTURAL AND CIVIL PLANS FOR DESCRIPTIONS OF ELEMENTS NOT IDENTIFIED ON THIS PLAN.
3. OBSERVE THE FOLLOWING MINIMUM SETBACK DISTANCES FOR TREE PLANTING :

BETWEEN STREET TREES	= 30 FT.
DRIVEWAY CUTS AND FIRE HYDRANTS	= 7 FT.
UTILITY BOXES, MANHOLE AND OTHER UTILITY VAULTS, TELEPHONE AND OTHER UTILITY POLES, GAS AND WATER METER, AND MAINS	= 5 FT.
4. ALL SURFACE AND SUB-SURFACE SWALES, DRAINAGE STRUCTURES AND PATTERNS SHALL BE MAINTAINED.
5. A LICENSED LANDSCAPE MAINTENANCE CONTRACTOR WILL BE RETAINED TO PERFORM ROUTINE MAINTENANCE DUTIES.
6. LOCATIONS AND QUANTITIES OF EXISTING LANDSCAPE MATERIALS ARE APPROXIMATE.
7. PLANTER SOIL SHALL BE AMENDED AS DESCRIBED BY A LABORATORY SOIL ANALYSIS. ORGANIC COMPOST AND AMENDMENT TO BE USED.
8. LANDSCAPE CONSTRUCTION WASTE TO BE RECYCLED PER LOCAL CODES AND REQUIREMENTS.
9. NO PLANTS SELECTED REQUIRE SHEARING
10. OBTAIN ALL MATERIALS LOCALLY (WITHIN 50 MILES) AS POSSIBLE.
11. EROSION CONTROL MATTING TO BE USED ON ALL SLOPES 3:1 AND GREATER.
12. EXISTING TREES TO REMAIN TO BE PROTECTED PER ISA CERTIFIED ARBORIST AND/OR LOCAL TREE ORDINANCE.



GENERAL NOTES

1. ALL PLANTING AREAS SHALL HAVE A 2" LAYER OF ORGANIC COMPOST ROTOTILLED TO A DEPTH OF 4", THEN COVERED WITH RECYCLED PAPER AS A BIODEGRADABLE WEED SUPPRESSANT AND TOPDRESSED WITH A 3" (MINIMUM) DEEP LAYER OF 3/4" MINUS WOOD CHIP MULCH.
2. REFER TO ARCHITECTURAL AND CIVIL PLANS FOR DESCRIPTIONS OF ELEMENTS NOT IDENTIFIED ON THIS PLAN.
3. OBSERVE THE FOLLOWING MINIMUM SETBACK DISTANCES FOR TREE PLANTING :

BETWEEN STREET TREES	= 30 FT.
DRIVEWAY CUTS AND FIRE HYDRANTS	= 7 FT.
UTILITY BOXES, MANHOLE AND OTHER UTILITY VAULTS, TELEPHONE AND OTHER UTILITY POLES, GAS AND WATER METER, AND MAINS	= 5 FT.
4. ALL SURFACE AND SUB-SURFACE SWALES, DRAINAGE STRUCTURES AND PATTERNS SHALL BE MAINTAINED.
5. A LICENSED LANDSCAPE MAINTENANCE CONTRACTOR WILL BE RETAINED TO PERFORM ROUTINE MAINTENANCE DUTIES.
6. LOCATIONS AND QUANTITIES OF EXISTING LANDSCAPE MATERIALS ARE APPROXIMATE.
7. PLANTER SOIL SHALL BE AMENDED AS DESCRIBED BY A LABORATORY SOIL ANALYSIS. ORGANIC COMPOST AND AMENDMENT TO BE USED.
8. LANDSCAPE CONSTRUCTION WASTE TO BE RECYCLED PER LOCAL CODES AND REQUIREMENTS.
9. NO PLANTS SELECTED REQUIRE SHEARING
10. OBTAIN ALL MATERIALS LOCALLY (WITHIN 50 MILES) AS POSSIBLE.
11. EROSION CONTROL MATTING TO BE USED ON ALL SLOPES 3:1 AND GREATER.
12. EXISTING TREES TO REMAIN TO BE PROTECTED PER ISA CERTIFIED ARBORIST AND/OR LOCAL TREE ORDINANCE.

[illegible]