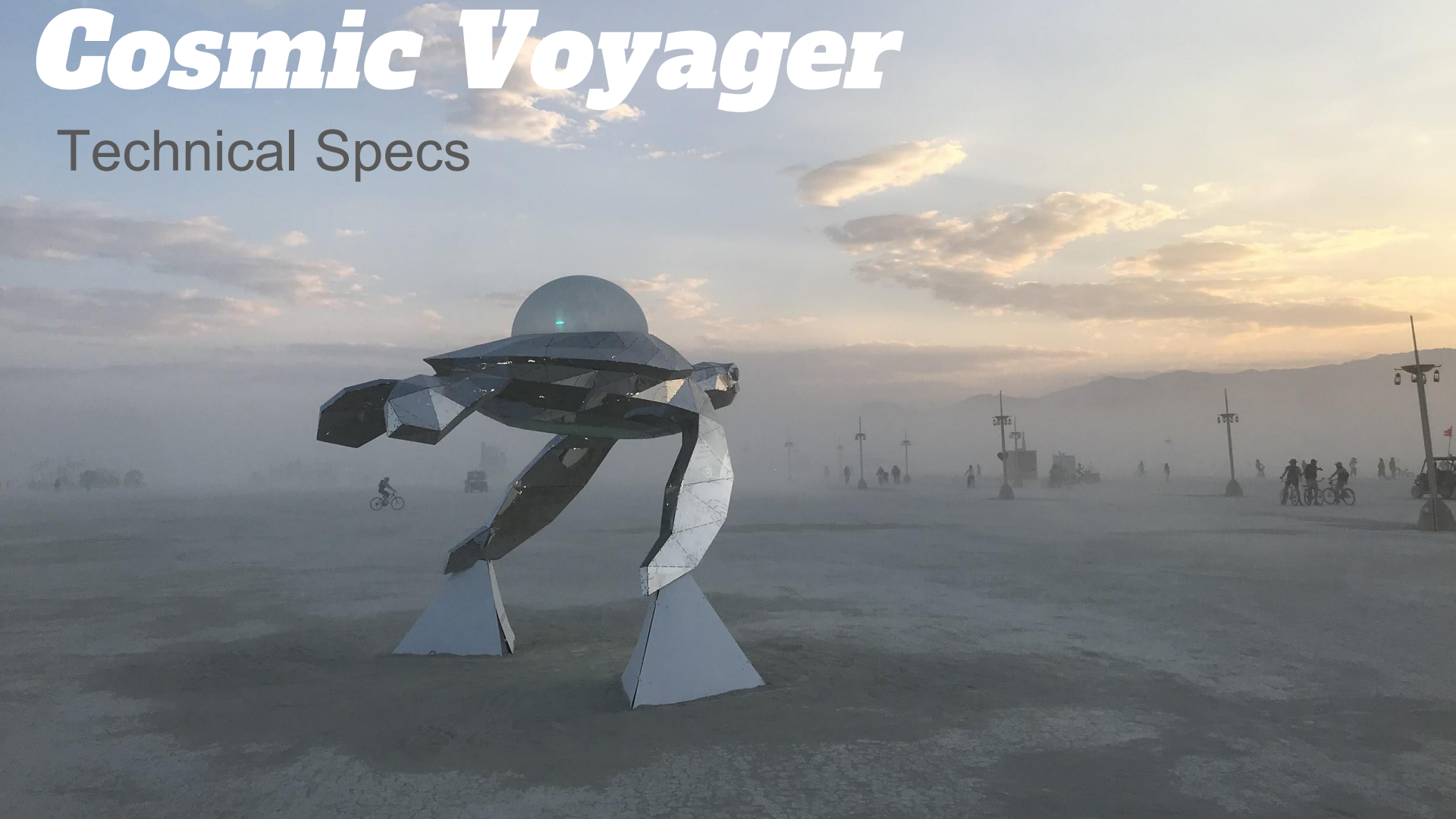
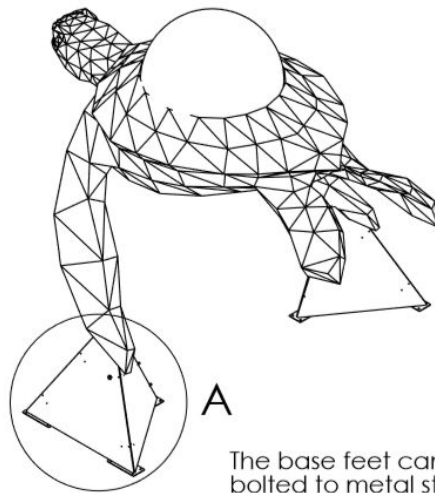
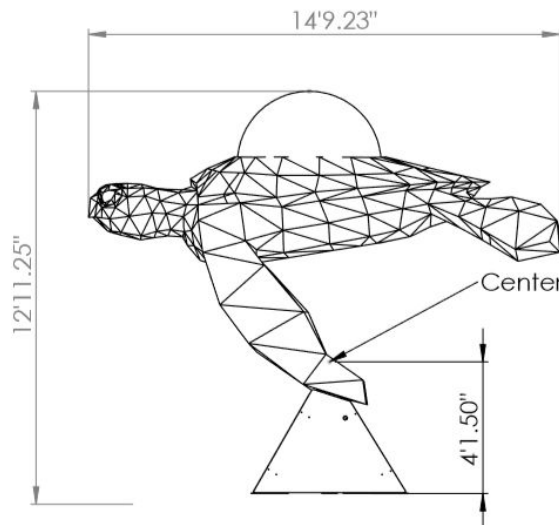
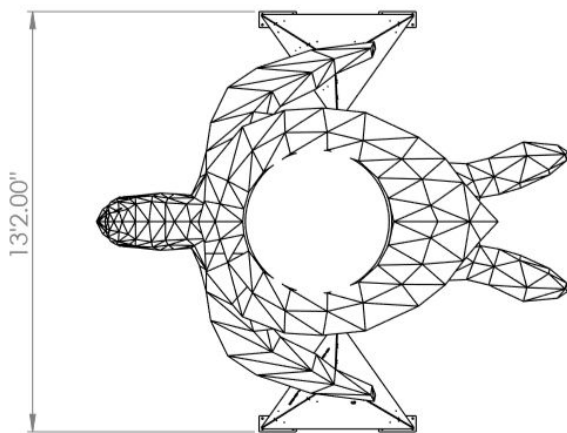


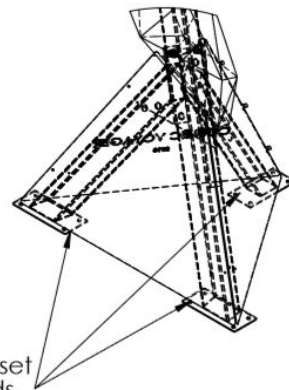
Cosmic Voyager

Technical Specs



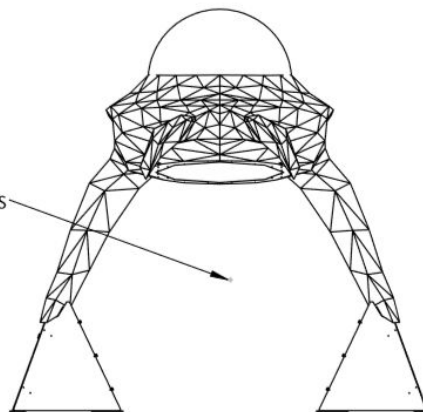


The base feet can be bolted to metal studs set into the concrete pads.



DETAIL A

SCALE 1 : 25



Cosmic Voyager
Units: Feet (') Inches (")
Weight: ~2400lbs.
Power: x1 120V AC, 10A

The sculpture can also be displayed on a metal stand, covered with a wooden deck, if mounting to the concrete pads is not feasible.



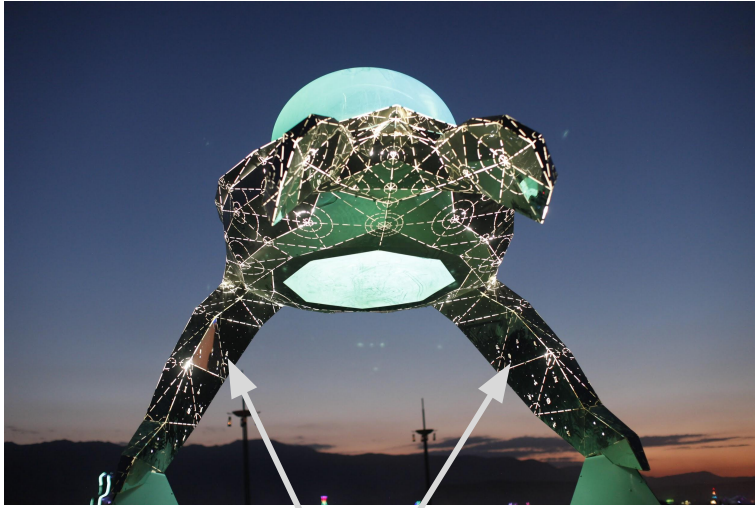
The internal steel frame weighs ~1900lbs, providing a rigid stable base.



The internal frame is made from 6x4" 3/16" wall steel tubing with 1" diameter steel bolts. It is painted with corrosion resistant enamel.

Interactive Elements

Cosmic Voyager features two sets of x12 horoscope buttons on each front fin. When a button is pressed, a pre-recorded horoscope is read via an internal speaker. The horoscopes change based on the date and time. When two participants press a button on either fin a dual horoscope is read.



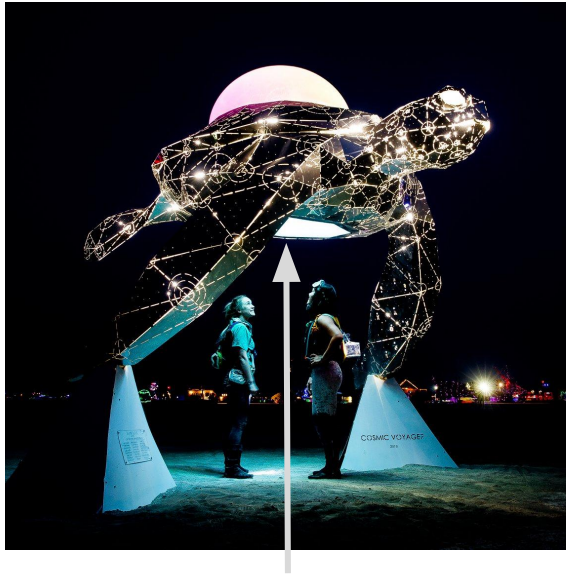
X12 Buttons on each fin, corresponding to the x12 astrological signs.



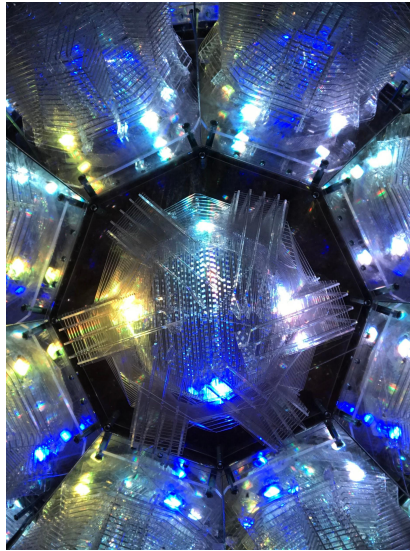
Horoscope buttons.

Internal “Heart Chamber” Sculpture

A smaller sculpture is hidden inside the turtle within a kaleidoscope, providing something special for participants to discover. Inspired by a compass rose or heart chakra; it represents something that gives us direction.

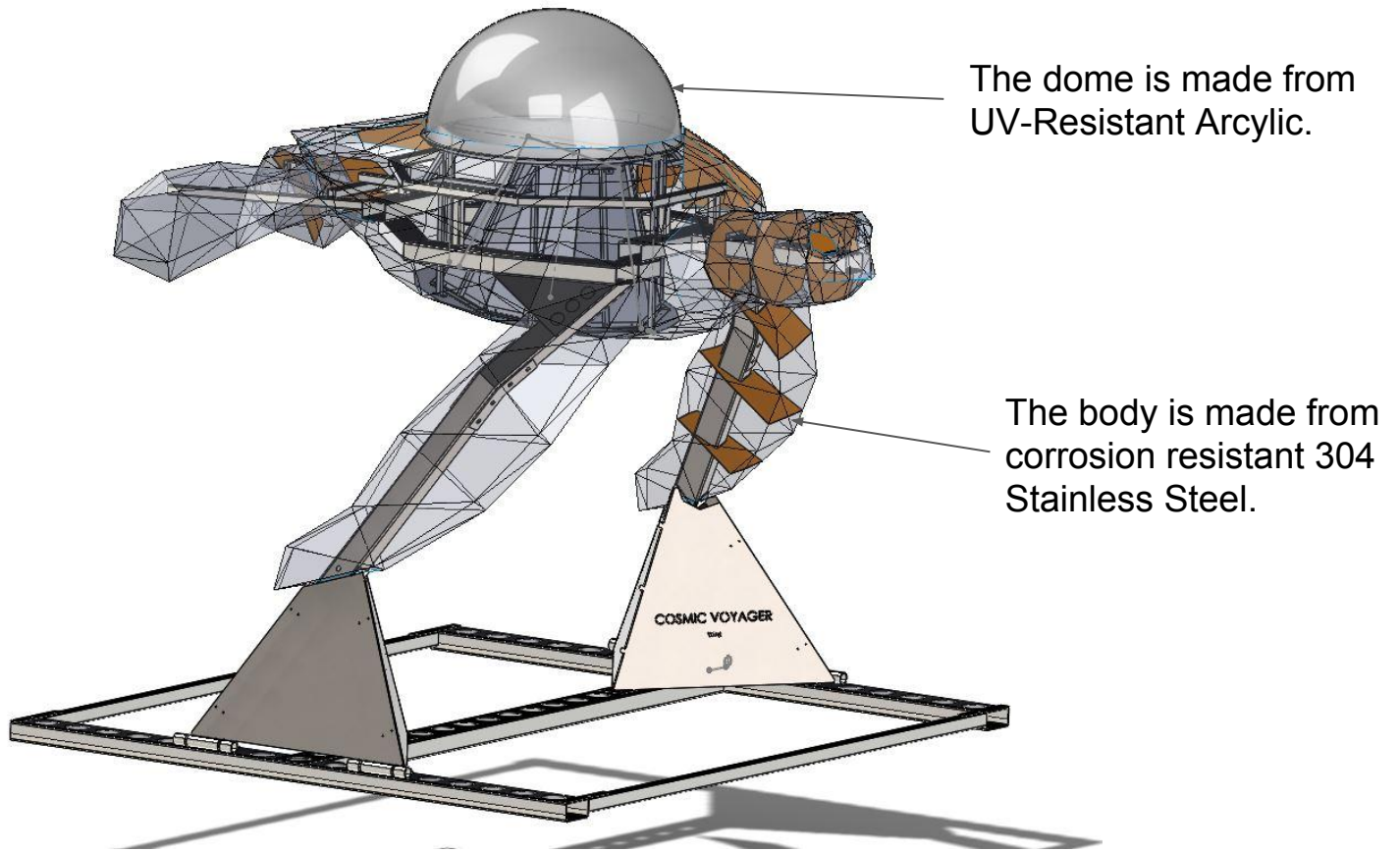


The “heart chamber” is viewable through a break-proof polycarbonate window in the belly.



A kleidoscope creates the appearance of a spherical structure, floating inside the turtle.





The dome is made from UV-Resistant Arcylic.

The body is made from corrosion resistant 304 Stainless Steel.

The sculpture can also be displayed on a steel "H" frame, covered by a wooden deck, without needing any ground anchors.