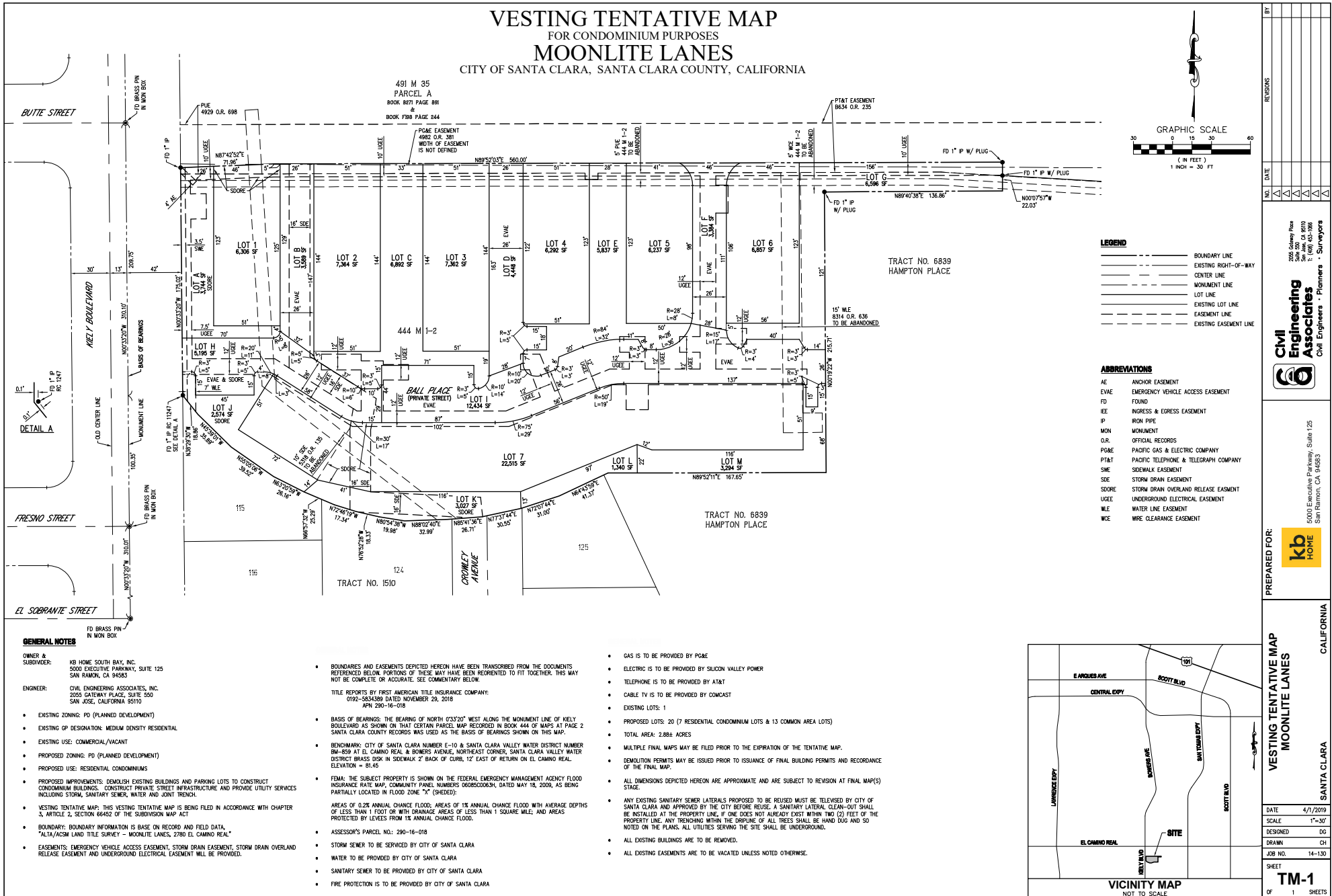
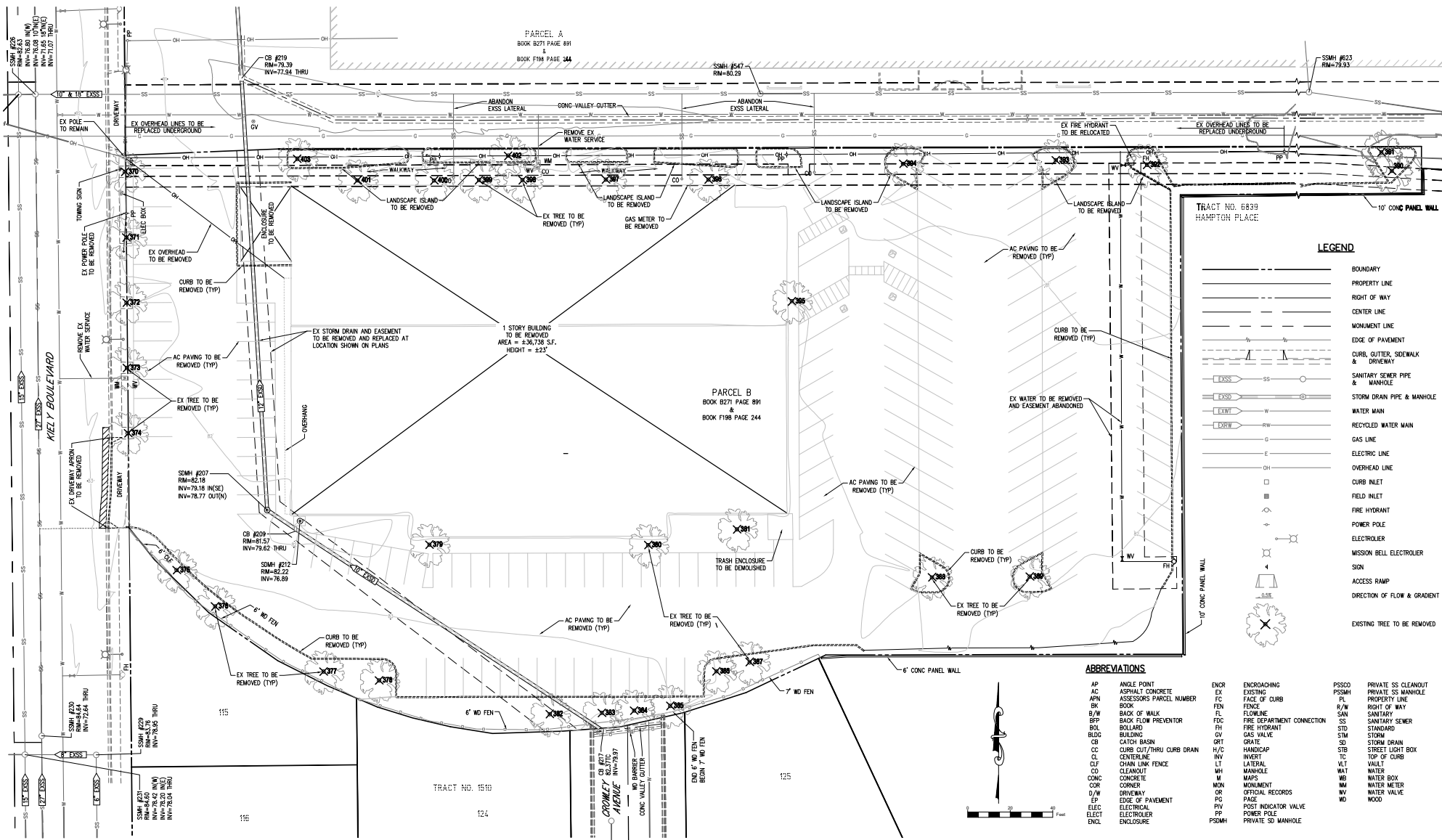


VESTING TENTATIVE MAP  
FOR CONDOMINIUM PURPOSES  
MOONLITE LANES  
CITY OF SANTA CLARA, SANTA CLARA COUNTY, CALIFORNIA





JOB# 14-130

EXISTING CONDITIONS & DEMOLITION PLAN

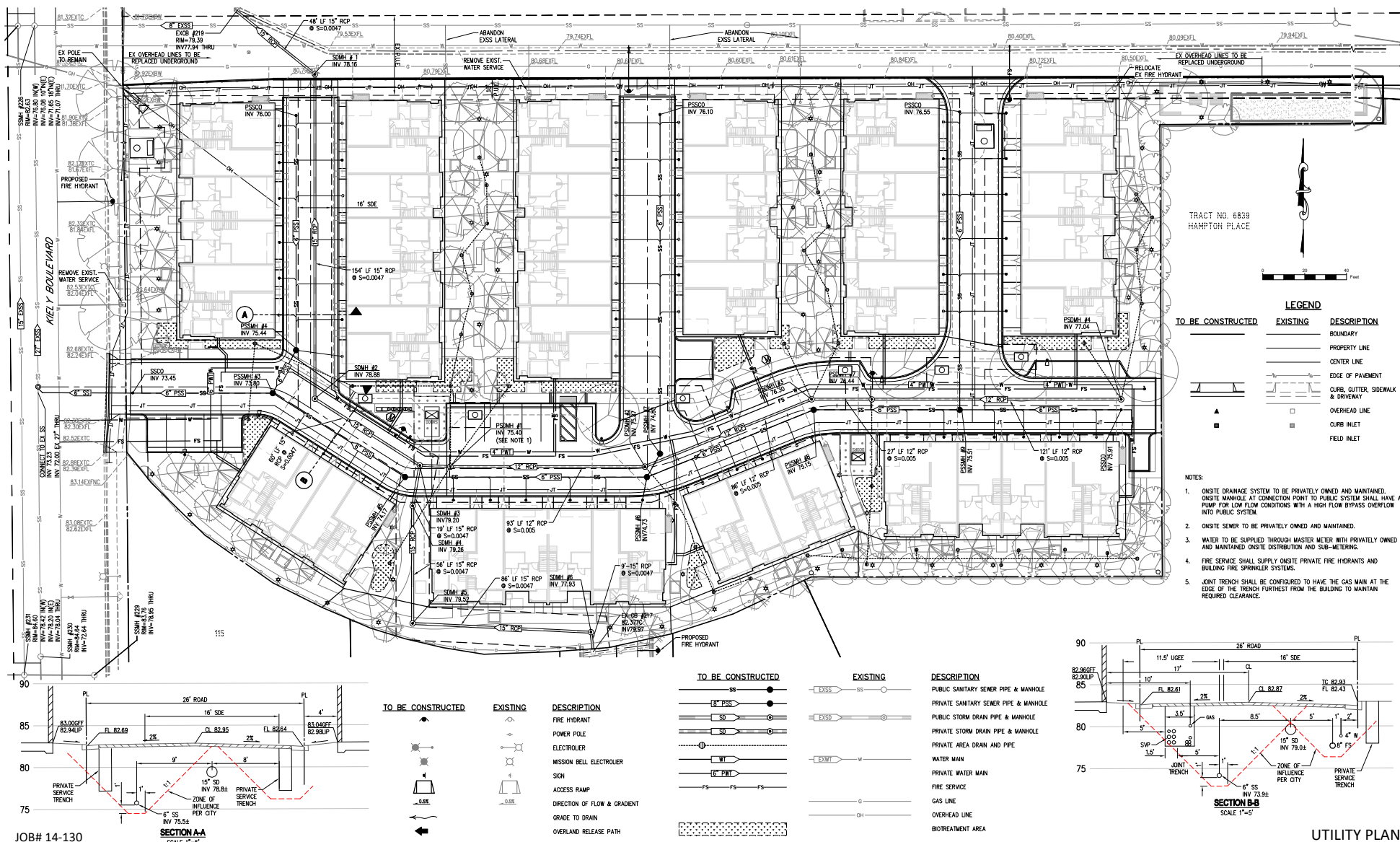
**MOONLITE LANES**  
IN SANTA CLARA, CA



**C-1**

DATE 4/1/2019





JOB# 14-130

**MOONLITE LANES**  
IN SANTA CLARA, CA



**Civil Engineering Associates**



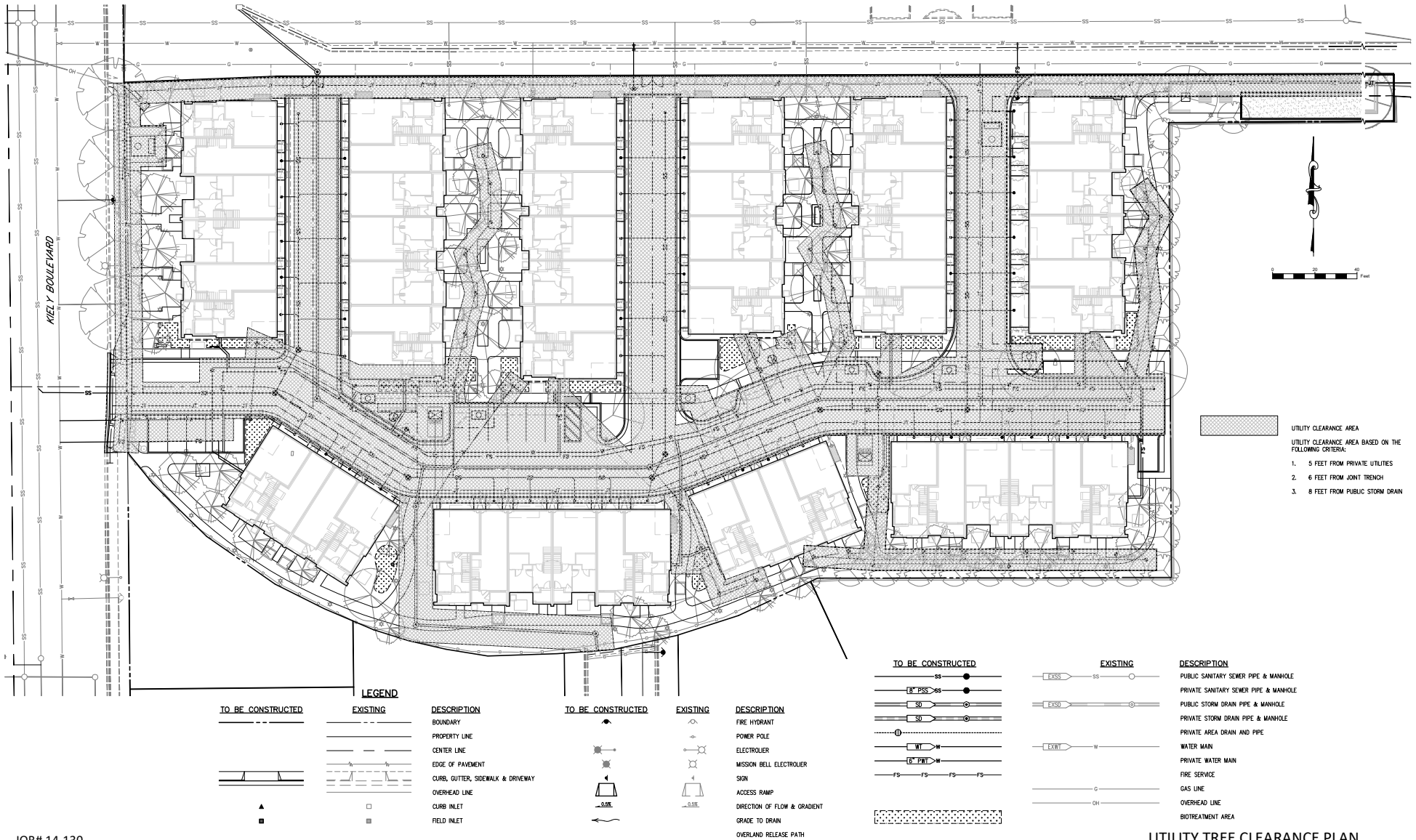
UTILITY PLAN

**C-3**

DATE 4/1/2019







JOB# 14-130

# **MOONLITE LANES** IN SANTA CLARA, CA

## UTILITY TREE CLEARANCE PLAN

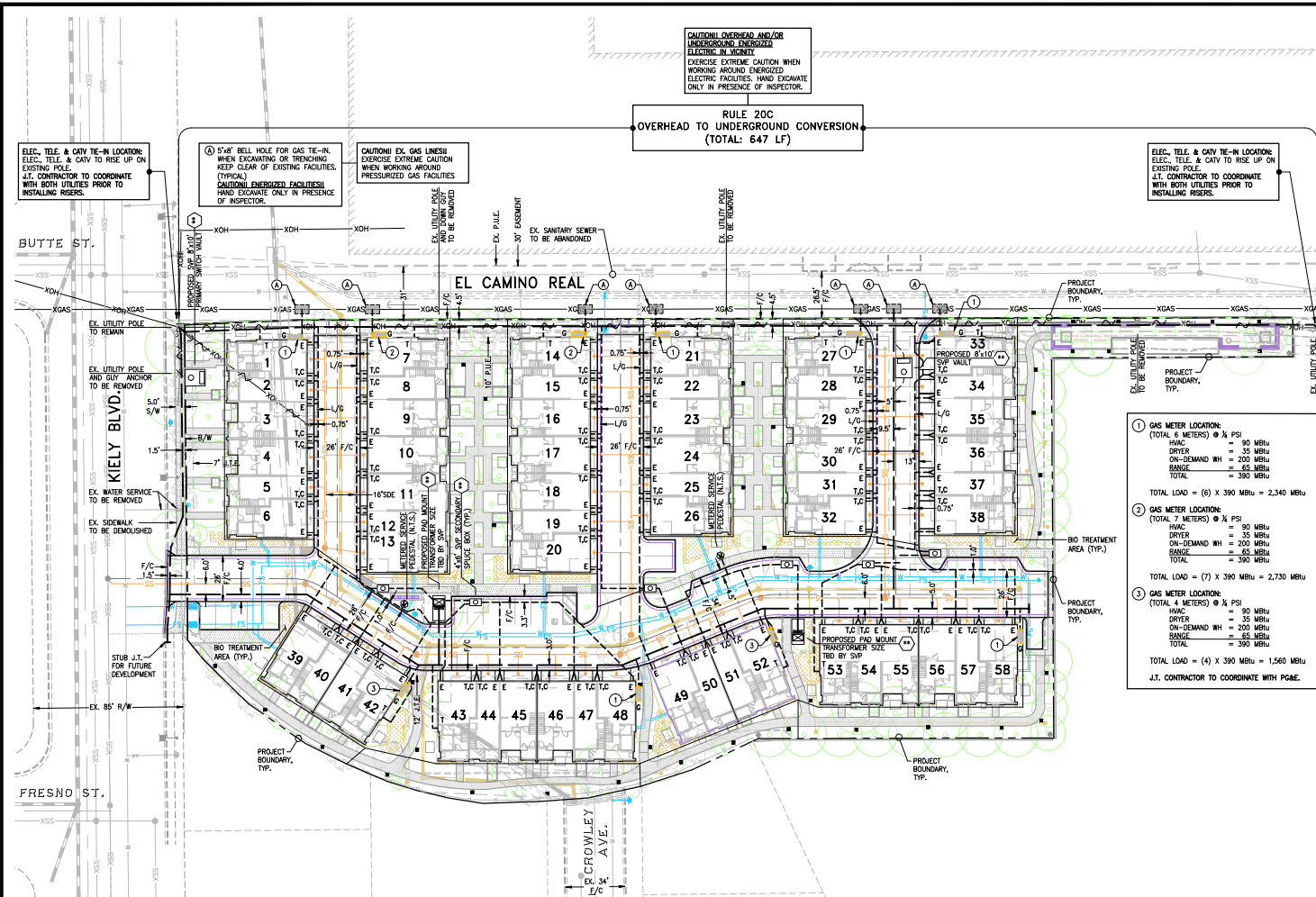


Civil  
Engineering  
Associates



C-5

DATE 4/1/2019



CAUTION! OVERHEAD AND/OR UNDERGROUND ENERGIZED ELECTRIC IN VICINITY. EXERCISE EXTREME CAUTION WHEN WORKING AROUND ENERGIZED ELECTRIC FACILITIES. HAND EXCAVATE ONLY IN PRESENCE OF INSPECTOR.

RULE 20C  
OVERHEAD TO UNDERGROUND CONVERSION  
(TOTAL: 647 LF)

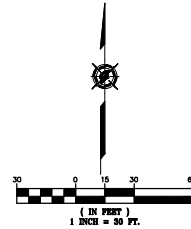
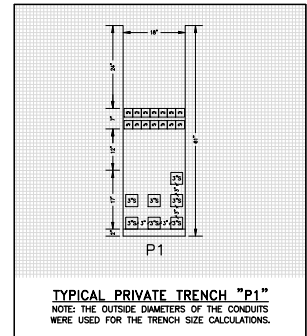
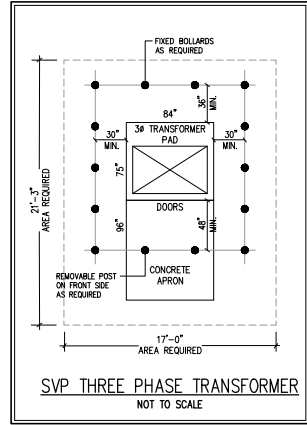
CAUTION! EX. GAS LINES! EXERCISE EXTREME CAUTION WHEN WORKING AROUND PRESSURIZED GAS FACILITIES. HAND EXCAVATE ONLY IN PRESENCE OF INSPECTOR.

ELEC., TELE. & CATV TIE-IN LOCATION: ELEC., TELE. & CATV TO RISE UP ON EXISTING POLE. J.T. CONTRACTOR TO COORDINATE WITH BOTH UTILITIES PRIOR TO INSTALLING RISERS.

### LEGEND

- EXISTING TRENCH OR UTILITIES
- PROPOSED TRENCH (DISTRIBUTION)
- PROPOSED TRENCH (SERVICE)
- PROPOSED STREET LIGHT TRENCH
- EXISTING UTILITY POLE BOX
- EXISTING UTILITY POLE
- EXISTING UTILITY POLE GUY ANCHOR
- 90"x106" PG&E PAD MOUNT TRANSFORMER
- 8"x10" SILICON VALLEY POWER PRIMARY SWITCH VAULT
- PROPOSED PAD MOUNT TRANSFORMER (SEE TBD BY SILICON VALLEY POWER)
- 4"x6" SVP SECONDARY SPLICE BOX (FULL TRAFFIC)
- PROPOSED NEW GUY ANCHOR

- GAS METER LOCATION:**  
(TOTAL 6 METERS) @ 1/4" PSI  
H/WC = 80 MBtu  
DRYER = 35 MBtu  
ON-DEMAND WH = 200 MBtu  
RANGE = 65 MBtu  
TOTAL = 380 MBtu  
TOTAL LOAD = (6) X 390 MBtu = 2,340 MBtu
- GAS METER LOCATION:**  
(TOTAL 7 METERS) @ 1/4" PSI  
H/WC = 80 MBtu  
DRYER = 35 MBtu  
ON-DEMAND WH = 200 MBtu  
RANGE = 65 MBtu  
TOTAL = 390 MBtu  
TOTAL LOAD = (7) X 390 MBtu = 2,730 MBtu
- GAS METER LOCATION:**  
(TOTAL 4 METERS) @ 1/4" PSI  
H/WC = 80 MBtu  
DRYER = 35 MBtu  
ON-DEMAND WH = 200 MBtu  
RANGE = 65 MBtu  
TOTAL = 390 MBtu  
TOTAL LOAD = (4) X 390 MBtu = 1,560 MBtu  
J.T. CONTRACTOR TO COORDINATE WITH PG&E.



**NOTE**  
PLEASE VERIFY THAT THE SERVICE POINTS IN THIS DRAWING MATCH YOUR DESIGN. IF THERE ARE ANY DISCREPANCIES, PLEASE CONTACT THE PROJECT MANAGER IN OUR OFFICE.

**NOTE TO UTILITIES:**  
PLEASE INDICATE TIE-IN POINTS ON INTENT RESPONSE

**R/W, P.U.E. & P.S.E. ACQUISITION NOTE:**  
CONTRACTOR TO VERIFY RIGHT OF WAY, PUBLIC UTILITY EASEMENT AND/OR PUBLIC SERVICE EASEMENT ACQUISITION WITH THE APPLICANT PRIOR TO CONSTRUCTION WITHIN AREAS OF QUESTION.

**PRELIMINARY PLANS**  
NOT FOR CONSTRUCTION

**CALL BEFORE YOU DIG**

<b>GIACALONE</b> DESIGN SERVICES, INC. 2005 CRENSHAW BLVD. #200 PASADENA, CA 92366 PH: 626.776.1101 WWW.GIACALONE.COM		<b>JOINT TRENCH INTENT</b> KB HOMES MOONLITE TOWNHOMES 2780 EL CAMINO REAL SANTA CLARA CALIFORNIA							
<b>PROJECT MANAGER:</b> S. PONCE <b>DESIGNED BY:</b> J. TIEU/M. BELLA <b>CHECKED BY:</b> D. CROWFOOT (P.E.) <b>SCALE:</b> 1"=30' <b>JOB NUMBER:</b> 18-191 <b>DATE LAST MODIFIED:</b> 02-14-19 <b>SHEET</b> <b>INT2</b> OF 2 SHEETS	<b>REVISIONS</b> <table border="1"> <tr> <th>NO.</th> <th>DESCRIPTION</th> <th>DATE</th> </tr> <tr> <td> </td> <td> </td> <td> </td> </tr> </table>	NO.	DESCRIPTION	DATE				<b>APPROVED</b> <table border="1"> <tr> <td> </td> </tr> </table>	
NO.	DESCRIPTION	DATE							