



## CALTRANS DISTRICT 4













City of Santa Clara  
June 4, 2019

**LEADERSHIP • INNOVATION • TEAMWORK**



## District 4



- Encompasses the 9 counties of Alameda, Contra Costa, Marin, Napa, San Francisco, San Mateo, Solano, Sonoma, and Santa Clara.
- Over 3,000 positions with an annual operating budget of over 560 million.
- Manages over 6,500 lane miles on over 770 centerline miles of conventional highways and 690 centerline miles of freeways, including 494 miles of managed lanes (HOV and Express Lanes).
- 130 Construction contracts value of \$1.2B in current FY18/19.
- Operates seven toll bridges: Antioch, Benicia, Carquinez, Richmond-San Rafael, San Mateo-Hayward, San Francisco-Oakland, and Dumbarton.

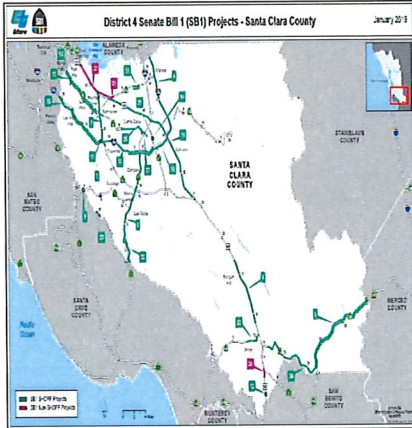
POST MEETING MATERIAL



## Safety: 6-Inch Striping & Type XI Sign Panels



## Senate Bill 1 –



**Santa Clara County**  
Total # of Projects: 38  
Total Cost: \$ 86.3M

Note: SB-1 projects costs includes funds that have been allocated but does not include future funds that will be awarded.







## Partnering with the City of Santa Clara Partnering & Accomplishments

- **Projects in Environmental:**
  - Upgrade/Install new Accessible Pedestrian Signals (APS) (Begin Construction: September 2022)
  - US 101 De La Cruz Blvd./ Trimble Rd. Interchange (San Jose). (Begin Construction: December 2021)
- **Projects in Construction:**
  - Pavement Preservation (CAPM) on Route 82 in the City of Santa Clara (\$8M) (End Construction: January 2020)
- **Completed Projects:**
  - Crosswalk enhancements (\$800K)
- **Levi's Stadium Coordination's & Partnering:**
  - Partnering with the City to expedite the SR 82 crosswalk enhancements (Financial Contribution)
- **Gateway to the City of Santa Clara, El-Camino and Lawrence Expressway Encroachment Permit:**



## Partnering with Santa Clara County

- **Projects in Environmental Phase:**
  - US 101 /Mabury RD Improvement
  - US101/ Zanker RD Improvement
  - SR 280/Wolfe RD Interchange
  - SR 280/Winchester BLVD Improvement Project
- **Projects in Design Phase:**
  - US101/25 Interchange Improvement (SB1)
  - SR 152 Pavement Rehab. (First ST, Gilroy)
  - US 101 Express lanes, phases 4&5
  - US 101 De La Cruz Blvd./ Trimble Rd. Interchange.
- **Projects in Construction Phase:**
  - SCL 101 Express Lanes Phase 3 (SB1)
  - SR 237 Express Lane Phase 2
  - US 101/SR237/Mathilda AVE (SB1)
  - SR 280/880/Stevenson CRK Landscape
- **Ground breaking. 101 managed lane and Mathilda Ave**





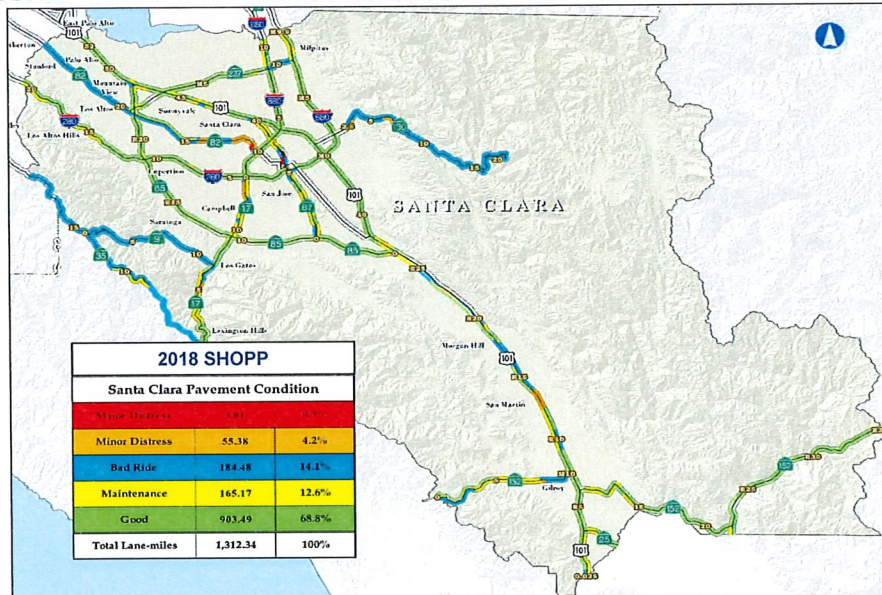
## Partnering: Litter and Homeless

### PROJECT DESCRIPTION

- The project is located on Route 17, 101 and 280, 680, and 880 in the City of San Jose in Santa Clara County.
- Scope: Remove litter, debris, biological & chemical Hazardous waste, clear vegetation, trim and remove trees, construct hardened fencing, landscaping & hardscaping, repair drainage, and other Hwy facilities.
- Cost estimate \$10.6M
- Estimated Completion Date May 2019



## Asset Management Pavement Condition





***Caltrans***

**TONY TAVARES**

**District 4 Director**

**(510) 286-5900**

**Questions & Answers**