

# Montague Park Playground Preferred Schematic Design



- |                                    |                                    |                                |                           |
|------------------------------------|------------------------------------|--------------------------------|---------------------------|
| 1 Renovate Ex. Recreation Building | 5 New Playground: Age 6-12 years   | 9 More New Landscaping         | 13 Upgraded Site Lighting |
| 2 New Restroom Addition            | 6 New Fitness Stations for Seniors | 10 Improved Site Furnishings   |                           |
| 3 New Covered Picnic Area          | 7 Existing Multi-Use Meadow        | 11 New Group Picnic: Uncovered |                           |
| 4 New Playground: Age 2-5 years    | 8 New Looped Path                  | 12 New Half Basketball Court   |                           |
|                                    | 8a Repair Ex. Path                 |                                |                           |





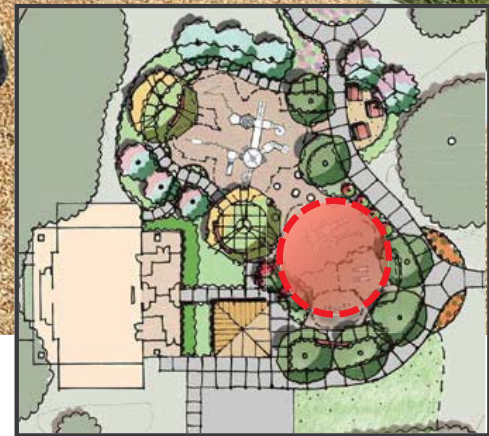
# Montague Park Playground Preferred Option 2 overview





# Montague Park

## Playground Option 2 - ages 2-5





# Montague Park Playground Option 2 - ages 2-5





# Montague Park

## Playground Option 2 - ages 6-12





# Montague Park

## Playground Option 2 - ages 6-12





# Montague Park Playground Option 2 - ages 6-12





# Montague Park

## Playground-Elements of Play



*slr*  
landscape  
structures

#1 Sliding #2 Balancing #3 Brachiating #4 Spinning #5 Climbing #6 Swinging #7 Running



# Montague Park Playground

Elements of Play	Ages 2-5	Level of Play	* Proposed Capacity	Ages 6-12	Level of Play	* Proposed Capacity	Total Capacity
Balancing	2	B=1 I=1 A=0	9	2	B=0 I=1 A=1	15	24
Sliding	3	B=2 I=1 A=0	7	1	B=0 I=0 A=1	3	10
Brachiating	1	B=0 I=0 A=1	3	1	B=0 I=1 A=0	3	6
Spinning	0	B=0 I=0 A=0	0	1	B=0 I=1 A=0	5	5
Climbing	6	B=3 I=2 A=1	18	7	B=2 I=3 A=2	25	43
Swinging	2	B=2 I=0 A=0	2	2	B=2 I=0 A=0	2	4
Running/Free Play	2	N/A	21	4	N/A	22	43
<b>Total:</b>	<b>16</b>		<b>60</b>	<b>18</b>		<b>75</b>	<b>135</b>
Inclusive Play Elements	7	B=3 I=4 A=0	16	3	B=1 I=2 A=0	15	31

## Level of Play:

B: Beginner    I: Intermediate    A: Advanced



City of  
Santa Clara