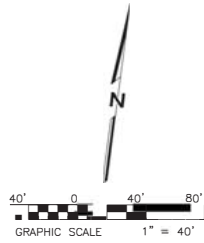


Construction contractor agrees that in accordance with generally accepted construction practices, contractor will be required to assume sole and complete responsibility for life site conditions during the course of construction of the project including safety of all persons and assets. Not this requirement shall be made to apply

Drawn by: J. C. RUTH AND GOING, INC. Map 1903 - EXISTING CONDITIONS.dwg
Date: 05/05/2019 10:12:10 AM

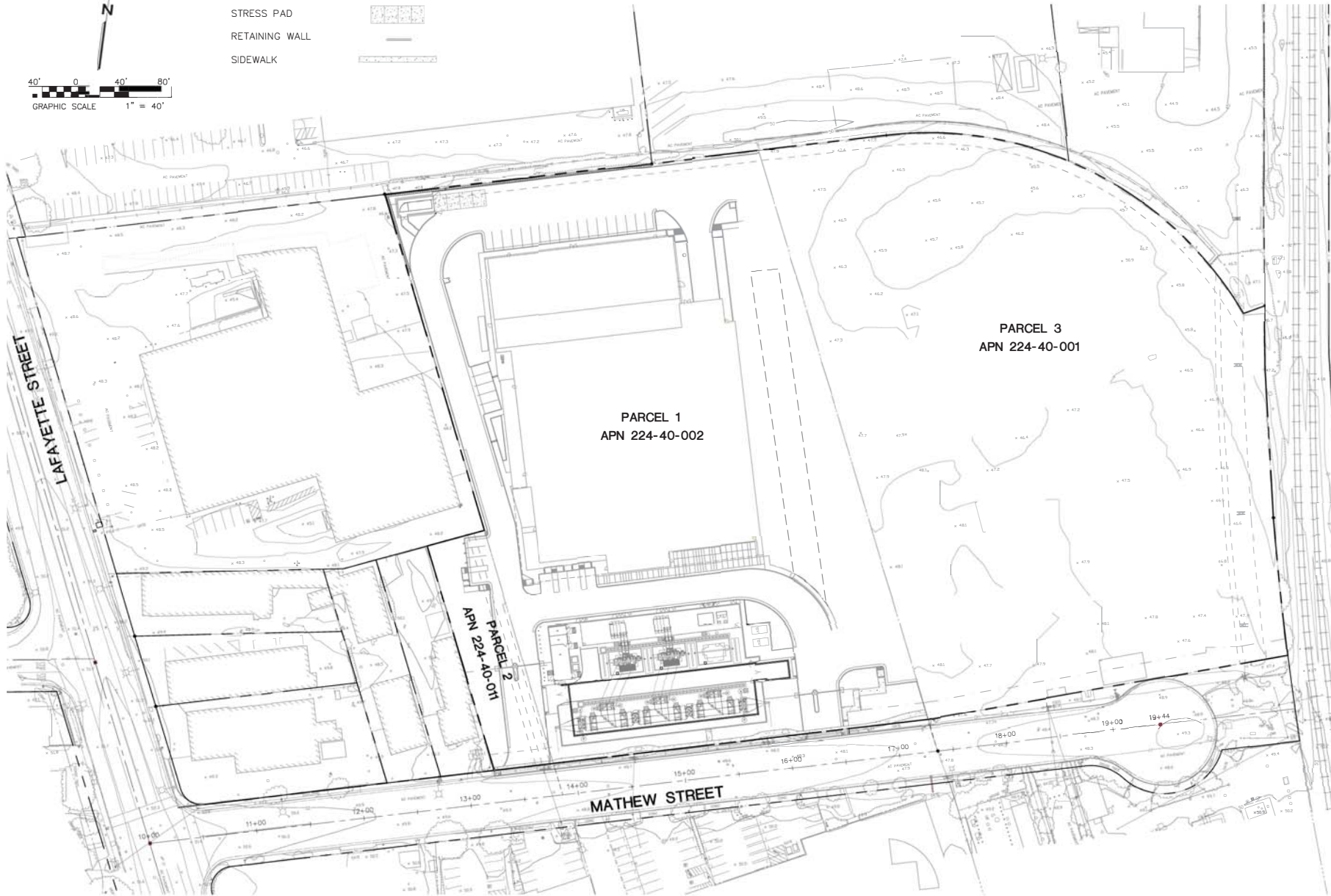


LEGEND
VERTICAL CURB
CURB & GUTTER
STRESS PAD
RETAINING WALL
SIDEWALK



NOTES:

1. SEE SHEET 2 FOR BOUNDARY/EASEMENT INFORMATION.
2. SPOT ELEVATIONS AND 1 FOOT CONTOUR INTERVAL BASED ON CSC BENCHMARK (SEE SHEET 1).
3. CONTOURS SHOWN ARE BASED ON AERIAL PHOTOMETRICS DATED OCTOBER 2017 AND SUPPORTED WITH GROUND SURVEY.



VESTING TENTATIVE MAP

EXISTING CONDITIONS

**VANTAGE - MCLAREN
DATA CENTER**

SANTA CLARA CALIFORNIA

R+G
RUTH AND GOING, INC.
Civil Engineers and Surveyors
2916 THE ALAMEDA SANTA CLARA, CA 95060
TEL (408) 238-2400 FAX (408) 238-2410



Designed: J. C. RUTH
Drawn: J. C. RUTH
Checked: J. C. RUTH
Scale: 1/8" = 1'-0"
All Rights Reserved

Revisions	Mark	Date	By

Scale AS SHOWN

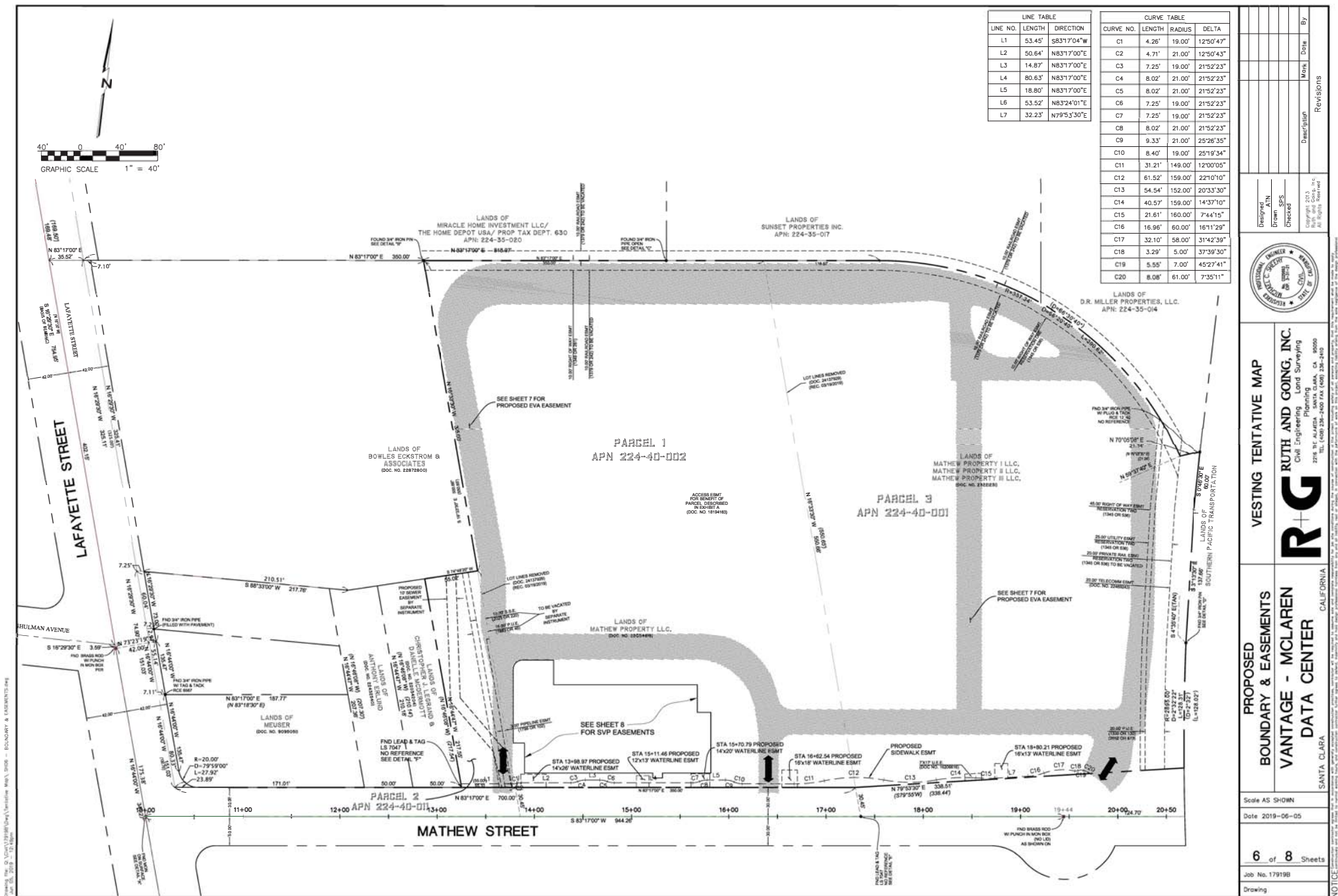
Date 2019-06-05

3 of 8 Sheets

Job No. 179199

Drawing

NOTICE: This drawing is the property of RUTH AND GOING, INC. and is loaned to you for your use only. It is not to be reproduced, copied, or used in any way without the written consent of RUTH AND GOING, INC. All rights reserved.



60KV TRANSMISSION POLE, STATION SERVICE AND UNDERGROUND UTILITIES (UGEE)

LINE TABLE			LINE TABLE			LINE TABLE		
LINE	BEARING	DISTANCE	LINE	BEARING	DISTANCE	LINE	BEARING	DISTANCE
L1	N 6°43'00" W	31.00'	L7	N 6°43'00" W	28.49'	L13	N 6°43'00" W	4.99'
L2	N 83°17'00" E	11.70'	L8	N 83°17'00" E	13.99'	L14	N 83°17'00" E	131.85'
L3	N 83°17'00" E	75.86'	L9	N 83°17'00" E	62.50'			
L4	N 83°17'00" E	32.12'	L10	N 83°17'00" E	49.81'	CURVE TABLE		
L5	N 6°43'00" W	25.33'	L11	N 6°43'00" W	4.99'	CURVE	RADIUS	DELTA
L6	N 83°17'00" E	147.75'	L12	N 83°17'00" E	10.00'	C1	9.50'	90°00'00"

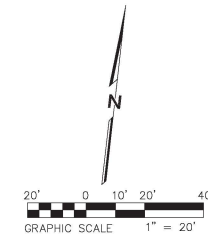
LINE TABLE			LINE TABLE			LINE TABLE			LINE TABLE		
LINE	BEARING	DISTANCE	LINE	BEARING	DISTANCE	LINE	BEARING	DISTANCE	LINE	BEARING	DISTANCE
L15	N 83°52'00"E	35.89	L21	N 6°43'00"E	19.50	L27	N 83°17'00"E	37.52	L33	N 83°17'00"E	8.77
L16	N 28°52'10"E	19.03	L22	N 63°17'00"E	16.04	L28	N 6°43'00"E	22.70	L34	N 6°43'00"E	13.66
L17	N 6°43'00"W	10.66	L23	S 38°15'34"W	23.34	L29	N 83°17'46"E	14.86	L35	N 83°17'00"E	7.65
L18	S 83°17'00"E	11.00	L24	N 6°43'00"E	68.37	L30	S 6°45'49"E	20.00	L36	N 6°43'00"E	5.78
L19	N 6°43'00"E	18.62	L25	N 83°17'00"E	19.09	L31	S 63°17'46"W	14.86	L37	S 51°14'34"E	74.34
L20	S 83°17'00"E	3.95	L26	N 6°43'00"E	23.39	L32	N 6°43'00"E	5.37	L38	S 51°14'34"E	50.71

CURVE TABLE			
CURVE	RADIUS	DELTA	LENGTH
C2	52.00'	27°44'08"	25.17

LINE TABLE			LINE TABLE			CURVE TABLE			
LINE	BEARING	DISTANCE	LINE	BEARING	DISTANCE	CURVE	RADIUS	DELTA	LENGTH
L42	N 63°17'00" E	20.30	L42	N 63°17'00" E	20.30	C3	10.00'	90°00'00"	15.71'
L43	S 6°43'00" E	62.78	L43	S 6°43'00" E	62.78	C5	10.00'	89°54'55"	15.69
L44	S 83°17'00" W	10.44	L44	S 83°17'00" W	10.44	C6	3.00'	90°00'00"	4.71'
L45	N 6°42'52" W	20.00	L45	N 6°42'52" W	20.00				
L46	N 83°24'05" E	12.35	L46	N 83°24'05" E	12.35				
L47	N 6°36'21" W	52.80	L47	N 6°36'21" W	52.80				
L48	N 63°17'00" E	8.00	L48	N 63°17'00" E	8.00				
L49	N 6°43'00" W	14.78	L49	N 6°43'00" W	14.78				
L50	N 63°17'00" E	8.00	L50	N 63°17'00" E	8.00				
L51	N 6°43'00" W	14.78	L51	N 6°43'00" W	14.78				

LINE TABLE		
LINE	BEARING	DISTANCE
L39	S 6°43'00" E	2.30'
L40	N 83°17'00" E	40.30'
L41	N 79°53'30" E	321.73'

Line Table		
Line #	Length	Direction
L65	33.669	S20° 07' 27.48"
L63	33.669	S20° 07' 27.48"
L69	41.409	N06° 43' 00.00"
L67	41.409	N06° 43' 00.00"
L66	30.000	N83° 17' 00.00"
L68	30.000	N83° 17' 00.00"
L64	30.841	N83° 17' 00.00"
L62	30.841	N83° 17' 00.00"



_____ ELECTRIC UTILITY EASEMENT; SUBSTATION (SVP)

_____ 60KV TRANSMISSION POLE, LINE STATION SERVICE &
UNDERGROUND UTILITIES EASEMENTS. (UGEE)

----- INGRESS & EGRESS EASEMENTS (IEE)

----- OVERHEAD LINES EASEMENTS (OHE)