



Parks and Recreation Commission

**Magical Bridge Playground,
Central Park, Santa Clara**

October 15, 2019



Meeting Agenda

- Introduction to Magical Bridge & Design Team
- Playground Funding
- Review Design Elements of the Playground
- Central Park Master Plan Review
- Playground Site Review
- Project Schedule
- Commission Input and Questions



**City of
Santa Clara**
The Center of What's Possible

Magical Bridge Design Team



Magical Bridge Design Team

- Magical Bridge Foundation
- The City of Santa Clara
- The Community of Santa Clara



Magical Bridge Foundation Team

- Peter Jensen Playground Designer
- Olenka Villarreal Founder and CEO
- Jill Asher Founder and Executive Director
- Maria Hassid Operations
- Kris Loew Marketing
- Deborah Getz Community Outreach



**City of
Santa Clara**
The Center of What's Possible

MAGICAL BRIDGE FOUNDATION

Beyond innovative playgrounds, we build inclusive communities



**DESIGN AND
DEVELOPMENT**



**COMMUNITY
ENGAGEMENT**



**FUNDRAISING
SERVICES**



**City of
Santa Clara**
The Center of What's Possible

ADD LINK TO VIDEO

https://www.youtube.com/watch?v=_7l4e2aWuVM

https://youtu.be/_7l4e2aWuVM



Project Funding



Project Funding

- City of Santa Clara Funding - \$1.8 Million
- County of Santa Clara Grant Inspired by the Magical Bridge Playground - \$1.7 Million
- Magical Bridge Foundation Fund Community Raising Effort - \$1 Million (anticipated)



Design Elements of Magical Bridge Playground



Where Everyone Plays

Abilities and Disabilities | Visible and Invisible | Every Age and Size



- **1 in 4 people live with a disability**
- **Only 10% are physical**
- **The other 90% are cognitive, sensory, social, or the result of aging**



CURRENT PLAYGROUND BARRIERS

A TYPICAL PLAY STRUCTURE



LOOSE SURFACES

RAISED PLATFORMS

DEFINED PATHS

RAISED BORDERS

DULL EQUIPMENT

NO GATES

NO SHADE

NO GROUP PLAY

NO RETREATS

DISORDER

ONE CHALLENGE LEVEL



MAGICAL BRIDGE DESIGNS FOR *ALL*

- Predictability and way-finding
- Smooth travels paths throughout
- Variety of play modalities for all abilities
- Sizing of equipment and age
- Community gathering spaces
- Multiple retreat opportunities
- Sensory-pleasing music element(s)
- Multiple challenge levels
- Perimeter fencing
- Shade
- No loose surfacing
- Education/awareness ongoing programs
- Kindness at the core
- Mindfully selected musical experience(s)



CITY OF SANTA CLARA PLAYGROUND DESIGN PRINCIPALS

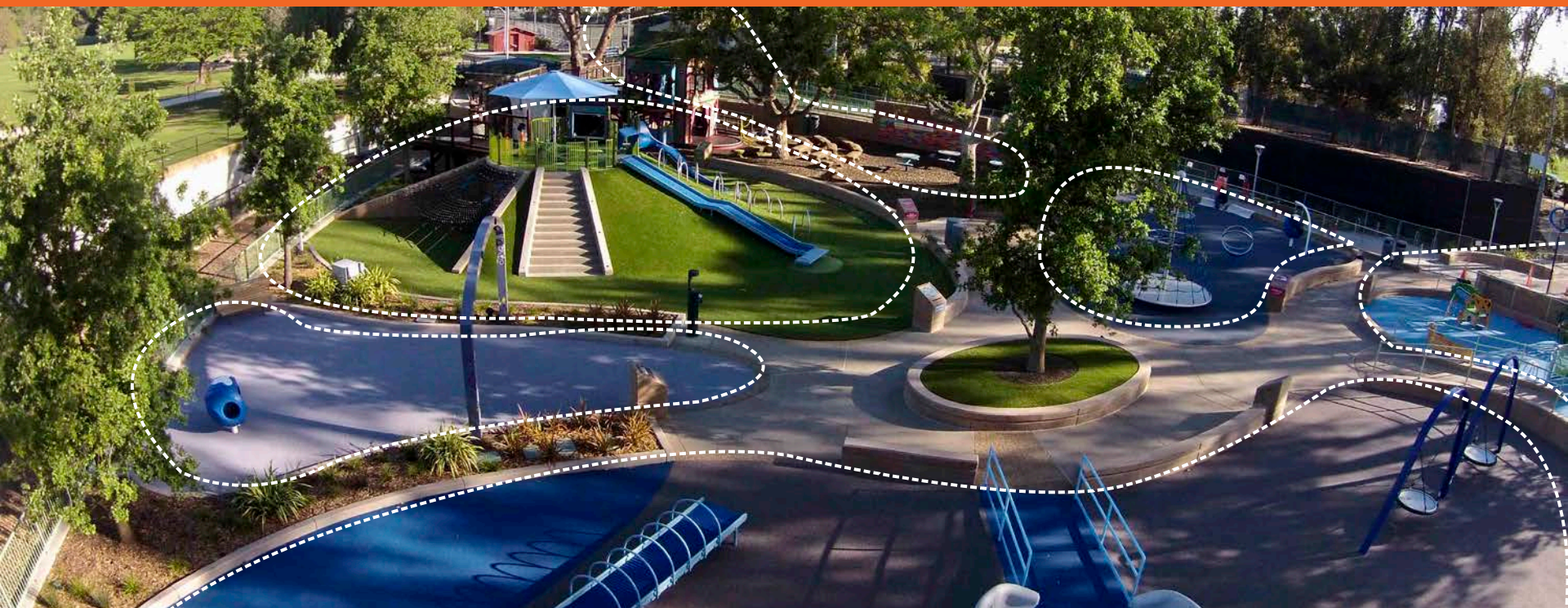
- Inclusion by design (access, age friendly, all abilities, social/emotional/developmental)
- Physical elements of play (spinning, climbing, sliding, balancing, upper body/brachiating, swinging/swaying, lower body/running, free-play/imagination/tech)
- Levels of play (beginner, intermediate, advanced)
- Integration with nature (and shade)
- Environmentally sustainable (materials, sourcing, maintenance, operations)



**City of
Santa Clara**
The Center of What's Possible

Designed for All

Predictable Play Zones | Smooth Surfaces | Ample Space





PLAY ZONES



SLIDE & CLIMB MOUND

- Sliding helps coordination, balance and movement
- Top of mound is uniquely accessible for all



SWING & SWAY ZONE

- Swinging creates vestibular stimulation critical for development
- Gentle swaying soothes and calms, providing a relaxing experience



SPIN ZONE

- Rotary vestibular input, is the most powerful form of sensory input that the brain can process
- Accessible for all ages and abilities so everyone can spin together



PLAY ZONES



TOT ZONE

- Outdoor play is a critical way for young children to create friendships, explore, take risks, develop fine and gross motor development
- Social play teaches the valuable lessons of inclusion and kindness



INNOVATION & MUSIC

- Music stimulates more parts of the brain than any other human function, motivating interaction
- Musical collaboration facilitates socialization, and gives non-verbal people a way to express themselves



PLAYHOUSE & STAGE

- Playhouse provides full accessibility to the second story
- The playhouse and stage provide a space for imaginative play and a community gathering place



**City of
Santa Clara**
The Center of What's Possible

Central Park Master Plan Review



CENTRAL PARK MASTER PLAN PRINCIPLES

- Honor the legacy and blend of passive and active recreational uses in Central Park Smooth
- Provide public visibility for park amenities, trails and green open space
- Provide context sensitivity to local community, minimizing impacts on neighborhoods
- Preserve Green Space
- Provide connectivity with adjacent uses and accessibility for the greater community
- Create community and “sense of place” by re-imagining the public event spaces and reinvesting in Central Park as the heart of the community
- Increase Park Capacity to accommodate a growing population – serve more people in the same space



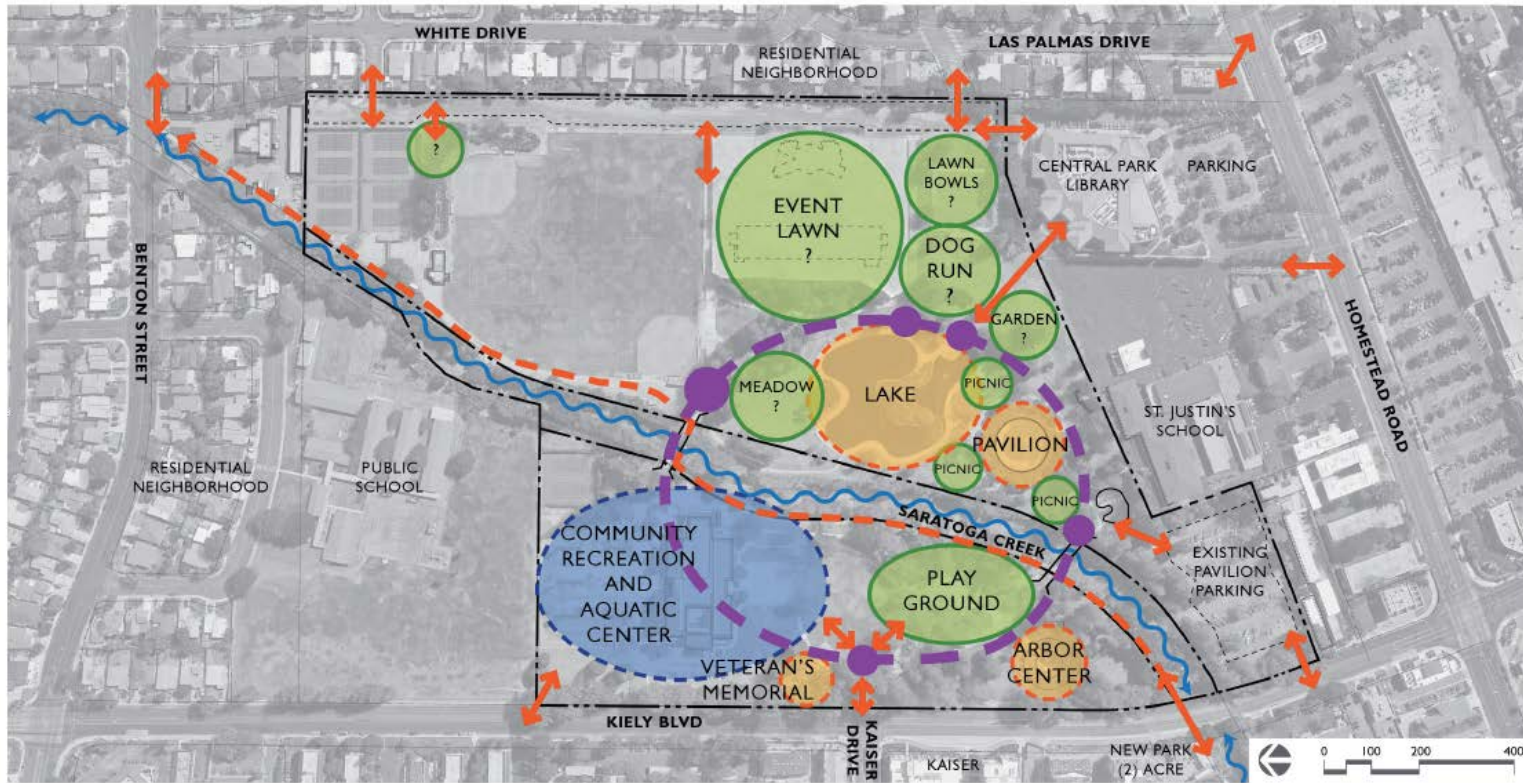
CENTRAL PARK MASTER PLAN PRINCIPLES

- Use principles of inclusive design to welcome visitors of all abilities.
- Promote community health and wellness by providing age-friendly opportunities for intergenerational social and cultural exchange, and offer something for everyone.
- Integrate and enhance, where feasible, the natural habitat with the built environment.
- Use research based best practices to approach park design and assess community recreation benefits (provide measurable/desired outcomes).
- Proactively integrate public safety and security considerations into the design.



EXISTING CONDITIONS







MASTER PLAN TIME LINE

Years 1-5 Project

- Arbor Center Area
- Pavilion Parking Lot and Pedestrian Connection
- Saratoga Creek Connector Trail
- New 50 Meter Multi-Use Pool
- Lake Renovation



MASTER PLAN – ARBOR CENTER





Playground Site Review



**City of
Santa Clara**
The Center of What's Possible





**City of
Santa Clara**
The Center of What's Possible





**City of
Santa Clara**
The Center of What's Possible





**City of
Santa Clara**
The Center of What's Possible





Project Schedule



SCHEDULE

- Playground Design Phase – Winter 2019/2020
- Fund Raising – Underway
- Construction Drawings – Spring/Summer 2020
- Playground Bid – Winter 2020/2021
- Fund Raising Completion – Summer 2021
- Playground Construction – Summer 2021
- Playground Opening – Winter 2022



Commission Input and Questions



**City of
Santa Clara**
The Center of What's Possible

Magical Bridge Palo Alto

