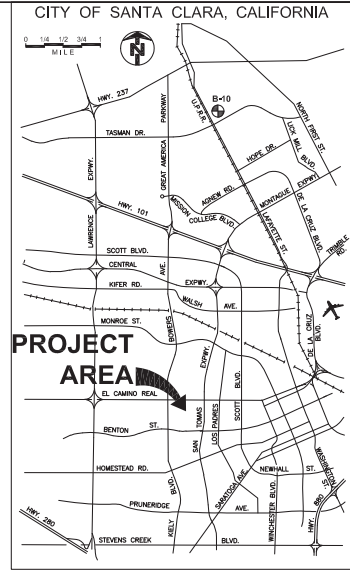




PUBLIC WORKS DEPARTMENT

2020 ANNUAL STREET MAINTENANCE AND REHABILITATION PROJECT
CITY OF SANTA CLARA, SANTA CLARA COUNTY, CALIFORNIA.



VICINITY MAP
N.T.S.

APPROVED BY:

THE CITY OF SANTA CLARA HEREBY ACCEPTS THESE PLANS FOR CONSTRUCTION, AS BEING IN GENERAL COMPLIANCE WITH PLANS PREPARATION REQUIREMENTS OF THIS GOVERNMENT. RESPONSIBILITY FOR THE COMPLETENESS AND ACCURACY OF THE PLANS AND RELATED DESIGN RESIDES WITH THE ENGINEER AND ENGINEERING FIRM OF RECORD.

DATE: _____
CRAIG MOBECK
DIRECTOR OF PUBLIC WORKS

REVIEWED BY:

DATE: _____
WATER AND SEWER UTILITIES DEPARTMENT

DATE: _____
STREET & AUTOMOTIVE SERV. MAINTENANCE DIV.

DATE: _____
ELECTRIC DEPARTMENT

DATE: _____
TRAFFIC ENGINEERING DIVISION

DATE: _____
DESIGN DIVISION

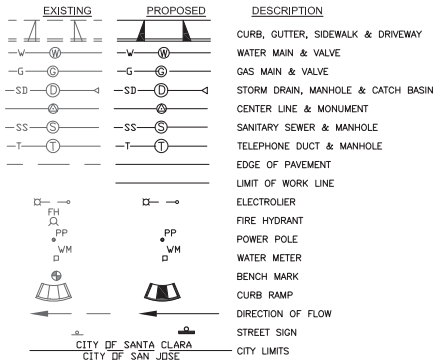
CERTIFICATION OF PEER REVIEW:

THE UNDERSIGNED HEREBY CERTIFIES THAT A PROFESSIONAL PEER REVIEW OF THESE PLANS AND THE REQUIRED DESIGNS WAS CONDUCTED BY ME, A PROFESSIONAL ENGINEER WITH EXPERTISE AND EXPERIENCE IN THE APPROPRIATE FIELD OF ENGINEERING EQUAL TO OR GREATER THAN THE ENGINEER OF RECORD, AND THAT APPROPRIATE CORRECTIONS HAVE BEEN MADE.

DATE: _____
NAME

SHEET INDEX	
SHEET NO.	DESCRIPTION
1	TITLE SHEET
2	KEY MAP AND CITY BENCHMARK
PAVEMENT IMPROVEMENT LAYOUTS	
3-4	AGNEW RD (FROM SAN TOMAS CREEK TO LAFAYETTE ST)
5-6	BELLOMY ST (FROM SARATOGA AVE TO JACKSON AVE)
7	BELLOMY ST (FROM LAFAYETTE ST TO PARK AVE)
8	JACKSON ST (FROM MARKET ST TO BELLOMY ST)
9-14	KIELY BLVD (FROM STEVENS CREEK BLVD TO EL CAMINO REAL)
15-17	LAFAYETTE ST (FROM BELLOMY ST TO 230' N. OF REEVE ST)
18-21	LICK MILL BLVD (FROM MONTAGUE EXPY TO TASMAN DR)
22-24	MARKET ST (FROM SARATOGA AVE TO LAFAYETTE ST)
25-27	MONROE ST (FROM HOMESTEAD RD TO CABRILLO AVE)
28-32	SARATOGA AVE (FROM STEVENS CREEK BLVD TO MARKET ST)
33	WESTRIDGE RD (FROM FOREST AVE TO PRUNERIDGE AVE)
34-35	WOODHAMS RD (FROM STEVENS CREEK BLVD TO PRUNERIDGE AVE)
36	WOODHAMS RD (FROM FORBES AVE TO FAIRLANE AVE)
SIGNING AND STRIPING LAYOUTS	
37-38	AGNEW RD (FROM SAN TOMAS CREEK TO LAFAYETTE ST)
39-40	BELLOMY ST (FROM SARATOGA AVE TO JACKSON AVE)
41	BELLOMY ST (FROM LAFAYETTE ST TO PARK AVE)
42	JACKSON ST (FROM MARKET ST TO BELLOMY ST)
43-48	KIELY BLVD (FROM STEVENS CREEK BLVD TO EL CAMINO REAL)
49-51	LAFAYETTE ST (FROM BELLOMY ST TO 230' N. OF REEVE ST)
52-55	LICK MILL BLVD (FROM MONTAGUE EXPY TO TASMAN DR)
56-58	MARKET ST (FROM SARATOGA AVE TO LAFAYETTE ST)
59-61	MONROE ST (FROM HOMESTEAD RD TO CABRILLO AVE)
62-66	SARATOGA AVE (FROM STEVENS CREEK BLVD TO MARKET ST)
67	WESTRIDGE RD (FROM FOREST AVE TO PRUNERIDGE AVE)
68-69	WOODHAMS RD (FROM STEVENS CREEK BLVD TO PRUNERIDGE AVE)
70	WOODHAMS RD (FROM FORBES AVE TO FAIRLANE AVE)
CURB RAMP GRADING DETAILS	
71, 72	CURB RAMP QUANTITY SUMMARY SHEET
73-81	AGNEW RD
82-92	KIELY BLVD
93-97	LAFAYETTE ST
98-109	MONROE ST
110-112	WESTRIDGE RD
113	DIGOUT QUANTITY SUMMARY SHEET
114	CONSTRUCTION DETAILS
115	CONSTRUCTION BEST MANAGEMENT PRACTICES (BMPs)

LEGEND SYMBOLS



APPLICABLE STANDARD PLANS

INCLUDE BUT ARE NOT LIMITED TO THE FOLLOWING:

SANTA CLARA STANDARD DETAILS — STREETS

- ST-11 MONOLITHIC CURB AND GUTTER
- ST-12 MONOLITHIC CURB, GUTTER AND SIDEWALK
- ST-14 CURBED CURB RAMP
- ST-15 STRAIGHT CURB RAMP
- ST-16 CURB RAMP GROOVING AND TRUNCATED DOME DETAILS
- ST-17 CONCRETE JOINTS
- ST-18 DOWEL CONNECTIONS
- ST-20 MONUMENT
- ST-21 SPECIAL MONUMENT BOX ADJUSTMENT

SANTA CLARA STANDARD DETAILS — DRAINAGE STRUCTURE

- DS-1 MANHOLE
- DS-5 MANHOLE RAISING
- DS-6 CONCRETE COLLAR

SANTA CLARA STANDARD DETAILS — TRAFFIC SECTION

- TR-1 STREET NAME SIGN AND LOCATION
- TR-7 TRAFFIC SIGNAL DETECTOR LOOPS SPACING
- TR-8 TYPICAL STOP INTERSECTION

SANTA CLARA STANDARD DETAILS — APPENDIX SECTION

- AP-A APPENDIX A GENERAL NOTES



Designer Stamp

PROJECT No. CE		XX-XX-XX	
ACCOUNT No.		XXX-XXX-XXXX-XXXX	
DATE	No.	REVISION	B

CITY OF SANTA CLARA
ENGINEERING DEPARTMENT
2020 ANNUAL STREET MAINTENANCE
AND REHABILITATION PROJECT

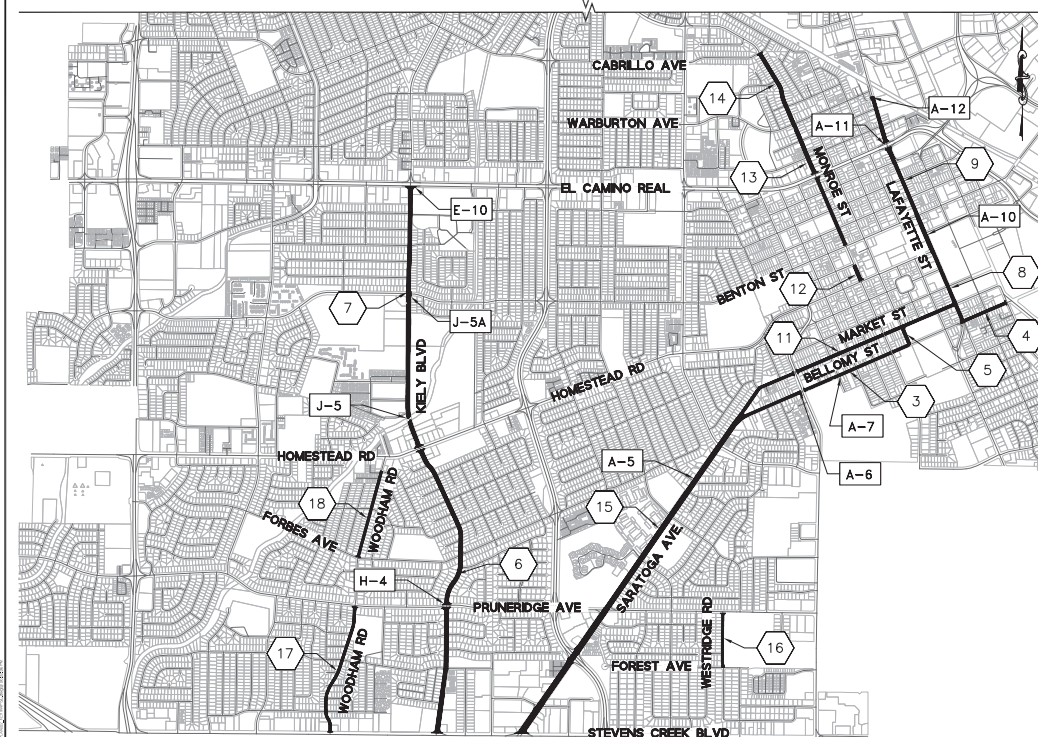
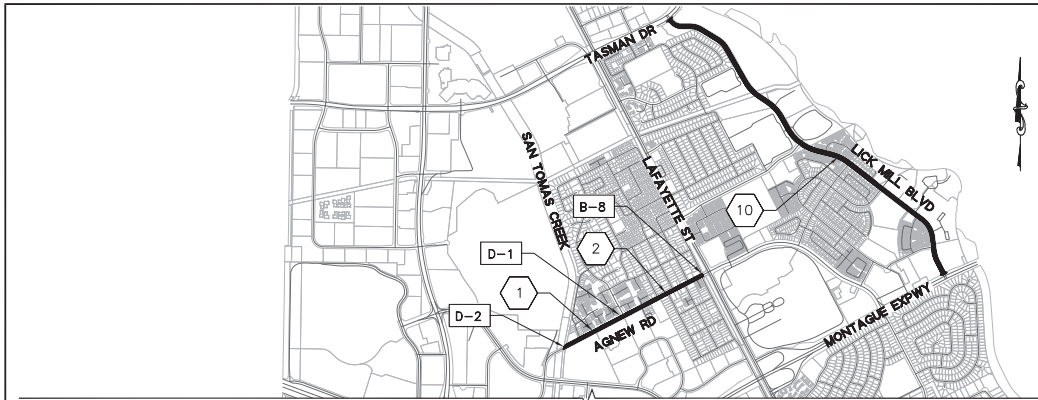
TITLE SHEET

APPROVED BY		TITLE	
DATE		DATE	
DESIGNED BY	DS/HA	DATE	R.C.E. No.
DRAWN BY	EB/JL	10/22	Survey No.
CHECKED BY	MF	10/22	TRACING No.
AS BUILT BY	-	-	XXX
		SHEET 1 OF XX	



Know what's below.
Call before you dig.

65% SUBMITTAL, DATED 10/22/19
NOT FOR CONSTRUCTION



PROPOSED STREET TREATMENT SUMMARY

LOCATION NO. #	STREET NAME	BEGIN	END	PAVEMENT AREA (SF)	PROPOSED TREATMENT
1	AGNEW RD	SAN TOMAS CREEK	LAKESHORE DR	8,800	2" RHMA MILL AND FILL
2	AGNEW RD	LAKESHORE DR	LAFAYETTE ST	11,500	2" RHMA MILL AND FILL
3	BELLOMY ST	SARATOGA AVE	JACKSON ST	15,700	3" HMA MILL AND FILL
4	BELLOMY ST	LAFAYETTE ST	PARK AVE	4,000	SLURRY SEAL
5	JACKSON ST	MARKET ST	BELLOMY ST	1,800	SLURRY SEAL
6	KIELY BLVD	STEVENS CREEK BLVD	HOMESTEAD RD	41,200	SLURRY SEAL
7	KIELY BLVD	HOMESTEAD RD	EL CAMINO REAL	34,600	2" RHMA MILL AND FILL
8	LAFAYETTE ST	BELLOMY ST	HOMESTEAD RD	8,000	2" RHMA MILL AND FILL
9	LAFAYETTE ST	HOMESTEAD RD	230' N. OF REEVE ST	19,400	SLURRY SEAL
10	LICK MILL BLVD	MONTAGUE EXPWY	TASMAN DR	55,100	SLURRY SEAL
11	MARKET ST	SARATOGA AVE	LAFAYETTE ST	19,200	SLURRY SEAL
12	MONROE ST	HOMESTEAD RD	BENTON ST	1,900	SLURRY SEAL
13	MONROE ST	BENTON ST	WARBURTON AVE	12,900	2" RHMA MILL AND FILL
14	MONROE ST	WARBURTON AVE	CABRILLO AVE	9,700	SLURRY SEAL
15	SARATOGA AVE	STEVENS CREEK BLVD	MARKET ST	65,900	SLURRY SEAL
16	WESTRIDGE RD	FOREST AVE	PRUNERIDGE AVE	3,800	2" HMA MILL AND FILL
17	WOODHAMS RD	STEVENS CREEK BLVD	PRUNERIDGE AVE	11,000	SLURRY SEAL
18	WOODHAMS RD	FORBES AVE	FAIRLANE AVE	7,300	2" HMA MILL AND FILL

BENCHMARKS, CITY OF SANTA CLARA

CITY NO. #-#	USC & GS NO.	SCVWD NO.	DESCRIPTION	BENCHMARK 2018 NAVD88
A-5			SARATOGA AVE & NEWHALL ST, MOST NORTHERLY CORNER, CHISELED SQUARE ON MOST SOUTHERLY CORNER OF TRAFFIC CONTROLLER BASE. (Reset 1983)	99.61
A-6			WINCHESTER BLVD & BELLOMY ST, NW CORNER, TOP OF LETTER "C" IN WORD "CAL" ON TOP OF CATCH BASIN HOOD, WEST SIDE OF WINCHESTER BLVD, 51' NORTH OF BELLOMY ST CENTERLINE. (Reset 1974)	95.48
A-7	P-323		BELLOMY ST & LINCOLN ST, BRASS DISK IN SE CORNER OF PLANTER, 3' SOUTH OF FACE OF CURB ON BELLOMY ST, 35'± EAST OF CENTERLINE OF LINCOLN ST.	95.65
A-9			BENTON ST & MONROE ST, SE CORNER, TOP OF LETTER "C" IN WORD "CAL" ON TOP OF CATCH BASIN HOOD. (Reset 1974)	78.21
A-10			BENTON ST & LAFAYETTE ST, SW CORNER, CHISELED SQUARE ON NE CORNER OF A 6'x12' CONCRETE PLANTER, 2' BACK OF WALK.	77.29
A-11			EL CAMINO REAL & LAFAYETTE ST, NW CORNER, CHISELED CROSS ON TOP OF CATCH BASIN HOOD. (Reset 1990)	65.50
A-12	T-111		LAFAYETTE ST & S.P.R.R. (S.F. MAIN LINE), SE CORNER, BRASS DISK IN WALL @ EAST SIDE OF LAFAYETTE ST, 35'± SOUTH OF MOST SOUTHERLY RAIL.	61.75
B-8			BASSETT ST & AGNEW RD, NW CORNER, CHISELED SQUARE ON SE CORNER OF CONCRETE PAD AT CAR WASH FACILITY, 60' WEST OF CENTERLINE OF BASSETT ST, 58' NORTH OF AGNEW RD CENTERLINE. (Reset 1972)	21.85
D-1			AGNEW RD, NORTH SIDE, 150' WEST OF LAKESHORE DR, TOP OF LETTER "C" IN WORD "CAL" ON TOP OF CATCH BASIN HOOD. (Reset 1985)	21.86
D-2			AGNEW RD & SAN TOMAS AQUINO CREEK, PK NAIL IN CHISELED SQUARE AT CENTER SOUTH SIDE OF BRIDGE AT FACE OF CURB.	25.49
E-10		BM 859	EL CAMINO REAL & BOWERS AVE, NE CORNER, SCVWD BRASS DISK IN SIDEWALK 2' BACK OF CURB, 12' EAST OF RETURN ON EL CAMINO REAL. (Reset 1993)	81.35
H-4			PRUNERIDGE AVE & KIELY BLVD, NW CORNER, TOP OF LETTER "C" IN WORD "CAL" ON TOP OF CATCH BASIN HOOD.	119.4
J-5		BM 874	KIELY BLVD & SARATOGA CREEK, SW CORNER, SCVWD BRASS DISK IN TOP OF CURB OF THE SW CORNER OF BRIDGE. (Reset 2003)	102.21
J-5A			KIELY BLVD & BENTON ST, SE CORNER, TOP OF LETTER "C" IN WORD "CAL" ON TOP OF CATCH BASIN HOOD. (Set 1985)	89.72



**65% SUBMITTAL, DATED 10/22/19
NOT FOR CONSTRUCTION**



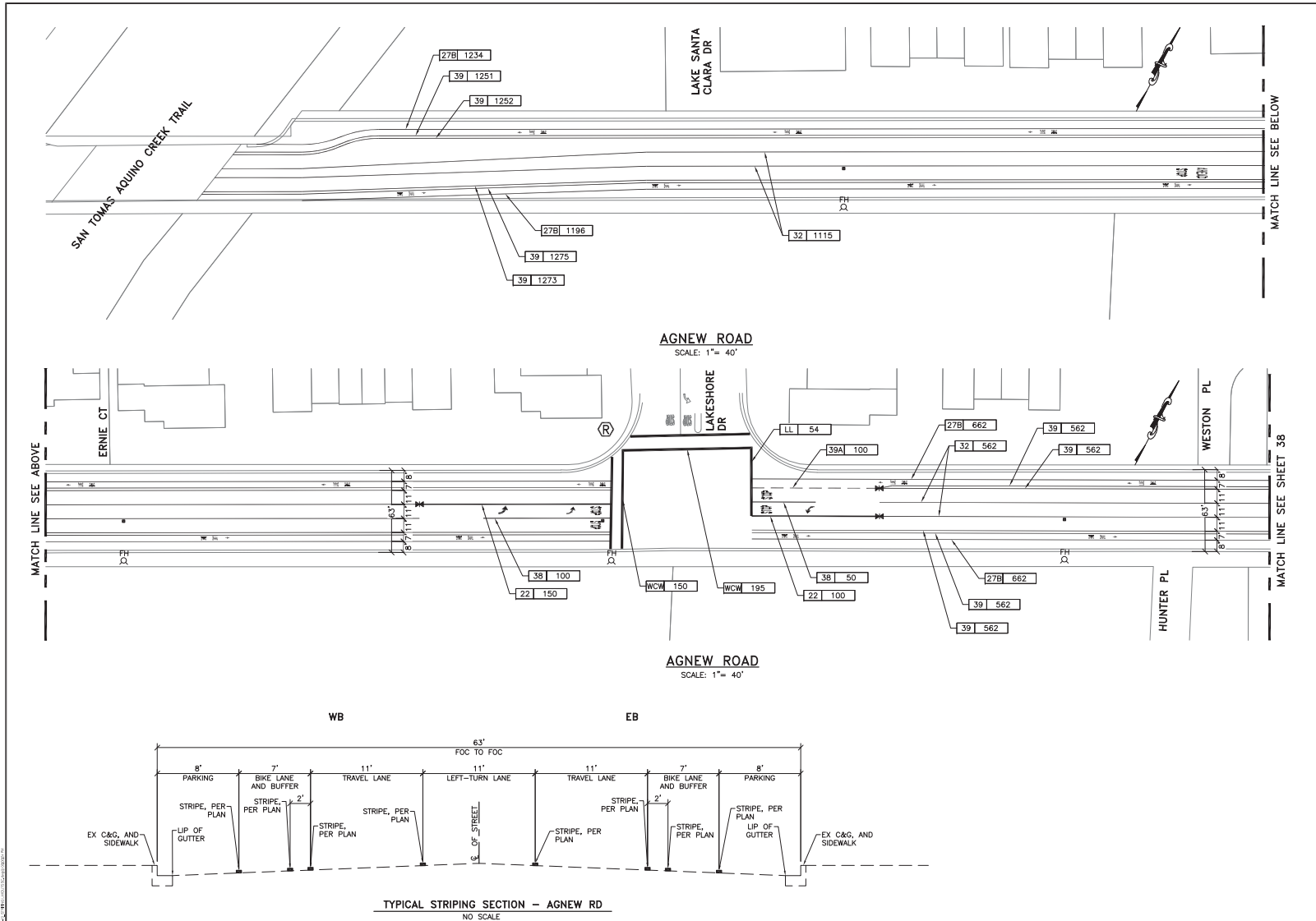
Designed by

PROJECT No. CE	XX-XX-XX
ACCOUNT No.	XXX-XXX-XXXX-XXXX
DATE	No. REVISION BY

CITY OF SANTA CLARA
ENGINEERING DEPARTMENT
**2020 ANNUAL STREET MAINTENANCE
AND REHABILITATION PROJECT**

KEY MAP AND CITY BENCHMARK

APPROVED BY	TITLE
DATE	R.C.E. No.
DESIGNED BY DS/HA	10/22
DRAWN BY EB/JL	10/22
CHECKED BY MF	10/22
AS BUILT BY -	-
TRACING No.	XXX
SHEET	2 OF XX



LEGEND AND QUANTITIES (AGNEW RD.)

SYMBOL	ITEM DESCRIPTION	QTY	UNIT
—	12" LIMIT LINE (LL)	54	LF
—	24" LIMIT LINE (LL)	73	LF
STOP	"STOP" PAVEMENT MARKING	8	EA
→	"AHEAD" PAVEMENT MARKING	1	EA
⚡	RAILROAD CROSSING PAVEMENT MARKING	3	EA
↩	TYPE IV LEFT ARROW PAVEMENT MARKING	3	EA
↩	BIKE LANE ARROW PAVEMENT MARKING	30	EA
↩	"LANE" PAVEMENT MARKING	30	EA
↩	"BIKE" PAVEMENT MARKING	30	EA
—	NO. 22 STRIPE	250	LF
—	NO. 27B STRIPE	5168	LF
—	NO. 32 STRIPE	2319	LF
—	NO. 38 STRIPE	150	LF
—	NO. 39 STRIPE	9227	LF
—	NO. 39A STRIPE	600	LF
■	BLUE FH PAVEMENT MARKER	8	EA
—	WHITE CROSSWALK (WCW)	611	SF

22 100' LENGTH CALTRANS STRIPING DETAIL NUMBER

SIGNING AND STRIPING NOTES

- INSTALL BLUE MARKERS AT EACH FIRE HYDRANT LOCATION WHETHER FIRE HYDRANTS ARE SHOWN ON THESE PLANS OR NOT.
- NEW STRIPES AND PAVEMENT MARKINGS SHALL BE THERMOPLASTIC AND REPLACE IN KIND, UNLESS OTHERWISE NOTED.
- ALL STRIPING SHALL BE CAT TRACKED BY THE CONTRACTOR AND APPROVED BY THE CITY ENGINEER PRIOR TO FINAL INSTALLATION. A MINIMUM OF 48 HOURS NOTICE IS REQUIRED.

Ⓡ RAMP UPGRADE



65% SUBMITTAL, DATED 10/22/19
NOT FOR CONSTRUCTION

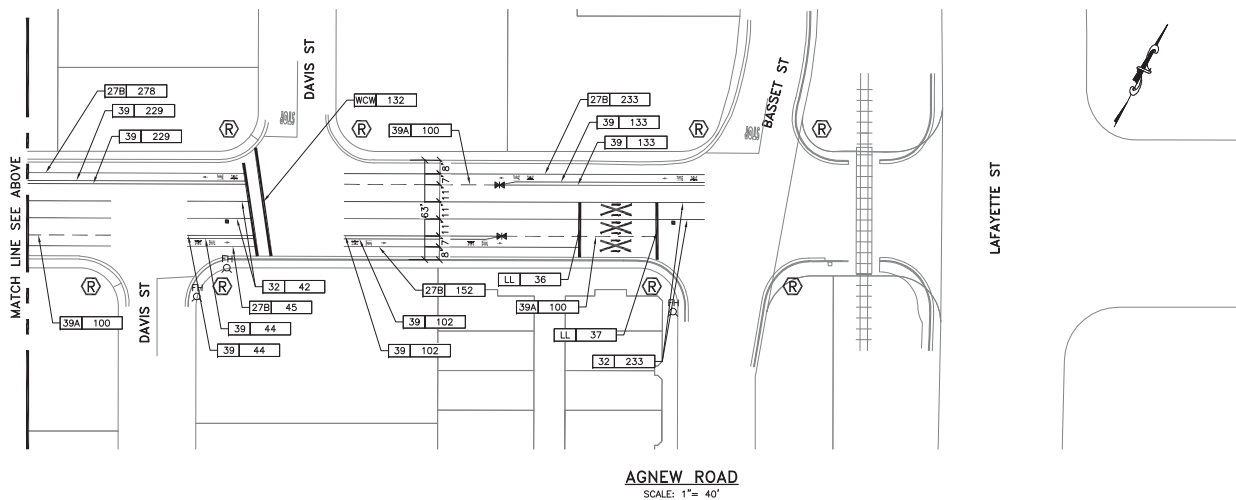


Designer Stamp

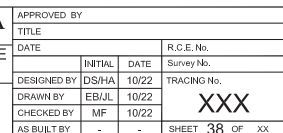
PROJECT No. CE		XX-XX-XX	
ACCOUNT No.		XXX-XXX-XXXX-XXXX	
DATE	No.	REVISION	

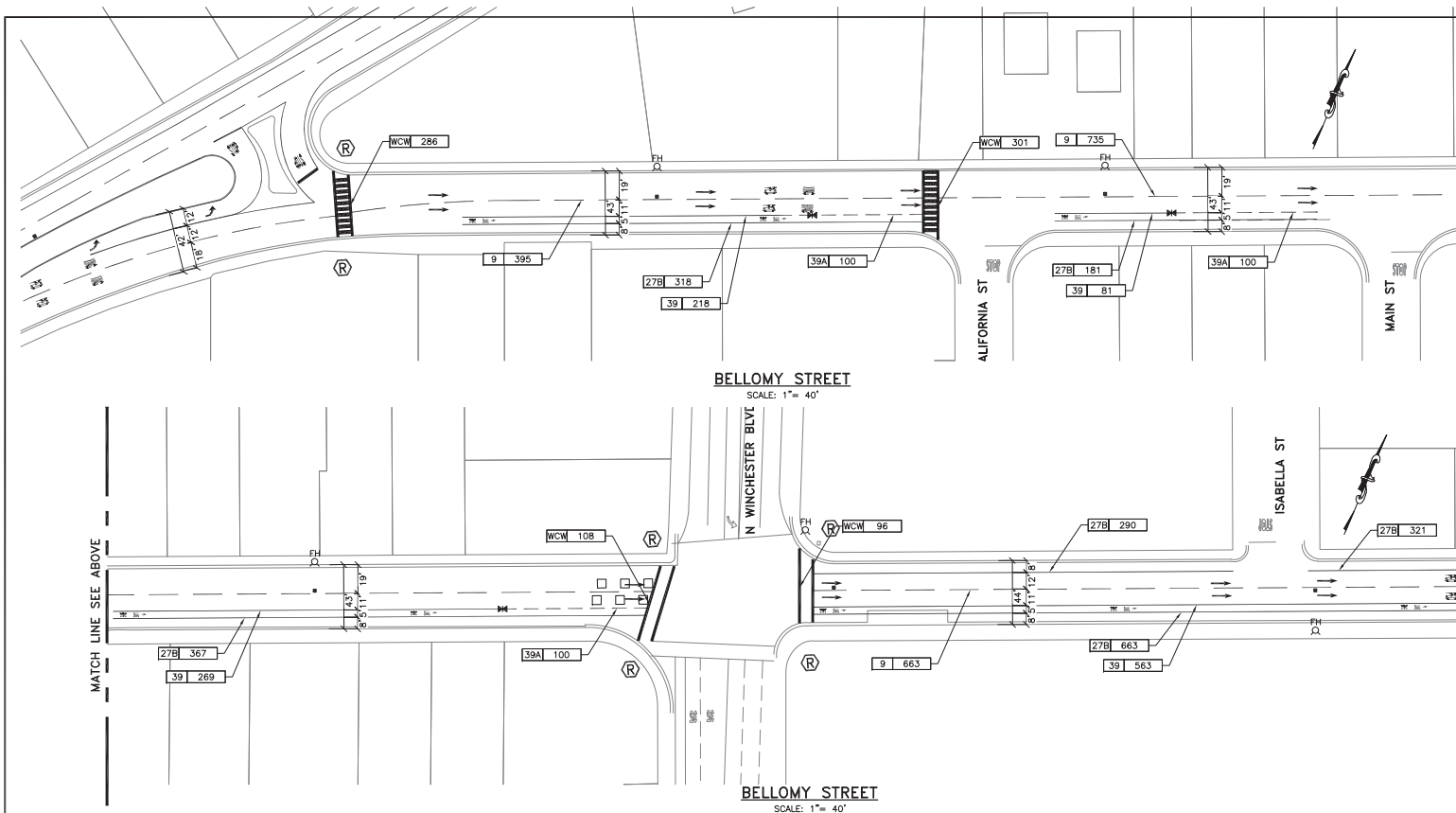
CITY OF SANTA CLARA
ENGINEERING DEPARTMENT
2020 ANNUAL STREET MAINTENANCE AND REHABILITATION PROJECT
SIGNING AND STRIPING LAYOUT LOCATIONS 1 AND 2: AGNEW RD (FROM SAN TOMAS CREEK TO LAFAYETTE ST)

APPROVED BY	TITLE
DATE	DATE
INITIAL	DATE
DESIGNED BY DS/HA	10/22
DRAWN BY EB/JL	10/22
CHECKED BY MF	10/22
AS BUILT BY -	-
R.C.E. No.	Survey No.
TRACING No.	XXX
SHEET	37 OF XX



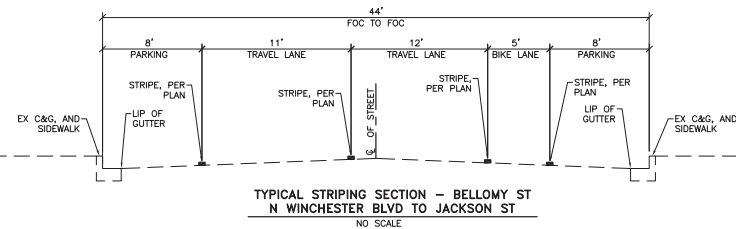
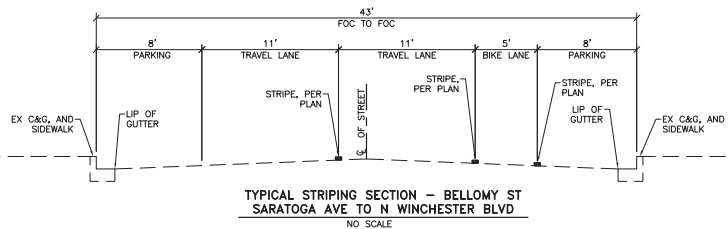
AGNEW ROAD
SCALE: 1" = 40'





LEGEND AND QUANTITIES (BELLOMY ST.)

SYMBOL	ITEM DESCRIPTION	QTY	UNIT
	"STOP" PAVEMENT MARKING	2	EA
	"PED" PAVEMENT MARKING	6	EA
	"XING" PAVEMENT MARKING	10	EA
	"SLOW" PAVEMENT MARKING	4	EA
	"SCHOOL" PAVEMENT MARKING	4	EA
	TYPE I 18' ARROW PAVEMENT MARKING	30	EA
	TYPE IV LEFT ARROW PAVEMENT MARKING	2	EA
	BIKE LANE ARROW PAVEMENT MARKING	17	EA
	"LANE" PAVEMENT MARKING	17	EA
	"BIKE" PAVEMENT MARKING	17	EA
	NO. 2 STRIPE	400	LF
	NO. 9 STRIPE	3063	LF
	NO. 22 STRIPE	400	LF
	NO. 27B STRIPE	4350	LF
	NO. 39 STRIPE	2127	LF
	NO. 39A STRIPE	700	LF
	BLUE FH PAVEMENT MARKER	11	EA
	DETECTOR LOOP	8	EA
	WHITE CROSSWALK (WCW)	1211	SF
	WHITE LADDER CROSSWALK (WCW)	874	SF
	YELLOW THERMOPLASTIC CROSSWALK (YCW) 583 (STANDARD OR LADDER)	583	SF
	LENGTH	22	100'
	CALTRANS STRIPING DETAIL NUMBER	100'	



65% SUBMITTAL, DATED 10/22/19
NOT FOR CONSTRUCTION

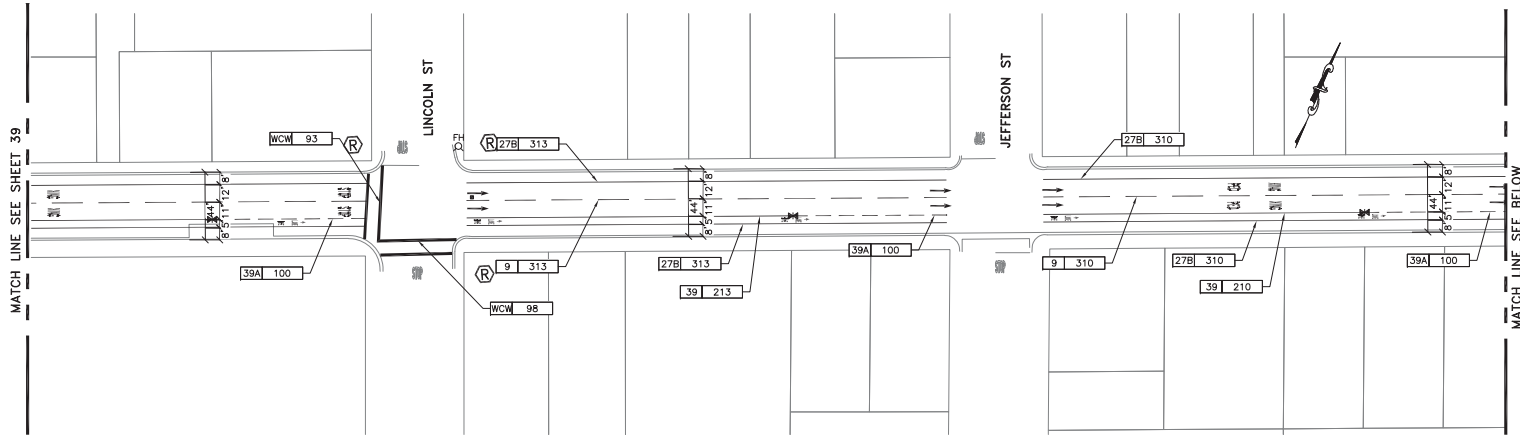


Designer Stamp

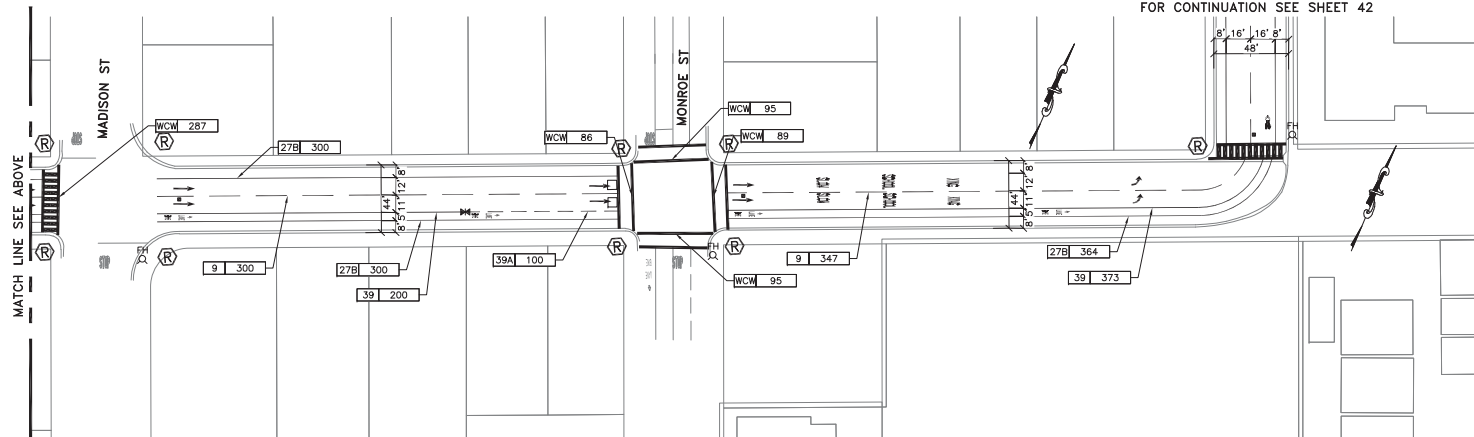
PROJECT No. CE	XX-XX-XX
ACCOUNT No.	XXX-XXX-XXXX-XXXX
DATE	No. REVISION BY

CITY OF SANTA CLARA
ENGINEERING DEPARTMENT
2020 ANNUAL STREET MAINTENANCE AND REHABILITATION PROJECT
SIGNING AND STRIPING LAYOUT
LOCATION 3: BELLOMY ST
(FROM SARATOGA AVE TO JACKSON AVE)

APPROVED BY	TITLE
DATE	DATE
INITIAL	DATE
DESIGNED BY DS/HA	10/22
DRAWN BY EB/JL	10/22
CHECKED BY MF	10/22
AS BUILT BY	-
R.C.E. No.	Survey No.
TRACING No.	XXX
SHEET	39 OF XX



BELLOMY STREET
SCALE: 1"= 40'



BELLOMY STREET
SCALE: 1"= 40'

Prepared by:



Designer/Checker:

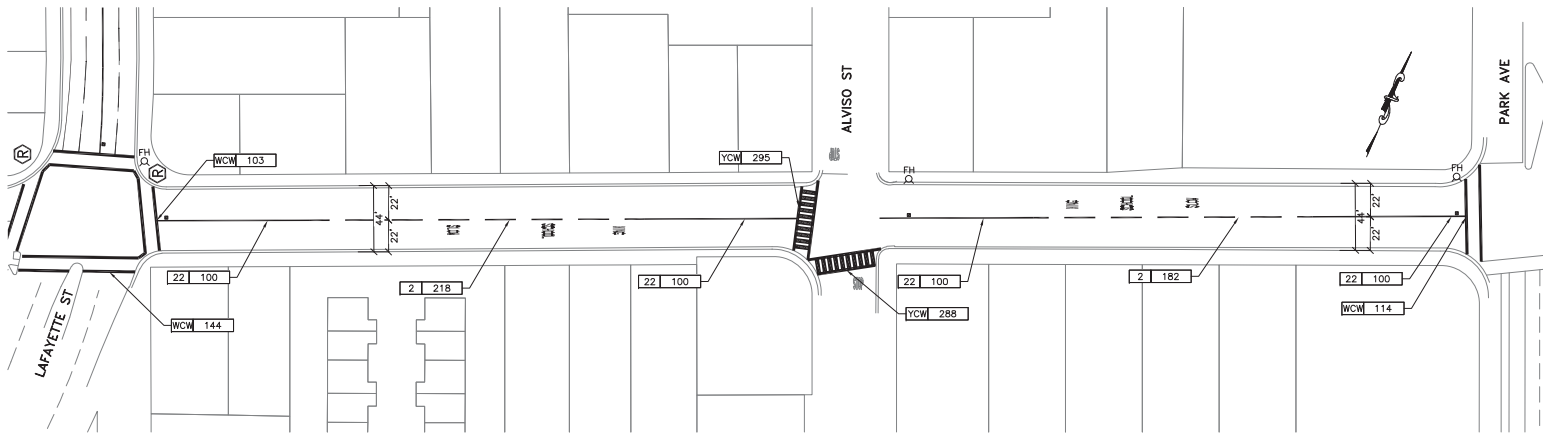
PROJECT No. CE		XX-XX-XX	
ACCOUNT No.		XXX-XXX-XXXX-XXXX	
DATE	No.	REVISION	BY

CITY OF SANTA CLARA
ENGINEERING DEPARTMENT
**2020 ANNUAL STREET MAINTENANCE
AND REHABILITATION PROJECT**
SIGNING AND STRIPING LAYOUT
LOCATION 3: BELLOMY ST
(FROM SARATOGA AVE TO JACKSON AVE)

APPROVED BY			
TITLE		R.C.E. No.	
DATE	INITIAL	DATE	Survey No.
DESIGNED BY	DS/HA	10/22	TRACING No.
DRAWN BY	EB/JL	10/22	XXX
CHECKED BY	MF	10/22	
AS BUILT BY	-	-	SHEET 40 OF XX



**65% SUBMITTAL, DATED 10/22/19
NOT FOR CONSTRUCTION**



BELLOMY STREET
SCALE: 1"= 40'



65% SUBMITTAL, DATED 10/22/19
NOT FOR CONSTRUCTION



Designer Stamp

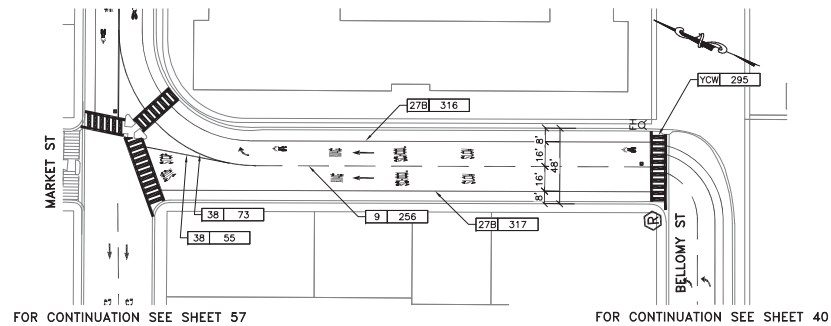
PROJECT No. CE		XX-XX-XX	
ACCOUNT No.		XXX-XXX-XXXXX-XXXX	
DATE	No.	REVISION	BY

CITY OF SANTA CLARA
ENGINEERING DEPARTMENT

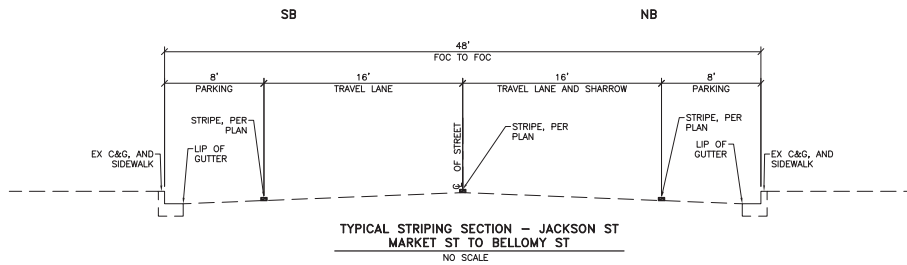
2020 ANNUAL STREET MAINTENANCE AND REHABILITATION PROJECT

SIGNING AND STRIPING LAYOUT
LOCATION 4: BELLOMY ST
(FROM LAFAYETTE ST TO PARK AVE)

APPROVED BY			
TITLE			
DATE	INITIAL	DATE	R.C.E. No.
DESIGNED BY	DS/HA	10/22	Survey No.
DRAWN BY	EB/JL	10/22	TRACING No.
CHECKED BY	MF	10/22	XXX
AS BUILT BY	-	-	
SHEET			41 OF XX



JACKSON STREET
SCALE: 1"= 40'



LEGEND AND QUANTITIES (JACKSON ST.)

SYMBOL	ITEM DESCRIPTION	QTY	UNIT
STOP	"STOP" PAVEMENT MARKING	2	EA
XING	"XING" PAVEMENT MARKING	2	EA
SLOW	"SLOW" PAVEMENT MARKING	2	EA
SCHOOL	"SCHOOL" PAVEMENT MARKING	2	EA
↑	TYPE I 18" ARROW PAVEMENT MARKING	2	EA
↖	TYPE IV LEFT ARROW PAVEMENT MARKING	1	EA
SHARROW	SHARROW PAVEMENT MARKING	2	EA
---	NO. 9 STRIPE	256	LF
---	NO. 27B STRIPE	63	LF
---	NO. 38 STRIPE	128	LF
■	BLUE FH PAVEMENT MARKER	1	EA
	YELLOW THERMOPLASTIC CROSSWALK (YCW) 295	5	EA
22 100'	LENGTH		
	CALTRANS STRIPING DETAIL NUMBER		



65% SUBMITTAL, DATED 10/22/19
NOT FOR CONSTRUCTION



Designed by

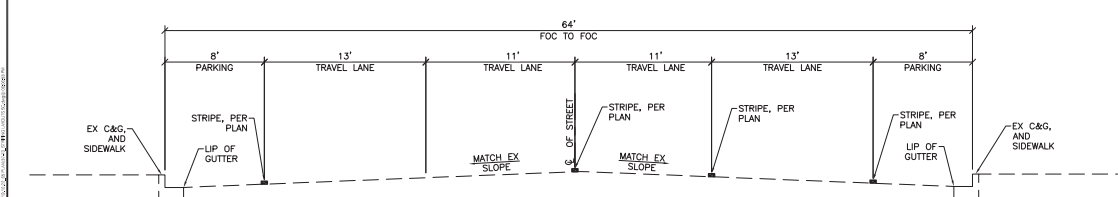
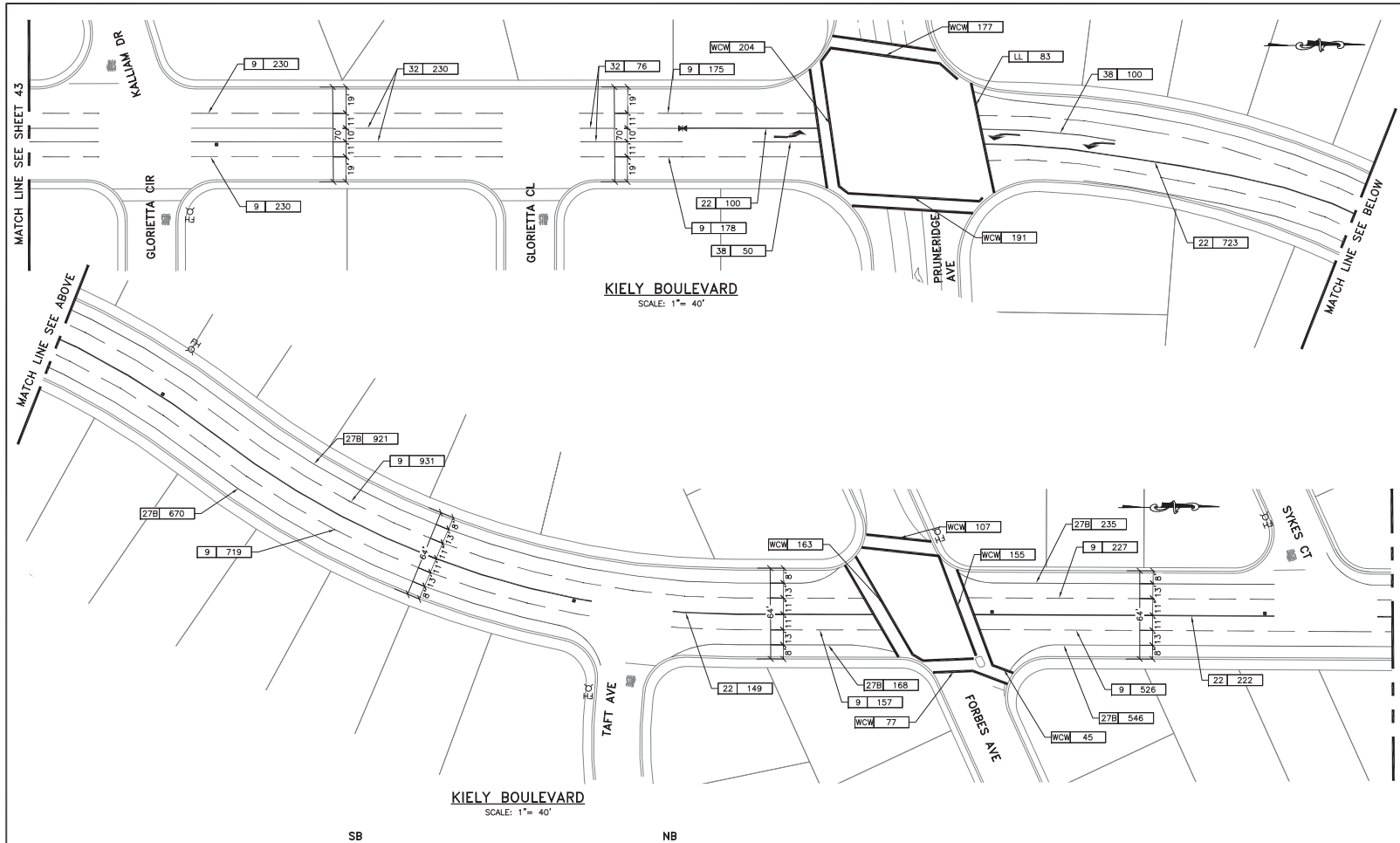
PROJECT No. CE		XX-XX-XX	
ACCOUNT No.		XXX-XXX-XXXX-XXXX	
DATE	No.	REVISION	BY

CITY OF SANTA CLARA
ENGINEERING DEPARTMENT
2020 ANNUAL STREET MAINTENANCE AND REHABILITATION PROJECT
SIGNING AND STRIPING LAYOUT
LOCATION 5: JACKSON ST
(FROM MARKET ST TO BElLOMY ST)

APPROVED BY			
TITLE			
DATE	INITIAL	DATE	R.C.E. No.
	DS/HA	10/22	Survey No.
DESIGNED BY	EB/JL	10/22	TRACING No.
DRAWN BY	MF	10/22	
CHECKED BY			
AS BUILT BY	-	-	

XXX

SHEET 42 OF XX



TYPICAL STRIPING SECTION - KIELY BLVD
FORBES AVE TO BARCELLS AVE
NO SCALE

65% SUBMITTAL, DATED 10/22/19
NOT FOR CONSTRUCTION



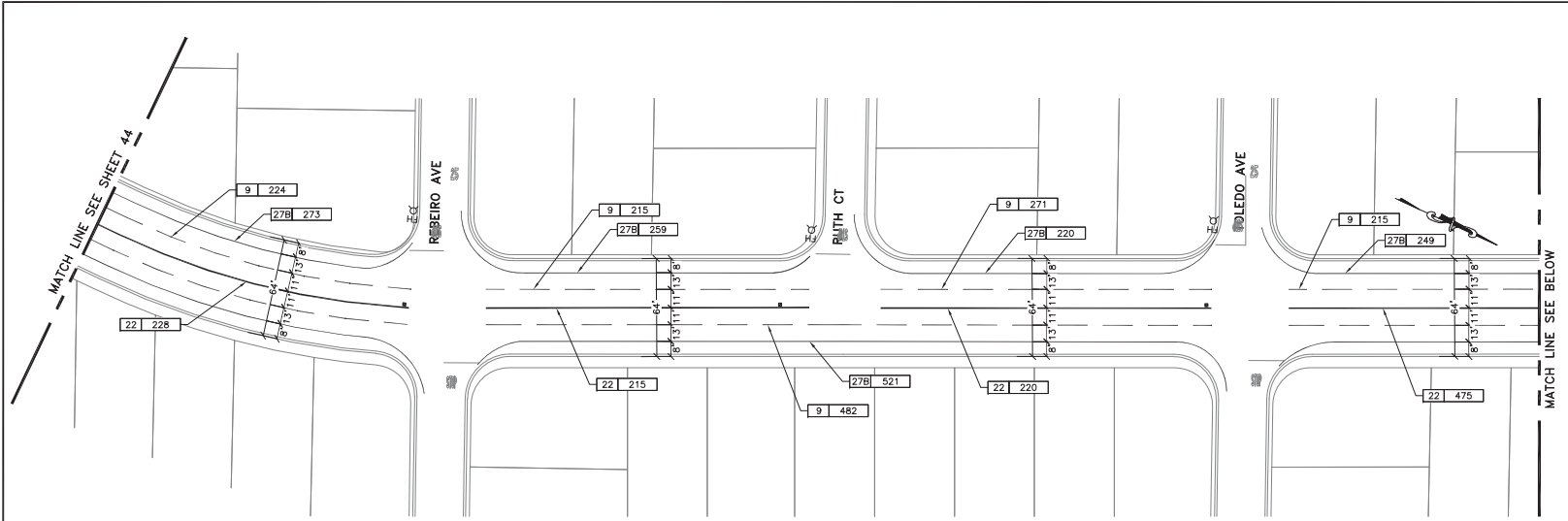
Designer Stamp

PROJECT No. CE		XX-XX-XX	
ACCOUNT No.		XXX-XXX-XXXX-XXXX	
DATE	No.	REVISION	BY

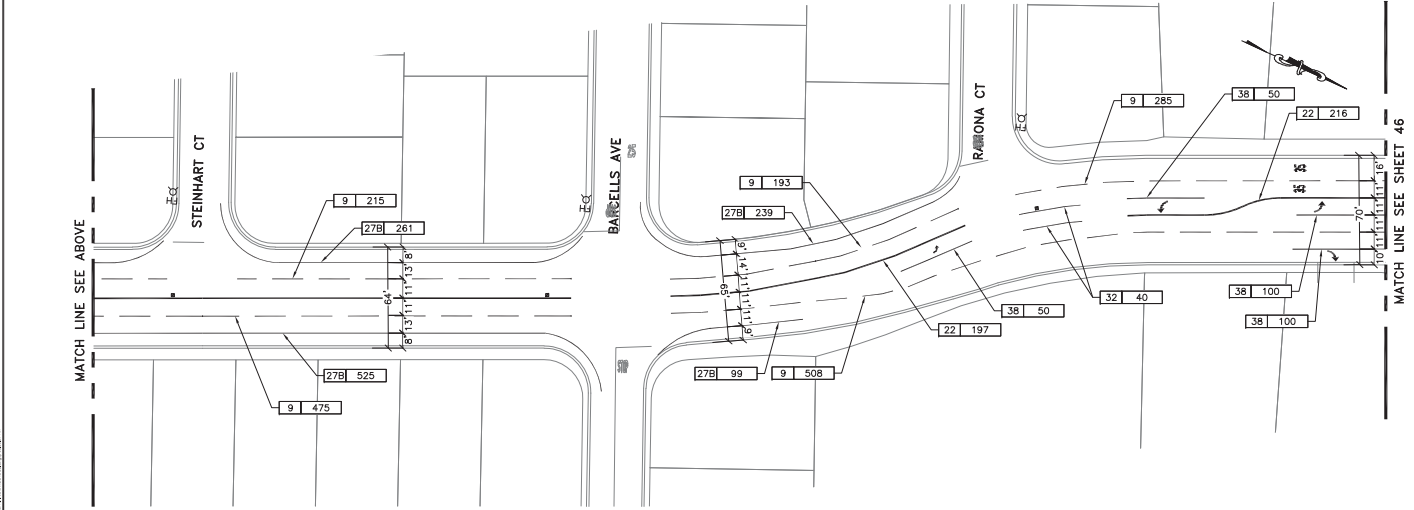
CITY OF SANTA CLARA
ENGINEERING DEPARTMENT
**2020 ANNUAL STREET MAINTENANCE
AND REHABILITATION PROJECT**
SIGNING AND STRIPING LAYOUT
LOCATIONS 6 AND 7: KIELY BLVD
(FROM STEVENS CREEK BLVD TO EL CAMINO REAL)

APPROVED BY			
TITLE		R.C.E. No.	
DATE	INITIAL	DATE	Survey No.
DESIGNED BY	DS/HA	10/22	TRACING No.
DRAWN BY	EB/JL	10/22	XXX
CHECKED BY	MF	10/22	
AS BUILT BY	-	-	SHEET 44 OF XX





KIELY BOULEVARD
SCALE: 1"= 40'



KIELY BOULEVARD
SCALE: 1"= 40'



65% SUBMITTAL, DATED 10/22/19
NOT FOR CONSTRUCTION

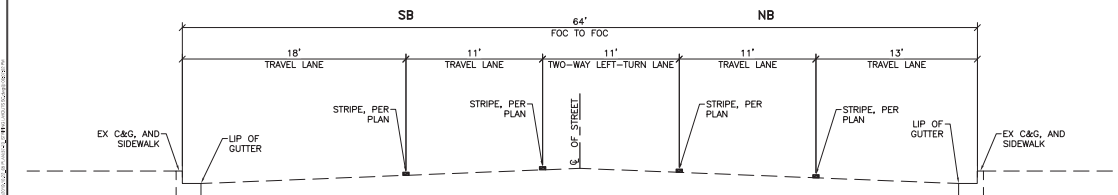
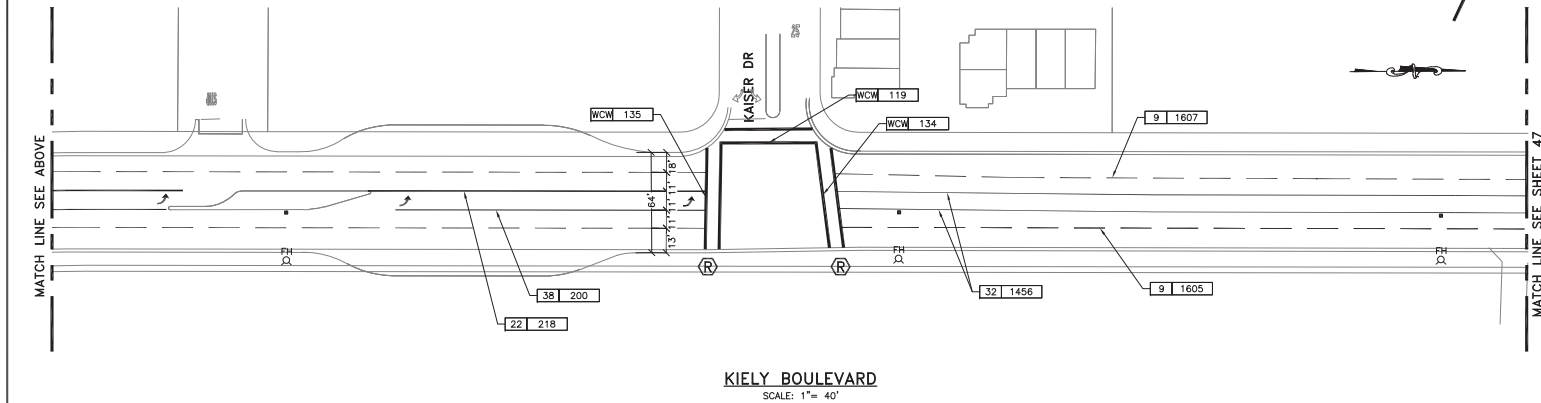
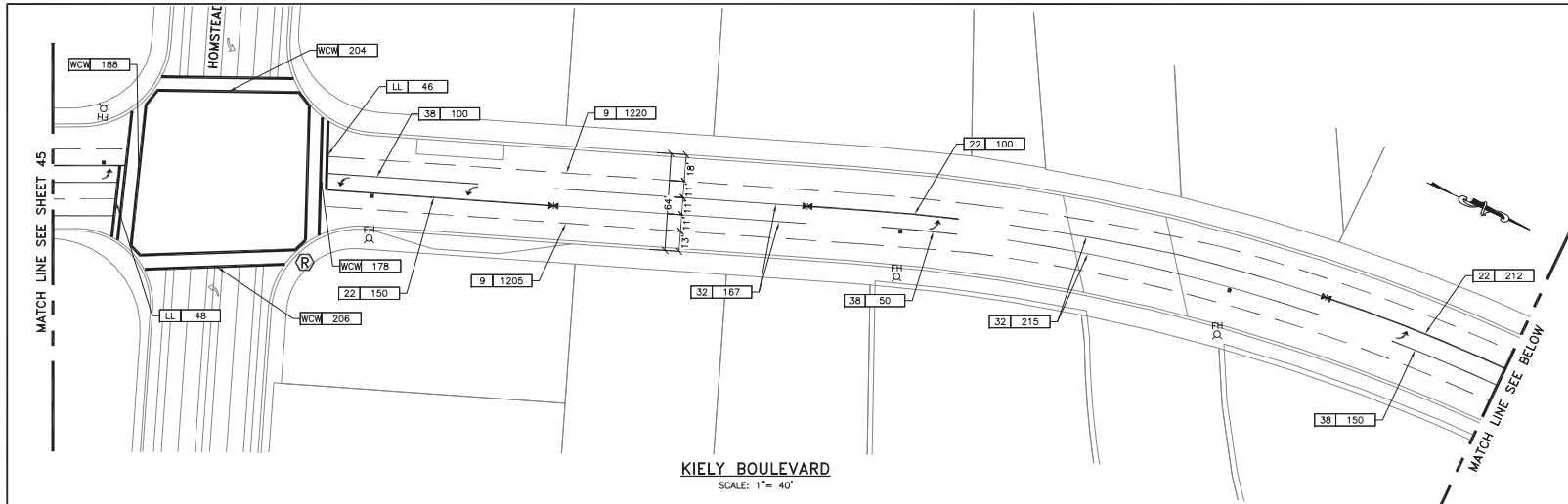


Designer Stamp

PROJECT No. CE		XX-XX-XX	
ACCOUNT No.		XXX-XXX-XXXX-XXXX	
DATE	No.	REVISION	BY

CITY OF SANTA CLARA
ENGINEERING DEPARTMENT
2020 ANNUAL STREET MAINTENANCE AND REHABILITATION PROJECT
SIGNING AND STRIPING LAYOUT
LOCATIONS 6 AND 7: KIELY BLVD
(FROM STEVENS CREEK BLVD TO EL CAMINO REAL)

APPROVED BY			
TITLE		R.C.E. No.	
DATE	INITIAL	DATE	Survey No.
DESIGNED BY	DS/HA	10/22	TRACING No.
DRAWN BY	EB/JL	10/22	XXX
CHECKED BY	MF	10/22	
AS BUILT BY	-	-	SHEET 45 OF XX



TYPICAL STRIPING SECTION - KIELY BLVD
HOMESTEAD RD TO BENTON ST
NO SCALE



65% SUBMITTAL, DATED 10/22/19
NOT FOR CONSTRUCTION

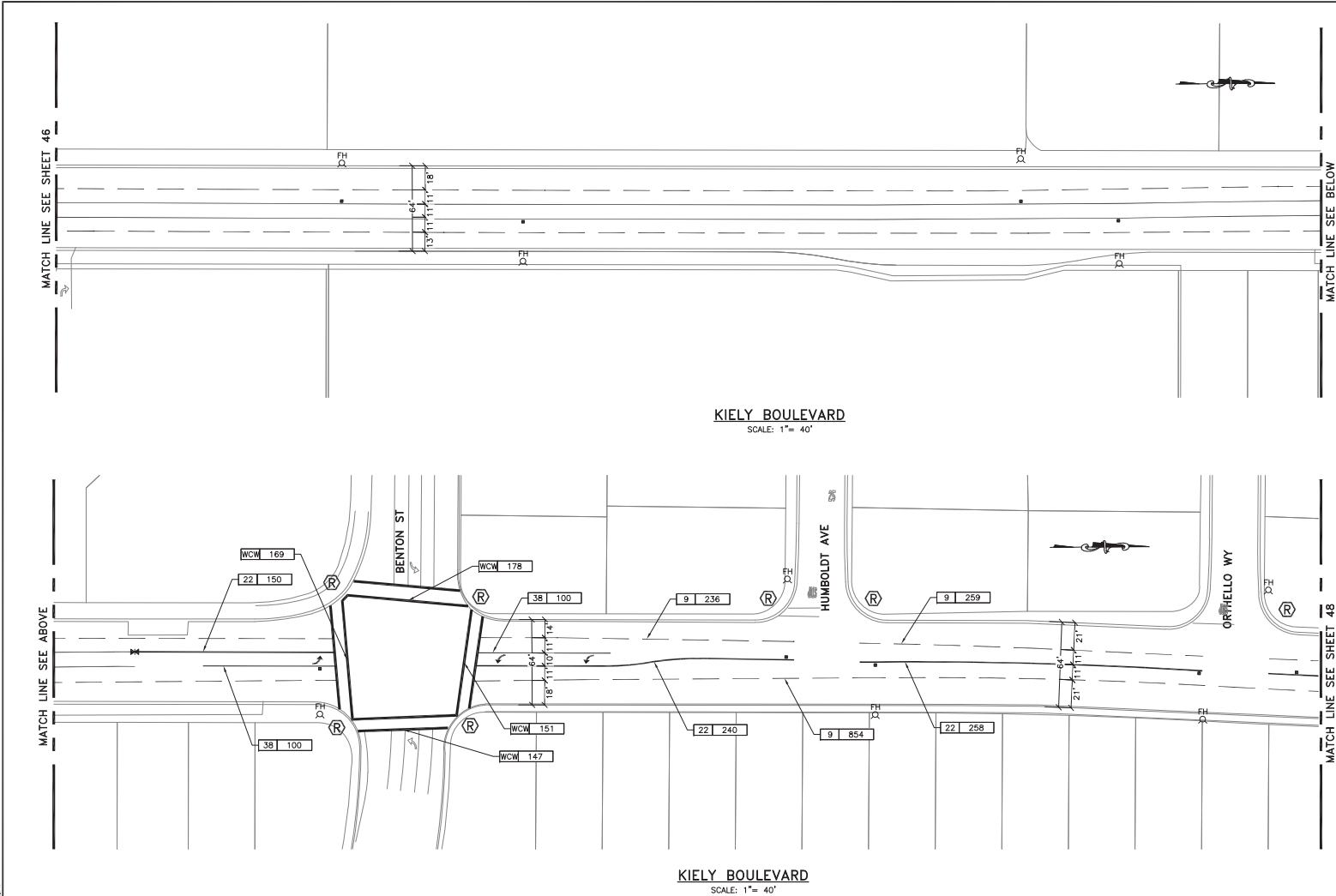


Designer Stamp

PROJECT No. CE		XX-XX-XX	
ACCOUNT No.		XXX-XXX-XXXXX-XXXX	
DATE	No.	REVISION	BY

CITY OF SANTA CLARA			
ENGINEERING DEPARTMENT			
2020 ANNUAL STREET MAINTENANCE AND REHABILITATION PROJECT			
SIGNING AND STRIPING LAYOUT			
LOCATIONS 6 AND 7: KIELY BLVD			
(FROM STEVENS CREEK BLVD TO EL CAMINO REAL)			

APPROVED BY			
TITLE		R.C.E. No.	
DATE	INITIAL	DATE	Survey No.
DESIGNED BY	DS/HA	10/22	TRACING No.
DRAWN BY	EB/JL	10/22	XXX
CHECKED BY	MF	10/22	
AS BUILT BY	-	-	



65% SUBMITTAL, DATED 10/22/19
NOT FOR CONSTRUCTION

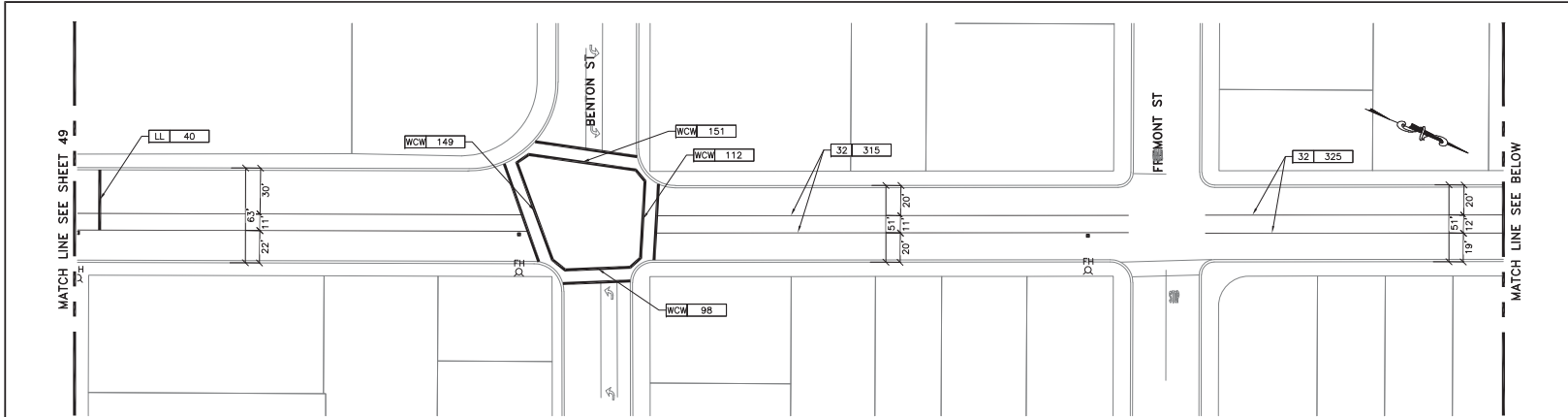


Designer Stamp

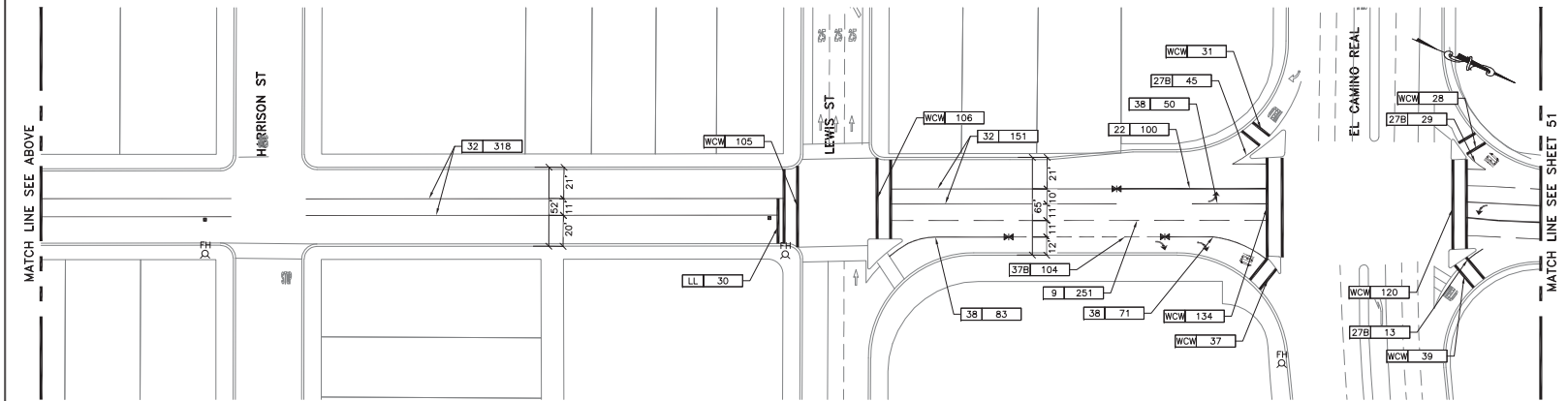
PROJECT No. CE		XX-XX-XX	
ACCOUNT No.		XXX-XXX-XXXX-XXXX	
DATE	No.	REVISION	BY

CITY OF SANTA CLARA
 ENGINEERING DEPARTMENT
2020 ANNUAL STREET MAINTENANCE AND REHABILITATION PROJECT
 SIGNING AND STRIPING LAYOUT
 LOCATIONS 6 AND 7: KIELY BLVD
 (FROM STEVENS CREEK BLVD TO EL CAMINO REAL)

APPROVED BY			
TITLE			
DATE	INITIAL	DATE	R.C.E. No.
DESIGNED BY	DS/HA	10/22	Survey No.
DRAWN BY	EB/JL	10/22	TRACING No.
CHECKED BY	MF	10/22	XXX
AS BUILT BY	-	-	
SHEET 47 OF XX			



LAFAYETTE STREET
SCALE: 1"= 40'



LAFAYETTE STREET
SCALE: 1"= 40'



**65% SUBMITTAL, DATED 10/22/19
NOT FOR CONSTRUCTION**

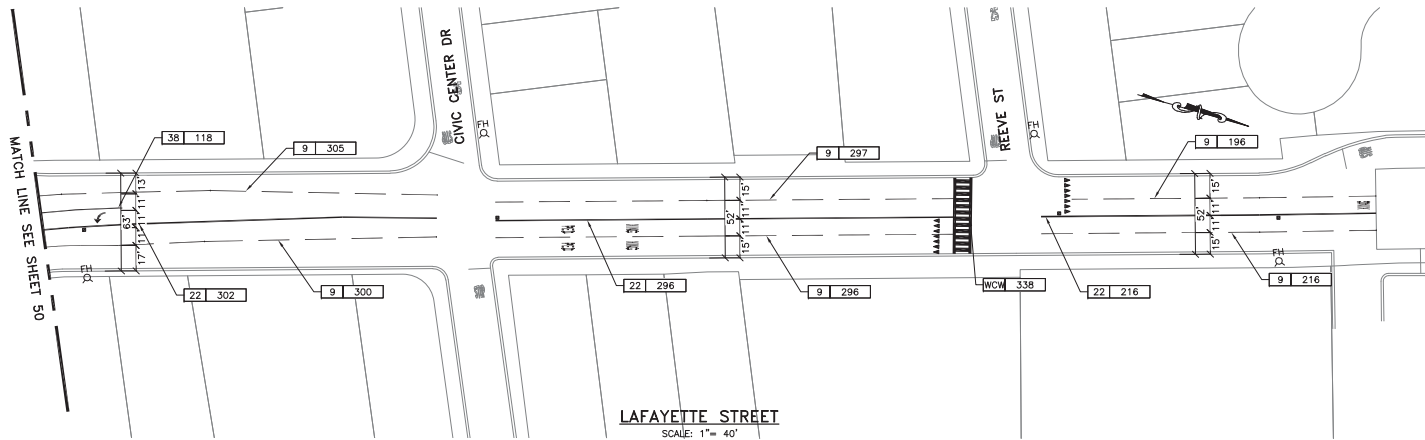


Designer Stamp

PROJECT No. CE		XX-XX-XX	
ACCOUNT No.		XXX-XXX-XXXX-XXXX	
DATE	No.	REVISION	BY

CITY OF SANTA CLARA
ENGINEERING DEPARTMENT
**2020 ANNUAL STREET MAINTENANCE
AND REHABILITATION PROJECT**
SIGNING AND STRIPING LAYOUT
LOCATIONS 8 AND 9: LAFAYETTE ST
(FROM BELLOMY ST TO 230' N. OF REEVE ST)

APPROVED BY			
TITLE		R.C.E. No.	
DATE	INITIAL	DATE	Survey No.
DESIGNED BY	DS/HA	10/22	TRACING No.
DRAWN BY	EB/JL	10/22	XXX
CHECKED BY	MF	10/22	
AS BUILT BY	-	-	SHEET 50 OF XX



LAFAYETTE STREET
SCALE: 1" = 40'

Prepared by:



Designer Stamp:

PROJECT No. CE		XX-XX-XX	
ACCOUNT No.		XXX-XXX-XXXXX-XXXX	
DATE	No.	REVISION	BY

CITY OF SANTA CLARA			
ENGINEERING DEPARTMENT			
2020 ANNUAL STREET MAINTENANCE AND REHABILITATION PROJECT			
SIGNING AND STRIPING LAYOUT			
LOCATIONS 8 AND 9: LAFAYETTE ST			
(FROM BELLOMY ST TO 230' N. OF REEVE ST)			

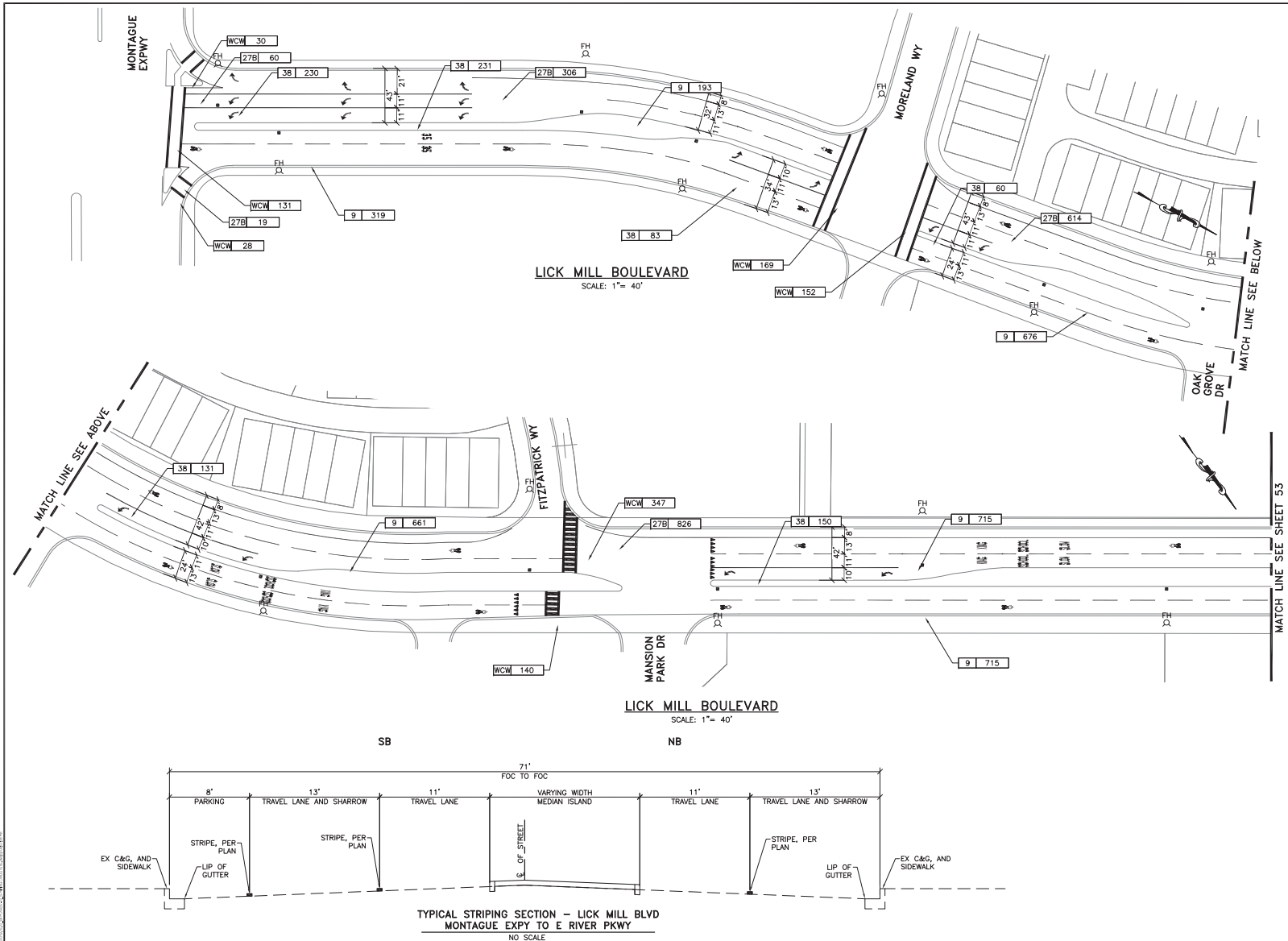
APPROVED BY			
TITLE			
DATE	INITIAL	DATE	R.C.E. No.
			Survey No.
DESIGNED BY	DS/HA	10/22	TRACING No.
DRAWN BY	EB/JL	10/22	XXX
CHECKED BY	MF	10/22	
AS BUILT BY	-	-	SHEET 51 OF XX



Know what's below.
Call before you dig.

65% SUBMITTAL, DATED 10/22/19
NOT FOR CONSTRUCTION

C:\Users\j\Documents\2020 Annual Street Maintenance and Rehabilitation Project\2020 Annual Street Maintenance and Rehabilitation Project.dwg, 10/22/2019 10:22:19 AM



LEGEND AND QUANTITIES (LICK MILL BLVD.)			
SYMBOL	ITEM DESCRIPTION	QTY	UNIT
----	24" LIMIT LINE (LL)	46	LF
	YIELD LINE PAVEMENT MARKING	108	SE
	"SIGNAL" PAVEMENT MARKING	2	EA
	"AHEAD" PAVEMENT MARKING	2	EA
	"FED" PAVEMENT MARKING	4	EA
	"XING" PAVEMENT MARKING	12	EA
	"SLOW" PAVEMENT MARKING	8	EA
	"SCHOOL" PAVEMENT MARKING	8	EA
	RAILROAD CROSSING PAVEMENT MARKING	2	EA
	"35" PAVEMENT MARKING	2	EA
	TYPE II LEFT ARROW PAVEMENT MARKING	2	EA
	TYPE IV LEFT ARROW PAVEMENT MARKING	46	EA
	TYPE IV RIGHT ARROW PAVEMENT MARKING	5	EA
	SHARROW PAVEMENT MARKING	55	EA
----	NO. 9 STRIPE	16941	LF
----	NO. 27B STRIPE	13248	LF
----	NO. 38 STRIPE	2953	LF
	BLUE FH PAVEMENT MARKER	42	EA
	WHITE CROSSWALK (WCW)	1189	SE
	WHITE LADDER CROSSWALK (WCW)	1478	SE



65% SUBMITTAL, DATED 10/22/19
NOT FOR CONSTRUCTION

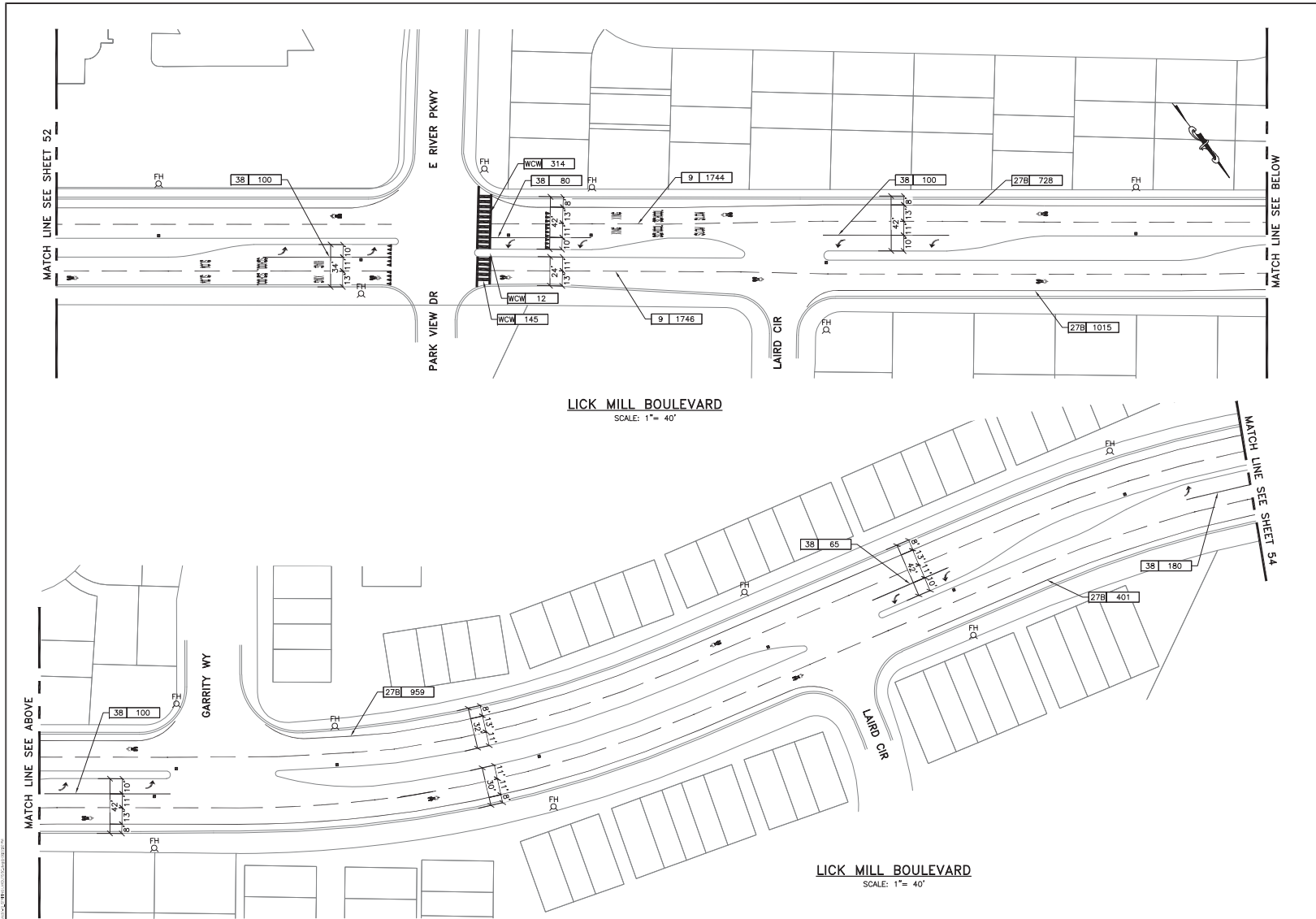


Designer Stamp

PROJECT No. CE		XX-XX-XX	
ACCOUNT No.		XXX-XXX-XXXX-XXXX	
DATE	No.	REVISION	

CITY OF SANTA CLARA	
ENGINEERING DEPARTMENT	
2020 ANNUAL STREET MAINTENANCE AND REHABILITATION PROJECT	
SIGNING AND STRIPING LAYOUT	
LOCATION 10: LICK MILL BLVD	
(FROM MONTAGUE EXPY TO TASMAN DR)	

APPROVED BY				
TITLE				
DATE			R.C.E. No.	
	INITIAL	DATE	Survey No.	
DESIGNED BY	DS/HA	10/22	TRACING No.	
DRAWN BY	EB/JL	10/22	XXX	
CHECKED BY	MF	10/22		
AS BUILT BY	-	-		
			SHEET 52 OF XX	



65% SUBMITTAL, DATED 10/22/19
NOT FOR CONSTRUCTION

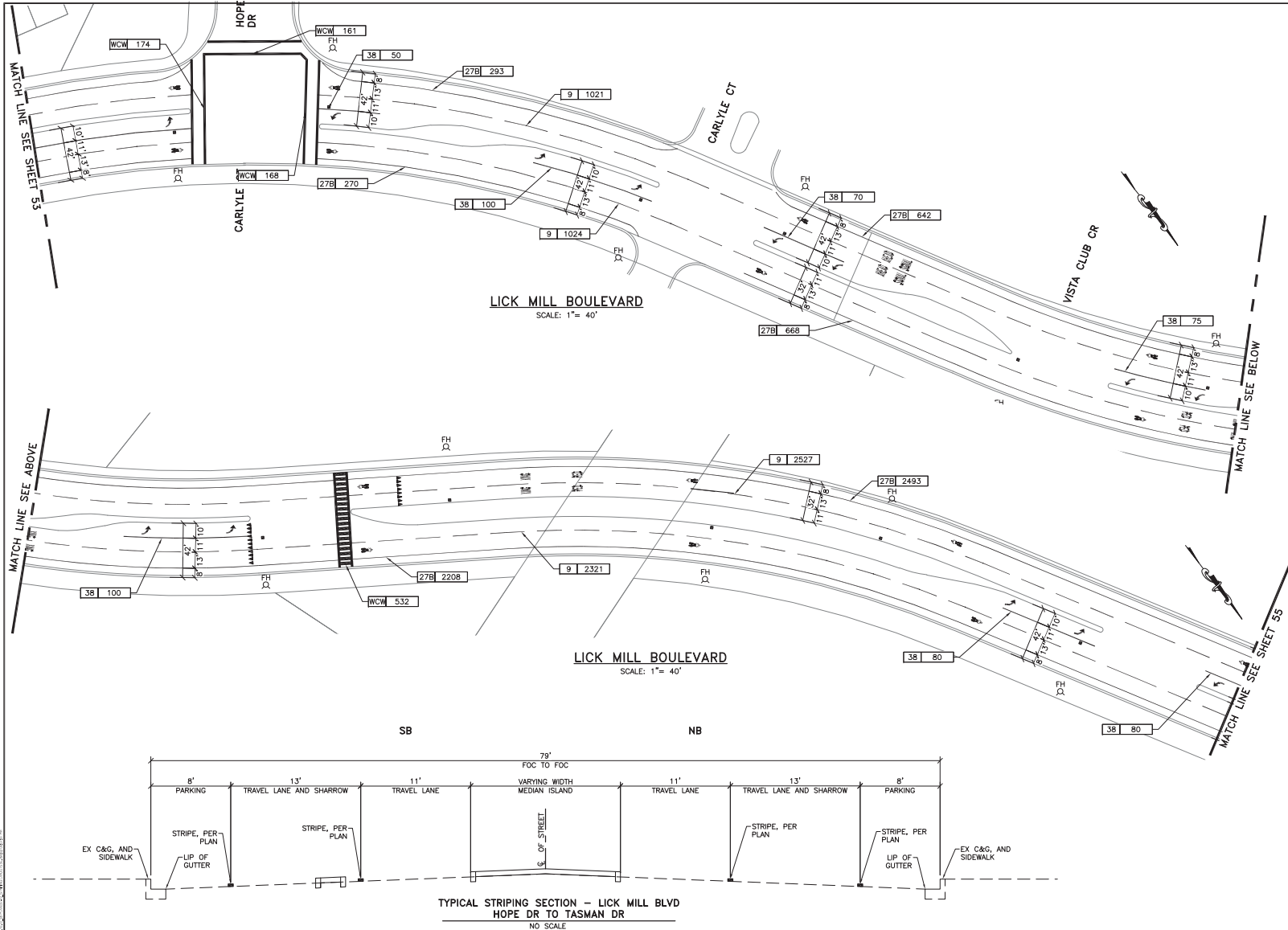


Designer Stamp

PROJECT No. CE		XX-XX-XX	
ACCOUNT No.		XXX-XXX-XXXX-XXXX	
DATE	No.	REVISION	BY

CITY OF SANTA CLARA
ENGINEERING DEPARTMENT
2020 ANNUAL STREET MAINTENANCE AND REHABILITATION PROJECT
SIGNING AND STRIPING LAYOUT
LOCATION 10: LICK MILL BLVD
(FROM MONTAGUE EXPWY TO TASMAN DR)

APPROVED BY			
TITLE		R.C.E. No.	
DATE	INITIAL	DATE	Survey No.
DESIGNED BY	DS/HA	10/22	TRACING No.
DRAWN BY	EB/JL	10/22	XXX
CHECKED BY	MF	10/22	
AS BUILT BY	-	-	SHEET 53 OF XX



**65% SUBMITTAL, DATED 10/22/19
NOT FOR CONSTRUCTION**



Designer Stamp

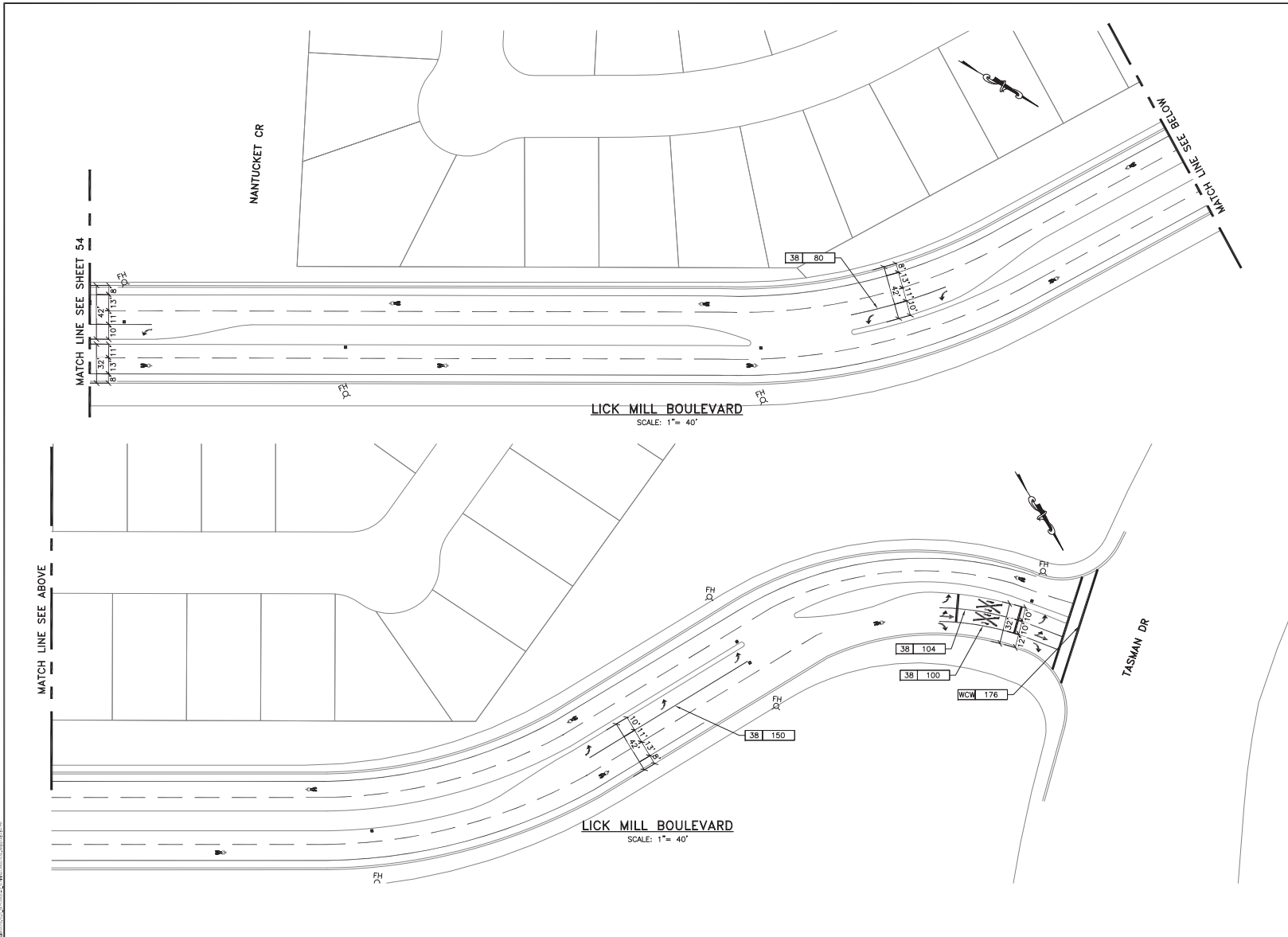
PROJECT No. CE		XX-XX-XX	
ACCOUNT No.		XXX-XXX-XXXX-XXXX	
DATE	No.	REVISION	B

CITY OF SANTA CLARA
ENGINEERING DEPARTMENT
**2020 ANNUAL STREET MAINTENANCE
AND REHABILITATION PROJECT**
SIGNING AND STRIPING LAYOUT
LOCATION 10: LICK MILL BLVD
(FROM MONTAGUE EXPWY TO TASMAN DR)

APPROVED BY	TITLE	DATE	INITIAL	DATE	R.C.E. No.	Survey No.
DESIGNED BY	DS/HA	10/22				
DRAWN BY	EB/JL	10/22				
CHECKED BY	MF	10/22				
AS BUILT BY	-	-				

XXX

SHEET 54 OF XX



65% SUBMITTAL, DATED 10/22/19
NOT FOR CONSTRUCTION

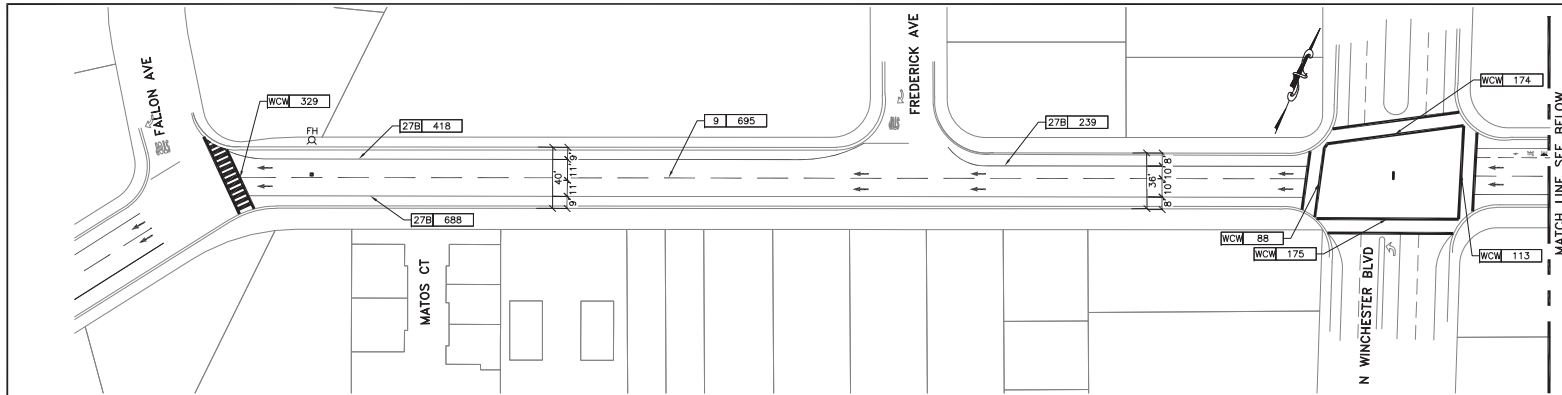


Designed by:

PROJECT No. CE		XX-XX-XX	
ACCOUNT No.		XXX-XXX-XXXXX-XXXX	
DATE	No.	REVISION	BY

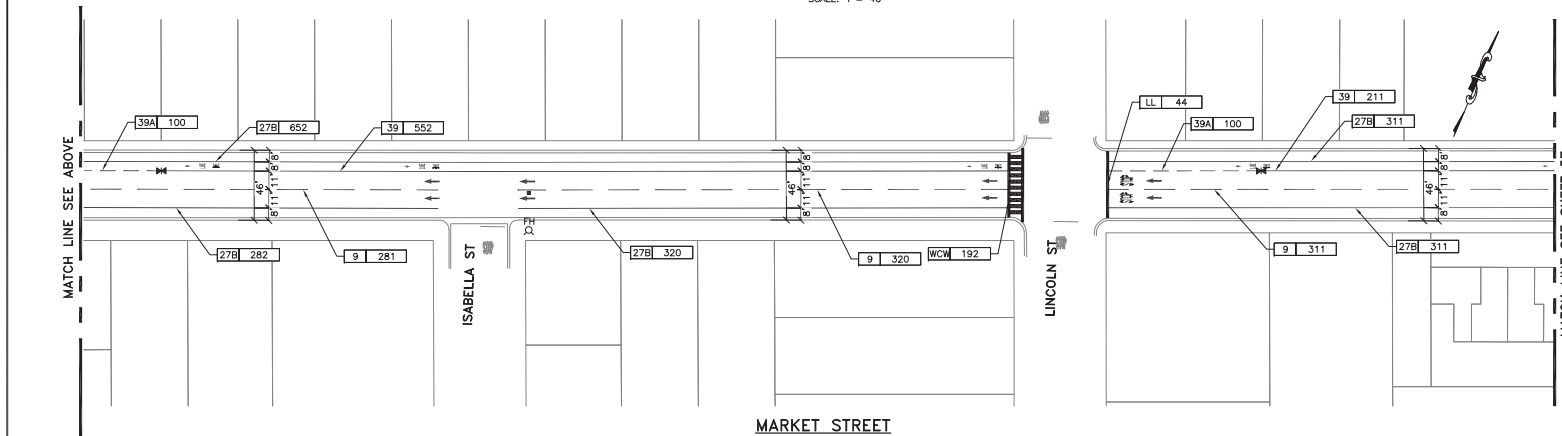
CITY OF SANTA CLARA
 ENGINEERING DEPARTMENT
2020 ANNUAL STREET MAINTENANCE AND REHABILITATION PROJECT
 SIGNING AND STRIPING LAYOUT
 LOCATION 10: LICK MILL BLVD
 (FROM MONTAGUE EXPWY TO TASMAN DR)

APPROVED BY			
TITLE		R.C.E. No.	
DATE	INITIAL	DATE	Survey No.
DESIGNED BY	DS/HA	10/22	TRACING No.
DRAWN BY	EB/JL	10/22	XXX
CHECKED BY	MF	10/22	
AS BUILT BY	-	-	SHEET 55 OF XX

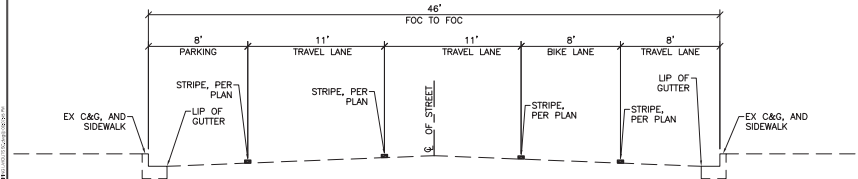


FOR CONTINUATION SEE SHEET 66

MARKET STREET
SCALE: 1"= 40'



MARKET STREET
SCALE: 1"= 40'



TYPICAL STRIPING SECTION - MARKET ST
N WINCHESTER BLVD TO MONROE ST
NO SCALE

LEGEND AND QUANTITIES (MARKET ST.)

SYMBOL	ITEM DESCRIPTION	QTY	UNIT
—	12" LIMIT LINE (LL)	44	LF
STOP	"STOP" PAVEMENT MARKING	2	EA
X	"XING" PAVEMENT MARKING	5	EA
S	"SLOW" PAVEMENT MARKING	5	EA
SCH	"SCHOOL" PAVEMENT MARKING	5	EA
25	"25" PAVEMENT MARKING	2	EA
↑	TYPE I 10' ARROW PAVEMENT MARKING	32	EA
+	BIKE LANE ARROW PAVEMENT MARKING	10	EA
L	"LANE" PAVEMENT MARKING	10	EA
B	"BIKE" PAVEMENT MARKING	10	EA
SH	SHARROW PAVEMENT MARKING	12	EA
---	NO. 9 STRIPE	2547	LF
---	NO. 22 STRIPE	918	LF
---	NO. 27B STRIPE	6357	LF
---	NO. 38 STRIPE	56	LF
---	NO. 39 STRIPE	1186	LF
---	NO. 39A STRIPE	400	LF
■	BLUE FH PAVEMENT MARKER	5	EA
W	WHITE CROSSWALK (WCW)	925	SF
L	WHITE LADDER CROSSWALK (WCW)	521	SF
Y	YELLOW THERMOPLASTIC CROSSWALK (YCW) 2696	521	SF
22 100'	LENGTH		
	CALTRANS STRIPING DETAIL NUMBER		



65% SUBMITTAL, DATED 10/22/19
NOT FOR CONSTRUCTION



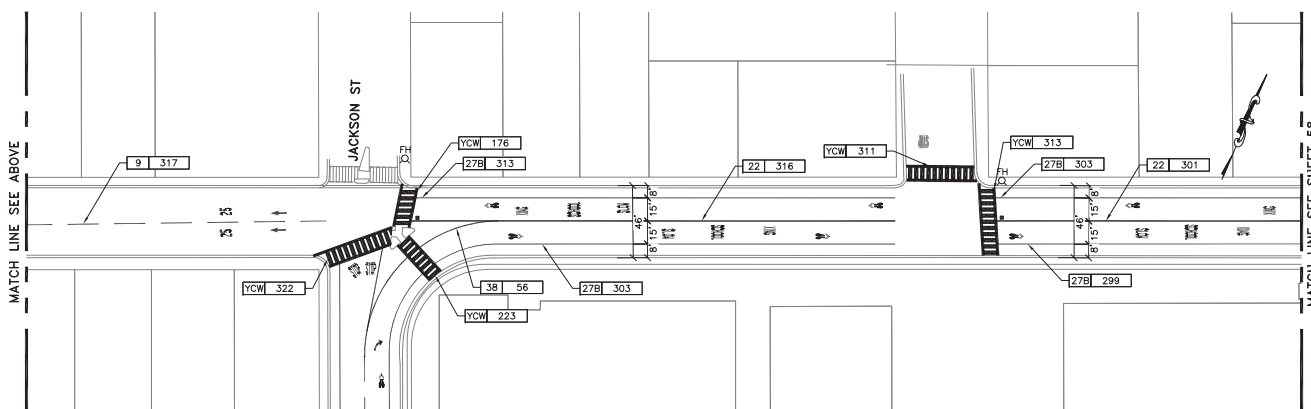
Designed by:

PROJECT No. CE		XX-XX-XX	
ACCOUNT No.		XXX-XXX-XXXX-XXXX	
DATE	No.	REVISION	B

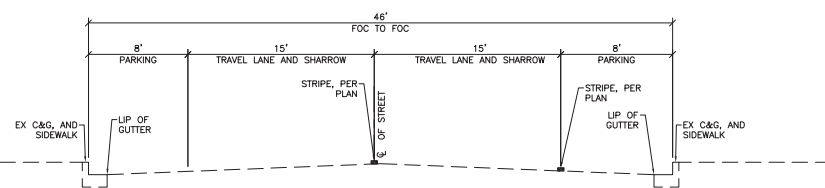
CITY OF SANTA CLARA
ENGINEERING DEPARTMENT
2020 ANNUAL STREET MAINTENANCE AND REHABILITATION PROJECT
SIGNING AND STRIPING LAYOUT
LOCATION 11: MARKET ST
(FROM SARATOGA AVE TO LAFAYETTE ST)

APPROVED BY			
TITLE			
DATE	INITIAL	DATE	R.C.E. No.
			Survey No.
DESIGNED BY	DS/HA	10/22	TRACING No.
DRAWN BY	EB/JL	10/22	
CHECKED BY	MF	10/22	
AS BUILT BY	-	-	

XXX
SHEET 56 OF XX



WB EB



TYPICAL STRIPING SECTION - MARKET ST
JACKSON ST TO LAFAYETTE BLVD
NO SCALE



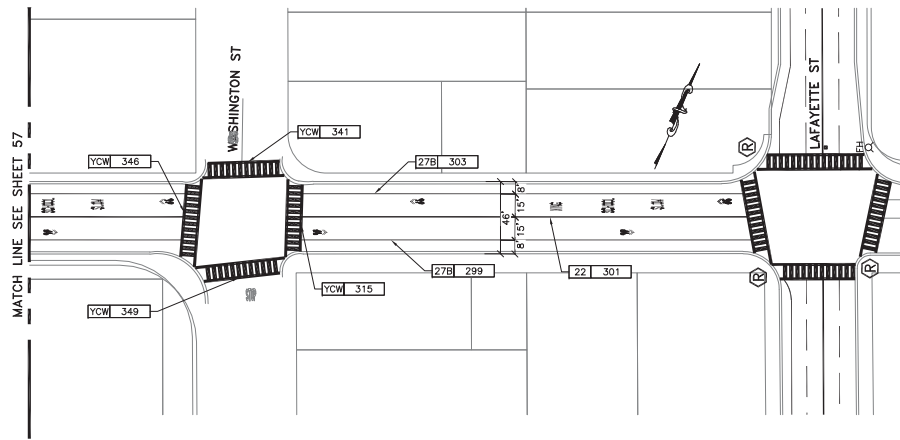
PROJECT No. CE		XX-XX-XX	
ACCOUNT No.		XXX-XXX-XXXX-XXXX	
DATE	No.	REVISION	BY

CITY OF SANTA CLARA
ENGINEERING DEPARTMENT
**2020 ANNUAL STREET MAINTENANCE
AND REHABILITATION PROJECT**
SIGNING AND STRIPING LAYOUT
LOCATION 11: MARKET ST
(FROM SARATOGA AVE TO LAFAYETTE ST)

APPROVED BY				
TITLE				
DATE			R.C.E. No.	
	INITIAL	DATE	Survey No.	
DESIGNED BY	DS/HA	10/22	TRACING No.	
DRAWN BY	EB/JL	10/22	XXX	
CHECKED BY	MF	10/22		
AS BUILT BY	-	-	SHEET 57 OF XX	



65% SUBMITTAL, DATED 10/22/19
NOT FOR CONSTRUCTION



MARKET STREET
SCALE: 1"= 40'



65% SUBMITTAL, DATED 10/22/19
NOT FOR CONSTRUCTION

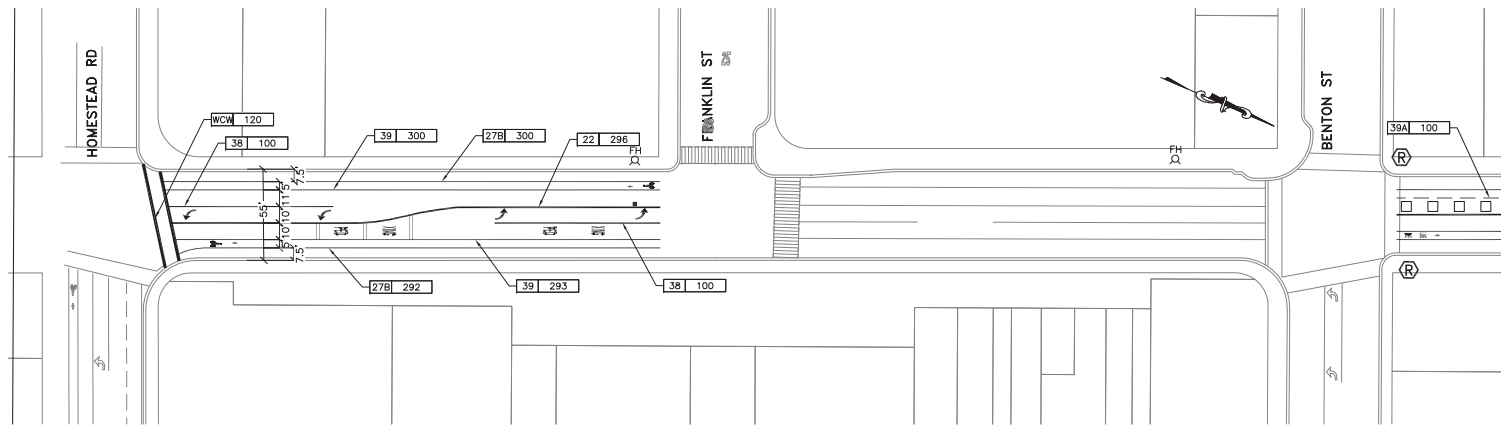


Designer Stamp

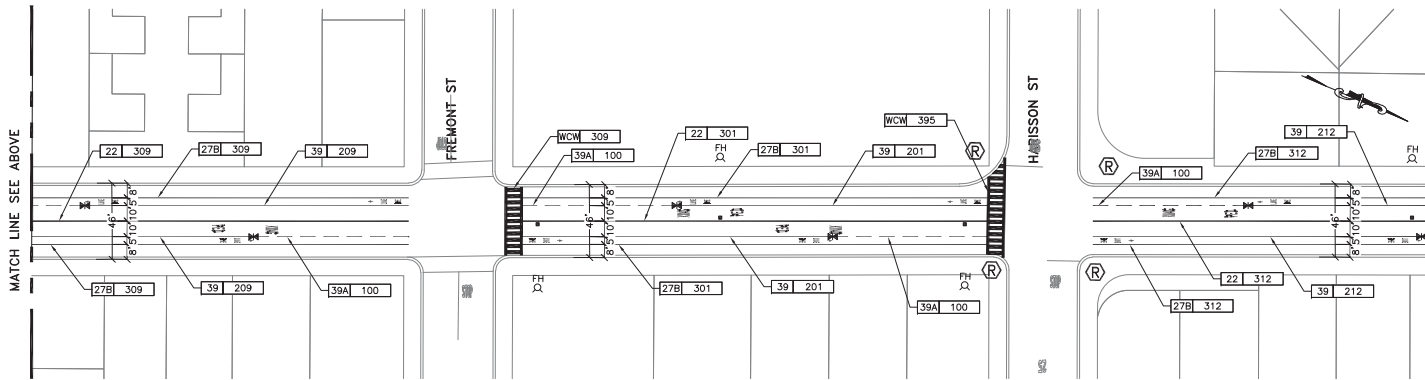
PROJECT No. CE		XX-XX-XX	
ACCOUNT No.		XXX-XXX-XXXX-XXXX	
DATE	No.	REVISION	BY

CITY OF SANTA CLARA			
ENGINEERING DEPARTMENT			
2020 ANNUAL STREET MAINTENANCE AND REHABILITATION PROJECT			
SIGNING AND STRIPING LAYOUT			
LOCATION 11: MARKET ST			
(FROM SARATOGA AVE TO LAFAYETTE ST)			

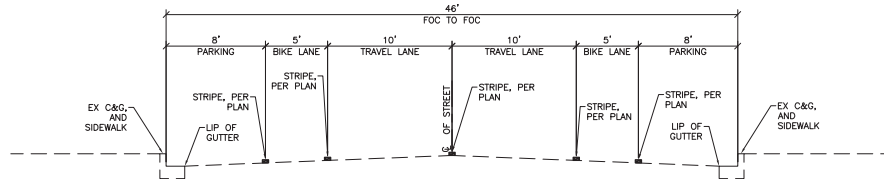
APPROVED BY			
TITLE			
DATE	INITIAL	DATE	R.C.E. No.
DESIGNED BY	DS/HA	10/22	Survey No.
DRAWN BY	EB/JL	10/22	TRACING No.
CHECKED BY	MF	10/22	XXX
AS BUILT BY	-	-	SHEET 58 OF XX



MONROE STREET
SCALE: 1"= 40'




SB NB MONROE STREET
SCALE: 1"= 40'



**TYPICAL STRIPING SECTION - MONROE ST
BENTON ST TO EL CAMINO REAL**
NO SCALE

LEGEND AND QUANTITIES (MONROE ST.)


SYMBOL	ITEM DESCRIPTION	QTY	UNIT
—	6" LIMIT LINE (LL)	71	LF
—	12" LIMIT LINE (LL)	35	LF
—	"PED" PAVEMENT MARKING	11	EA
—	"XING" PAVEMENT MARKING	11	EA
—	"30" PAVEMENT MARKING	2	EA
—	TYPE IV LEFT ARROW PAVEMENT MARKING	26	EA
—	BIKE LANE ARROW PAVEMENT MARKING	42	EA
—	"LANE" PAVEMENT MARKING	39	EA
—	"BIKE" PAVEMENT MARKING	39	EA
—	BIKE LANE PAVEMENT MARKING	3	EA
—	NO. 22 STRIPE	3341	LF
—	NO. 27B STRIPE	7422	LF
—	NO. 32 STRIPE	559	LF
—	NO. 38 STRIPE	1300	LF
—	NO. 39 STRIPE	5424	LF
—	NO. 39A STRIPE	2000	LF
—	BLUE FH PAVEMENT MARKER	10	EA
—	DETECTOR LOOP	12	EA
—	WHITE CROSSWALK (WCM)	735	SF
—	WHITE LADDER CROSSWALK (WCM)	2476	SF
—	YELLOW THERMOPLASTIC CROSSWALK (YCW) 468 (STANDARD OR LADDER)	—	SF
—	22 100'	—	—
—	LENGTH	—	—
—	CALTRANS STRIPING DETAIL NUMBER	—	—



Know what's below.
Call before you dig.

65% SUBMITTAL, DATED 10/22/19
NOT FOR CONSTRUCTION

Prepared by:



Employee - Owned

Designer/Checker:

PROJECT No. **CE XX-XX-XX**

ACCOUNT No. **XXX-XXX-XXXX-XXXX**

DATE	No.	REVISION	BY

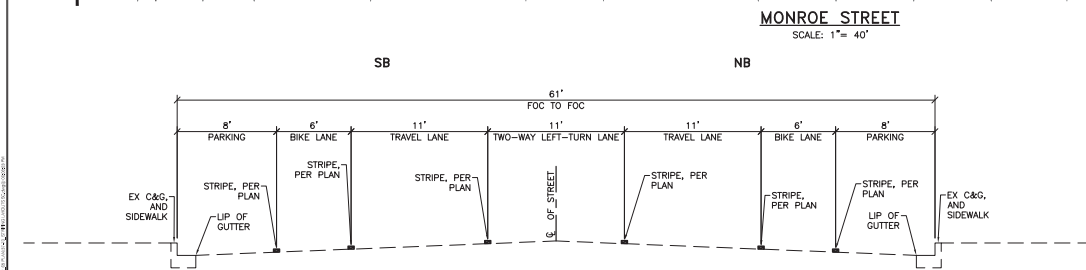
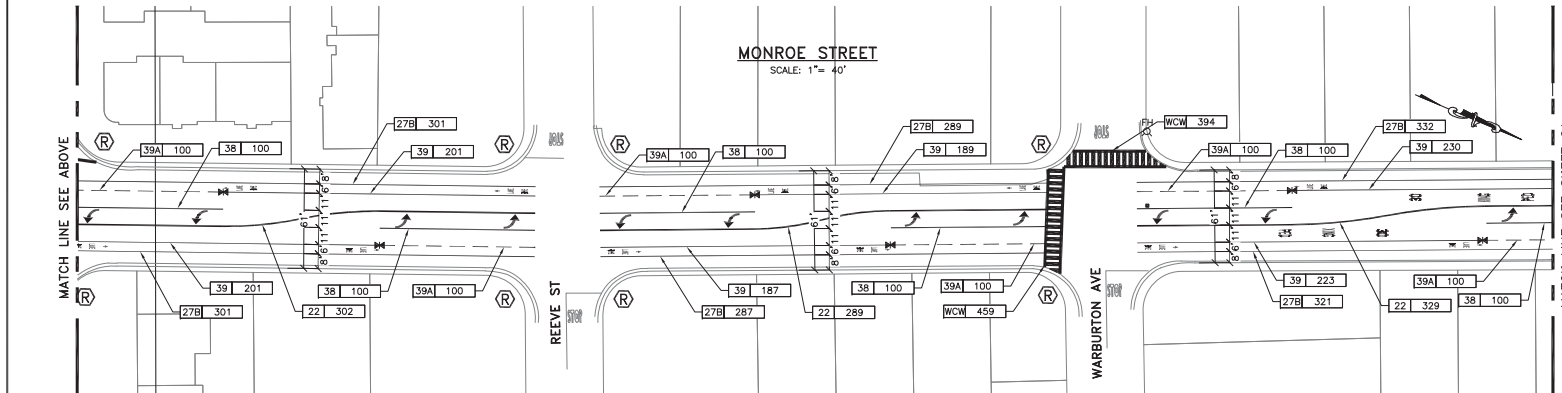
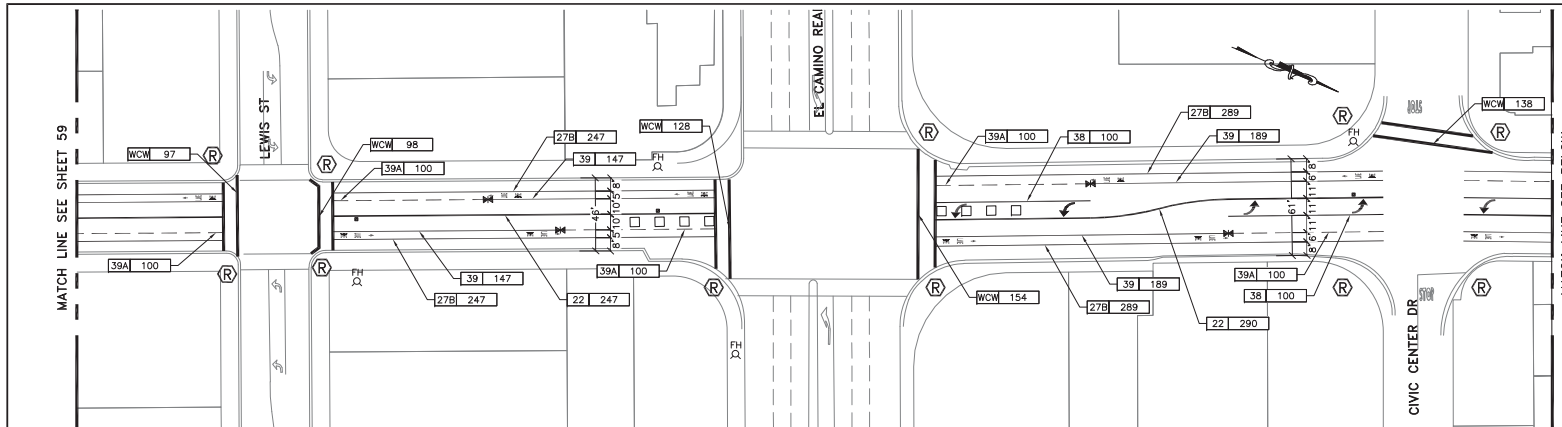
CITY OF SANTA CLARA
ENGINEERING DEPARTMENT

**2020 ANNUAL STREET MAINTENANCE
AND REHABILITATION PROJECT**

**SIGNING AND STRIPING LAYOUT
LOCATIONS 11, 12 AND 13; MONROE ST
(FROM HOMESTEAD RD TO CARRILLO AVE)**

APPROVED BY:

TITLE		DATE		R.C.E. No.	
DESIGNED BY	DS/HA	DATE	10/22	TRACING No.	
DRAWN BY	EB/JL	DATE	10/22	XXX	
CHECKED BY	MF	DATE	10/22		
AS BUILT BY	-	DATE	-	SHEET 59 OF XX	



TYPICAL STRIPING SECTION - MONROE ST
EL CAMINO REAL TO CABRILLO AVE
NO SCALE



65% SUBMITTAL, DATED 10/22/19
NOT FOR CONSTRUCTION

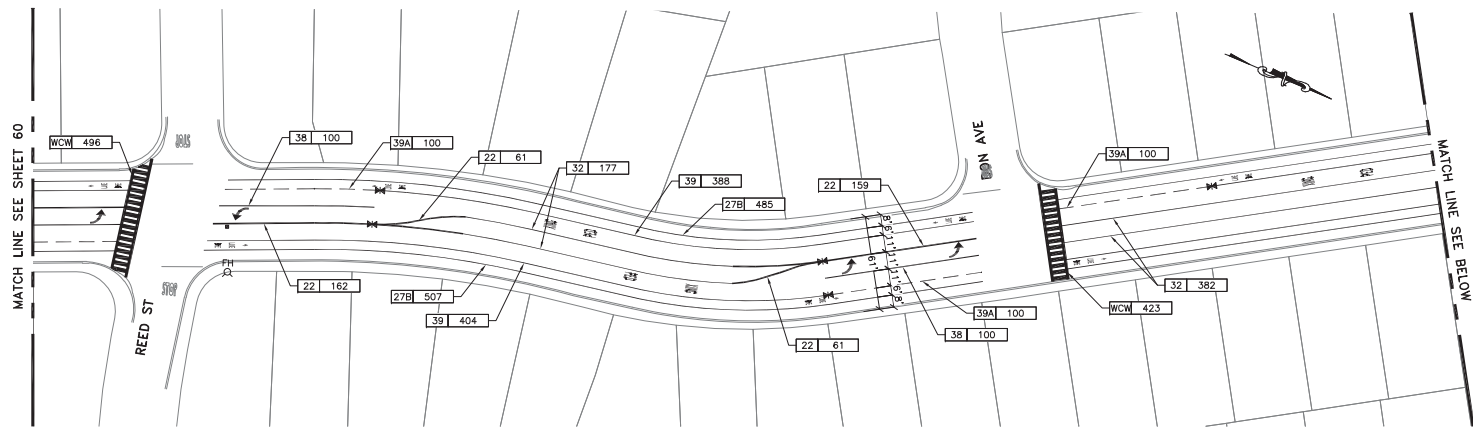


Designer Stamp

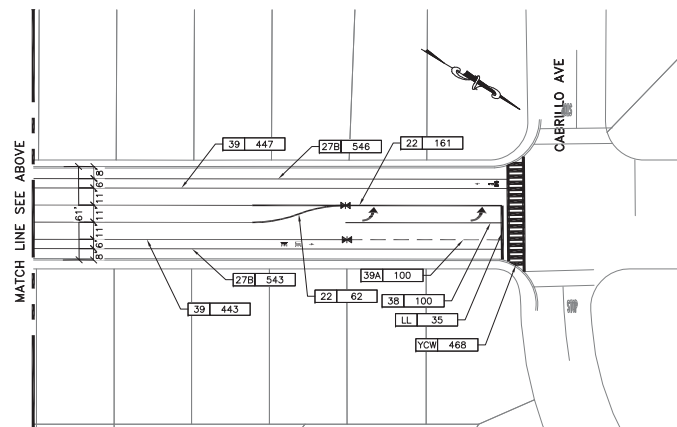
PROJECT No. CE		XX-XX-XX	
ACCOUNT No.		XXX-XXX-XXXX-XXXX	
DATE	No.	REVISION	BY

CITY OF SANTA CLARA
ENGINEERING DEPARTMENT
2020 ANNUAL STREET MAINTENANCE AND REHABILITATION PROJECT
SIGNING AND STRIPING LAYOUT
LOCATIONS 11, 12 AND 13: MONROE ST
(FROM HOMESTEAD RD TO CABRILLO AVE)

APPROVED BY	TITLE	R.C.E. No.
DATE	DATE	Survey No.
DESIGNED BY DS/HA	DATE 10/22	TRACING No.
DRAWN BY EB/JL	DATE 10/22	XXX
CHECKED BY MF	DATE 10/22	
AS BUILT BY -	-	SHEET 60 OF XX



MONROE STREET
SCALE: 1" = 40'



MONROE STREET
SCALE: 1" = 40'

Prepared by:



Designer Stamp:

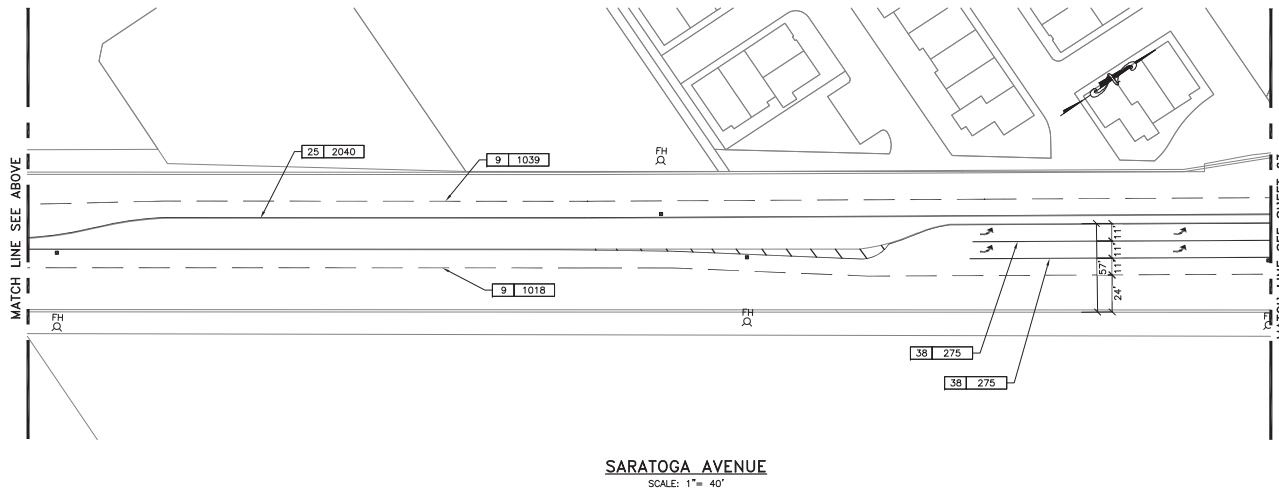
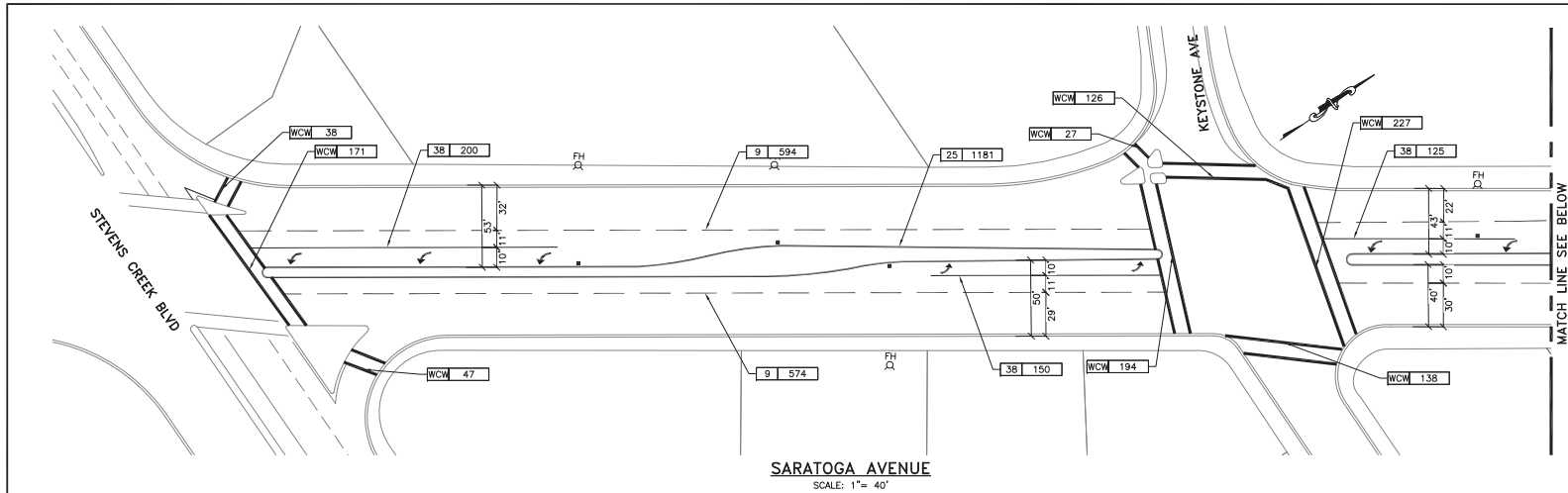
PROJECT No. CE		XX-XX-XX	
ACCOUNT No.		XXX-XXX-XXXX-XXXX	
DATE	No.	REVISION	BY

CITY OF SANTA CLARA			
ENGINEERING DEPARTMENT			
2020 ANNUAL STREET MAINTENANCE AND REHABILITATION PROJECT			
STRIPING LAYOUT			
LOCATIONS 11, 12 AND 13: MONROE ST (FROM HOMESTEAD RD TO CABRILLO AVE)			

APPROVED BY			
TITLE		R.C.E. No.	
DATE	INITIAL	DATE	Survey No.
DESIGNED BY	DS/HA	10/22	TRACING No.
DRAWN BY	EB/JL	10/22	XXX
CHECKED BY	MF	10/22	
AS BUILT BY	-	-	SHEET 61 OF XX



65% SUBMITTAL, DATED 10/22/19
NOT FOR CONSTRUCTION



LEGEND AND QUANTITIES (SARATOGA AVE.)

SYMBOL	ITEM DESCRIPTION	QTY	UNIT
	12" LIMIT LINE (LL)	39	LF
	"STOP" PAVEMENT MARKING	2	EA
	"XING" PAVEMENT MARKING	2	EA
	BIKE LANE ARROW PAVEMENT MARKING	20	EA
	"LANE" PAVEMENT MARKING	20	EA
	"BIKE" PAVEMENT MARKING	20	EA
	SHARROW PAVEMENT MARKING	10	EA
	TYPE IV LEFT ARROW PAVEMENT MARKING	33	EA
	TYPE IV RIGHT ARROW PAVEMENT MARKING	2	EA
	TYPE I 18" ARROW PAVEMENT MARKING	2	EA
	NO. 9 STRIPE	13453	LF
	NO. 25 STRIPE	13331	LF
	NO. 27B STRIPE	5359	LF
	NO. 38 STRIPE	3675	LF
	NO. 39 STRIPE	4793	LF
	NO. 39A STRIPE	435	LF
	BLUE FH PAVEMENT MARKER	34	EA
	WHITE CROSSWALK (WCM)	2815	SF
	YELLOW THERMOPLASTIC CROSSWALK (YCW) (STANDARD OR LADDER)	2815	SF
	LENGTH CALTRANS STRIPING DETAIL NUMBER	22	100'



65% SUBMITTAL, DATED 10/22/19
NOT FOR CONSTRUCTION

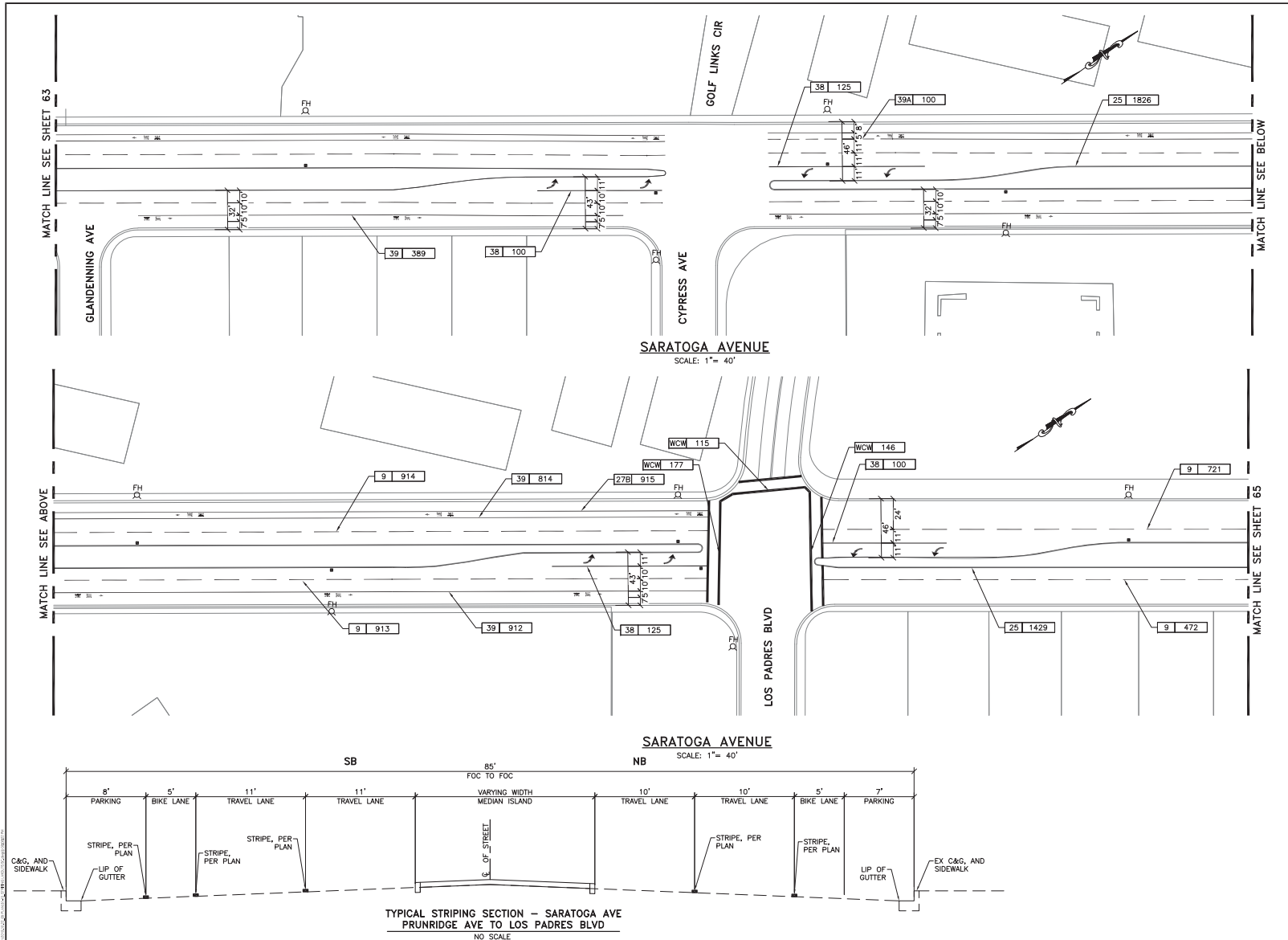


Designer Stamp

PROJECT No. CE		XX-XX-XX	
ACCOUNT No.		XXX-XXX-XXXX-XXXX	
DATE	No.	REVISION	

CITY OF SANTA CLARA
ENGINEERING DEPARTMENT
2020 ANNUAL STREET MAINTENANCE AND REHABILITATION PROJECT
SIGNING AND STRIPING LAYOUT
LOCATION 15: SARATOGA AVE
(FROM STEVENS CREEK BLVD TO MARKET ST)

APPROVED BY	TITLE
DATE	DATE
INITIAL	DATE
DESIGNED BY DS/HA	10/22
DRAWN BY EB/JL	10/22
CHECKED BY MF	10/22
AS BUILT BY	-
R.C.E. No.	Survey No.
TRACING No.	XXX
SHEET	62 OF XX



**65% SUBMITTAL, DATED 10/22/19
NOT FOR CONSTRUCTION**

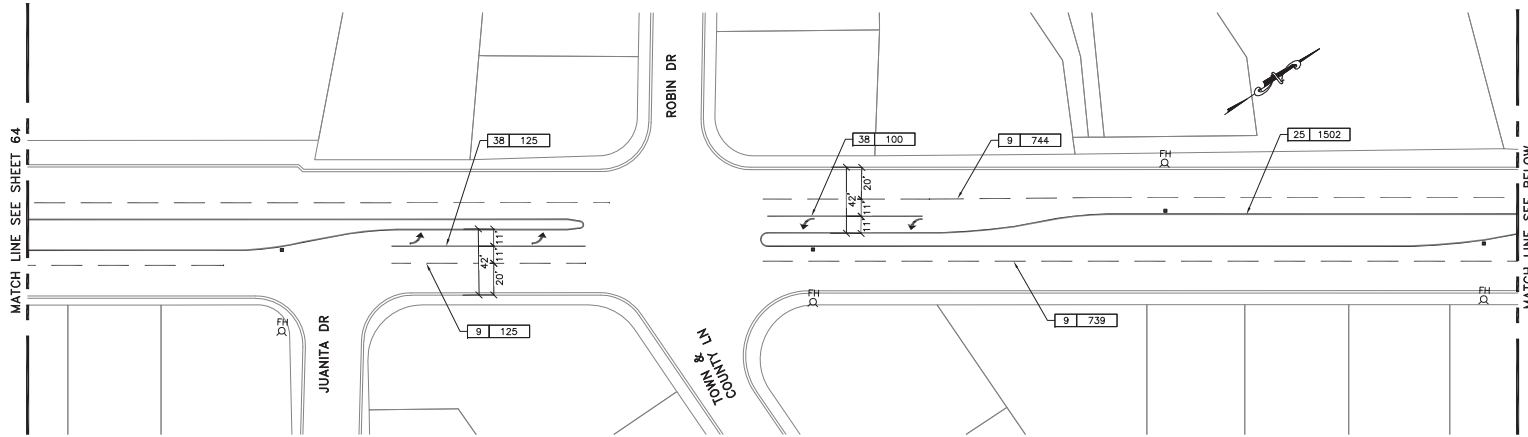


Designer Stamp

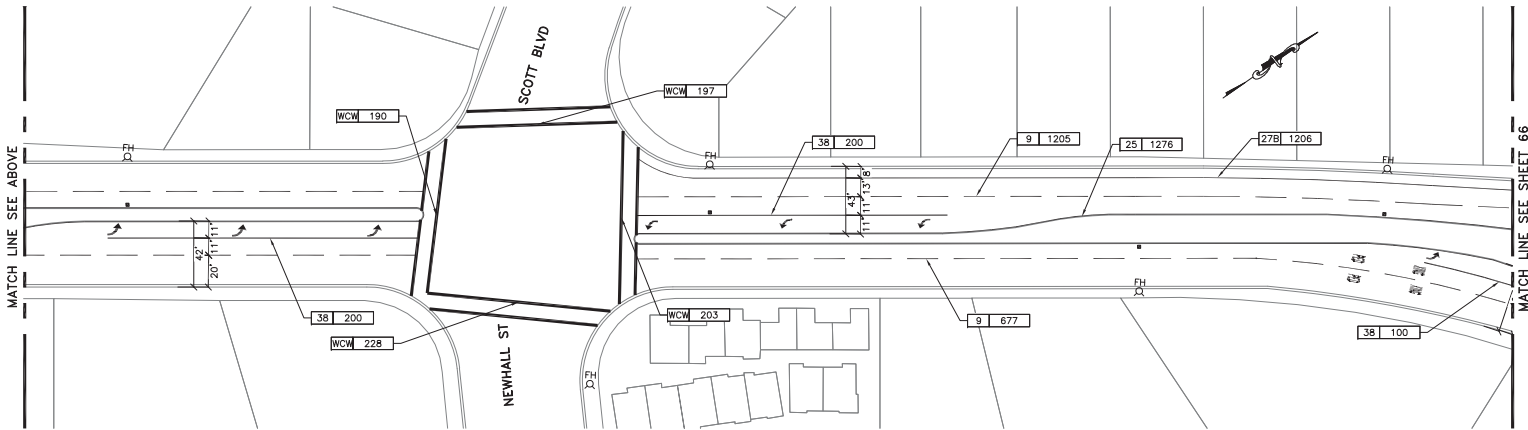
PROJECT No. CE		XX-XX-XX	
ACCOUNT No.		XXX-XXX-XXXX-XXXX	
DATE	No.	REVISION	B

CITY OF SANTA CLARA
ENGINEERING DEPARTMENT
**2020 ANNUAL STREET MAINTENANCE
AND REHABILITATION PROJECT**
SIGNING AND STRIPING LAYOUT
LOCATION 15: SARATOGA AVE
(FROM STEVENS CREEK BLVD TO MARKET ST)

APPROVED BY	TITLE
DATE	DATE
INITIAL	DATE
DESIGNED BY DS/HA	10/22
DRAWN BY EB/JL	10/22
CHECKED BY MF	10/22
AS BUILT BY	-
R.C.E. No.	Survey No.
TRACING No.	XXX
SHEET	64 OF XX



SARATOGA AVENUE
SCALE: 1"= 40'



SARATOGA AVENUE
SCALE: 1"= 40'

Prepared by:



Designer Stamp:

PROJECT No. CE		XX-XX-XX	
ACCOUNT No.		XXX-XXX-XXXXX-XXXX	
DATE	No.	REVISION	BY

CITY OF SANTA CLARA
ENGINEERING DEPARTMENT
**2020 ANNUAL STREET MAINTENANCE
AND REHABILITATION PROJECT**
SIGNING AND STRIPING LAYOUT
LOCATION 15: SARATOGA AVE
(FROM STEVENS CREEK BLVD TO MARKET ST)

APPROVED BY			
TITLE			
DATE	INITIAL	DATE	R.C.E. No.
DESIGNED BY	DS/HA	10/22	Survey No.
DRAWN BY	EB/JL	10/22	TRACING No.
CHECKED BY	MF	10/22	XXX
AS BUILT BY	-	-	SHEET 65 OF XX



Know what's below.
Call before you dig.

**65% SUBMITTAL, DATED 10/22/19
NOT FOR CONSTRUCTION**



Prepared by

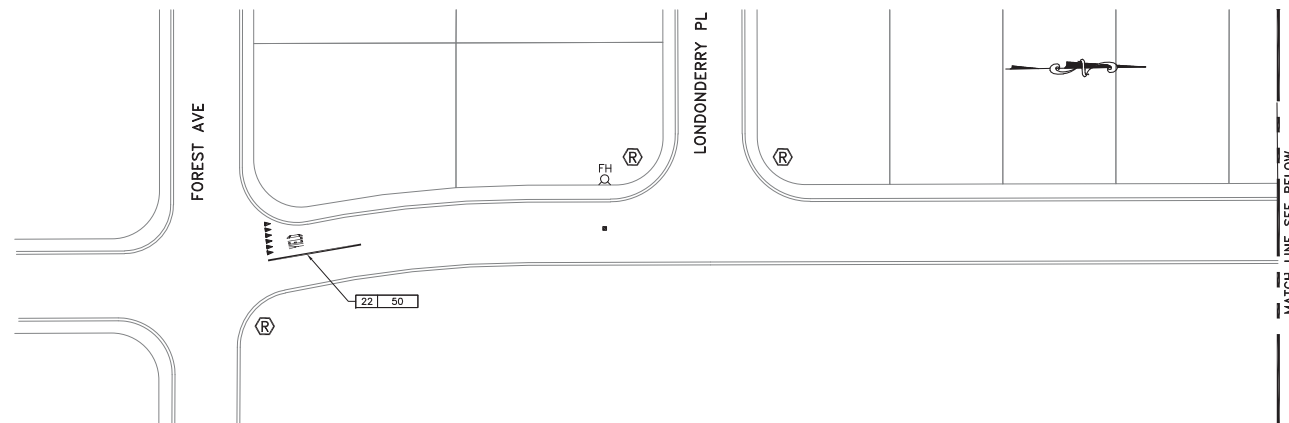


CSG
CONSULTANTS

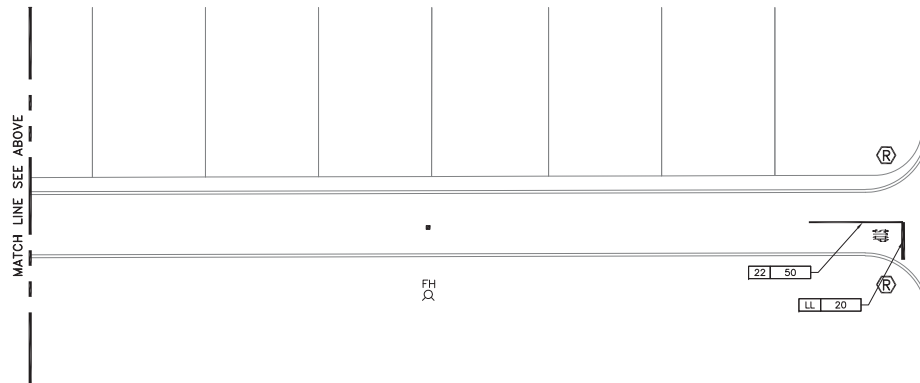
Employee - Owned

PROJECT No. CE		XX-XX-XX	
ACCOUNT No.		XXX-XXX-XXXX-XXXX	
DATE	No.	REVISION	B

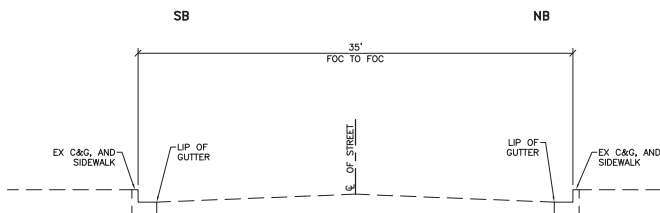
APPROVED BY			
TITLE			
DATE			R.C.E. No.
	INITIAL	DATE	Survey No.
DESIGNED BY	DS/HA	10/22	TRACING No.
DRAWN BY	EB/JL	10/22	XXX
CHECKED BY	MF	10/22	
AS BUILT BY			
			SHEET 66 OF XX



WESTRIDGE DRIVE
SCALE: 1" = 40'



WESTRIDGE DRIVE
SCALE: 1" = 40'



TYPICAL STRIPING SECTION - WESTRIDGE RD
NO SCALE

LEGEND AND QUANTITIES (WESTRIDGE DR.)

SYMBOL	ITEM DESCRIPTION	QTY	UNIT
—	12" LIMIT LINE (LL)	20	LF
~~~~~	YIELD LINE PAVEMENT MARKING	15	SE
STOP	"STOP" PAVEMENT MARKING	1	EA
YIELD	"YIELD" PAVEMENT MARKING	1	EA
—	NO. 22 STRIPE	100	LF
■	BLUE FH PAVEMENT MARKER	2	EA



Know what's below.  
Call before you dig.

**65% SUBMITTAL, DATED 10/22/19**  
**NOT FOR CONSTRUCTION**

Prepared by:



Designer/Checker:

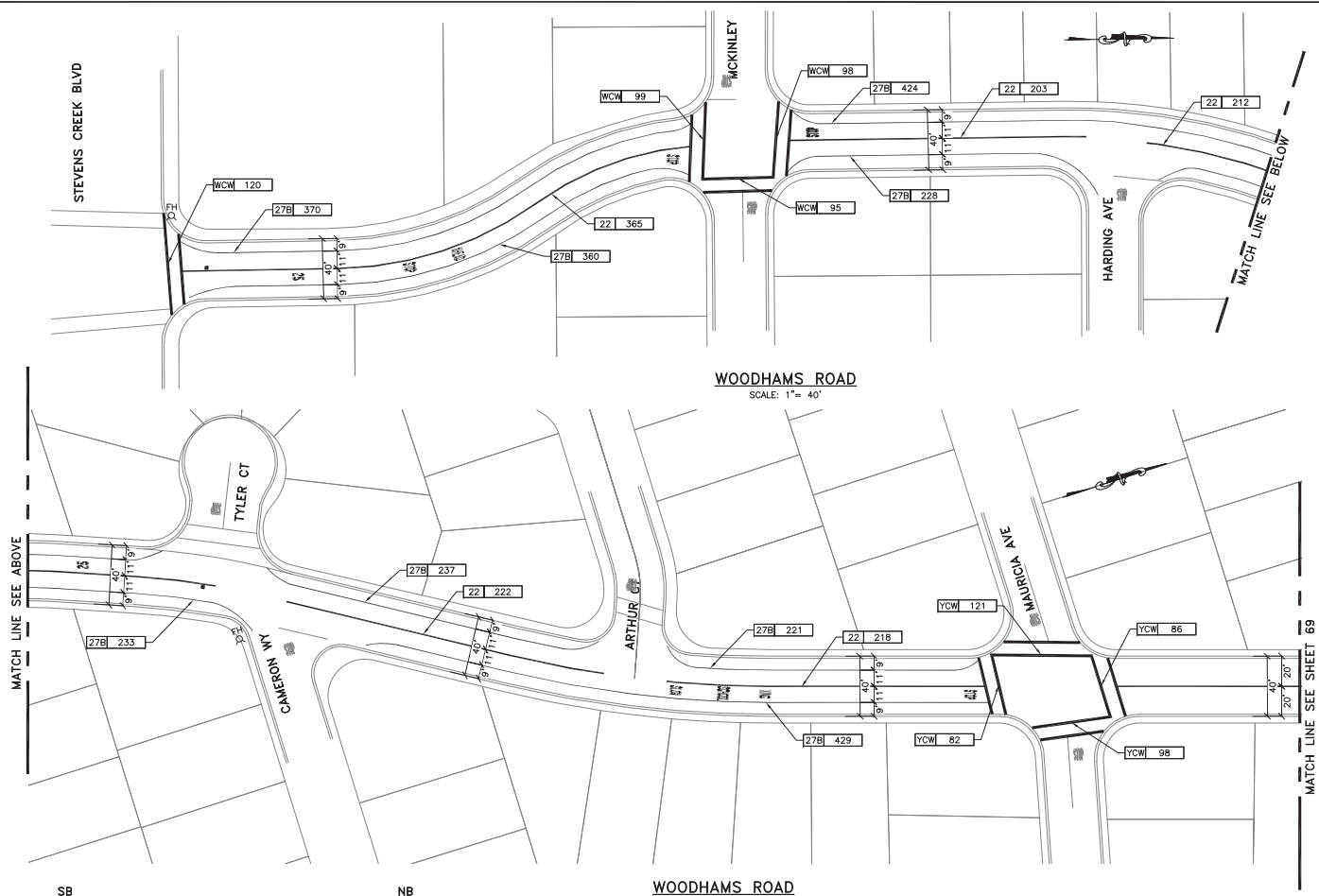
PROJECT No.	CE	XX-XX-XX
ACCOUNT No.		XXX-XXX-XXXX-XXXX
DATE	No.	REVISION

<b>CITY OF SANTA CLARA</b>			
ENGINEERING DEPARTMENT			
<b>2020 ANNUAL STREET MAINTENANCE AND REHABILITATION PROJECT</b>			
SIGNING AND STRIPING LAYOUT			
LOCATION 16: WESTRIDGE DR			
(FROM FOREST AVE TO PRUNERIDGE AVE)			

APPROVED BY:			
TITLE			
DATE	INITIAL	DATE	R.C.E. No.
	DS/HA	10/22	Survey No.
DESIGNED BY	EB/JL	10/22	TRACING No.
DRAWN BY	MF	10/22	
CHECKED BY			
AS BUILT BY	-	-	

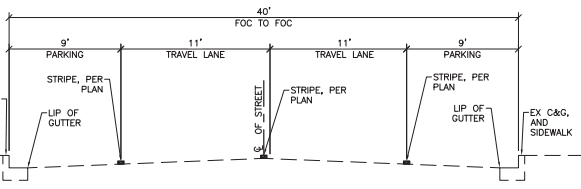
**XXX**

SHEET 67 OF XX



**LEGEND AND QUANTITIES (WOODHAM'S RD.)**

SYMBOL	ITEM DESCRIPTION	QTY	UNIT
STOP	"STOP" PAVEMENT MARKING	9	EA
AHEAD	"AHEAD" PAVEMENT MARKING	3	EA
XING	"XING" YELLOW PAVEMENT MARKING	2	EA
SLOW	"SLOW" YELLOW PAVEMENT MARKING	2	EA
SCHOOL	"SCHOOL" YELLOW PAVEMENT MARKING	2	EA
25	"25" PAVEMENT MARKING	2	EA
TYPE IV	TYPE IV LEFT ARROW PAVEMENT MARKING	2	EA
NO. 22	NO. 22 STRIPE	3685	LF
NO. 27B	NO. 27B STRIPE	2531	LF
NO. 38	NO. 38 STRIPE	50	LF
BLUE FH	BLUE FH PAVEMENT MARKER	9	EA
WHITE	WHITE CROSSWALK (WCW)	224	SF
THERMOPLASTIC	THERMOPLASTIC CROSSWALK (STANDARD OR LADDER, WHITE OR YELLOW)	387	SF
22 100'	LENGTH		
	CALTRANS STRIPING DETAIL NUMBER		



TYPICAL STRIPING SECTION - WOODHAM'S RD  
STEVENS CREEK BLVD TO MAURICIA AVE  
NO SCALE

**65% SUBMITTAL, DATED 10/22/19**  
**NOT FOR CONSTRUCTION**



Designer Stamp

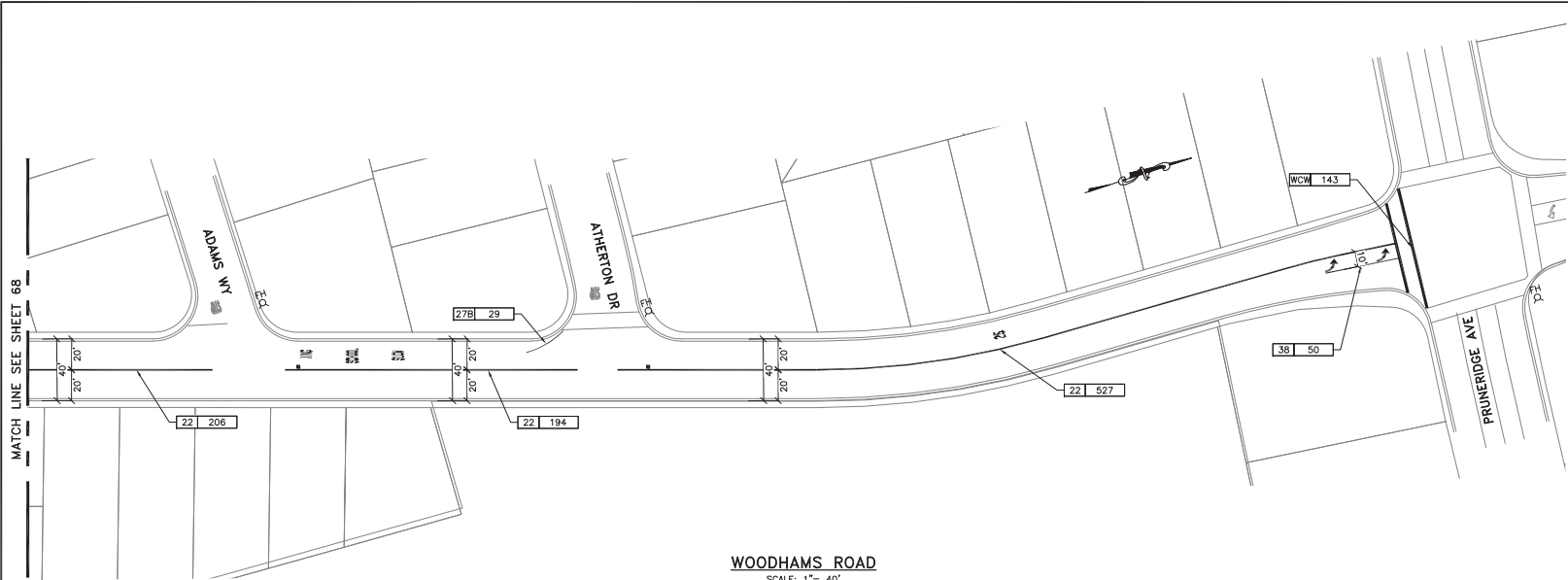
PROJECT No. CE	XX-XX-XX
ACCOUNT No.	XXX-XXX-XXXX-XXXX
DATE	No. REVISION BY

**CITY OF SANTA CLARA**  
ENGINEERING DEPARTMENT  
**2020 ANNUAL STREET MAINTENANCE AND REHABILITATION PROJECT**  
SIGNING AND STRIPING LAYOUT  
LOCATION 17: WOODHAM'S RD  
(FROM STEVENS CREEK BLVD TO PRIMERIDGE AVE)

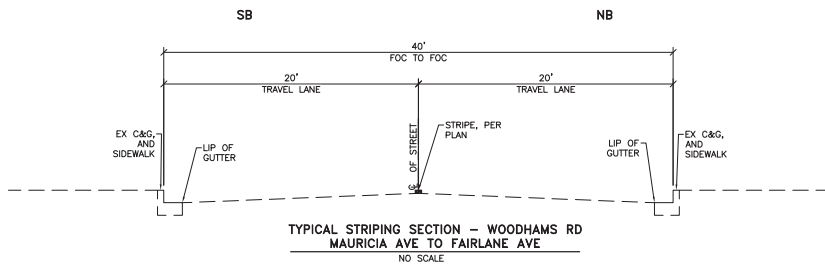
APPROVED BY			
TITLE			
DATE	INITIAL	DATE	R.C.E. No.
	DS/HA	10/22	Survey No.
DESIGNED BY	EB/JL	10/22	TRACING No.
DRAWN BY	MF	10/22	
CHECKED BY	-	-	
AS BUILT BY	-	-	







WOODHAMS ROAD  
SCALE: 1" = 40'



**65% SUBMITTAL, DATED 10/22/19  
NOT FOR CONSTRUCTION**

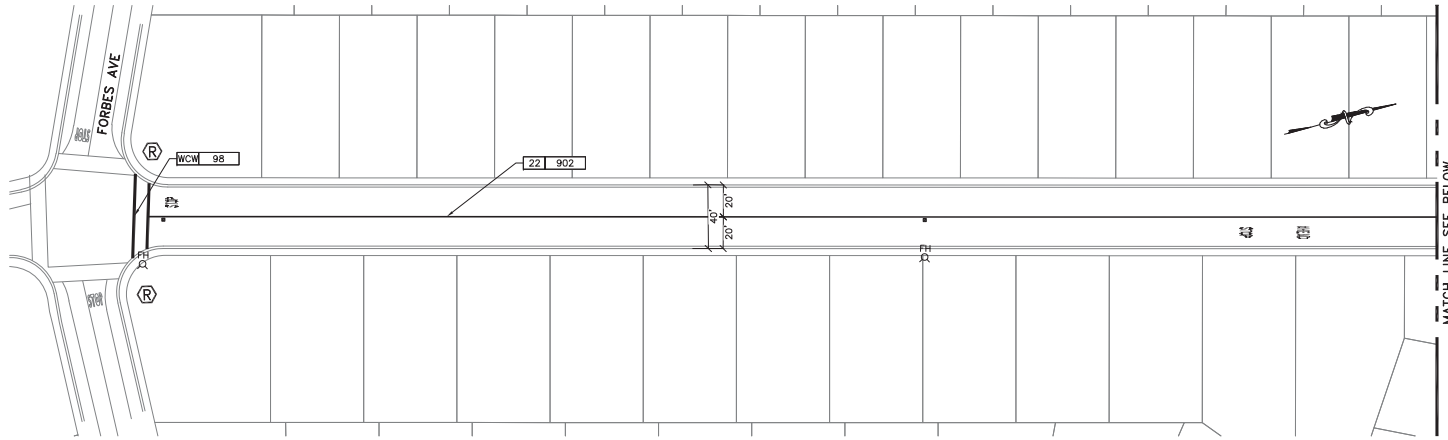


Designer Stamp

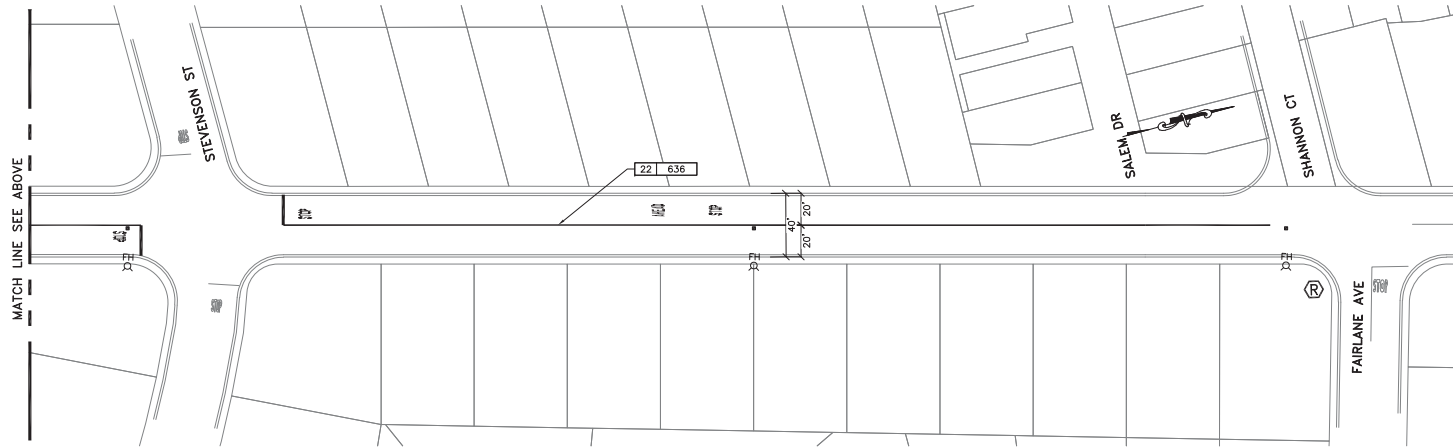
PROJECT No. CE		XX-XX-XX	
ACCOUNT No.		XXX-XXX-XXXXX-XXXX	
DATE	No.	REVISION	BY

**CITY OF SANTA CLARA**  
ENGINEERING DEPARTMENT  
**2020 ANNUAL STREET MAINTENANCE  
AND REHABILITATION PROJECT**  
SIGNING AND STRIPING LAYOUT  
LOCATION 17: WOODHAMS RD  
(FROM STEVENS CREEK BLVD TO PRUNERIDGE AVE)

APPROVED BY			
TITLE			
DATE	INITIAL	DATE	R.C.E. No.
DESIGNED BY	DS/HA	10/22	Survey No.
DRAWN BY	EB/JL	10/22	TRACING No.
CHECKED BY	MF	10/22	XXX
AS BUILT BY	-	-	SHEET 69 OF XX



WOODHAMS ROAD  
SCALE: 1"= 40'



WOODHAMS ROAD  
SCALE: 1"= 40'

Prepared by:



Designer/Checker:

PROJECT No. CE		XX-XX-XX	
ACCOUNT No.		XXX-XXX-XXXX-XXXX	
DATE	No.	REVISION	BY

**CITY OF SANTA CLARA**  
ENGINEERING DEPARTMENT

**2020 ANNUAL STREET MAINTENANCE AND REHABILITATION PROJECT**

**SIGNING AND STRIPING LAYOUT**  
LOCATION 17: WOODHAMS RD  
(FROM STEVENS CREEK BLVD TO PRIMERIDGE AVE)

APPROVED BY			
TITLE		R.C.E. No.	
DATE	INITIAL	DATE	Survey No.
DESIGNED BY	DS/HA	10/22	TRACING No.
DRAWN BY	EB/JL	10/22	XXX
CHECKED BY	MF	10/22	
AS BUILT BY	-	-	SHEET 70 OF XX



**65% SUBMITTAL, DATED 10/22/19**  
**NOT FOR CONSTRUCTION**