

# CONSOLIDATED BOUNDARIES OF CITY OF SANTA CLARA COMMUNITY FACILITIES DISTRICT NO. 2010-1

SANTA CLARA COUNTY, STATE OF CALIFORNIA

SHEET 1 OF 3

1. FILED IN THE OFFICE OF THE CITY CLERK OF THE CITY OF SANTA CLARA  
THIS \_\_\_\_\_ DAY OF \_\_\_\_\_, 2019.

NORA PIMENTEL, MMC  
ASSISTANT CITY CLERK

2. I HEREBY CERTIFY THAT THE WITHIN MAP SHOWING PROPOSED  
BOUNDARIES OF CITY OF SANTA CLARA, COMMUNITY FACILITIES DISTRICT  
NO. 2010-1, COUNTY OF SANTA CLARA, STATE OF CALIFORNIA, WAS  
APPROVED BY THE CITY COUNCIL OF THE CITY OF SANTA CLARA, AT A  
MEETING THEREOF, HELD ON THE \_\_\_\_\_ DAY OF \_\_\_\_\_  
2019, BY ITS RESOLUTION NO. \_\_\_\_\_.

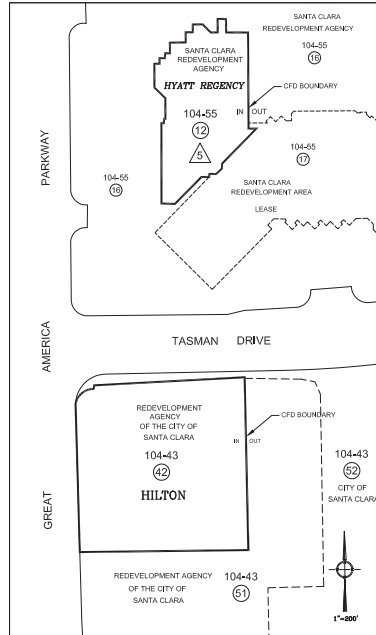
NORA PIMENTEL, MMC  
ASSISTANT CITY CLERK

3. FILED THIS \_\_\_\_\_ DAY OF \_\_\_\_\_, 2019, AT THE HOUR  
OF \_\_\_\_\_ O'CLOCK \_\_\_\_\_ M, IN BOOK \_\_\_\_\_ OF MAPS OF ASSESSMENT AND  
COMMUNITY FACILITIES DISTRICTS AT PAGE \_\_\_\_\_ IN THE OFFICE OF  
THE COUNTY RECORDER IN THE COUNTY OF SANTA CLARA, STATE OF  
CALIFORNIA.

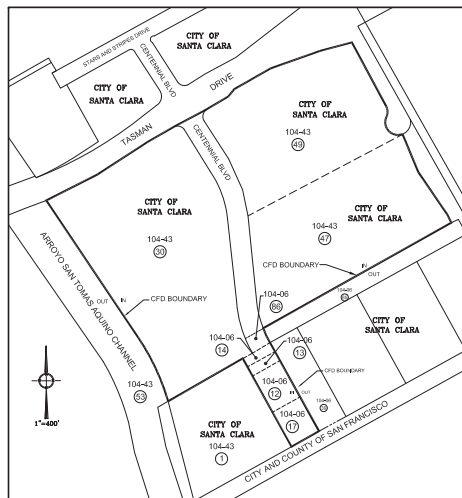
COUNTY RECORDER  
COUNTY OF SANTA CLARA

## LEGEND

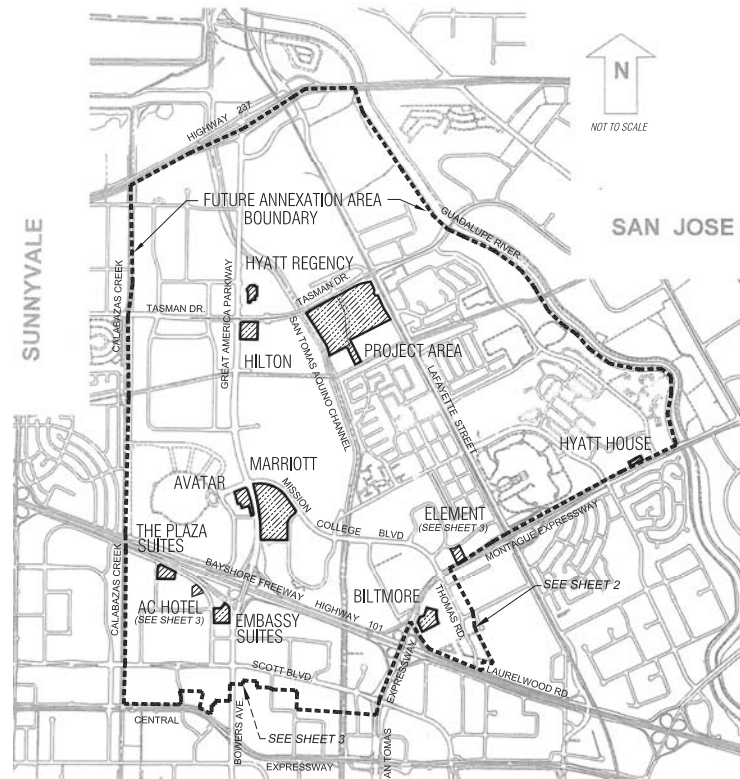
- 104-41 ASSESSOR'S BOOK AND PAGE
- (6) ASSESSOR PARCEL NUMBER
- (5) ASSESSOR PARCEL LEASE NUMBER
- COMMUNITY FACILITIES DISTRICT BOUNDARY
- FUTURE ANNEXATION AREA BOUNDARY

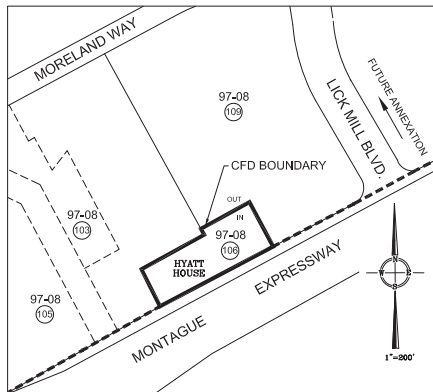


HYATT REGENCY AND HILTON SITES

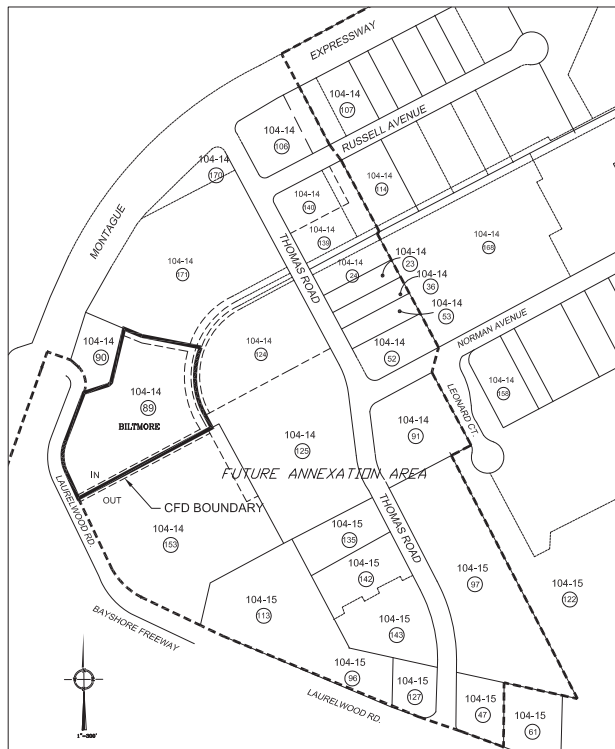


PROJECT AREA

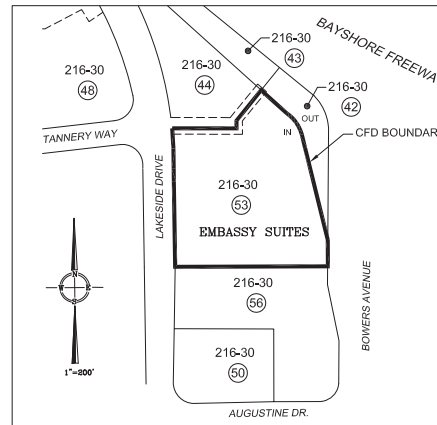




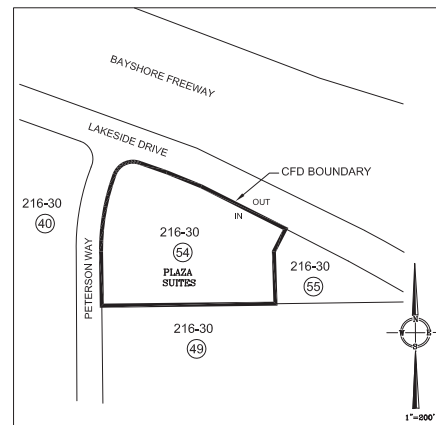
HYATT HOUSE SITE



BILTMORE SITE



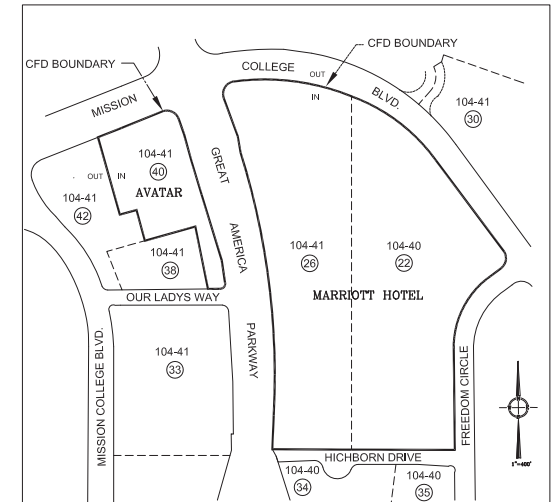
EMBASSY SUITES SITE



PLAZA SUITES SITE

CONSOLIDATED BOUNDARIES OF  
CITY OF SANTA CLARA  
COMMUNITY FACILITIES DISTRICT NO. 2010-1  
SANTA CLARA COUNTY, STATE OF CALIFORNIA

SHEET 2 OF 3



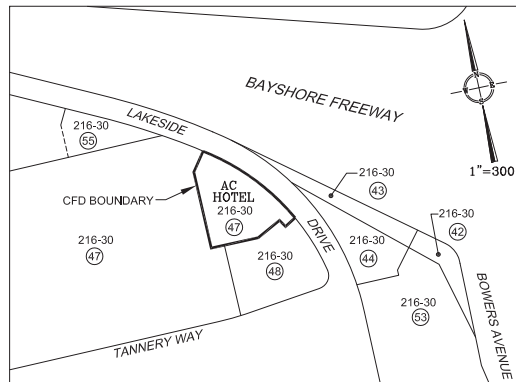
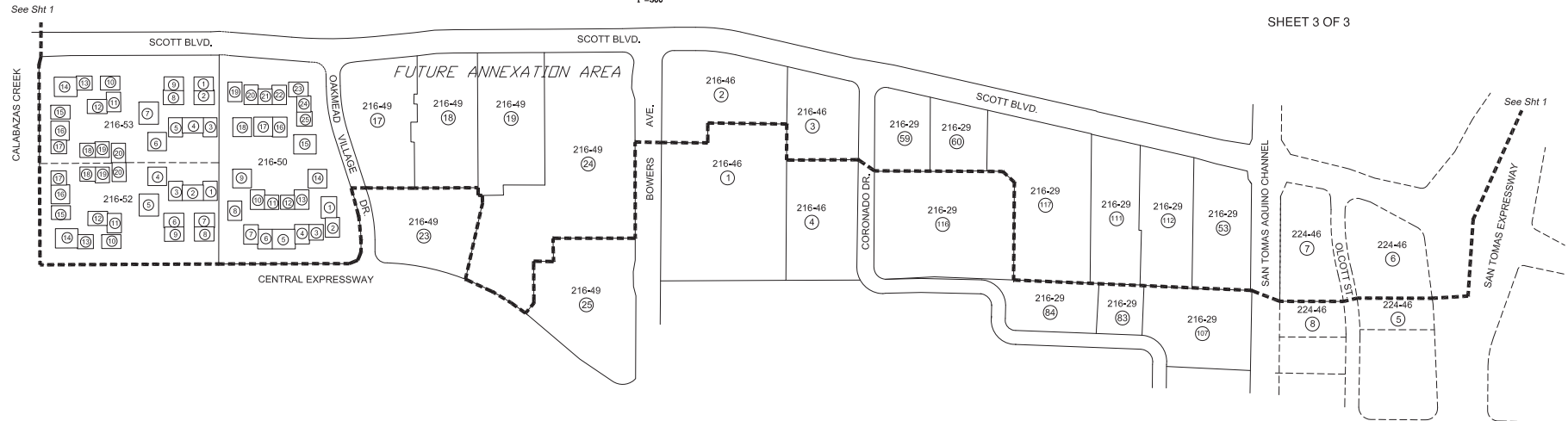
AVATAR AND MARRIOTT HOTEL SITES

LEGEND

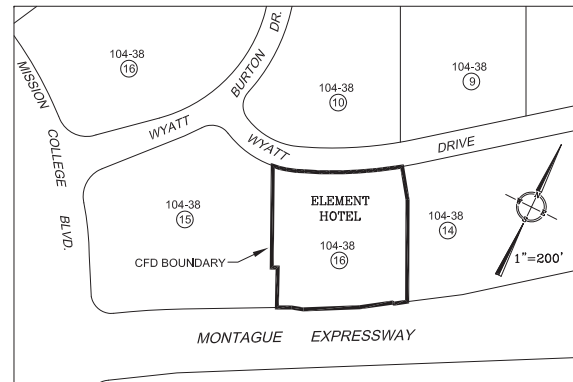
- 104-41 ASSESSOR'S BOOK AND PAGE
- (6) ASSESSOR PARCEL NUMBER
- (5) ASSESSOR PARCEL LEASE NUMBER
- COMMUNITY FACILITIES DISTRICT BOUNDARY
- FUTURE ANNEXATION AREA BOUNDARY

CONSOLIDATED BOUNDARIES OF  
CITY OF SANTA CLARA  
**COMMUNITY FACILITIES DISTRICT NO. 2010-1**  
SANTA CLARA COUNTY, STATE OF CALIFORNIA

SHEET 3 OF 3



AC HOTEL SITE



ELEMENT HOTEL SITE

LEGEND

- 104-41 ASSESSOR'S BOOK AND PAGE
- ⑥ ASSESSOR PARCEL NUMBER
- △ ASSESSOR PARCEL LEASE NUMBER
- COMMUNITY FACILITIES DISTRICT BOUNDARY
- FUTURE ANNEXATION AREA BOUNDARY