

Eureka!

Eat · Drink · American

HEALTH DEPARTMENT SUBMITTAL EUREKA! SANTA CLARA SQUARE MARKET PLACE

SHEET INDEX

ARCHITECTURAL	
A000	COVERSHEET
A101	SITE PLAN
A101	NOTED FLOOR PLAN
A102	FURNITURE & MILLWORK FLOOR PLAN
A200	FINISH FLOOR PLAN
A201	FINISH, FURNITURE, & MILLWORK SCHEDULES
A300	REFLECTED CEILING PLAN & LIGHTING SCHEDULE
MECHANICAL	
K1	EQUIPMENT PLAN
K1.1	EQUIPMENT SCHEDULE
K1.2	EQUIPMENT SCHEDULE
K2	ELECTRICAL PLAN
K3	PLUMBING PLAN
K3.1	FLOOR SINK PLAN
K4	WALL BACKING DETAIL
K5	ELEVATIONS
K5.1	ELEVATIONS
K6	DETAILS
H1	HOOD DRAWING 1
H2	HOOD DRAWING 2
H3	HOOD DRAWING 3
H4	HOOD DRAWING 4
H5	HOOD DRAWING 5
H6	HOOD DRAWING 6
H7	HOOD DRAWING 7
H8	HOOD DRAWING 8
H9	HOOD DRAWING 9
H10	HOOD DRAWING 10
WI-1	WALKIN DRAWING 1

Eureka!
Eat · Drink · American

ENGINEERS:

ARCHITECT:

NORR

300 N. LASALLE ST. SUITE 500 CHICAGO, IL 60654
TEL: 312.424.2400 FAX: 312.424.2401



PROJECT: EUREKA! - SANTA CLARA, CA
SANTA CLARA SQUARE MARKET PLACE

REVISIONS:		
#	DATE	DESCRIPTION
07.05.2019		SCHEMATIC DOCUMENTS
07.11.2019		HEALTH DEPT. SUBMITTAL

SHEET TITLE:

COVERSHEET

SHEET NO:

A000

SITE MAP



PROJECT DATA

APPLICABLE CODES & REGULATIONS:
BUILDING CODE: 2016 CALIFORNIA BUILDING CODE
FIRE CODE: 2016 CALIFORNIA FIRE CODE
PLUMBING CODE: 2016 CALIFORNIA PLUMBING CODE
ELECTRICAL CODE: 2016 CALIFORNIA ELECTRICAL CODE
MECHANICAL CODE: 2016 CALIFORNIA MECHANICAL CODE
ENERGY CODE: 2016 CALIFORNIA ENERGY CODE
OTHER: 2016 CALIFORNIA GREEN BUILDING STANDARDS CODE
CALIFORNIA HEALTH AND SAFETY CODE: PART 7

CODE CLASSIFICATION:
A. OCCUPANCY GROUP: A-2 ASSEMBLY (RESTAURANT AND BAR)
B. CONSTRUCTION CLASSIFICATION: III-B
C. AUTOMATIC FIRE SUPPRESSION SYSTEM INSTALLED: YES

TOTAL AREA: 3,382 SQ. FT.

OUTDOOR PATIO AREA: 653 SQ. FT.

TRAVEL DISTANCE:
ALLOWED TRAVEL DISTANCE: (250'-0" MAX.)
ACTUAL TRAVEL DISTANCE:

OCCUPANT LOAD: (SEE A003 FOR CALCULATIONS)

PROJECT DESCRIPTION

THE SCOPE OF WORK INCLUDES A TENANT IMPROVEMENT FOR A NEW RESTAURANT AND BAR IN AN EXISTING BUILDING LOCATED IN SANTA CLARA, CA.

DEFERRED SUBMITTALS:

- A. SIGNAGE
- B. SPRINKLER SHOP DRAWINGS
- C. FIRE ALARM DRAWINGS

SEATING COUNT:

INTERIOR DINING:	98 SEATS
INTERIOR BAR:	16 SEATS
TOTAL INTERIOR:	114 SEATS
EXTERIOR BAR:	06 SEATS
EXTERIOR PATIO:	46 SEATS
TOTAL EXTERIOR:	52 SEATS
TOTAL SEATS:	166 SEATS

PROJECT CONTACTS

EUREKA!
DAVID PETERS
12101 SOUTH CRENSHAW BLVD SUITE 400
HAWTHORNE, CALIFORNIA 90250
310.913.1584

ARCHITECT:
NORR
325 NORTH LASALLE, SUITE 500
CHICAGO, ILLINOIS 60654
312.424.2400

CONTACT: BRYAN SLONSKI
BRYAN.SLONSKI@NORR.COM
312.873.1018

STRUCTURAL ENGINEER:
DUNAWAY ASSOCIATES
CONTACT: MIKE CARRELL
5121 BEE CAVE ROAD, SUITE 105
AUSTIN, TX 78746
PHONE: (512) 306-8252
EMAIL:
MCARRELL@DUNAWAYASSOCIATES.COM

MECHANICAL ENGINEER:
CRO ENGINEERING GROUP, INC.
18652 FLORIDA STREET, SUITE 100
HUNTINGTON BEACH, CA 92648

CONTACT: CONRAD ORR
(714) 847-7100, x1001 DIRECT
(714) 841-6000 FAX
(949) 929-0899 CELL
CONRAD@CROEG.COM

KITCHEN DESIGNER:
AVANTI RESTAURANT SOLUTIONS, INC.
620 COOLIDGE DRIVE #185
FOLSOM, CA 95630

DESIGN CONTACT:
KYLE YAMAMOTO
KYAMAMOTO@AVANTICORPORATE.COM
916.378.0272

PROJECT MANAGER:
JENN POLLACK
916.378.0336 DIRECT
916.261.0271 CELL
JPOLLACK@AVANTICORPORATE.COM

EXPERIMENTAL:
JARED TAYLOR
GOLDEN PROPERTY DEVELOPMENT LLC
805.440.7537
JARED@GOLDENPD.COM

VENDOR CONTACTS

VENDOR CONTACTS

IMPERIAL TILE & STONE
CONTACT: CATHY SHRIGER
818-299-7789
WWW.BMOSAICS.COM

DALTILE
WWW.DALTILE.COM

QUESTMARK
CONTACT: BRYCEN RIBORDY
602-697-7635 CELL
623-207-8903 DIRECT
BRYCEN.RIBORDY@CENTIMARK.COM
WWW.QUESTMARKFLOORING.COM

BENJAMIN MOORE
WWW.BENJAMINMOORE.COM

WILSON ART
WWW.WILSONART.COM

CAMBRIA
CONTACT: KELLY CAMPISI
310-265-3489
KELLY.CAMPISI@CAMBRIAUSA.COM

JOHNSONITE
CONTACT: BUTLER JOHNSON OR JON JOHNSON
408-347-3241 OR 800-776-2167
WWW.PROFESSIONALPLASTICS.COM

JBI INTERIORS
CONTACT: ALEXANDER KLAUSER
310-561-5979

RESTORATION HARDWARE CONTRACT
626-375-0067

CISCO HOME
WWW.CISCOHOME.NET

HUBBARDTON FORGE
800-826-4766
WWW.HUBBARDTONFORGE.COM

VENDOR CONTACTS (CONT)

BROTHERS OF INDUSTRY
CONTACT: PETER HERNANDEZ
805-698-0614 CELL
805-684-2918 OFFICE
ANDREW@BROTHERSOFINDUSTRY.COM

E & K VINTAGE WOOD
310-306-6900
WWW.EANDKWOOD.COM

TORZO SUSTAINABLE SURFACES
WWW.TORZOSURFACES.COM

ACDO
ACDO.ES

HILITE MFG CO., INC.
800-465-1999
WWW.HILITEMFG.COM

CONTRACT FURNITURE COMPANY
CONTACT: CARRY OR GEORGE
800-507-1785
WWW.CONTRACTFURNITURE.COM

MAJILITE
CONTACT: SARI POLINGER
978-441-6800 OFFICE
310-383-0694 DIRECT
SARI@SARIPOLINGER.COM

TRANE
CONTACT: CHRIS ST. JOHN
407-325-7123 MOBILE
407-660-0303 FAX
CSSTJOHN@TRANE.COM

ARIZONA TILE
CONTACT: ED AHRENS
562-896-2832
EAHRENS@ARIZONATILE.COM

TILE BAR
888-541-3840
TILEBAR.COM

GENERAL NOTES:

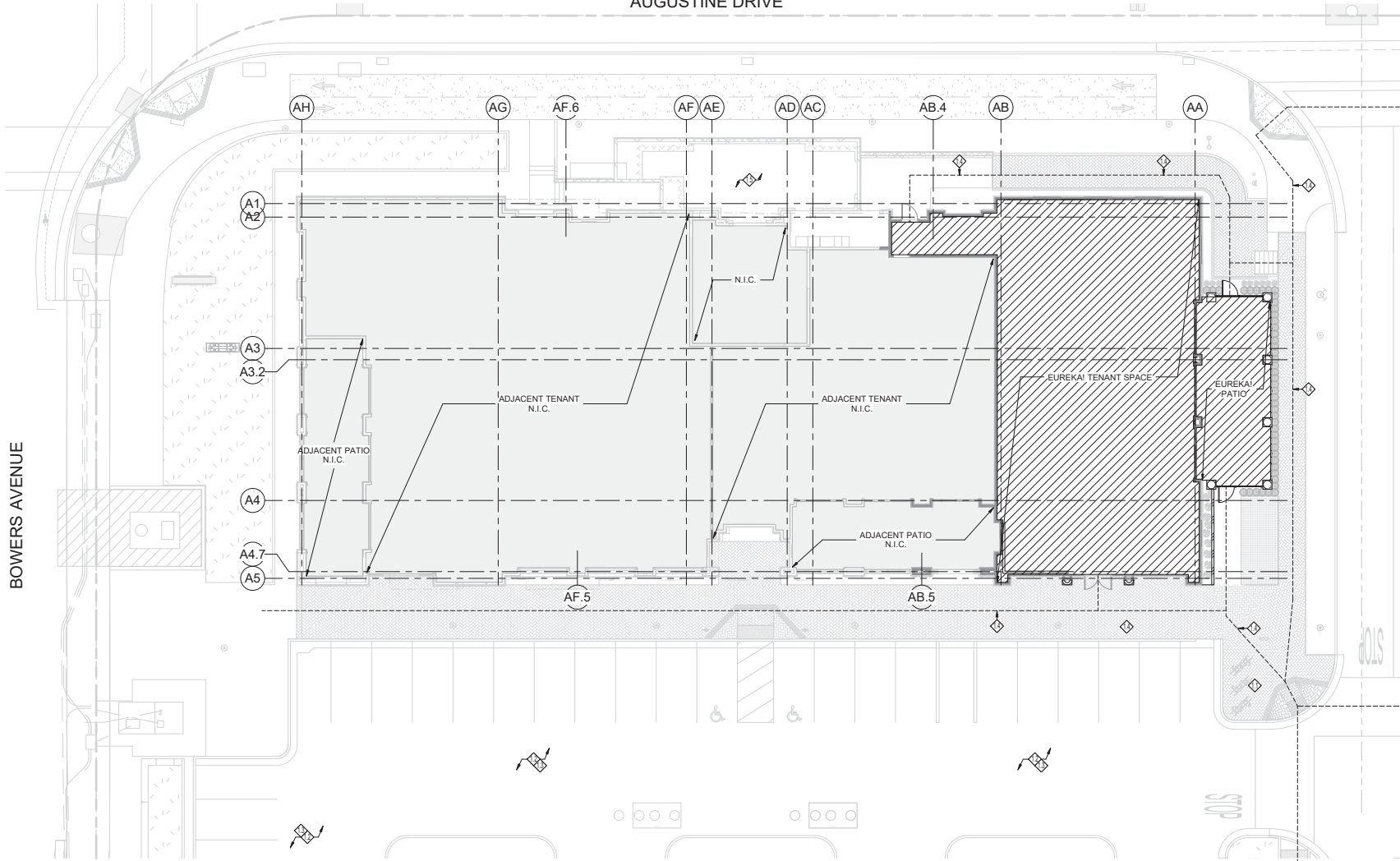
- PROVIDE APPROVED SIGNS OR OTHER APPROVED NOTICES OR MARKINGS THAT INCLUDE THE WORDS "NO PARKING, FIRE LANE". SIGNS SHALL HAVE A MINIMUM DIMENSION OF 12 INCHES WIDE BY 18 INCHES HIGH AND HAVE RED LETTERS ON A WHITE REFLECTIVE BACKGROUND. SIGNS SHALL BE PROVIDED FOR FIRE APPARATUS ACCESS ROADS, TO CLEARLY INDICATE THE ENTRANCE TO SUCH ROAD, OR PROHIBIT THE OBSTRUCTION THEREOF AND AT INTERVALS, AS REQUIRED BY THE FIRE INSPECTOR. FIRE CODE 503.3
- APPROVED BUILDING ADDRESS NUMBERS, BUILDING NUMBER, OR APPROVED BUILDING IDENTIFICATION SHALL BE PROVIDED AND MAINTAINED SO AS TO BE PLAINLY VISIBLE AND LEGIBLE FROM THE STREET FRONTING THE PROPERTY. THE NUMBERS SHALL CONTRAST WITH THEIR BACKGROUND, BE ARABIC NUMERALS OR ALPHABET LETTERS, AND BE A MINIMUM OF 4 INCHES HIGH WITH A MINIMUM STROKE WIDTH OF .3 INCH. FIRE CODE 505.1
- AN APPROVED KEY BOX, LISTED IN ACCORDANCE WITH UL 1037 SHALL BE PROVIDED AS REQUIRED BY FIRE CODE 506. THE LOCATION OF EACH KEY BOX SHALL BE DETERMINED BY THE FIRE INSPECTOR.
- EGRESS DOORS SHALL BE READILY OPENABLE FROM THE EGRESS SIDE WITHOUT THE USE OF A KEY OR ANY SPECIAL KNOWLEDGE OR EFFORT. BUILDING CODE 1008.1.6
- EACH DOOR IN A MEANS OF EGRESS FROM A GROUP A OR ASSEMBLY AREA NOT CLASSIFIED AS AN ASSEMBLY OCCUPANCY, HAVING AN OCCUPANT LOAD OF 50 OR MORE SHALL NOT BE PROVIDED WITH A LATCH OR LOCK UNLESS IT IS PANIC HARDWARE OR FIRE EXIT HARDWARE. BUILDING CODE 1008.1.10; FIRE CODE 1008.1.10
- THE MAXIMUM SLOPE OF THE PARKING SURFACE AT THE ACCESSIBLE SPACE AND ADJACENT ACCESS AISLE, IN ANY DIRECTION, IS ≤ 1.48 PER SECTION 11B-902.4
- ACCESSIBLE PARKING SPACES ARE TO BE IDENTIFIED BY A REFLECTORIZED SIGN, PERMANENTLY POSTED IMMEDIATELY ADJACENT TO AND VISIBLE FROM EACH SPACE, CONSISTING OF:
 - A PROFILE VIEW OF A WHEELCHAIR WITH OCCUPANT IN WHITE ON DARK BLUE BACKGROUND
 - THE SIGN SHALL > 70 IN 2 IN AREA.

- WHEN IN THE PATH OF TRAVEL THEY SHALL BE POSTED $\geq 80"$ FROM THE BOTTOM OF THE SIGN TO PARKING SPACE FINISHED GRADE
- SIGNS MAY ALSO BE CENTERED ON THE WALL OF THE INTERIOR END OF THE PARKING SPACE
- VAN ACCESSIBLE SPACES SHALL HAVE AN ADDITIONAL SIGN "VAN ACCESSIBLE" MOUNTED BELOW THE SYMBOL OF ACCESSIBILITY
- IN ADDITION, THE SURFACE OF EACH ACCESSIBLE SPACE IS REQUIRED TO BE MARKED WITH THE INTERNATIONAL SYMBOL OF ACCESSIBILITY
- AN ADDITIONAL SIGN SHALL ALSO BE POSTED IN A CONSPICUOUS PLACE AT EACH ENTRANCE TO OFF STREET PARKING FACILITIES, OR IMMEDIATELY ADJACENT TO AND VISIBLE FROM EACH STALL OR SPACE. SECTION 11B-902.8.2. THE SIGN SHALL BE: 17" X 22" WITH LETTERING NOT $\leq 1"$ IN HEIGHT. PER SECTION 1129B.4 REQUIRED WORDING IS AS FOLLOWS: "UNAUTHORIZED VEHICLES PARKED IN DESIGNATED ACCESSIBLE SPACES NOT DISPLAYING DISTINGUISHING PLACARDS OR LICENSE PLATES ISSUED FOR PERSONS WITH DISABILITIES MAY BE TOWED AWAY AT OWNER'S EXPENSE. TOWED VEHICLES MAY BE RECLAIMED AT _____ OR BY TELEPHONING _____"
- ALL PROPERTY LINES, EASEMENTS, AND BUILDING, EXISTING AND PROPOSED ARE SHOWN ON THIS SITE PLAN. ALL SITE DESIGN & ELEMENTS ARE EXISTING. PLAN IS INCLUDED FOR REFERENCE ONLY.

KEYED NOTES:

1.1	EXISTING BIKE RACK TO REMAIN.
1.2	EXISTING PARKING TO REMAIN.
1.3	EXISTING LANDSCAPING IS TO REMAIN.
1.4	EXISTING ACCESSIBLE PATH OF TRAVEL FROM ROW TO ACCESSIBLE PARKING AND PRIMARY BUILDING ENTRANCES IF $< 7'$ MIN. WIDTH (MIN. 0.4% MAX. SLOPE, 1.5% MAX. CROSS SLOPE)
1.5	EXISTING DUMPSTER TO REMAIN.

AUGUSTINE DRIVE



① SITE PLAN
3/32\" = 1'-0"

Eureka!
Eat · Drink · American

ENGINEERS:

ARCHITECT:

NORR
325 N. LAUREL ST. SUITE 100 (P.O. BOX 1) SANTA CLARA, CA 95050
TEL: 408.298.1111 FAX: 408.298.1112



PROJECT:
EUREKA! - SANTA CLARA, CA
SANTA CLARA SQUARE
MARKET PLACE

REVISIONS:

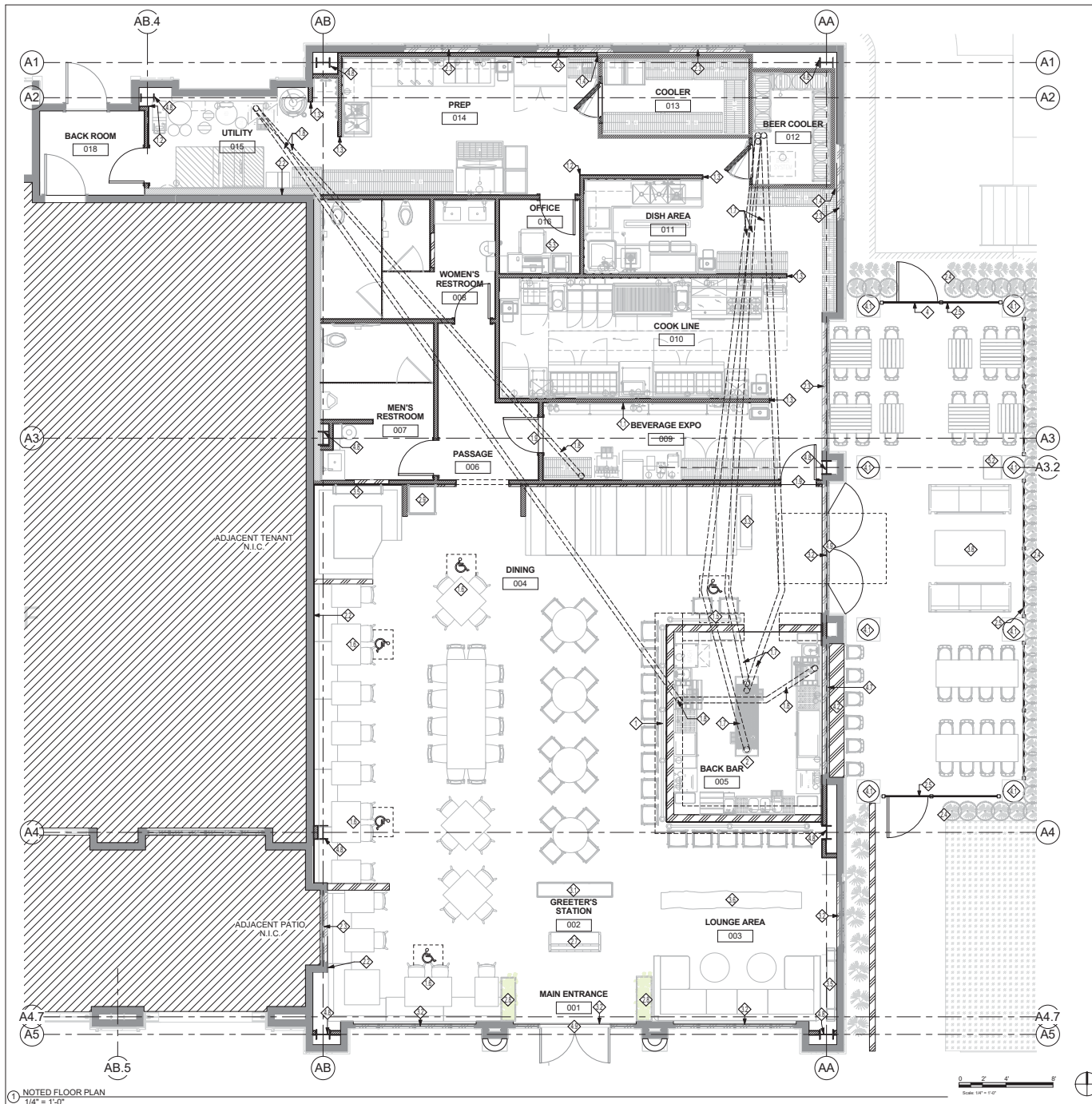
#	DATE	DESCRIPTION
07/03/2019	07/03/2019	SCHEMATIC DOCUMENTS
07/11/2019	07/11/2019	FINAL TH DEPT SUBMITTAL

SHEET TITLE:

SITE PLAN

SHEET NO:

A010



1. NOTED FLOOR PLAN
1/4" = 1'-0"

GENERAL NOTES:

- GC TO PROVIDE BLOCKING FOR SUPPORT OF RESTROOM AND CASEWORK ACCESSORIES AS RECOMMENDED BY MANUFACTURER. SEE ENLARGED RESTROOM AND CASEWORK ELEVATIONS OCCUPANCY LOAD SIGN SUPPLIED & INSTALLED BY GC.
- GC SHALL SUPPLY & INSTALL RECESSED FIRE EXTINGUISHERS AS REQUIRED BY LOCAL CODES. LOCATION PER LOCAL CODES.
- REFERENCE THE FOLLOWING SHEETS: A001 GENERAL NOTES, ABBREVIATIONS, & SYMBOLS; A002 ACCESSIBILITY GUIDELINES.
- ALL DIMENSIONS ARE NOTED FROM FACE OF DRYWALL TO FACE OF DRYWALL, UNO.
- ELECTRICAL EQUIPMENT BY GC. SEE ELECTRICAL DRAWINGS.
- PLUMBING EQUIPMENT BY GC. SEE PLUMBING DRAWINGS.
- ALL CONSTRUCTION MUST BE PERFORMED WITHOUT ANY PENETRATION OF STOREFRONT IN ANY WAY, INCLUDING, BUT NOT LIMITED TO, SCREWS, BOLTS, AND DRILLING.
- PROVIDE 2" AIR SPACE AT SIDES OF COOLER. VERIFY ALL DIMENSIONS AND SPECIFICATION WITH VENDOR'S SHOP DRAWINGS. NO FINISH ON BEER COOLER, TAP, AND PRIME ONLY.
- SOUND BATT INSULATION TO BE MINIMUM CLASS 2 WITH A FLAME SPREAD RATING OF 25 TO 75.
- IT IS THE RESPONSIBILITY OF THE GC AND TRADES TO FAMILIARIZE THEMSELVES WITH THE EXISTING CONDITIONS PRIOR TO SUBMITTING A BID. COORDINATE, BURY WITH OWNER AND LANDLORD. THE OWNER WILL NOT BE RESPONSIBLE FOR CHANGE ORDERS THAT HAVE BEEN DETERMINED TO RESULT FROM CONDITIONS THAT COULD HAVE BEEN KNOWN PRIOR TO THE START OF CONSTRUCTION.
- CAULK ALL JOINTS BETWEEN MATERIALS.
- DEMISING WALL FRAMING TO BE COMPLETED BY GC, TYP.
- REQUIREMENTS AT DOORS:
 - 12" MAXIMUM HIGH THRESHOLD (ABOVE FLOOR AND LANDING ON BOTH SIDES) AT BUILDING MAIN ENTRY AND EGRESS DOORS.
 - MAXIMUM DOOR OPENING EFFORT OF 5 LBS. AT EXTERIOR AND INTERIOR DOORS.
 - ALL DOORS ARE TO BE EQUIPPED WITH SINGLE EFFORT, NON-GRASP HARDWARE, CENTERED BETWEEN 34" AND 44" AFF.
 - 10" KICKPLATE AT BOTTOM OF GLAZED DOORS (MAIN ENTRY AND EGRESS DOORS).

KEYED NOTES:

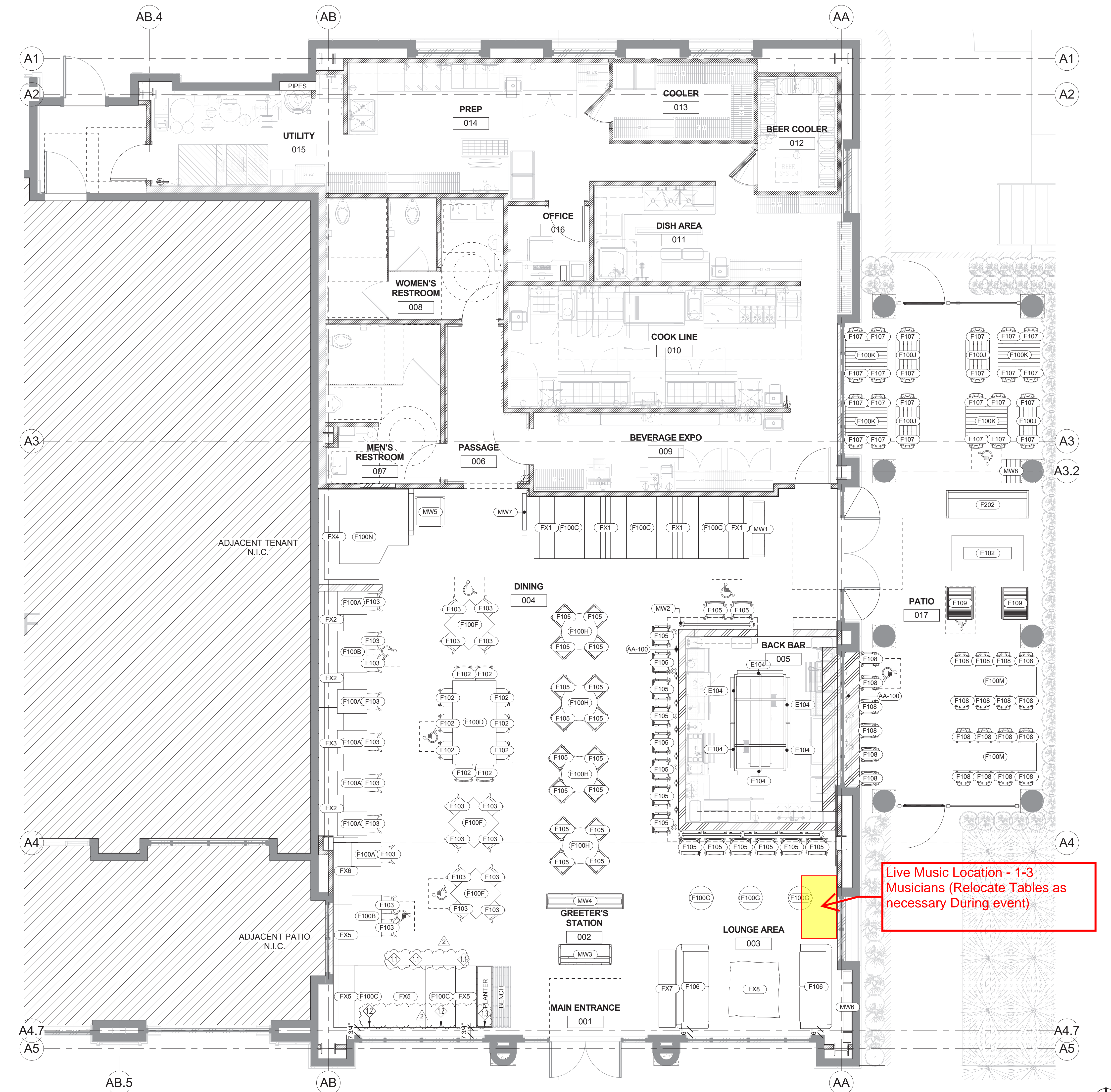
- NEW FOOTRAIL, FURNISHED AND INSTALLED BY JBI. REFER TO DETAILS.
- PASS THROUGH WINDOW. VERIFY DIMENSIONS AND REQUIREMENTS WITH REC DETAILS.
- STAINLESS STEEL CORNER GUARD (16 GA 1-1/2" RETURNS). INSTALL FROM TOP OF TILE TO CEILING. SEE DETAIL 03A700.
- STAINLESS STEEL END CAP (16 GA 1-1/2" RETURNS). INSTALL FROM TOP OF TILE TO CEILING. SEE DETAIL 03A700.
- STAINLESS STEEL CLOSURE, PLATE (16 GA) FROM FLOOR TO CEILING OR BOTTOM OF BULKHEAD.
- ADA BAR TOP.
- PROVIDE CUSTOM ADA TABLE BASE.
- GC TO RUN BEER LINE UNDERSLAB FROM BEER COOLER TO BEER TAPS. CONFIRM ROUTING WITH BEER VENDOR.
- GC TO RUN SODA LINES UNDERGROUND AND THROUGH BAR DIE WALL FROM BAG IN BOX TO SODA MACHINE. CONFIRM ROUTING WITH SODA VENDOR.
- KITCHEN DOORS MUST BE TIGHT-FITTING, SELF-CLOSING AND VERMIN PROOF. 1/4" MAX. GAP AT THE BASE.
- NEW BACK BAR CASEWORK, FURNISHED AND INSTALLED BY JBI. REFER TO DETAILS.
- EXISTING TENANT DEMISING WALL.
- CONTRACTOR IS TO CLEAN ALL WINDOWS, SHADES, CAVITY AREA FROM CONSTRUCTION DUST AND DEBRIS PRIOR TO ENCLOSING EXTERIOR WINDOWS. STANDARD BLACKOUT FILM TO BE APPLIED TO GLAZING.
- NEW PATIO PLANTER.
- NEW PATIO FENCE AND RAILING TO REMAIN.
- NEW GRIETTER STATION, FURNISHED AND INSTALLED BY JBI.
- NEW PLANTERS TO BE PROVIDED BY OWNER.
- NEW AV CABINET FURNISHED AND INSTALLED BY JBI. BLUE LED LIGHT PROVIDED BY OWNER, INSTALLED BY GC. REFER TO ELECTRICAL FOR CIRCUIT INFORMATION.
- NEW TOLGO PICKUP SHELVING WITH LIQUOR CABINET ABOVE DISPLAY FURNISHED AND INSTALLED BY JBI. REFER TO DETAILS.
- EXISTING STOREFRONT TO REMAIN.
- NEW HOST STATION FURNISHED AND INSTALLED BY JBI. REFER TO DETAILS.
- NEW WALL SHELVING FURNISHED AND INSTALLED BY JBI. REFER TO DETAILS.
- NEW DRINK RAIL FURNISHED AND INSTALLED BY JBI. REFER TO DETAILS.
- NEW PATIO FIRE FEATURE.
- NEW PATIO GATE. REFER TO DETAILS FOR MORE INFORMATION.
- EXISTING EXTERIOR COLUMNS TO REMAIN.
- NEW EXTERIOR BAR TOP.
- EXISTING MOVABLE STOREFRONT TO REMAIN.
- EXISTING COLUMNS TO REMAIN AND TO BE FINISHED IN MATTE BLACK.
- DOORS MUST BE TIGHT-FITTING, SELF-CLOSING AND VERMIN PROOF. 1/4" MAX. GAP AT THE BASE.
- NEW OUTDOOR STORAGE CART, PROVIDED BY JBI.
- OWNER PROVIDED SAFE AND PRINTER. PRINTER TO HAVE POWER AND DATA CONNECTION.

SYMBOLS LEGEND:

	NEW WALLS		LIGHT FIXTURE
	COUNTER TOP		SECTION MARK
	DIMENSION LINE		WALL TYPE
	ELEVATION MARK		WALL BEYOND
	EXISTING CONDITIONS		
	FINISH		
	FURNITURE		
	KEYED NOTE		
	PARTIAL HEIGHT WALL		

PARTITIONS LEGEND:

	INTERIOR PARTITIONS
	PARTIAL HEIGHT WALLS
	EXISTING CONDITIONS
	FREEZER/COOLER WALLS
	EXISTING 1-HOUR U419 RATED DEMISING WALL BY LANDLORD
	INTERIOR PARTITION WITH SOUND BATT INSULATION



1 FURNITURE & MILLWORK FLOOR PLAN
1/4" = 1'-0"

GENERAL NOTES:

- REFER TO A400 FOR RESTROOM FIXTURES AND ACCESSORIES.
- ALL WOOD BLOCING FOR WALL MOUNTED EQUIPMENT TO BE LOCATED WITHIN WALL CAVITY
- SEE KITCHEN DRAWINGS FOR EQUIPMENT PLAN AND SCHEDULE. REFERENCE DETAILS FOR MILLWORK PROVIDED ON SHEETS A600, A601, & A602
- GC TO CAULK ALL JOINTS BETWEEN MILLWORK & ADJACENT SURFACES.
- FILL ALL NAIL HOLES
- IT IS THE RESPONSIBILITY OF THE GC AND TRADES TO FAMILIARIZE THEMSELVES WITH THE EXISTING CONDITIONS PRIOR TO SUBMITTING A BID. COORDINATE SURVEY WITH OWNER AND LANDLORD. THE OWNER WILL NOT BE RESPONSIBLE FOR CHANGE ORDERS THAT HAVE BEEN DETERMINED TO RESULT FROM CONDITIONS THAT COULD HAVE BEEN KNOWN PRIOR TO THE START OF CONSTRUCTION.

KEYED NOTES:

- BOOTH SEATS LOCATED AT THE STOREFRONT MUST HAVE END CAPS ON BOTH OPENING SIDE AND OUTSIDE BACKS MADE OF A DURABLE MATERIAL THAT WILL CREATE A FINISH LOOK AT THE WINDOW LINE. FINISH ALL TO MATCH FURNITURE FINISH.
- BOOTH TABLES MUST INCLUDE 6" BACKSPLASH AT THE GLASS LINE TO SHIELD TABLE TOP CONDMENTS FROM EXTERIOR VIEW, AS WELL AS PROTECT THE WINDOW FROM POTENTIAL DEBRIS. FINISH ALL TO MATCH FURNITURE FINISH. PLEASE SEE DETAIL DRAWING ON SHEET A700.
- PLANTER LOCATED AT THE STOREFRONT TO HAVE END CAPS AND FINISH ALL TO MATCH.

SYMBOLS LEGEND:

- | | | | |
|--|---------------------|--|---------------------|
| | NEW WALLS | | KEYED NOTE |
| | COUNTER TOP | | PARTIAL HEIGHT WALL |
| | DIMENSION LINE | | LIGHT FIXTURE |
| | ELEVATION MARK | | SECTION MARK |
| | EXISTING CONDITIONS | | WALL TYPE |
| | FINISH | | WALL BEYOND |
| | FURNITURE | | |

PARTITIONS LEGEND:

- | | |
|--|--|
| | INTERIOR PARTITIONS |
| | PARTIAL HEIGHT WALLS |
| | EXISTING CONDITIONS |
| | FREEZER/ COOLER WALLS |
| | EXISTING 1-HOUR U419 RATED DEMISING WALL BY LANDLORD |
| | INTERIOR PARTITION WITH SOUND BATT INSULATION |

Eureka!
Eat · Drink · American

DUNAWAY UDS
507 S. Bascom Avenue, Suite 250, San Jose, CA 95128
Tel: 408.286.8252 • Fax: 408.286.8253

ENGINEERS:
CRO
CRO ENGINEERING GROUP, INC.
1000 California Street, Suite 1000, San Francisco, CA 94109
Tel: 415.774.1200 • Fax: 415.774.1201

ARCHITECT:
NORR
235 N. LaSalle St., Suite 900 | Chicago, IL 60604
312.467.4200 | 312.467.4201 | norrarchitect.com

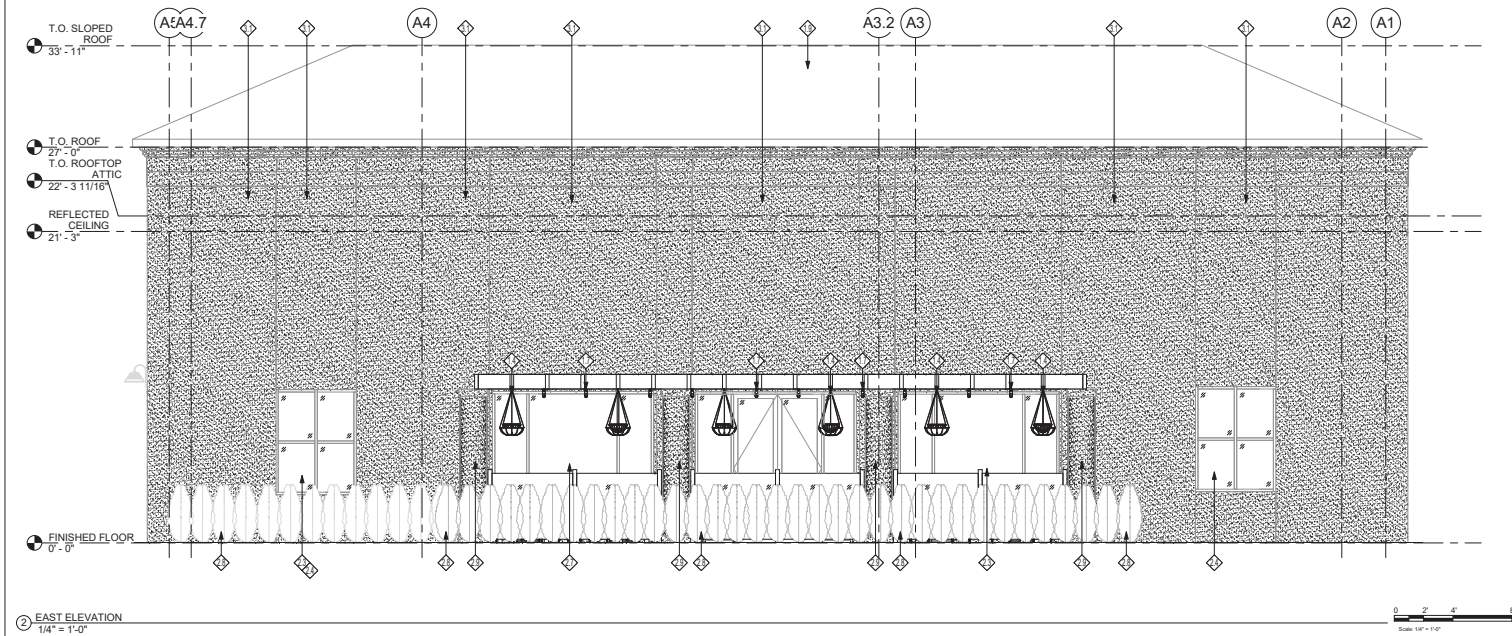
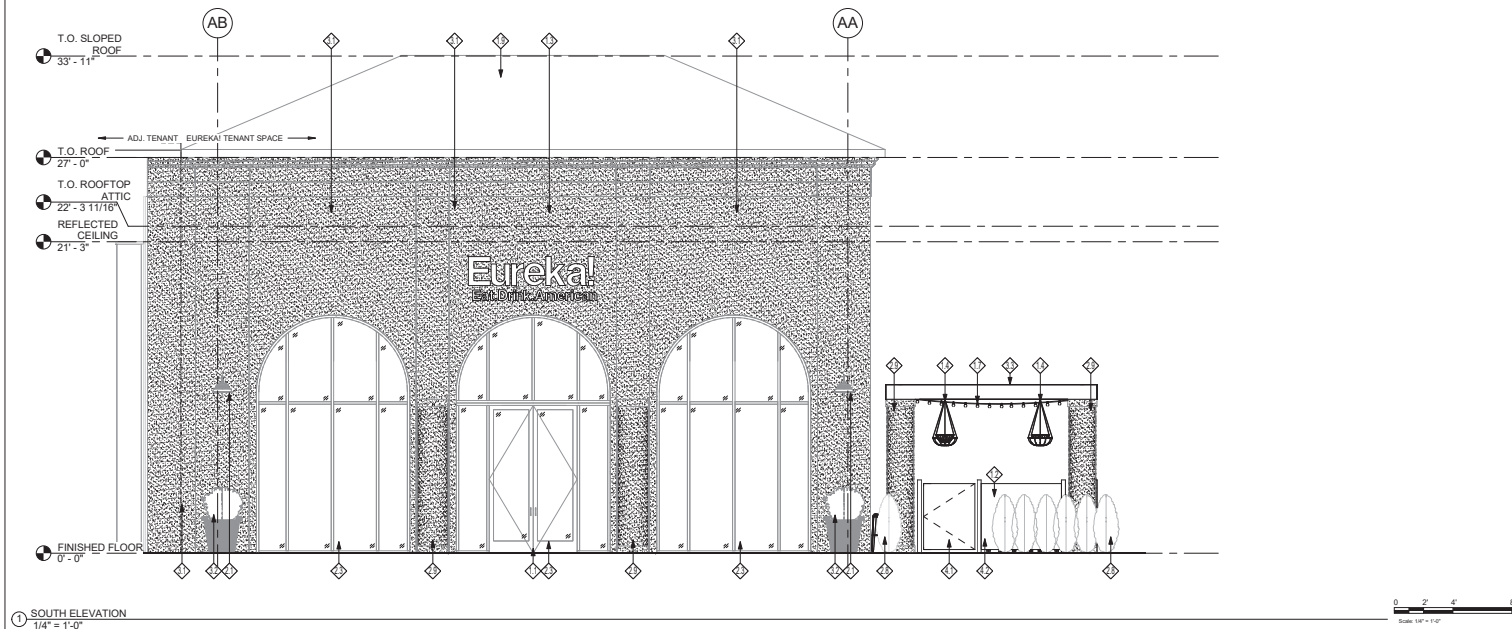
LICENSED ARCHITECT
GEORGE SAM PHILLIPS-SORICH
NO. C-31078
08 - 31 - 2019
RENEWAL DATE
George Sam Phillips-Sorich

PROJECT:
EUREKA! - SANTA CLARA, CA
2762 AUGUSTINE DRIVE
SUITE 120
SANTA CLARA, CA 95054

REVISIONS:		
#	DATE	DESCRIPTION
	07.05.2019	SCHEMATIC DOCUMENTS
	07.11.2019	HEALTH DEPT. SUBMITTAL
	08.15.2019	DESIGN DEVELOPMENT
	08.30.2019	PERMIT DOCUMENTS
1	09.23.2019	HEALTH DEPT. RESUBMITTAL
2	10.17.2019	PERMIT RESUBMITTAL

SHEET TITLE:
FURNITURE & MILLWORK FLOOR PLAN

SHEET NO.:
A102



GENERAL NOTES:

- ALL SIGNAGE TO COMPLY WITH ALL TENANT DESIGN CRITERIA
- ALL NEW STOREFRONT GLASS TO HAVE DARK TINT; CONFIRM SPECIFICATION WITH OWNER
- IT IS THE RESPONSIBILITY OF THE GC AND TRADES TO FAMILIARIZE THEMSELVES WITH THE EXISTING CONDITIONS PRIOR TO SUBMITTING A BID. COORDINATE SURVEY WITH THE OWNER AND LANDLORD. THE OWNER WILL NOT BE RESPONSIBLE FOR CHANGE ORDERS THAT HAVE BEEN DETERMINED TO RESULT FROM CONDITIONS THAT COULD HAVE BEEN KNOWN PRIOR TO THE START OF CONSTRUCTION.
- ANY NON-ILLUMINATED AND/OR ILLUMINATED SIGNAGE CANNOT BE PLACED AT THE INSIDE OF STOREFRONT SYSTEM WITHIN THE PREMISE. SIGNAGE MUST BE INSTALLED AT LEAST 3'-0" OFF THE INSIDE OF THE STOREFRONT SYSTEM.

KEYED NOTES:

- MAIN ENTRY: CUSTOM PULLS FURNISHED BY JBL, INSTALLED BY GC.
- NEW PATIO FURNITURE: TYP. REFER TO FURNITURE SCHEDULE.
- NEW BACKLIT ACRYLIC SIGN: FURNISHED AND INSTALLED BY SIGNAGE VENDOR. GC TO PROVIDE NECESSARY BLOCKING AND ACCESS PANELS. SIGNAGE UNDER SEPARATE PERMIT.
- NEW PATIO HANGING PLANTER: TYP. BY EUREKA!
- NEW PATIO STRING LIGHTING: TYP. REFER TO LIGHTING SCHEDULE.
- NEW PATIO FIRE FEATURE: REFER TO DETAILS.
- EXISTING CLAY TILE ROOF.
- EXISTING EXTERIOR LIGHTING.
- EXISTING STOREFRONT TO REMAIN. BLACK-OUT GLASS, TINTING, OR PAINTING OF STOREFRONT ARE NOT APPROVED OPTIONS. TENANT TO USE MECHOSHADE: EUROTWILL 6000 SERIES COLOR 80M SAND FOR SUN CONTROL.
- EXISTING GLAZING.
- OPERABLE STOREFRONT TO REMAIN.
- EXISTING DOOR.
- MOVABLE STOREFRONT.
- LANDLORD TO PROVIDE ALL NEW PATIO/EXTERIOR LANDSCAPING PER LANDLORD WORK PLANS.
- EXISTING EXTERIOR COLUMN TO REMAIN.
- EXISTING FACADE TO REMAIN.
- EXISTING PLANTER.
- NEW PATIO TRELLIS.
- PATIO GATE: INSTALLED BY LANDLORD. REMAIN AS IS.
- PATIO RAILING: INSTALLED BY LANDLORD. REMAIN AS IS.

Eureka!
Eat · Drink · American

DUNAWAY LLC
ARCHITECTS
1331 4th Street, Suite 100, Santa Clara, CA 95054
(408) 281-1111

CR
CONSTRUCTION
1331 4th Street, Suite 100, Santa Clara, CA 95054
(408) 281-1111

NORR
ARCHITECTS
320 N. Market St., Suite 100, Santa Clara, CA 95054
(408) 281-1111

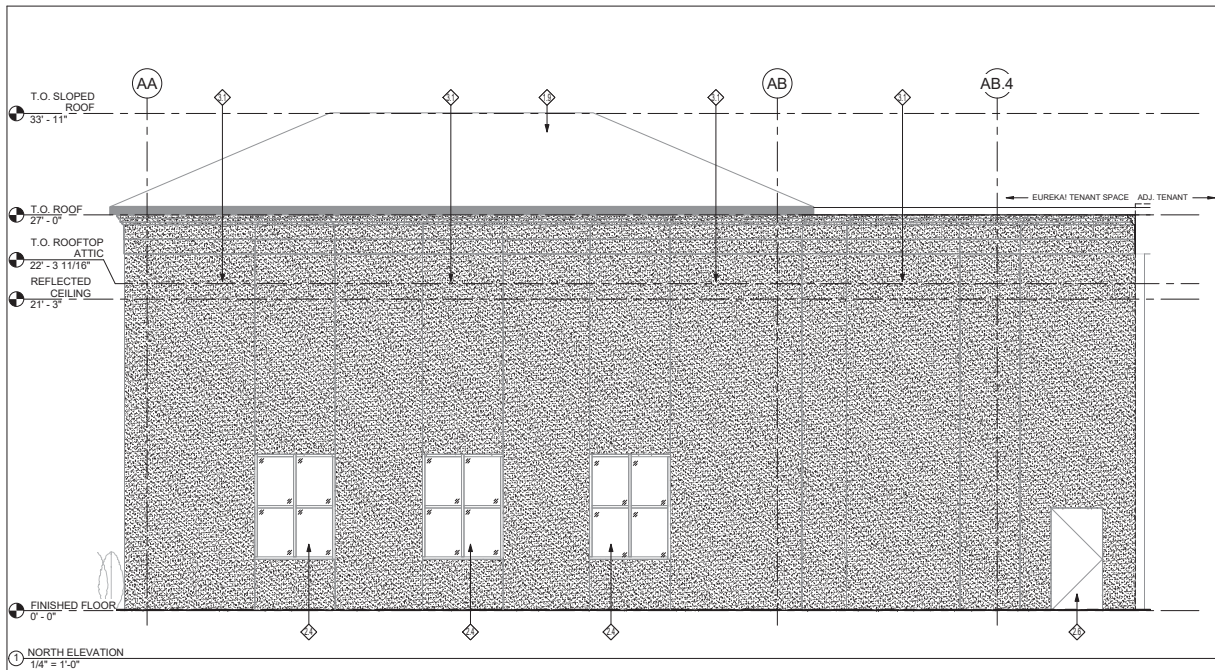
LICENSED ARCHITECT
NORR ARCHITECTS
NO. C-31078
SANTA CLARA COUNTY, CALIFORNIA
Jeffrey J. Norr

PROJECT:
EUREKA! - SANTA CLARA, CA
2782 AUGUSTINE DRIVE
SANTA CLARA, CA 95054

#	DATE	DESCRIPTION
07-05-2019	SCHEMATIC	
07-11-2019	DOCUMENTS	
	SUBMITTAL	

SHEET TITLE:
EXTERIOR ELEVATIONS

SHEET NO:
A050



GENERAL NOTES:

- A. ALL SIGNAGE TO COMPLY WITH ALL TENANT DESIGN CRITERIA
- B. ALL NEW STOREFRONT GLASS TO HAVE DARK TINT; CONFIRM SPECIFICATION WITH OWNER
- C. IT IS THE RESPONSIBILITY OF THE GC AND TRADES TO FAMILIARIZE THEMSELVES WITH THE EXISTING CONDITIONS PRIOR TO SUBMITTING A BID. COORDINATE SURVEY WITH THE OWNER AND LANDLORD. THE OWNER WILL NOT BE RESPONSIBLE FOR CHANGE ORDERS THAT HAVE BEEN DETERMINED TO RESULT FROM CONDITIONS THAT COULD HAVE BEEN KNOWN PRIOR TO THE START OF CONSTRUCTION.
- D. ANY NON-ILLUMINATED AND/OR ILLUMINATED SIGNAGE CANNOT BE PLACED AT THE INSIDE OF STOREFRONT SYSTEM WITHIN THE PREMISE. SIGNAGE MUST BE INSTALLED AT LEAST 3'-0" OFF THE INSIDE OF THE STOREFRONT SYSTEM.

KEYED NOTES:

- 1.1 MAIN ENTRY: CUSTOM PULLS FURNISHED BY JBL, INSTALLED BY GC.
- 1.2 NEW PATIO FURNITURE, TYP. REFER TO FURNITURE SCHEDULE.
- 1.3 NEW BACKLIT ACRYLIC SIGN: FURNISHED AND INSTALLED BY SIGNAGE VENDOR. GC TO PROVIDE NECESSARY BLOCKING AND ACCESS PANELS. SIGNAGE UNDER SEPARATE PERMIT.
- 1.4 NEW PATIO HANGING PLANTER, TYP. BY EUREKAI.
- 1.7 NEW PATIO STRING LIGHTING, TYP. REFER TO LIGHTING SCHEDULE.
- 1.8 NEW PATIO FIRE FEATURE, REFER TO DETAILS.
- 1.9 EXISTING CLAY TILE ROOF.
- 2.1 EXISTING EXTERIOR LIGHTING.
- 2.3 EXISTING STOREFRONT TO REMAIN. BLACK-OUT GLASS, TINTING, OR PAINTING OF STOREFRONT ARE NOT APPROVED OPTIONS. TENANT TO USE MECHOSHADE: EUROTWILL 6000 SERIES COLOR 80M SAND FOR SUN CONTROL.
- 2.4 EXISTING GLAZING.
- 2.5 OPERABLE STOREFRONT TO REMAIN.
- 2.6 EXISTING DOOR.
- 2.7 MOVABLE STOREFRONT.
- 2.8 LANDLORD TO PROVIDE ALL NEW PATIO/EXTERIOR LANDSCAPING PER LANDLORD WORK PLANS.
- 2.9 EXISTING EXTERIOR COLUMN TO REMAIN.
- 3.1 EXISTING FACADE TO REMAIN.
- 3.3 EXISTING PLANTER.
- 3.3 NEW PATIO TRELLIS.
- 4.1 PATIO GATE: INSTALLED BY LANDLORD. REMAIN AS IS.
- 4.2 PATIO RAILING: INSTALLED BY LANDLORD. REMAIN AS IS.

Eureka!
Eat • Drink • American

DUNAWAY LLC
3000 Camino Del Rio North, Suite 200
San Diego, CA 92108
(619) 594-1100

cro
320 N. LAKE AVE. SUITE 100
SANTA CLARA, CA 95050
(408) 251-1100

ENGINEERS:

ARCHITECT:

NORR
320 N. LAKE AVE. SUITE 100
SANTA CLARA, CA 95050
(408) 251-1100

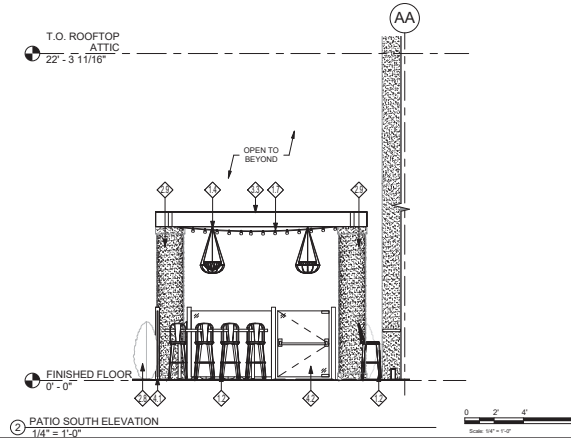
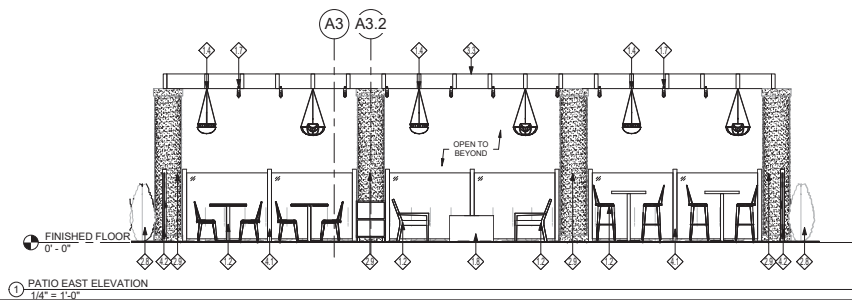
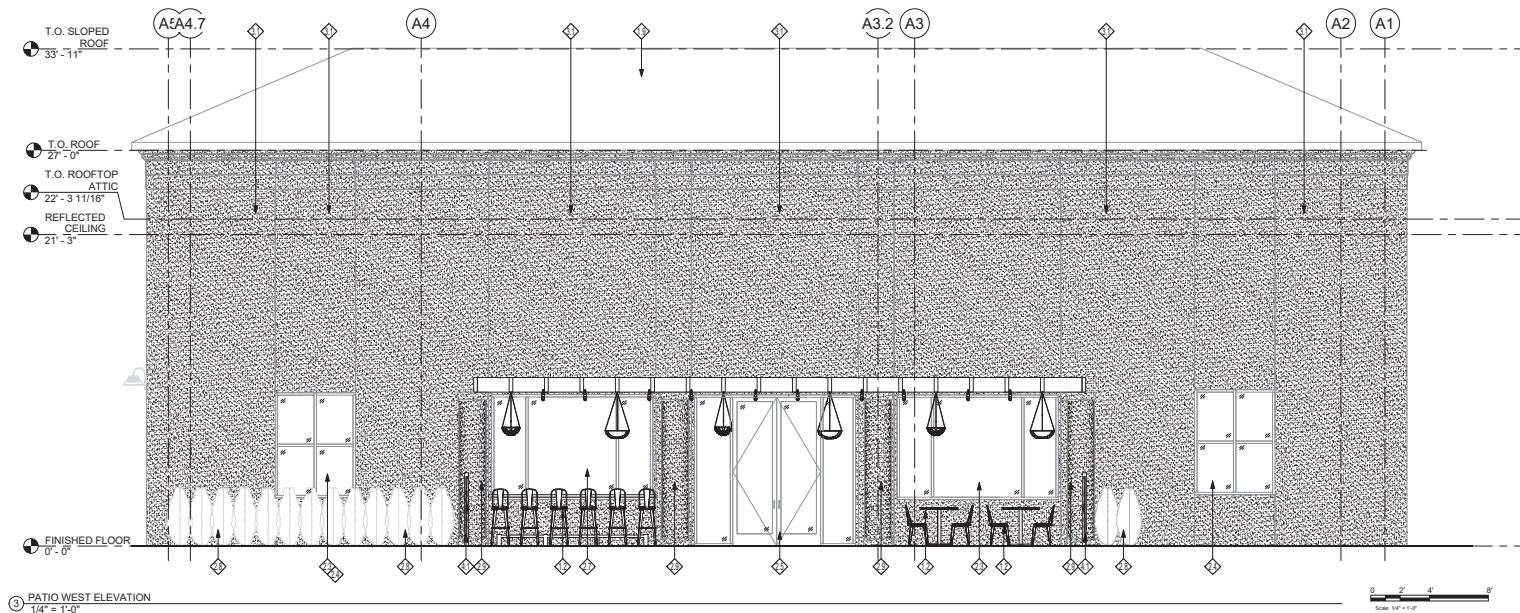
LICENSED ARCHITECT
GEORGE DANIEL PHILLIPS-SORCH
NO. C-31078
SANTA CLARA, CA
George Daniel Phillips-Sorch

PROJECT:
EUREKAI - SANTA CLARA, CA
2782 AUGUSTINE DRIVE
SANTA CLARA, CA 95054

REVISIONS:	
#	DATE DESCRIPTION
07/05/2019	SCHEMATIC DOCUMENTS
07/11/2019	SUBMITTAL

SHEET TITLE:
EXTERIOR ELEVATIONS

SHEET NO:
A050A



GENERAL NOTES:

- ALL SIGNAGE TO COMPLY WITH ALL TENANT DESIGN CRITERIA.
- ALL NEW STOREFRONT GLASS TO HAVE DARK TINT. CONFIRM SPECIFICATION WITH OWNER.
- IT IS THE RESPONSIBILITY OF THE GC AND TRADES TO FAMILIARIZE THEMSELVES WITH THE EXISTING CONDITIONS PRIOR TO SUBMITTING A BID. COORDINATE SURVEY WITH THE OWNER AND LANDLORD. THE OWNER WILL NOT BE RESPONSIBLE FOR CHANGE ORDERS THAT HAVE BEEN DETERMINED TO RESULT FROM CONDITIONS THAT COULD HAVE BEEN KNOWN PRIOR TO THE START OF CONSTRUCTION.
- ANY NON-ILLUMINATED AND/OR ILLUMINATED SIGNAGE CANNOT BE PLACED AT THE INSIDE OF STOREFRONT SYSTEM WITHIN THE PREMISE. SIGNAGE MUST BE INSTALLED AT LEAST 3'-0" OFF THE INSIDE OF THE STOREFRONT SYSTEM.

KEYED NOTES:

- MAIN ENTRY: CUSTOM PULLS FURNISHED BY JBL, INSTALLED BY GC.
- NEW PATIO FURNITURE, TYP. REFER TO FURNITURE SCHEDULE.
- NEW BACKLIT ACRYLIC SIGN, FURNISHED AND INSTALLED BY SIGNAGE VENDOR. GC TO PROVIDE NECESSARY BLOCKING AND ACCESS PANELS. SIGNAGE UNDER SEPARATE PERMIT.
- NEW PATIO HANGING PLANTER, TYP. BY EUREKAI.
- NEW PATIO STRING LIGHTING, TYP. REFER TO LIGHTING SCHEDULE.
- NEW PATIO FIRE FEATURE, REFER TO DETAILS.
- EXISTING CLAY TILE ROOF.
- EXISTING EXTERIOR LIGHTING.
- EXISTING STOREFRONT TO REMAIN. BLACK-OUT GLASS, TINTING, OR PAINTING OF STOREFRONT ARE NOT APPROVED OPTIONS. TENANT TO USE MECHOSHADE: EUROWILL 6000 SERIES COLOR 80M SAND FOR SUN CONTROL.
- EXISTING GLAZING.
- OPERABLE STOREFRONT TO REMAIN.
- EXISTING DOOR.
- MOVABLE STOREFRONT.
- LANDLORD TO PROVIDE ALL NEW PATIO/EXTERIOR LANDSCAPING PER LANDLORD WORK PLANS.
- EXISTING EXTERIOR COLUMN TO REMAIN.
- EXISTING FACADE TO REMAIN.
- EXISTING PLANTER.
- NEW PATIO TRELLIS.
- PATIO GATE INSTALLED BY LANDLORD. REMAIN AS IS.
- PATIO RAILING INSTALLED BY LANDLORD. REMAIN AS IS.

Eureka!
Eat · Drink · American

DUNAWAY LLC
ARCHITECTS
1324 CLAY AVE. #17, SANTA CLARA, CA 95054
(408) 293-1111

ENGINEERS:

cro
CONSULTING ENGINEERS
1324 CLAY AVE. #17, SANTA CLARA, CA 95054
(408) 293-1111

ARCHITECT:

NORR
320 N. CALIF. ST., SUITE 300, SAN JOSE, CA 95134
(408) 435-1111

LICENSED ARCHITECT
GEORGE J. NORR
NO. C-31078
EXPI. 12/31/2024
STATE OF CALIFORNIA

PROJECT:
EUREKA! - SANTA CLARA, CA
2782 AUGUSTINE DRIVE
SANTA CLARA, CA 95054

#	DATE	DESCRIPTION
07/05/2019	SCHEMATIC	
07/11/2019	DOCUMENTS	
	SUBMITTAL	

SHEET TITLE:
EXTERIOR ELEVATIONS

SHEET NO:
A050B