

EXISTING BUILDING CONSTRUCTION:	TYPE II-B, 1-STORY BUILDING, NOT SPRINKLERED
OCCUPANCY OF BUILDING:	B (CAR/TRUCK RENTAL)
DESCRIPTION OF USE:	B (CAR/TRUCK RENTAL), NO CHANGE IN USE
LEGAL DESCRIPTION:	COMMERCIAL
DESCRIPTION OF WORK:	PAINT NEW PARKING STRIPING, ACCESSIBLE PARKING

ARCHITECTURAL  
SHEET A1 - SITE PLAN, FLOOR PLANS AND ELEVATIONS

LANDSCAPE  
SHEET L-1.0 - LANDSCAPE CONSTRUCTION PLAN  
SHEET L-2.0 - LANDSCAPE IRRIGATION PLAN  
SHEET L-2.1 - WELD WORKSHEET  
SHEET L-3.0 - LANDSCAPE PLANTING PLAN  
SHEET L-4.0 - SOIL ANALYSIS REPORT

**PARKING PROVIDED:**  
1 SPACE FOR EVERY 400 S.F. OF FLOOR AREA, AND 1 FOR EVERY 2 EMPLOYEES  
201 (400) = 12.53 = 13 SPACES  
2 EMPLOYEES = 1 SPACE  
TOTAL = 14 SPACES  
50% MAY BE COMPACT (10 x 16)  
STANDARD IS 9' x 16'

**PARKING PROVIDED:**

REGULAR PARKING	- 6 SPACES
COMPACT PARKING	- 7 SPACES
VAN ACCESSIBLE PARKING	- 1 SPACE
TOTAL PARKING	- 14 SPACES

**RENTAL VEHICLE COUNT:**

TRUCKS (24' LONG)	- 12 SPACES
CARS (COMPACT)	- 15 SPACES
TRUCKS (10' LONG)	- 4 SPACES
TRUCKS (11' LONG)	- 4 SPACES
TRUCKS (24' LONG)	- 3 SPACES

<u>BUILDING / SITE INFORMATION:</u>	
LOT SQUARE FOOTAGE	= 0.64 ACRES (27,912 SQ. FT.)
PERCENTAGE OF LOT COVERAGE	10%
EXISTING BUILDING SQUARE FOOTAGE	= 5,011 SQ. FT.
EXISTING/PROPOSED USE	COMMERCIAL (CARTRUCK RENTAL FACILITY)
<u>POSTED LOT VACANT FOR APPROXIMATELY 1 YEAR</u>	
PARKING AREA SQUARE FOOTAGE	= 2,200 SQ. FT.
REQUIRED LANDSCAPING (10% OF PARKING AREA)	= 2,200 SQ. FT.
LANDSCAPING PROVIDED	= 2,319 SQ. FT.

Architectural elevation drawing of the existing east elevation of the building. The drawing shows a two-story structure with a flat roof. The upper story has a central window and two side windows. The lower story has a central entrance and two side windows. The drawing includes dimensions and callouts for various materials and features.

- (1) PAINTED STUCCO, COLOR: LIGHT GRAY, TYP.
- (2) PAINTED STUCCO, COLOR: DARK GRAY, TYP.
- (3) SIGNAGE
- (4) EXTERIOR LIGHT FIXTURE
- (5) EXTERIOR LIGHT FIXTURE
- (6) DECAL SIGNAGE
- (7) STUCCO STUCCO STUCCO

MINIMUM HEIGHT OF 12". COLOR SHALL CONTRAST BACKGROUND MATERIAL.

3 EXISTING EAST ELEVATION  
SCALE: 1/8" = 1'-0"

Architectural elevation drawing of a building facade. The drawing shows a series of vertical panels and windows. Callouts indicate the following details:

- (3) EXTERIOR LIGHT FIXTURE
- (1) PLYWOOD INFILL AT ROLL-UP DOOR OPENING, PAINTED LIGHT GRAY TO MATCH ADJACENT STUCCO
- (1) PAINTED STUCCO, COLOR: LIGHT GRAY, TYP.
- (1) PAINTED STUCCO, COLOR: DARK GRAY, TYP.

4 EXISTING SOUTH ELEVATION  
SCALE: 1/8" = 1'-0"

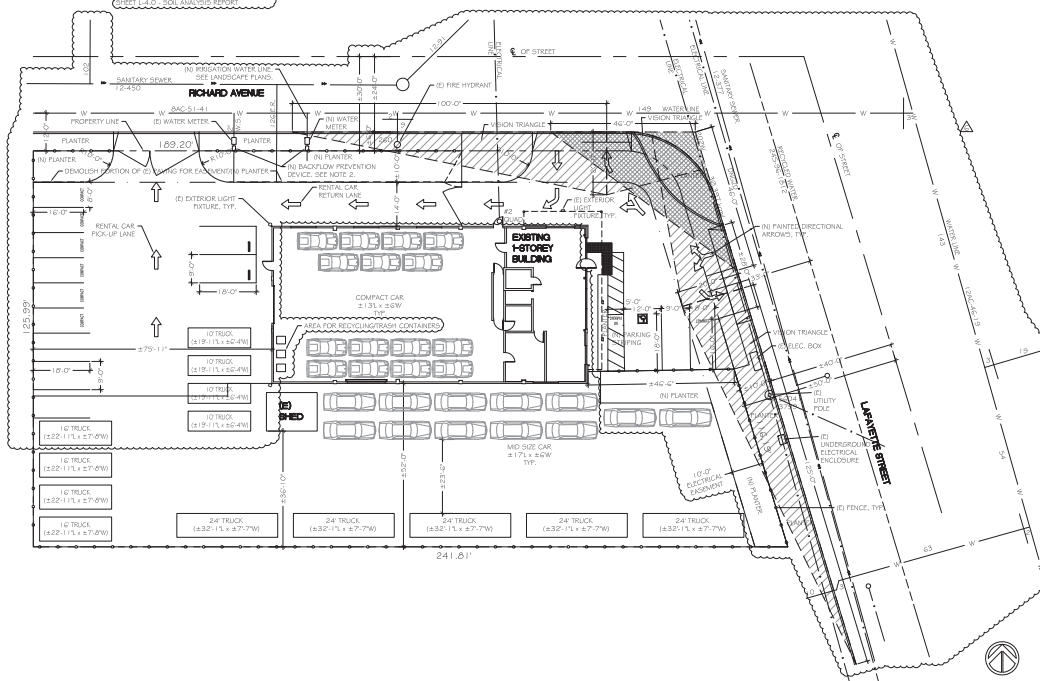
5 EXISTING WEST ELEVATION  
SCALE: 1/8" = 1'-0"

Architectural elevation drawing of a building facade. The drawing includes the following callouts and details:

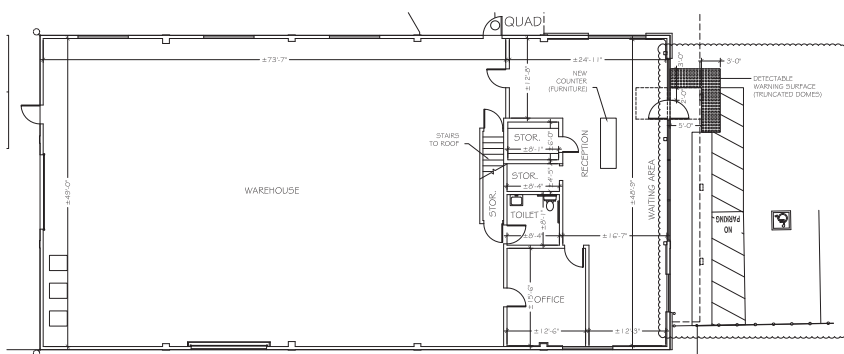
- (1) EXTERIOR LIGHT FIXTURE: Located above the entrance door.
- (2) SIGNAGE: Located above the entrance door.
- (3) PAINTED STUCCO, COLOR: LIGHT GRAY, TYP.: Located on the upper portion of the facade.
- (4) PAINTED STUCCO, COLOR: DARK GRAY, TYP.: Located on the lower portion of the facade.
- (5) EXTERIOR LIGHT FIXTURE: Located on the right side of the facade.
- (6) DECAL SIGNAGE: Located on the left side of the facade.
- (7) STORE VENER SHUT: Located on the left side of the facade.
- PROVIDE (N) WALL-MOUNTED LIGHT FIXTURE FOR EXTERIOR DOOR ILLUMINATION: Located below the entrance door.

6 EXISTING NORTH ELEVATION  
SCALE: 1/8" = 1'-0"

1 SITE PLAN  
SCALE: 1/16" = 1'-0"



2 FLOOR PLAN  
SCALE: 1/8" = 1'-0"

[illegible]

KR  
Design Group

650.525.3700  
11 Twenty-fourth Ave.  
San Mateo, CA 94403


# AVIS BUDGET CAR/TRUCK RENTAL

2390 LAFAYETTE STREET  
SANTA CLARA, CA  
95050



PROPOSED PLAN REVERSED &amp; APPROVED

DATE	
SCALE AS NOTED	DEPTH BY FV
DATE 8/13/18	SQ. FT. ± 4,862 USF
FLOOR FIRST	PROJ. NO. KR/2390LS

REVISIONS		
NO.	DATE/DESCRIPTION	BY
1	8/13/18 - ISSUE FOR REVIEW	FV
2	8/15/18 - UPDATED CLIENT	FV
3	8/16/18 - REDUCED CAR COUNT	FV
4	11/17/18 - ISSUE FOR REVIEW	FV
5	12/11/18 - ISSUE FOR PERMIT	FV
	5/28/19 - REVISIONS PER FCC REVIEW COMMENTS	FV

THIS CAD DOCUMENT IS PROPERTY OF KIRU DESIGN GROUP, INC. LOCATED AT 11 TWENTY-FOURTH AVE., SAN ANTONIO, TEXAS. THIS IS FOR KIRU INTERNAL USE ONLY. INTERNAL AND/OR EXTERNAL USE OF THIS DOCUMENT BY ANY OTHER KIRU REPRESENTATIVE THIS DOCUMENT TO BE FOR INTERNAL USE ONLY UNLESS OTHERWISE SPECIFIED. THE INFORMATION CONTAINED HEREIN IS UNCLASSIFIED AND NOT TO BE RELEASED OR GATHERED BY KIRU STAFF OR REPRESENTATIVES TO ANY OTHER PARTY WITHOUT THE WRITTEN PERMISSION OF KIRU. THE USE OF THIS DOCUMENT IS INTENDED FOR INTERNAL USE ONLY AS A REFERENCE DOCUMENT. THIS DOCUMENT IS NOT TO BE USED IN ANY MANNER THAT COULD BE CONSIDERED AN ATTEMPT TO DISSEMINATE KIRU DESIGN GROUP OR ITS SUBSIDIARIES.

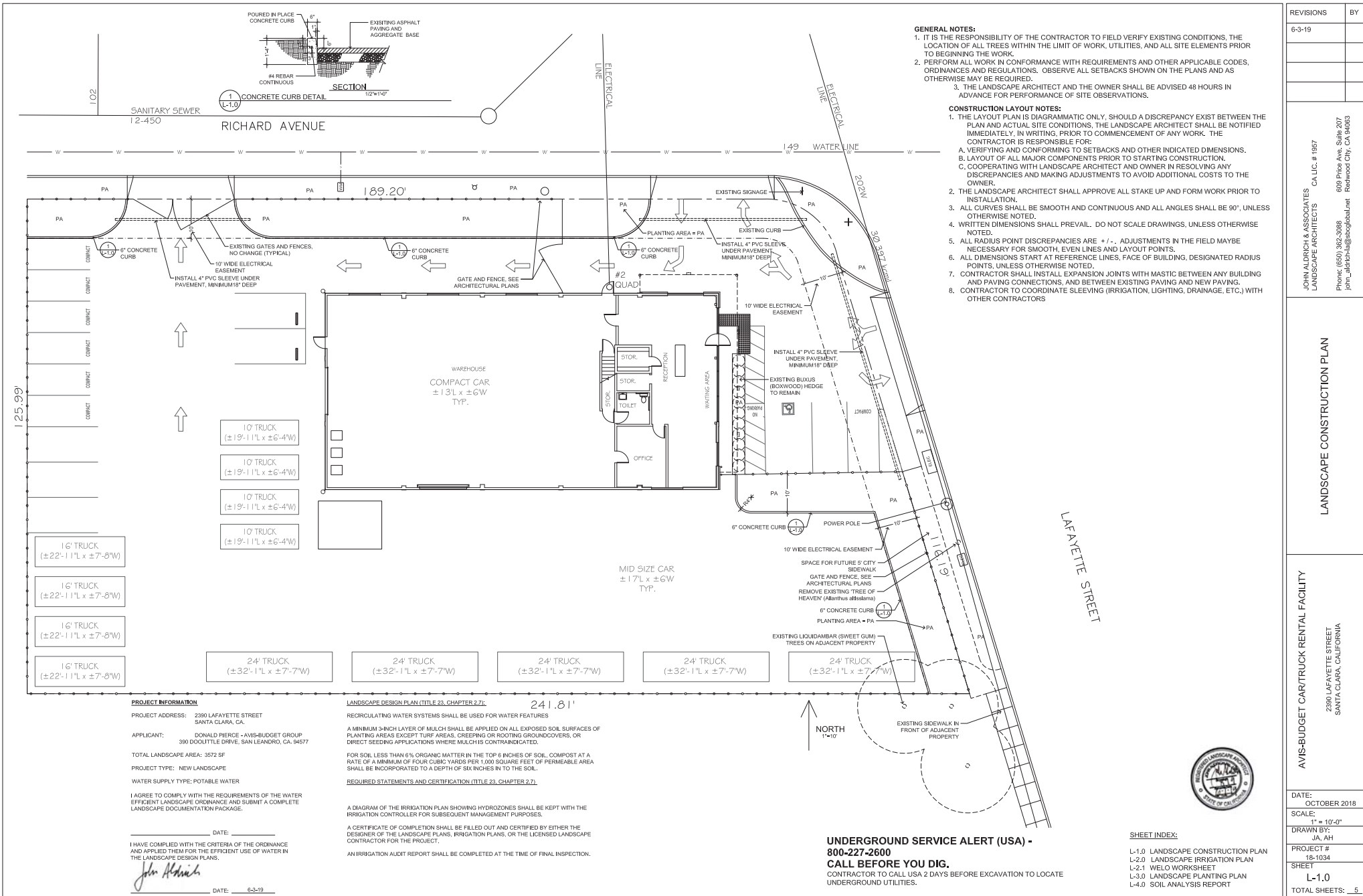
WE CANNOT ACCEPT RESPONSIBILITY FOR DIMENSIONS TAKEN FROM BLUEPRINTS SUPPLIED BY CLIENT/ARCHITECT.

ON SITE DIMENSIONS HAVE NOT BEEN TAKEN. VERIFICATION OF DIMENSIONS TO BE DONE BY CLIENT/ARCHITECT.

SHEET NO.

1 of 1 page

SITE PLAN, FLOOR PLANS AND ELEVATIONS



**PROJECT INFORMATION**

PROJECT ADDRESS: 2390 LAFAYETTE STREET  
SANTA CLARA, CA.  
APPLICANT: DONALD PIERCE - AVIS-BUDGET GROUP  
390 DOOLITTLE DRIVE, SAN LEANDRO, CA. 94577  
TOTAL LANDSCAPE AREA: 3572 SF  
PROJECT TYPE: NEW LANDSCAPE  
WATER SUPPLY TYPE: POTABLE WATER  
I AGREE TO COMPLY WITH THE REQUIREMENTS OF THE WATER  
EFFICIENT LANDSCAPE ORDINANCE AND SUBMIT A COMPLETE  
LANDSCAPE DOCUMENTATION PACKAGE.

I HAVE COMPLIED WITH THE CRITERIA OF THE ORDINANCE  
AND APPLIED THEM FOR THE EFFICIENT USE OF WATER IN  
THE LANDSCAPE DESIGN PLANS.

DATE: 6-3-19

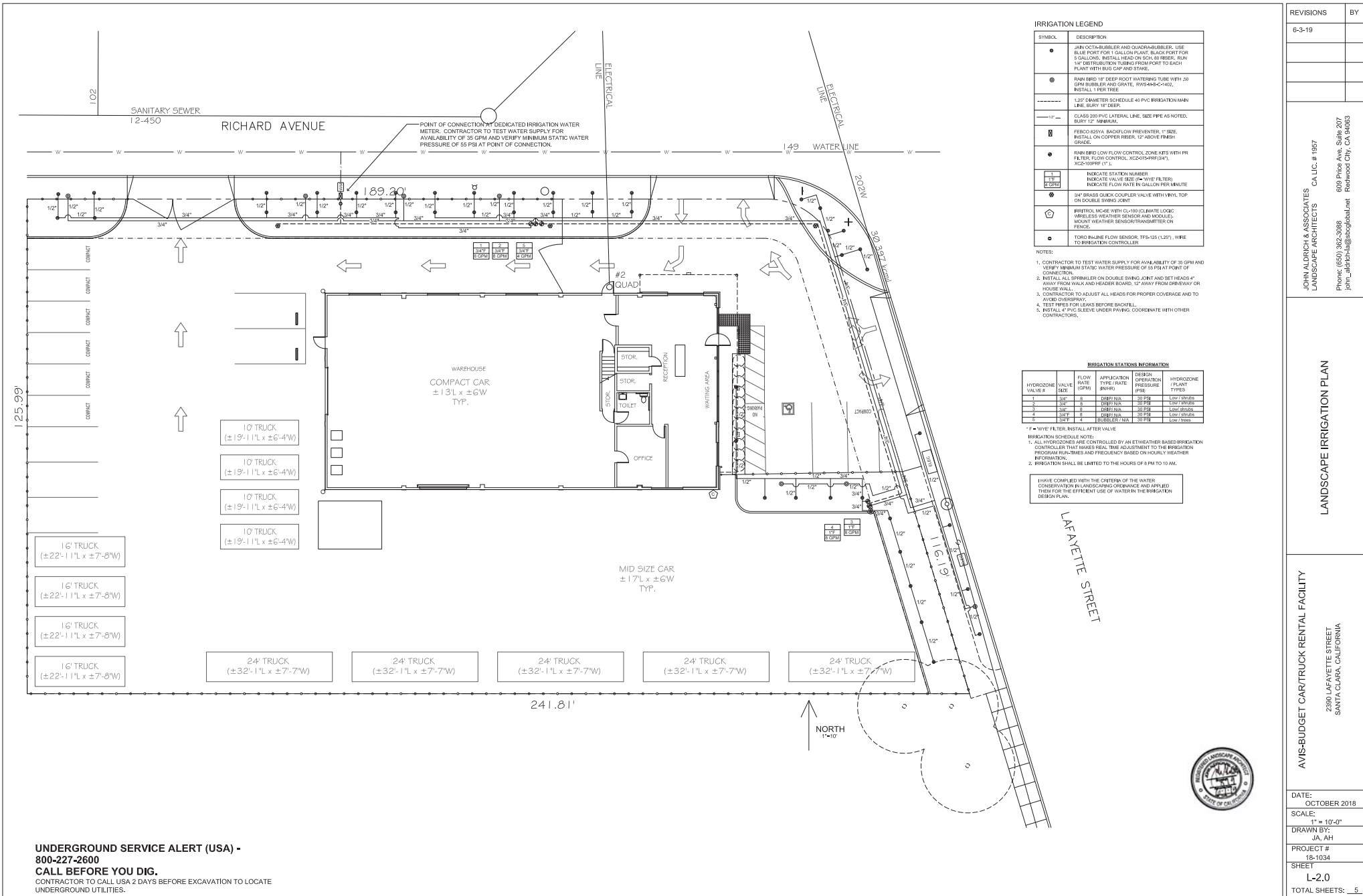
**LANDSCAPE DESIGN PLAN (TITLE 23, CHAPTER 2.7)**

REGRULATING WATER SYSTEMS SHALL BE USED FOR WATER FEATURES  
A MINIMUM 3-INCH LAYER OF MULCH SHALL BE APPLIED ON ALL EXPOSED SOIL SURFACES OF  
PLANTING AREAS EXCEPT TURF AREAS, CREEPING OR ROOTING GROUNDCOVERS, OR  
DIRECT SEEDING APPLICATIONS WHERE MULCH IS CONTRAINDICATED.  
FOR SOIL LESS THAN 6% ORGANIC MATTER IN THE TOP 6 INCHES OF SOIL, COMPOST AT A  
RATE OF A MINIMUM OF FOUR CUBIC YARDS PER 1,000 SQUARE FEET OF PERMEABLE AREA  
SHALL BE INCORPORATED TO A DEPTH OF SIX INCHES IN THE SOIL.  
REQUIRED STATEMENTS AND CERTIFICATION (TITLE 23, CHAPTER 2.7)  
A DIAGRAM OF THE IRRIGATION PLAN SHOWING HYDROZONES SHALL BE KEPT WITH THE  
IRRIGATION CONTROLLER FOR SUBSEQUENT MANAGEMENT PURPOSES.  
A CERTIFICATE OF COMPLETION SHALL BE FILLED OUT AND CERTIFIED BY EITHER THE  
DESIGNER OF THE LANDSCAPE PLANS, IRRIGATION PLANS, OR THE LICENSED LANDSCAPE  
CONTRACTOR FOR THE PROJECT.  
AN IRRIGATION AUDIT REPORT SHALL BE COMPLETED AT THE TIME OF FINAL INSPECTION.

**UNDERGROUND SERVICE ALERT (USA) -  
800-227-2600  
CALL BEFORE YOU DIG.**  
CONTRACTOR TO CALL USA 2 DAYS BEFORE EXCAVATION TO LOCATE  
UNDERGROUND UTILITIES.

**SHEET INDEX:**  
L-1.0 LANDSCAPE CONSTRUCTION PLAN  
L-2.0 LANDSCAPE IRRIGATION PLAN  
L-2.1 WELD WORKSHEET  
L-3.0 LANDSCAPE PLANTING PLAN  
L-4.0 SOIL ANALYSIS REPORT

REVISIONS	BY
6-3-19	
LANDSCAPE CONSTRUCTION PLAN	
AVIS-BUDGET CAR/TRUCK RENTAL FACILITY	
2390 LAFAYETTE STREET SANTA CLARA, CALIFORNIA	
DATE: OCTOBER 2018	
SCALE: 1" = 10'-0"	
DRAWN BY: JA, AH	
PROJECT # 18-1034	
SHEET L-1.0	
TOTAL SHEETS: 5	



IRRIGATION LEGEND	
SYMBOL	DESCRIPTION
●	JANUARY-BUBBLER AND QUADRA-BUBBLER. USE BLUE PORT FOR 1 GAL/WATER PLANT. BLACK PORT FOR 5 GALLONS. INSTALL HEAD ON SCH. 40 RISER. RUN 1/2" DISTRIBUTION TUBING FROM PORT TO EACH PLANT WITH BUB CAP AND STAKE.
⊙	RAN BIRD 12" DEEP ROOT WATERING TUBE WITH 20 GPM BUBBLER AND GRATE. RWS-44-C-402. INSTALL 1 PER TREE.
-----	12" DIAMETER SCHEDULE 40 PVC IRRIGATION MAIN LINE. BURY 18" DEEP.
-----	CLASS 200 PVC LATERAL LINE. SIZE PIPE AS NOTED. BURY 12" MINIMUM.
⊞	PERCO 620VA BACKFLOW PREVENTER. 1" SIZE. INSTALL ON COPPER RISER. 12" ABOVE FINISH GRADE.
●	RAN BIRD LOW FLOW CONTROL ZONE KITS WITH PR FILTER FLOW CONTROL. K2000-PR-004V. K2Z-100PRF (1" L).
1 12 1.02PI	INDICATE STATION NUMBER INDICATE VALVE SIZE (I" WYE FILTER) INDICATE FLOW RATE IN GALLON PER MINUTE
⊞	3/4" BRASS QUICK COUPLER VALVE WITH VINYL TOP ON DOUBLE SWING JOINT.
⊞	IRRIKIT. MC-6E WITH GL-180 CLIMATE LOGIC. WIRELESS WEATHER SENSOR AND MODULE. MOUNT WEATHER SENSOR/TRANSMITTER ON FENCE.
●	TORO IN-LINE FLOW SENSOR. TFS-125 (1.25"). WIRE TO IRRIGATION CONTROLLER.

- NOTES:
- CONTRACTOR TO TEST WATER SUPPLY FOR AVAILABILITY OF 30 GPM AND VERIFY MINIMUM STATIC WATER PRESSURE OF 55 PSI AT POINT OF CONNECTION.
  - INSTALL ALL SPRINKLER OR DOUBLE SWING JOINT AND SET HEADS 4" AWAY FROM WALK AND HEADER BOARD, 12" AWAY FROM DRIVEWAY OR HOUSE WALL.
  - CONTRACTOR TO ADJUST ALL HEADS FOR PROPER COVERAGE AND TO AVOID OVERSPRAY.
  - TEST PIPES FOR LEAKS BEFORE BACKFILL.
  - INSTALL 4" PVC SLEEVE UNDER PAVING. COORDINATE WITH OTHER CONTRACTORS.

IRRIGATION STATIONS INFORMATION					
HYDROZONE VALVE #	VALVE SIZE	FLOW RATE (GPM)	APPLICATION TYPE / RATE (GPM)	DESIGN OPERATION PRESSURE (PSI)	HYDROZONE / PLANT TYPES
1	3/4"	5	DEPT. TUN	30 PSI	LOW / TREES
2	3/4"	5	DEPT. TUN	30 PSI	LOW / TREES
3	3/4"	5	DEPT. TUN	30 PSI	LOW / TREES
4	3/4"	5	DEPT. TUN	30 PSI	LOW / TREES
5	3/4"	5	BUBBLER TUN	30 PSI	LOW / TREES

- 1" = WYE FILTER. INSTALL AFTER VALVE
- IRRIGATION SCHEDULE NOTE:
- ALL HYDROZONES ARE CONTROLLED BY AN ET/WEATHER BASED IRRIGATION CONTROLLER THAT MAKES REAL TIME ADJUSTMENT TO THE IRRIGATION PROGRAM RUNTIMES AND FREQUENCY BASED ON HOURLY WEATHER INFORMATION.
  - IRRIGATION SHALL BE LIMITED TO THE HOURS OF 8 PM TO 10 AM.
- HAVE COMPLIED WITH THE CRITERIA OF THE WATER CONSERVATION IN LANDSCAPING ORDINANCE AND APPLIED THEM FOR THE EFFICIENT USE OF WATER IN THE IRRIGATION DESIGN PLAN.

**UNDERGROUND SERVICE ALERT (USA) - 800-227-2600**  
**CALL BEFORE YOU DIG.**  
CONTRACTOR TO CALL USA 2 DAYS BEFORE EXCAVATION TO LOCATE UNDERGROUND UTILITIES.

REVISIONS

BY

6-3-19

JOHN ALDRICH & ASSOCIATES  
LANDSCAPE ARCHITECTS

CALIC. # 1857

600 Pico Ave. Suite 207  
Redwood City, CA 94063

Phone: (650) 362-3088  
jalm@aldrich-associates.net

LANDSCAPE IRRIGATION PLAN

AVIS-BUDGET CAR/TRUCK RENTAL FACILITY

2380 LAFAYETTE STREET  
SANTA CLARA, CALIFORNIA

DATE:  
OCTOBER 2018

SCALE:  
1" = 10'-0"

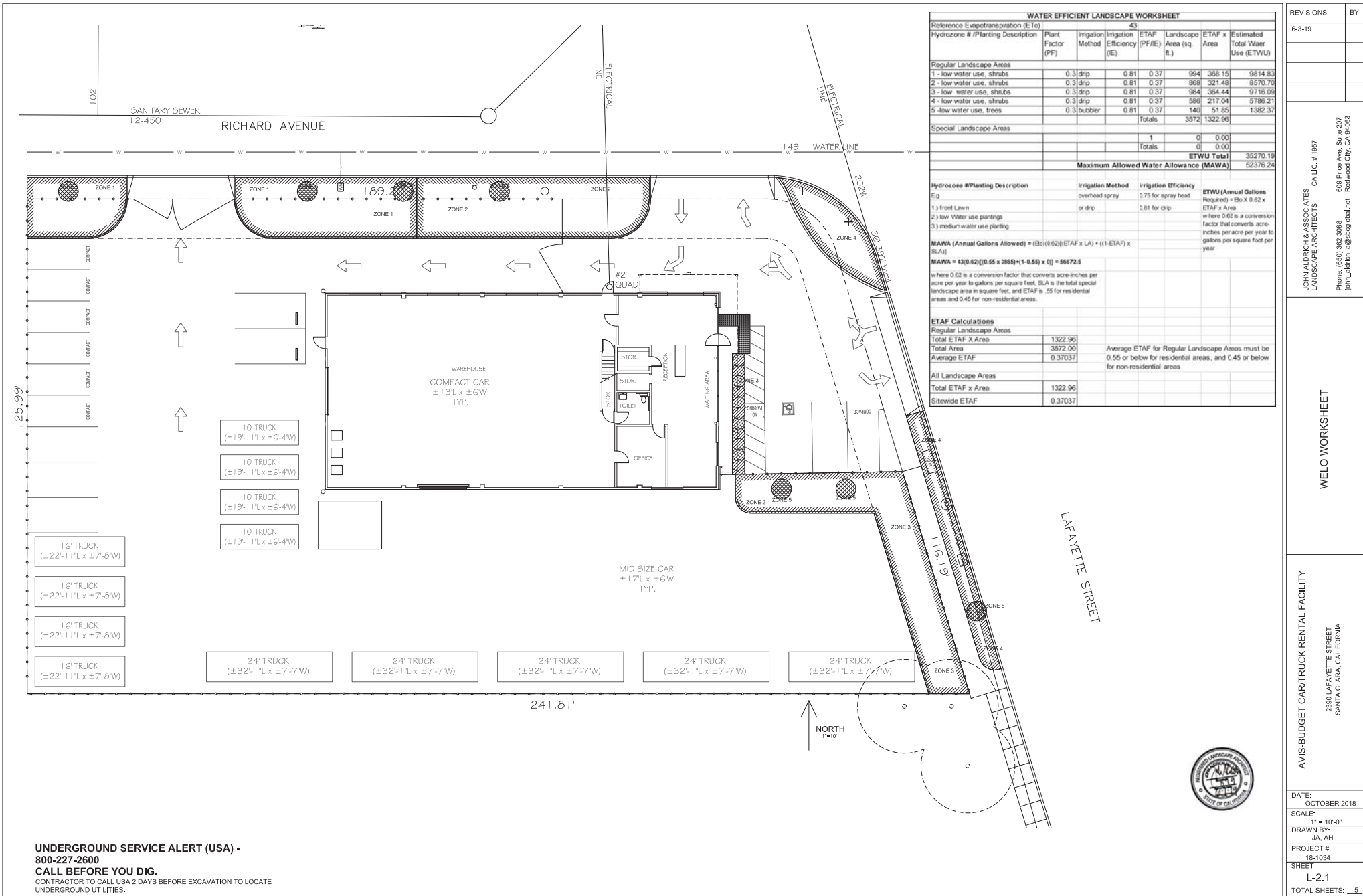
DRAWN BY:  
JA, AH

PROJECT #  
18-1034

SHEET  
L-2.0

TOTAL SHEETS: 5





WATER EFFICIENT LANDSCAPE WORKSHEET							
Reference Evapotranspiration (ET <sub>o</sub> )				43			
Hydrozone # (Planting Description)	Plant Factor (PF)	Irrigation Method	Irrigation Efficiency (IE)	ETAF (PF/IE)	Landscape Area (sq. ft.)	ETAF x Area	Estimated Total Water Use (ETWU)
Regular Landscape Areas							
1 - low water use, shrubs	0.3	drip	0.81	0.37	994	368.15	9814.83
2 - low water use, shrubs	0.3	drip	0.81	0.37	968	321.48	8570.70
3 - low water use, shrubs	0.3	drip	0.81	0.37	964	364.44	9716.09
4 - low water use, shrubs	0.3	drip	0.81	0.37	586	217.04	5786.21
5 - low water use, trees	0.3	bubbler	0.81	0.37	140	51.85	1382.37
				Totals	3572	1322.96	
Special Landscape Areas							
				1	0	0.00	
				Totals	0	0.00	
						ETWU Total	35270.19
						Maximum Allowed Water Allowance (MAWA)	52376.24
Hydrozone # (Planting Description)				Irrigation Method		Irrigation Efficiency	
E.g.				overhead spray		0.75 for spray head	
1) front lawn				or drip		0.81 for drip	
2) low water use plantings							
3) medium water use plantings							
						ETWU (Annual Gallons Required) = ETo X 0.62 X ETAF x Area	
						= here 0.62 is a conversion factor that converts acre-inches per acre per year to gallons per square foot per year	
<b>MAWA (Annual Gallons Allowed)</b> = (ETo)(0.62)(ETAF x LA) + ((1-ETAF) x SLA)							
<b>MAWA = 43(0.62)((0.55 x 3865)+(1-0.55) x 0) = 56672.5</b>							
where 0.62 is a conversion factor that converts acre-inches per acre per year to gallons per square foot, SLA is the total special landscape area in square feet, and ETAF is .55 for residential areas and 0.45 for non-residential areas.							
ETAF Calculations							
Regular Landscape Areas							
Total ETAF x Area				1322.96			
Total Area				3672.00			
Average ETAF				0.37037			
Average ETAF for Regular Landscape Areas must be 0.55 or below for residential areas, and 0.45 or below for non-residential areas							
All Landscape Areas							
Total ETAF x Area				1322.96			
Sitewide ETAF				0.37037			

UNDERGROUND SERVICE ALERT (USA) - 800-227-2600  
CALL BEFORE YOU DIG.  
CONTRACTOR TO CALL USA 2 DAYS BEFORE EXCAVATION TO LOCATE UNDERGROUND UTILITIES.

REVISIONS

BY

6-3-19

JOHN ALDRICH & ASSOCIATES  
LANDSCAPE ARCHITECTS

CALIC. # 1857

609 Pico Ave, Suite 207  
Redwood City, CA 94063

Phone: (650) 362-3088  
jalm@aldrich-land.com

AVIS-BUDGET CAR/TRUCK RENTAL FACILITY

2380 LAFAYETTE STREET  
SANTA CLARA, CALIFORNIA

DATE: OCTOBER 2018

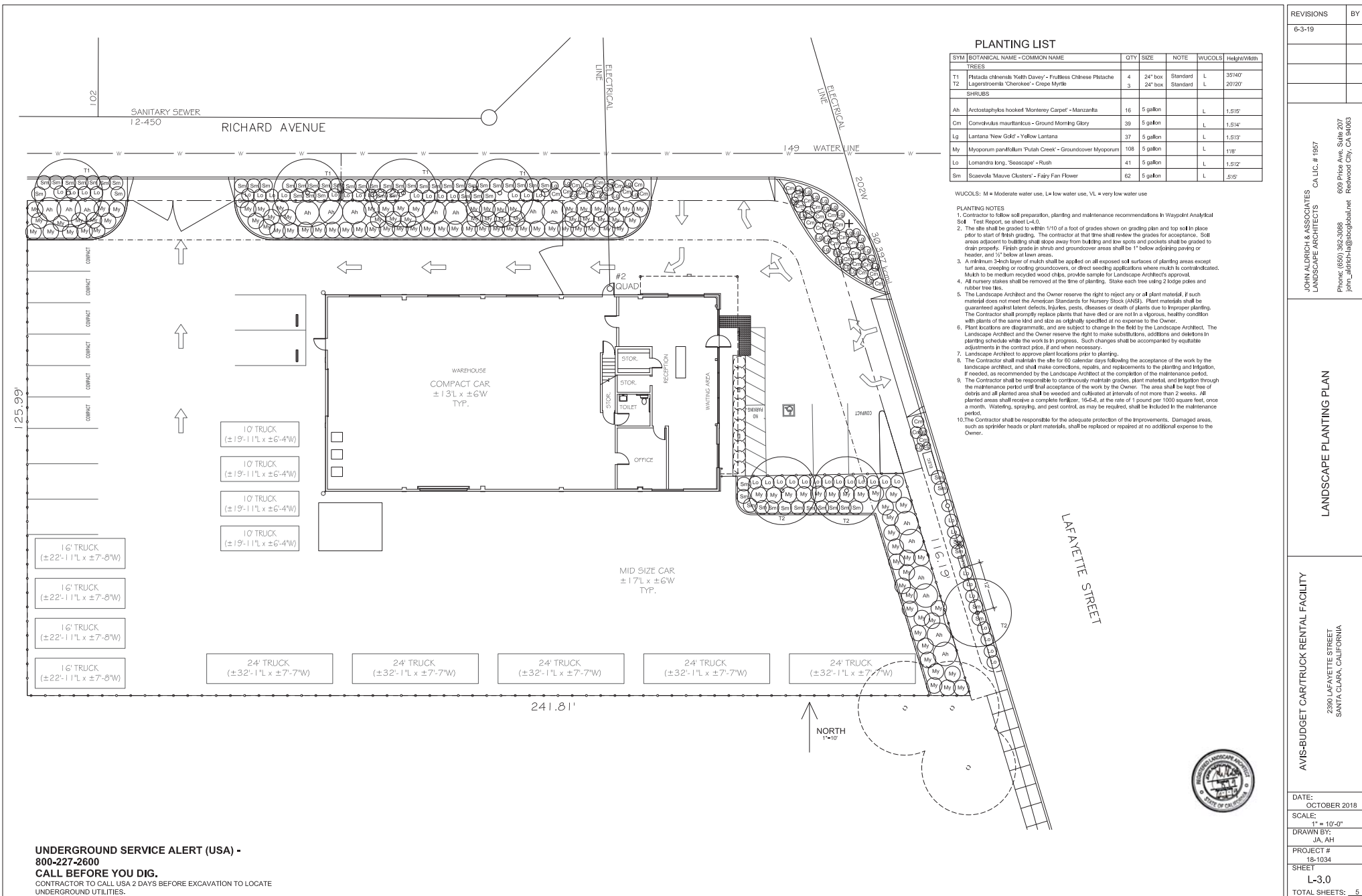
SCALE: 1" = 10'-0"

DRAWN BY: JA, AH

PROJECT # 18-1034

SHEET L-2.1

TOTAL SHEETS: 5



REVISIONS	BY
6-3-19	


JOHN ALDRICH & ASSOCIATES  
LANDSCAPE ARCHITECTS CA LIC. # 1957

609 Price Ave, Suite 207  
Redwood City, CA 94063

Phone: (650) 362-3088  
john\_aldrich-la@sbcglobal.net

## LANDSCAPE PLANTING PLAN

AVIS-BUDGET CAR/TRUCK RENTAL FACILITY

2390 LAFAYETTE STREET  
SANTA CLARA, CALIFORNIA

DATE:	OCTOBER 2018
SCALE:	1" = 10'-0"
DRAWN BY:	JA, AH
PROJECT #	18-1034
SHEET	L-3.0
TOTAL SHEETS:	5



