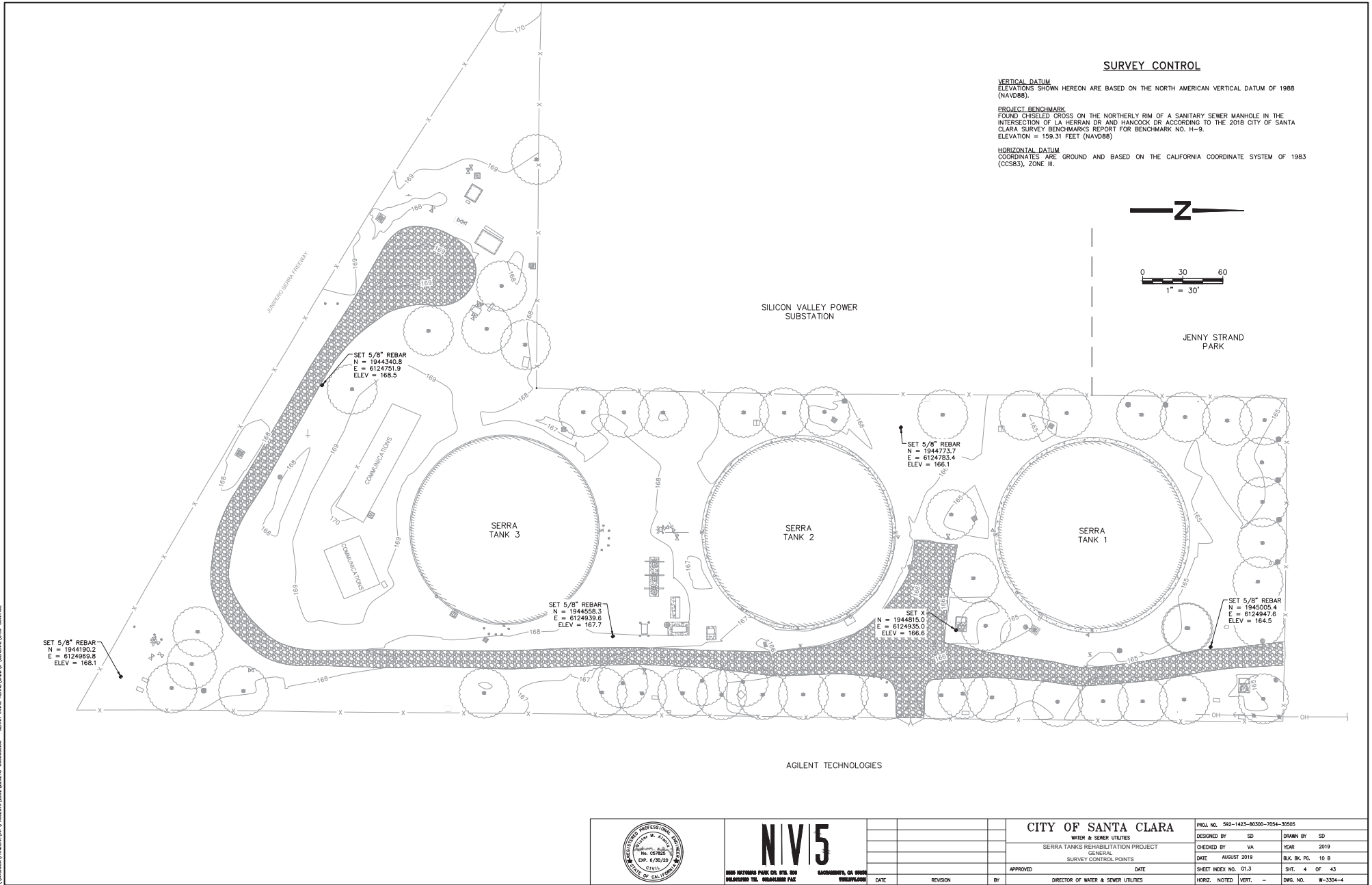


MODEL: ROBERTSON
\\NAS001\PROJECTS\2019\2019-000000000 - SERRA TANKS REBAR CASE - GENERAL - 17 - CONTROL

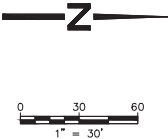



SURVEY CONTROL

VERTICAL DATUM
ELEVATIONS SHOWN HEREON ARE BASED ON THE NORTH AMERICAN VERTICAL DATUM OF 1988 (NAVD88).

PROJECT BENCHMARK
FOUND CHISELED CROSS ON THE NORTHERLY RIM OF A SANITARY SEWER MANHOLE IN THE INTERSECTION OF LA HERRAN DR AND HANCOCK DR ACCORDING TO THE 2018 CITY OF SANTA CLARA SURVEY BENCHMARKS REPORT FOR BENCHMARK NO. H-9.
ELEVATION = 159.31 FEET (NAVD88)

HORIZONTAL DATUM
COORDINATES ARE GROUND AND BASED ON THE CALIFORNIA COORDINATE SYSTEM OF 1983 (CCS83), ZONE III.



	<div><div><div>NIV5</div><div>SERRA TANKS REBAR CASE, UTL & SW RELATING TO: REBAR CASE FILE</div></div><div>SACRAMENTO, CA 95811 TEL: (916) 444-1111</div></div>			CITY OF SANTA CLARA		PROJ. NO. 592-1423-80300-7054-30505	
				WATER & SEWER UTILITIES		DESIGNED BY: SD	DRAWN BY: SD
				SERRA TANKS REHABILITATION PROJECT		CHECKED BY: VA	YEAR: 2019
				GENERAL SURVEY CONTROL POINTS		DATE: AUGUST 2019	BLK. BK. PG. 10 B
	DATE	REVISION	BY	APPROVED	DATE	SHEET INDEX NO. G1.3	
						SHT. 4 OF 43	DWG. NO. W-3304-4
				DIRECTOR OF WATER & SEWER UTILITIES		HORIZ. NOTED: VERT. -	