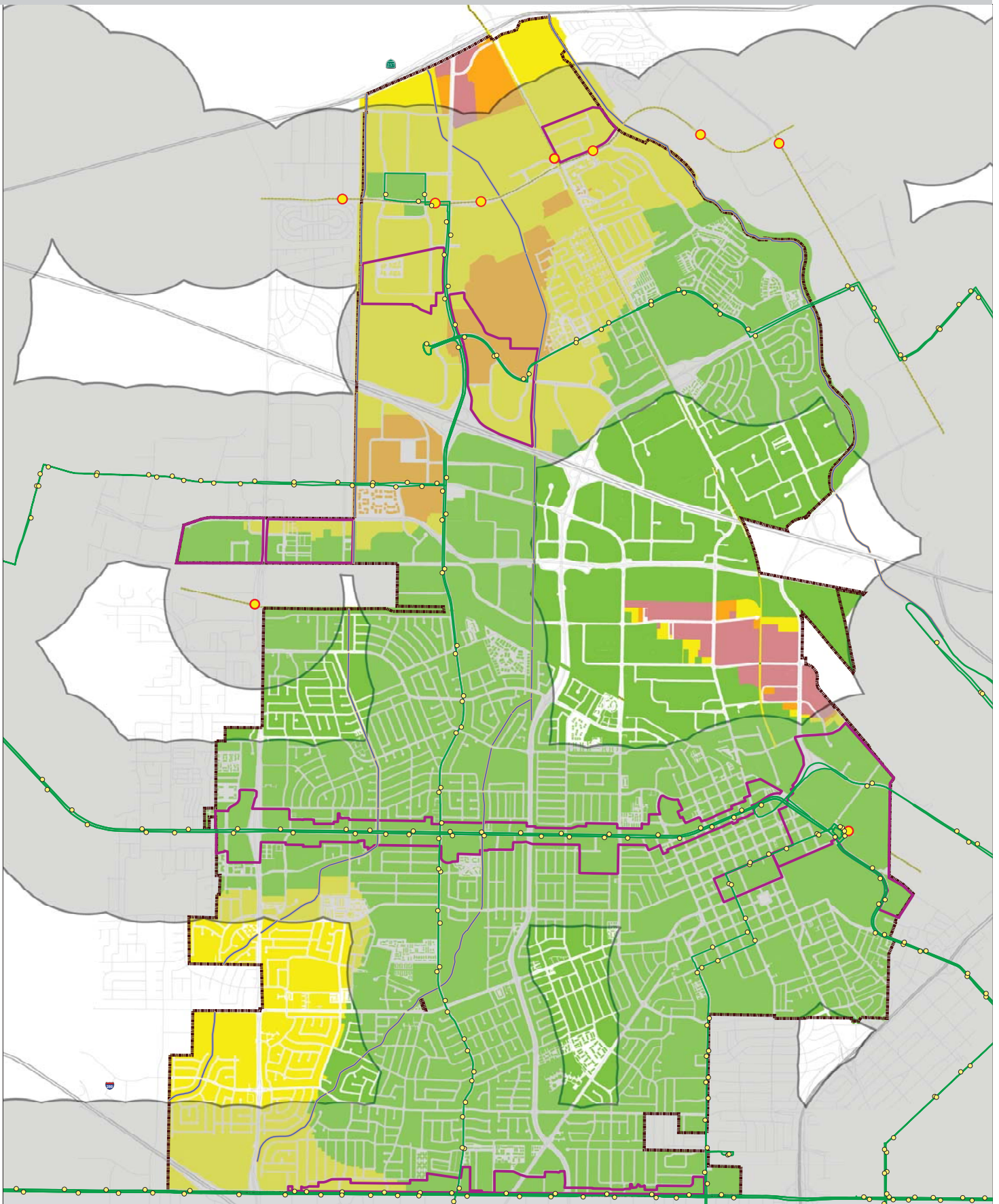


# City of Santa Clara VMT Heat Map - Residential Uses



City of Santa Clara 2015 Residential VMT per Capita  
(assuming threshold = 15% below city avg)

- Below Threshold VMT
- Between Threshold & Average
- Above Average, Mitigatable
- Immitigable VMT
- Zero Res VMT

- FreqBusRoutes
- FreqBusStops
- Focus Areas
- City Limit

Disclaimer (updated March 17, 2020):  
This map/data is provided by VTA without warranty of any kind, either express or implied, including but not limited to, the implied warranties of merchantability, and fitness for particular purpose. Refer to full Disclaimer at [www.vta.org/vtmapdisclaimer](http://www.vta.org/vtmapdisclaimer).  
Note: If the User reproduces this map or uses the underlying data from VTA to create another map, the User must include the above text, in addition to any disclaimer provided by the User.

Date map created: 03/17/2020