

FOREST PARK

National Award Winning Mackay Homes in Distinctive



Pace Setter Designs

CLIFFORD QUIST
CH. 8-2589

Setting the Pace

FOR THE FABULOUS

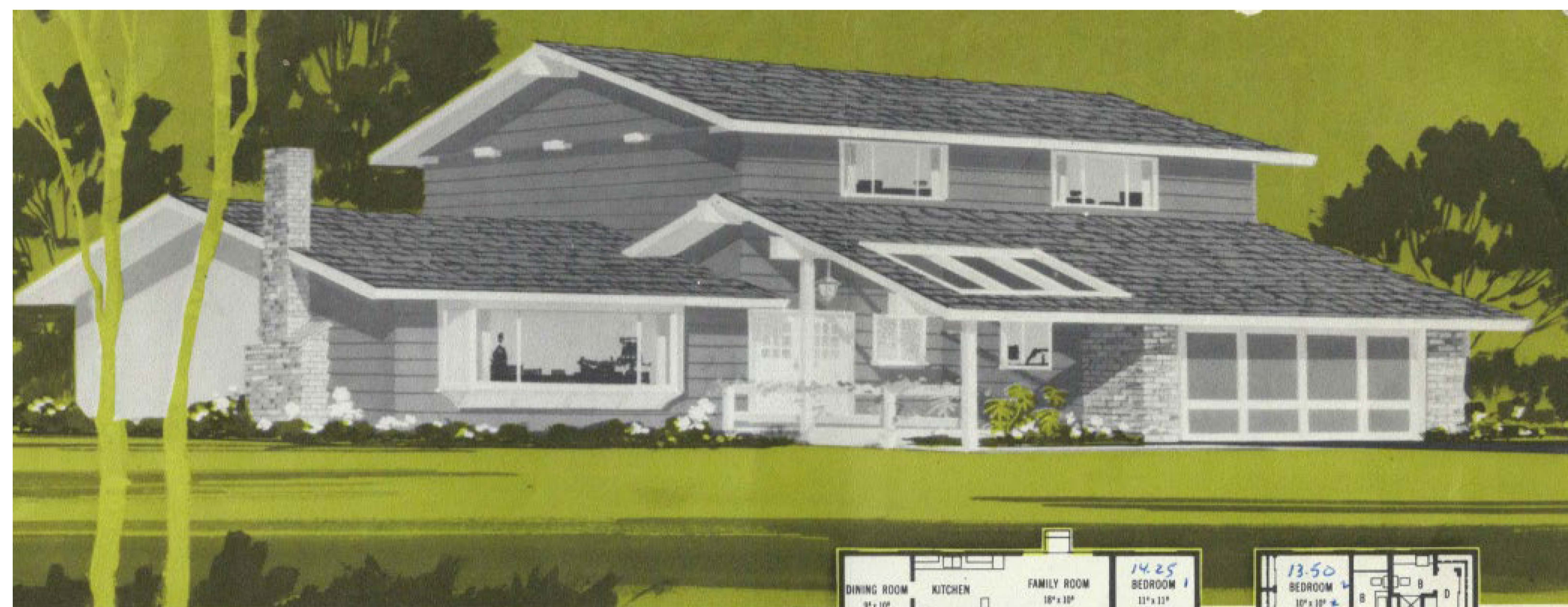
1960's



Mackay homes presents, in Forest Park, a lovely residential neighborhood of fine homes in a naturally beautiful setting. Designed to set the pace for the future in community planning as well as new home design, Forest Park has outstanding location advantages. In the very heart of the booming westside of Santa Clara, it nevertheless has a quiet orchard setting which gives it a mature, established appearance at the very outset.

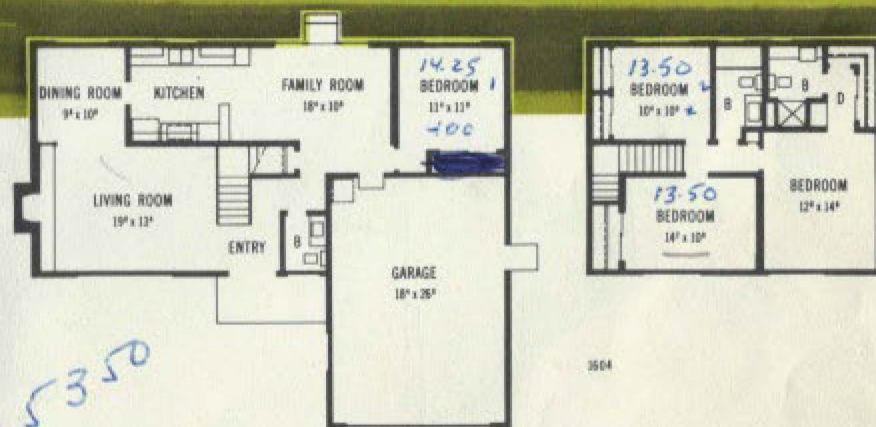
The new home designs in Forest Park are the results of years of careful planning and experience, as well as intensive market research to determine the needs and desires of those homemakers who are now looking for what may well be their "permanent" home. These new "Pacesetter" designs are all characterized by maximum efficiency and use of space, superb craftsmanship, and good taste in both interior and exterior design. Outstanding design and color consultants have been retained to insure that the many home styles blend naturally and pleasantly into a lovely, well-planned neighborhood.

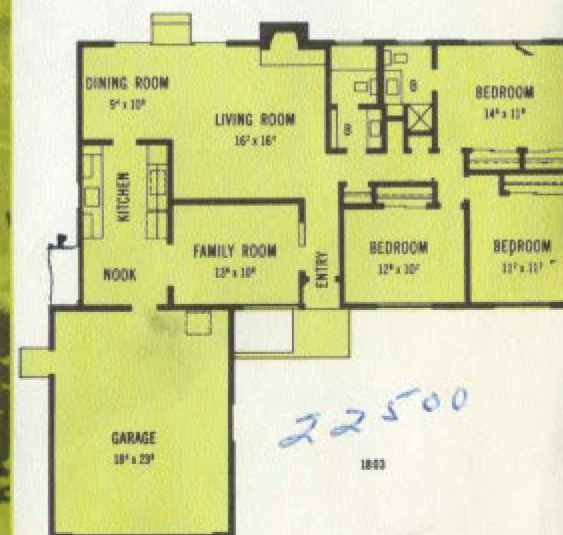
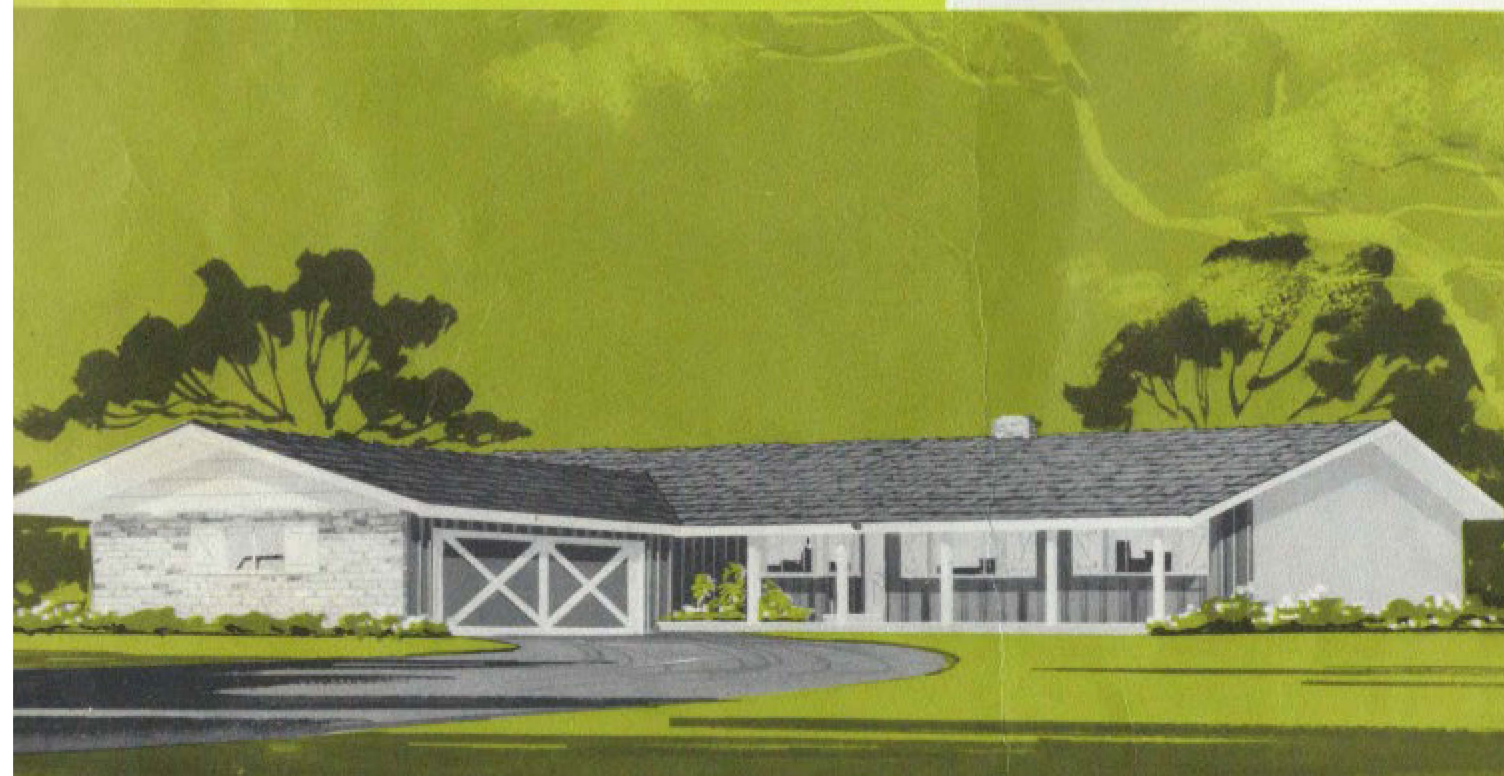
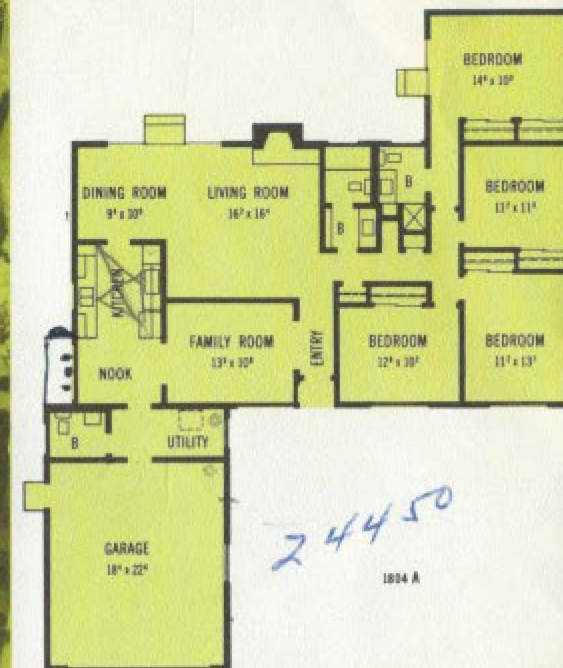
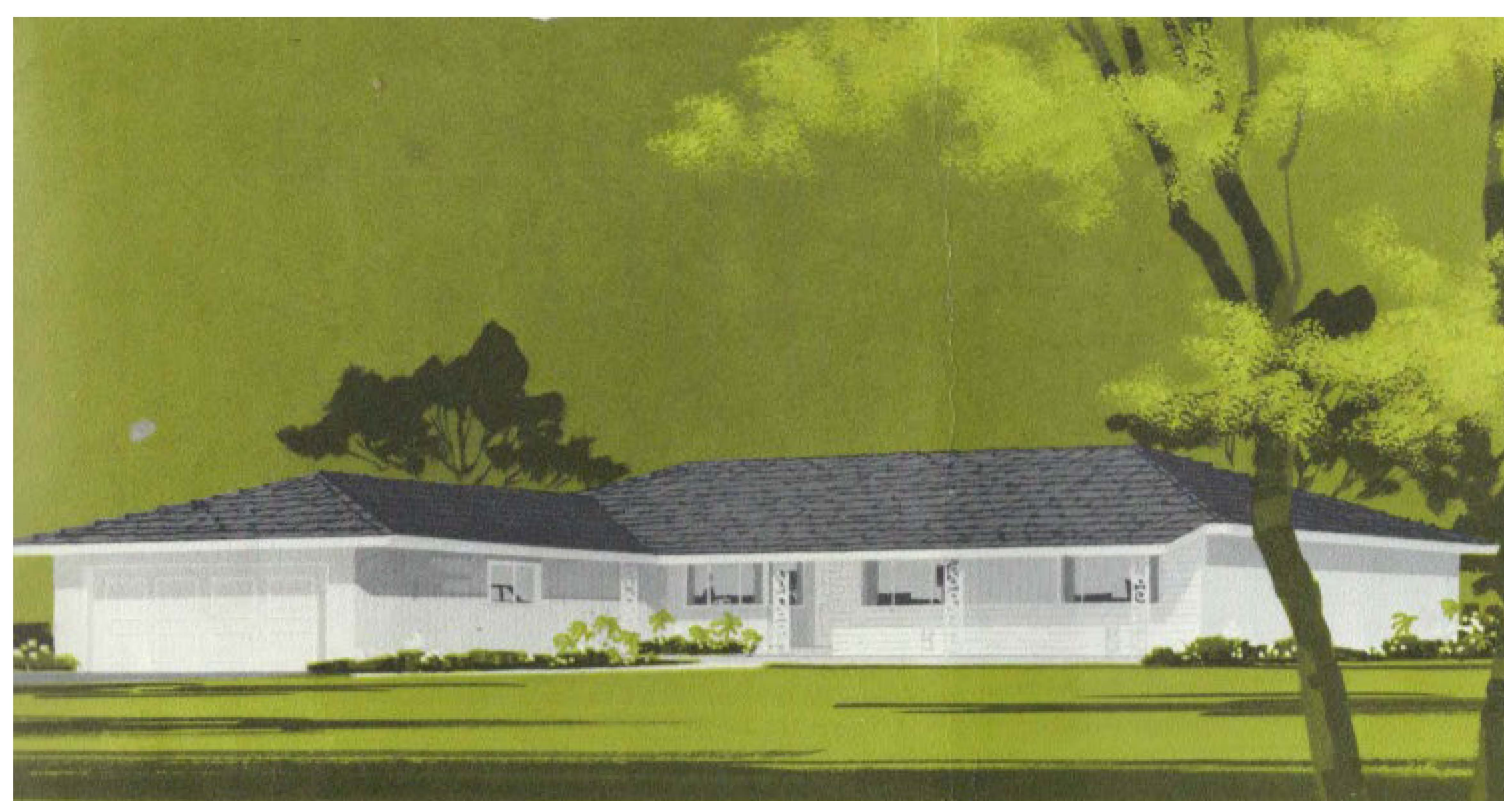
Mackay homes has already gained a national reputation as distinguished home builders, and Forest Park represents the finest homes our organization has ever built. As builders and developers, we are determined that, years from now, both the homeowners and ourselves will be extremely proud of Forest Park.



Handsome two story home for the family that needs more room!

Imagine! 4 big bedrooms, 2½ luxury baths, a huge living room, a separate dining area, plus a kitchen and family room combination that any homemaker would love. All this space in a truly beautiful home . . . so unlike the boxy two story houses of the past. This superb plan is available in either of the two handsome exterior styles shown here.

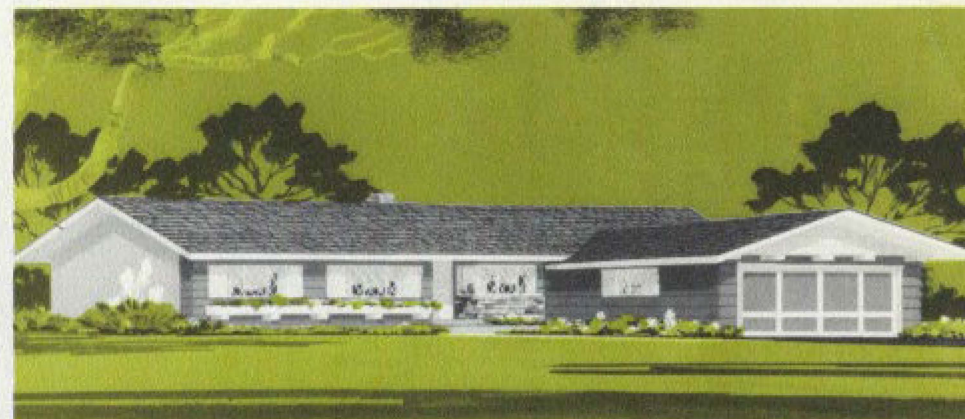




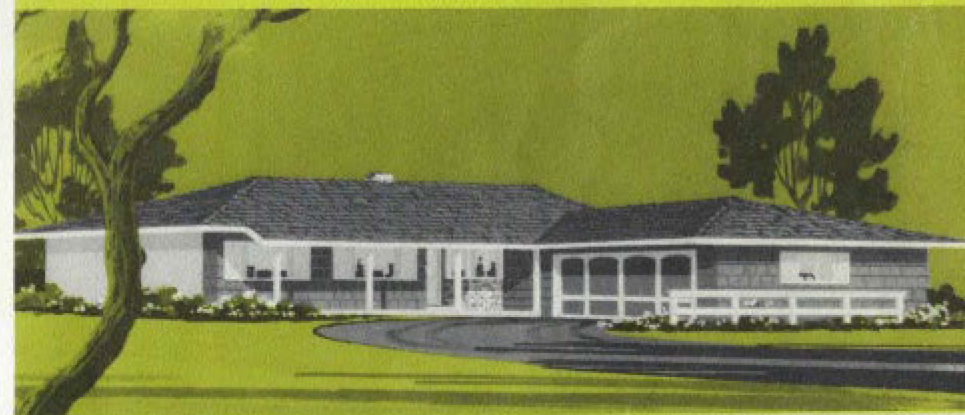
Winner!

**Parents' Magazine Merit
Award. One of America's "Best Homes
for Families with Children!"**

The 4 bedroom, 2½ bath, family room plan with utility room illustrated here (1804) is a larger, improved version of the award-winning Mackay home which was featured nationally in Parents' Magazine. Here are just a few of the reasons why this was selected as one of America's best family homes: A good basic plan with central entry hall makes every room accessible without crossing the formal living room. It has a real family room, which need not double as a dining room because there is a separate dining area as well as a big breakfast nook in the kitchen. The main bath has an extra large, tiled vanity, an entire wall of extra storage space, and a pocket door separating the powder room from the rest of the bath. The three bedroom version (1803) offers all of the same good basic planning and interior features for the smaller family.



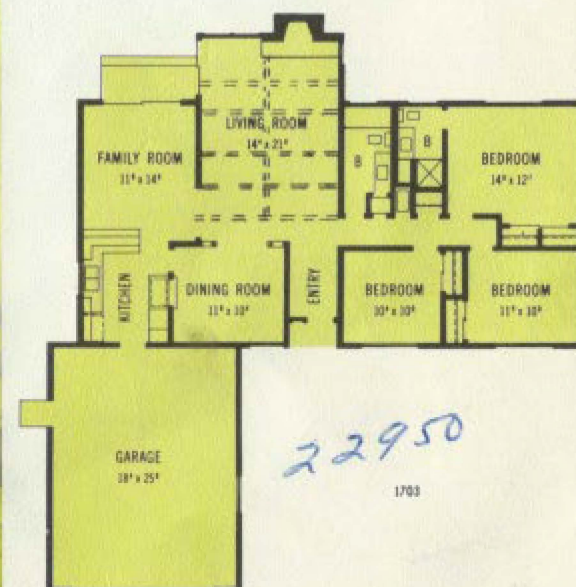
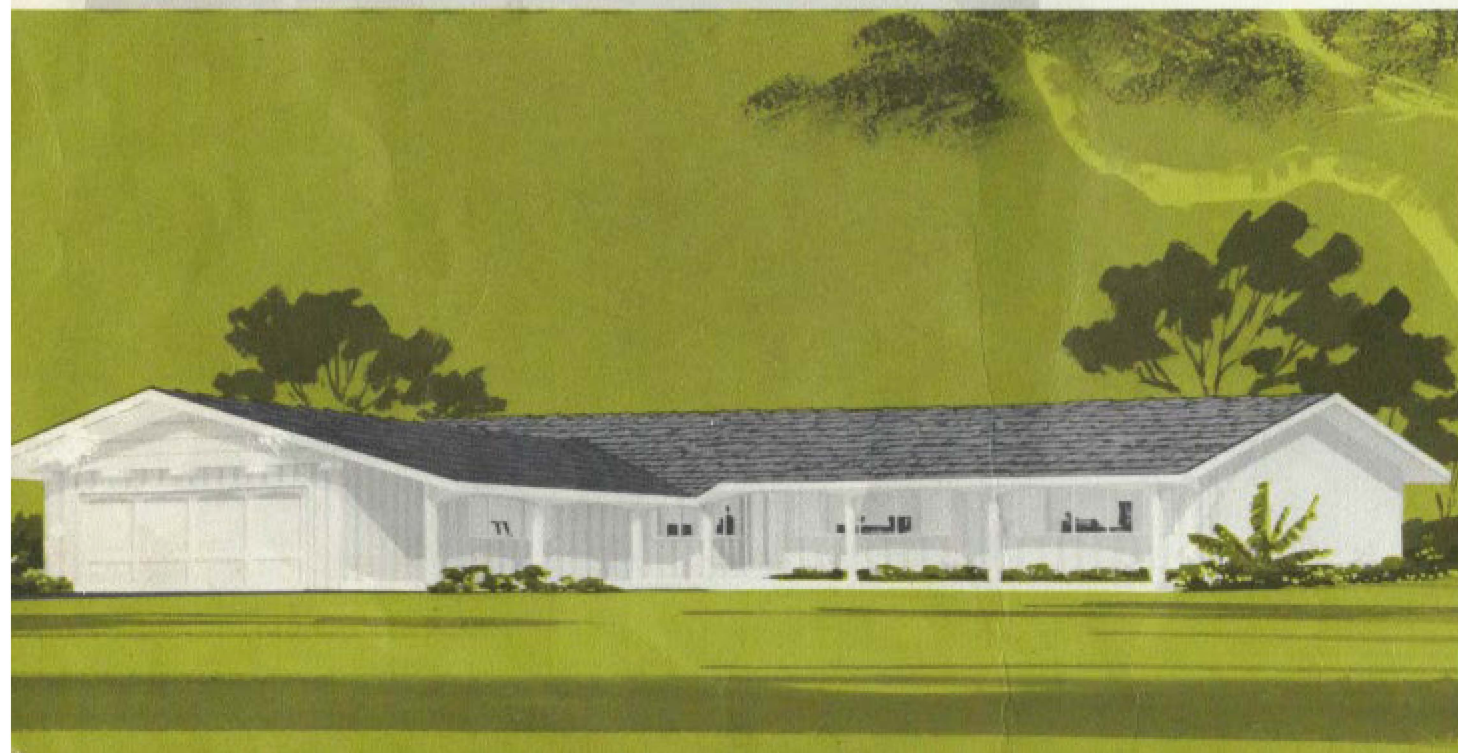
Pace Setter Series

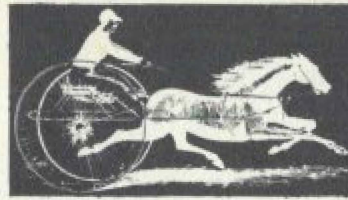


Custom Home Details Offered in These Brand New Mackay Plans



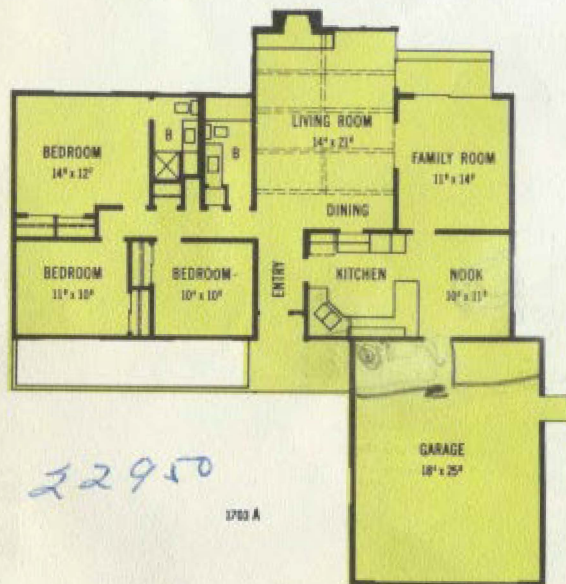
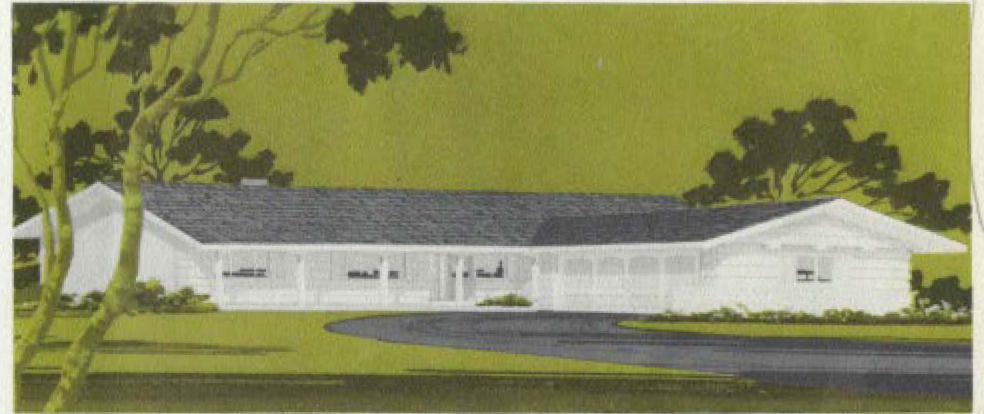
The two basic plans shown on these pages have certain similarities . . . they have exactly the same square footage and perimeter, they have exteriors which are interchangeable, and both offer the dramatically beautiful beamed ceiling living rooms. The differences, however, are distinctive, and they have their specific appeal to certain families. Plan 1703 will surely be wanted by those families who entertain frequently and





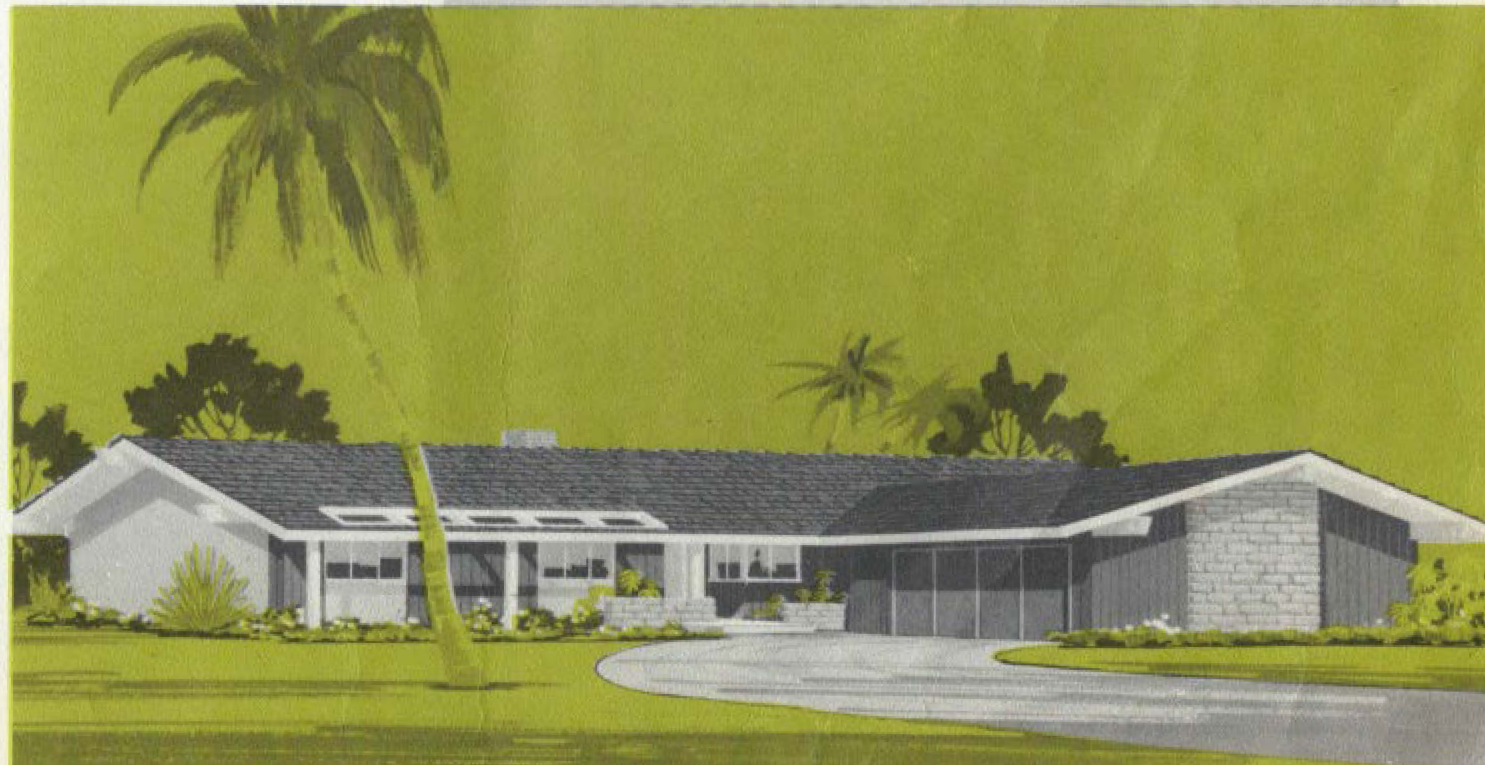
Pace Setter Series

need a large living room as well as a spacious, well-defined formal dining room. Plan 1703 Alternate is designed for the families that have only occasional use for a formal area, but who like a large family kitchen with plenty of room for every day dining. Note the wonderful family room arrangement, and facilities for easy indoor-outdoor living in both of these superb plans.



22950

1703 A



Quality Features

Built-in General Electric range and oven in color!

Beautifully grained natural woods in
cabinetry and paneled walls!

Extra large double garage with
plenty of storage space!

Fencing and front lawns included!

Gleaming oak hardwood floors!

Handsome cedar shingle or rustic shake roofs!

Thermostatically-controlled perimeter
heating to every room!

Heavy duty, first quality bath fixtures!

Custom fireplaces with raised hearths,
in used brick and slumpstone!

Extra large country lots average over
8,000 square feet!

Sliding glass doors to patio area!

Ceramic tile in all baths!

Aluminum sash windows!

Built-in electric fan and hood!

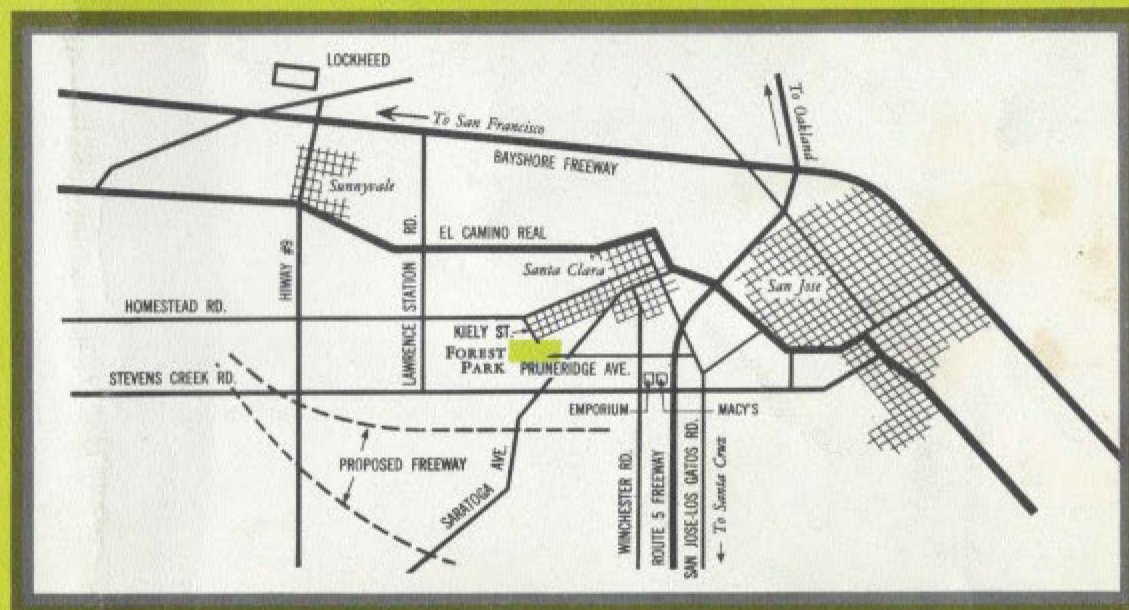
Custom interior details — wallpaper, colonial posts,
and indirect lighting soffits!

Beautiful colored glass in entry doors!

Many more superb extras at no extra cost!

FINEST LOCATION IN THE VALLEY!

Forest Park is the last really close-in neighborhood to be developed and it's unquestionably the best location in the entire Santa Clara Valley. Major shopping centers such as the Emporium and Macy's Valley Fair . . . as well as all of the Stevens Creek "Miracle Mile" stores are actually just minutes away. Even closer are several fine smaller centers. Schools are within the development and churches of every denomination are nearby. Note, too, the convenient location of freeways, both existing and planned. They are close enough for easy accessibility, yet far enough away that they will never be an annoyance to this secluded neighborhood.



Forest Park is in the city limits of Santa Clara and due to the progressive policies of this city, residents enjoy excellent protection and facilities, as well as the lowest utility rates of any city in the area.

