

City of Santa Clara

Development Review Hearing

FEBRUARY 17, 2021

2300 Calle De Luna

Public Hearing Item # 2

21-259

PLN2020-14381



**City of
Santa Clara**
The Center of What's Possible

2300 Calle de Luna

Request

- **Modification to a previously approved Architecture Review (PLN2018-13439) and Conditions of Approval to the Permitted Construction Hours to allow for construction on Saturdays between the hours of 9:00 am and 6:00 pm – for a 20-story residential tower with 191-unit Home for the Ambulatory Aged facility, 15,737 square foot flex space and associated amenity space.**

2300 Calle de Luna

- 5.53-acre site located on the southwest corner of Calle de Luna and Calle de Sol
- GP: Transit
Neighborhood
Zoning: Transit
Neighborhood



2300 Calle de Luna

Project Data

	Approved	Proposed
Building Square Footage (sf.)	1,087,561 sf	No change
Residential Units	509 Residential Units 191 Home for the Ambulatory Aged facility	No change
Commercial Square Footage (sf.)	19,410 sq. ft. retail 15,737 sq. ft. flex space	19,410 sq. ft. retail 18,828 sq. ft. flex space (13,605 sq. ft, interior) (5,223 sq. ft. exterior)
Parking	613 within parking structures 557 = universal spaces 42 = tandem spaces 14 = accessible spaces 45 = guest spaces* 21 = electric vehicle spaces* 2 = car share* *included in universal spaces count	No change

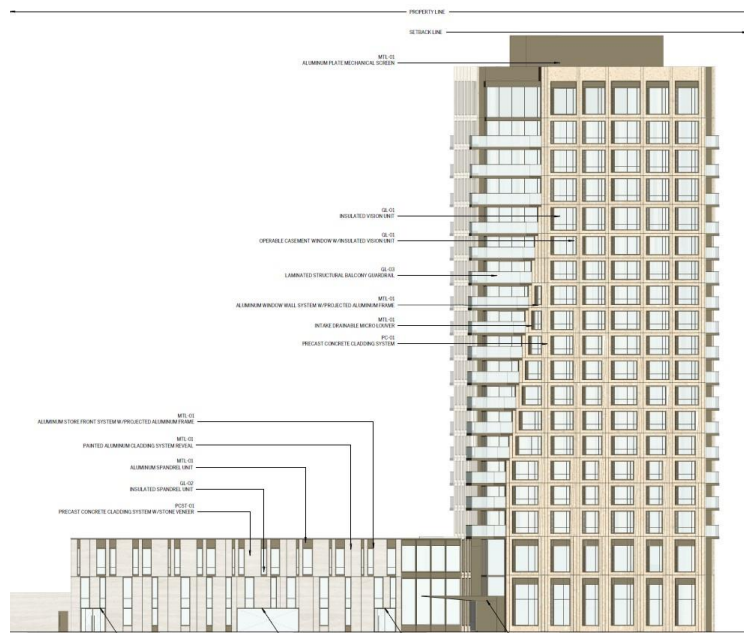
2300 Calle de Luna

Proposed Site Plan

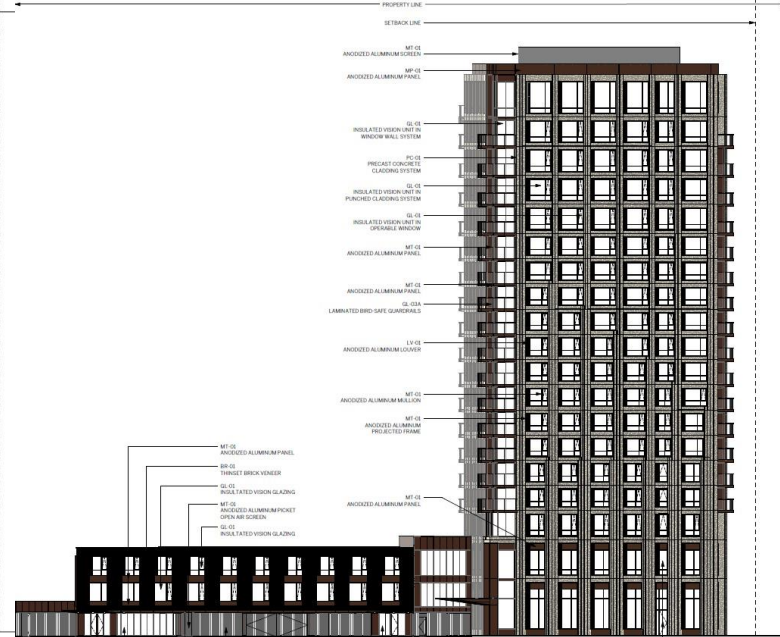
- 20-story Ambulatory Aged Tower, the building would consist of a four (4) story midrise structure with an additional sixteen-story tower on top.
- First three (3) floors are a midrise structure that houses parking
- 18,838 square foot of flex space (13,605 square foot interior and 5,223 square foot exterior) a lobby, staff offices, a bistro, a salon, housekeeping, a wandering garden, amenities, and some memory care units.

2300 Calle de Luna

Approved

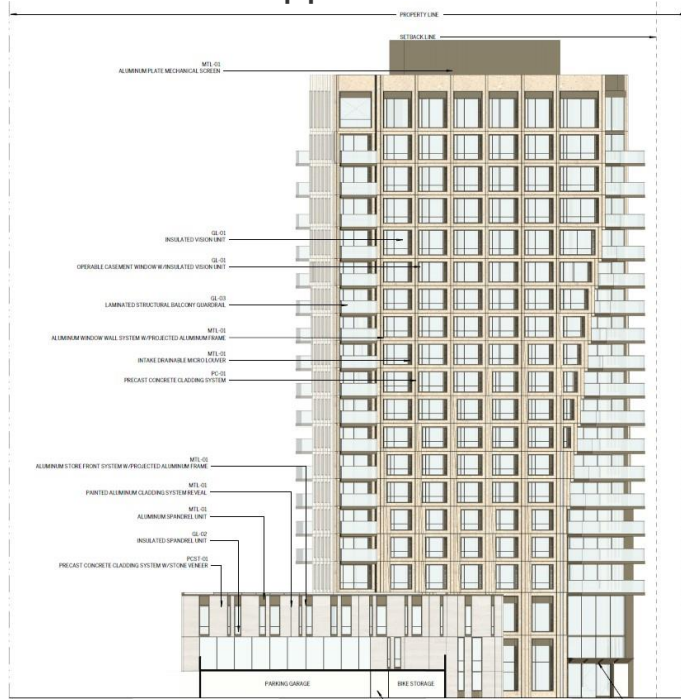


Proposed

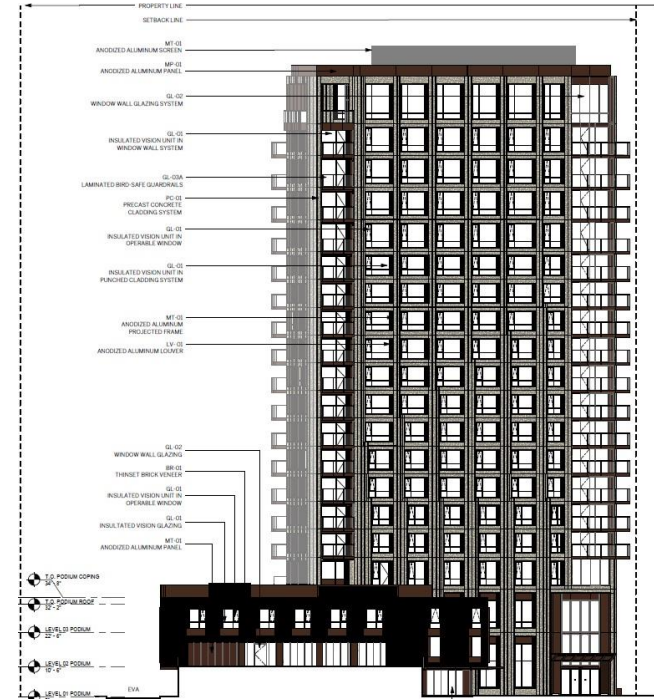


2300 Calle de Luna

Approved

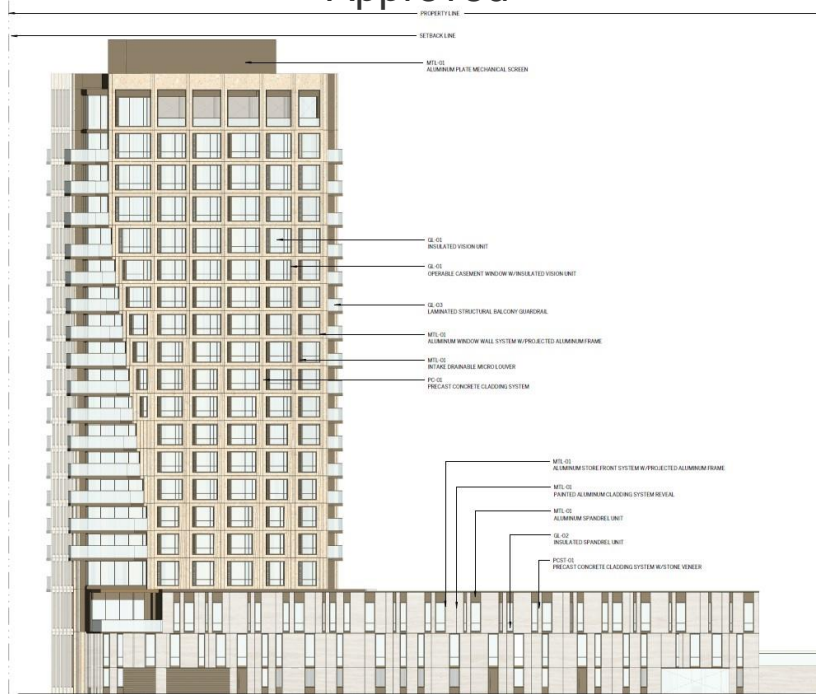


Proposed

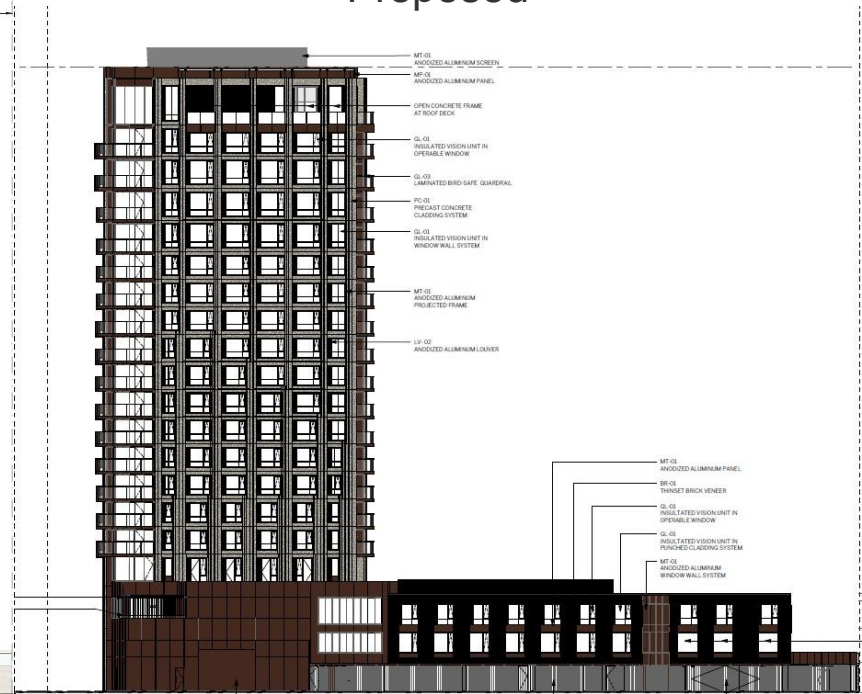


2300 Calle de Luna

Approved

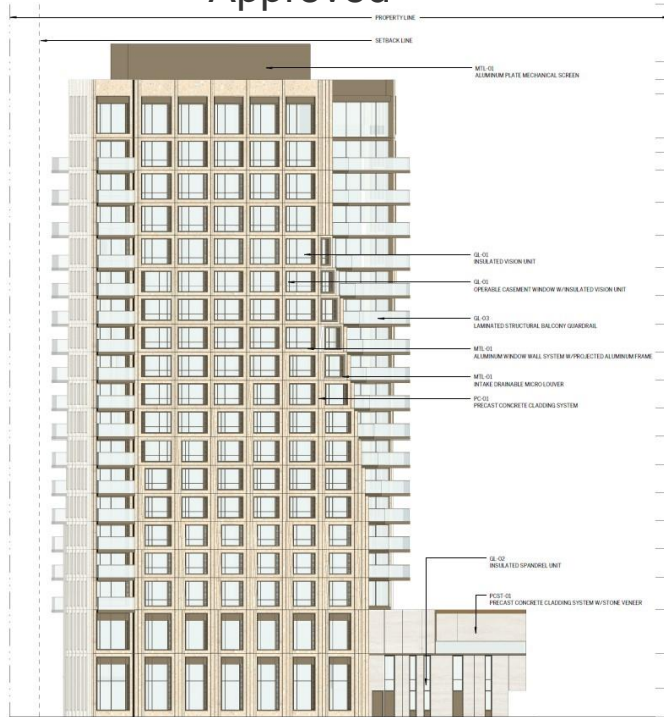


Proposed

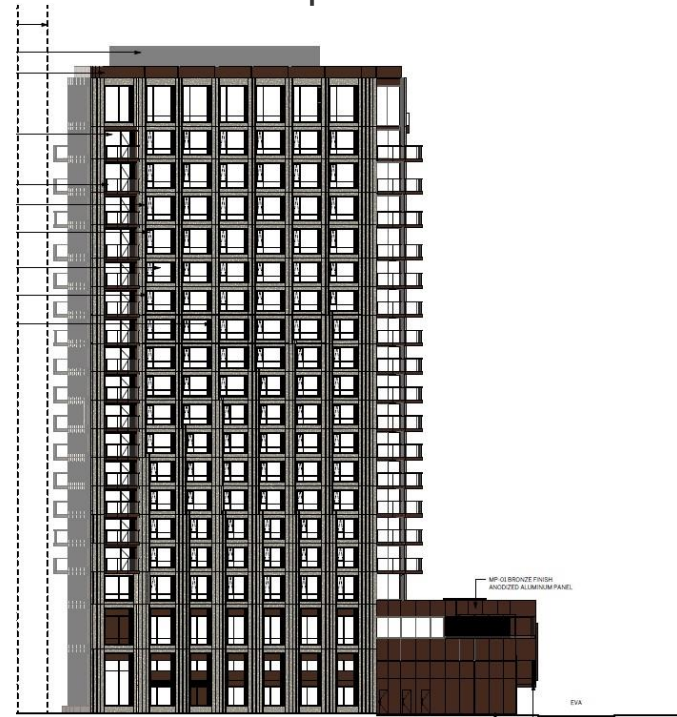


2300 Calle de Luna

Approved



Proposed



2300 Calle de Luna

Approved



Proposed



2300 Calle de Luna

Modification of Conditions of Approval

- Change Condition C10 to allow Saturday construction activity to be confined to 9:00am to 6:00pm. For work required to be performed outside of the approved hours, the developer will advise the City two weeks in advance of such work, and seek approval from the Director of Community

2300 Calle de Luna

Recommendation

- Approval of the Modifications to Previously Approved Architectural Review and Conditions of Approval.

City of Santa Clara



**City of
Santa Clara**
The Center of What's Possible

