

A-0	SITE PLAN
CG-1	CAL GREEN
A-1	EXISTING FLOOR
A-2	NEW FLOOR PLAN
A-3	EXISTING ELEVATION
A-4	NEW ELEVATION
A-5	ROOF PLAN
S-2	FLOOR AND CEILING FRAMING PLAN
S-3	FOUNDATION PLAN
S-4	STRUCTURAL DETAILS
E-1	ELECTRICAL PLAN

A-0

<p>City of Santa Clara Building Division 1500 Warburton Ave. Santa Clara, CA 95050 www.santariscacolora.org</p>	<p>Buildings Division: 408.516.3440 Email: Building@santariscacolora.org Permit Center: 408.615-2420 Email: PermitCenter@santariscacolora.org Automated Inspection Scheduling System: 408.615-2420</p>
<p align="center">2016 CALIFORNIA GREEN BUILDING STANDARD CODE (CGC) RESIDENTIAL CHECKLIST</p>	
<p><i>New residential buildings shall be designed to include the green building mandatory measures specified in this checklist. This checklist shall also be applicable to existing buildings where the addition or alteration increases the building's conditioned area, volume, or size. The requirements shall apply only to the specific area of addition or alteration.</i></p>	
<p>BUILDING PERMIT NO.: <u>BLD20</u> ADDRESS:</p>	<p align="center">MANDATORY MEASURES SPECIFIED (Please check below)</p>
<p align="center">Feature or Measure</p> <p>Storm water drainage and retention construction. A storm drain is developed and will be implemented to manage storm water drainage during construction per CGC 4.106.2.</p> <p>Grading and paving. Construction plans shall indicate how storm drainage or a drainage system will manage all surface water flows to keep water from entering buildings per CGC 4.106.3.</p> <p>Electric/Vehicle (EV) charging for new construction. Provide capability for electric vehicle charging in one- and two-family with attached private garages; and 3% of total parking spaces, as specified, for multifamily developments per CGC 4.106.4.</p>	<p align="center">Yes</p> <p align="center"><input type="checkbox"/></p>
<p align="center">ENERGY EFFICIENCY (CGC 4.201)</p>	
<p>Building meets or exceeds the requirements of the California Building Energy Efficiency Standard per CGC 4.201.1.</p>	<p align="center"><input type="checkbox"/></p>
<p align="center">WATER EFFICIENCY AND CONSERVATION</p>	
<p align="center">INDOOR WATER USE</p>	
<p>Water conserving plumbing fixtures and fittings. Plumbing fixtures (water closets and urinals) and fittings (faucets and showerheads) shall comply with the prescriptive requirements of Section 4.303.1.1 through 4.303.1.4.</p>	<p align="center"><input type="checkbox"/></p>
<p>Water closets. The effective flush volume of valves shall not exceed 1.28 gallons per flush (CGC 4.303.1.1).</p>	<p align="center"><input type="checkbox"/></p>
<p>Urinals. The effective flush volume of wall mounted urinals shall not exceed 0.725 gallons per flush, and all other urinals shall not exceed 0.5 gallons per flush (CGC 4.303.1.2).</p>	<p align="center"><input type="checkbox"/></p>
<p>Showerheads. The flow rate for single showerhead and multiple showerheads serving one shower shall not exceed 20 gallons per minute at 80 psi and shall be certified to the performance criteria of the U.S. EPA WaterSense Specification (CGC 4.303.1.3).</p>	<p align="center"><input type="checkbox"/></p>
<p>Handheld lavatory faucets. The flow rate shall be no more than 1.2 gallons per minute at 60 psi and less than 0.5 gallons per minute at 25 psi (CGC 4.303.1.4).</p>	<p align="center"><input type="checkbox"/></p>
<p>Lavatory faucets in common and public. The flow rate shall not exceed 0.5 gallons per minute at 60 psi (CGC 4.303.1.5).</p>	<p align="center"><input type="checkbox"/></p>
<p>Watering/Faucets. The flow rate shall not deliver more than 0.25 gallons per cycle (CGC 4.303.1.3.4).</p>	<p align="center"><input type="checkbox"/></p>
<p>Kitchen faucets. The flow rate shall not exceed 1.8 gallons per minute at 60 psi (CGC 4.303.1.4).</p>	<p align="center"><input type="checkbox"/></p>
<p>Standards for plumbing fixtures and fittings. Plumbing fixtures and fittings shall meet the applicable standards referenced in Table 7701.1 of the California Plumbing Code per CGC 4.303.2.</p>	

	BLD PERMIT NO.: □
<p align="center">OUTDOOR WATER USE (CGC 4.304) Outdoor potable water use in landscape areas. New residential developments with an aggregate landscape area equal to or greater than 500 square feet shall comply with CGC 4.304.1. □</p>	
<p align="center">ENHANCED DURABILITY AND REDUCED MAINTENANCE (CGC 4.406) Resident property. Resident property shall be constructed in accordance with the requirements in subdivision (a) at exterior walls shall be noted prior to closing construction contracts with cement mortar, concrete masonry, or similar masonry materials. The exterior walls shall be constructed in accordance with CGC 4.406.1. □</p>	
<p align="center">CONSTRUCTION WASTE REDUCTION/DISPOSAL/AND RECYCLING (CGC 4.408) Construction waste and demolition waste shall be recycled or reused a minimum of 65% of nonhazardous construction waste and demolition waste in accordance with CGC 4.408.1. For 4,408.2, or 4,408.4, or 4,408.5, or 4,408.6, or 4,408.7, or 4,408.8, or 4,408.9, or 4,409.1, or 4,409.2, or 4,409.3, or 4,409.4, or 4,409.5, or 4,409.6, or 4,409.7, or 4,409.8, or 4,409.9, or 4,410.1, or 4,410.2, or 4,410.3, or 4,410.4, or 4,410.5, or 4,410.6, or 4,410.7, or 4,410.8, or 4,410.9, or 4,411.1, or 4,411.2, or 4,411.3, or 4,411.4, or 4,411.5, or 4,411.6, or 4,411.7, or 4,411.8, or 4,411.9, or 4,412.1, or 4,412.2, or 4,412.3, or 4,412.4, or 4,412.5, or 4,412.6, or 4,412.7, or 4,412.8, or 4,412.9, or 4,413.1, or 4,413.2, or 4,413.3, or 4,413.4, or 4,413.5, or 4,413.6, or 4,413.7, or 4,413.8, or 4,413.9, or 4,414.1, or 4,414.2, or 4,414.3, or 4,414.4, or 4,414.5, or 4,414.6, or 4,414.7, or 4,414.8, or 4,414.9, or 4,415.1, or 4,415.2, or 4,415.3, or 4,415.4, or 4,415.5, or 4,415.6, or 4,415.7, or 4,415.8, or 4,415.9, or 4,416.1, or 4,416.2, or 4,416.3, or 4,416.4, or 4,416.5, or 4,416.6, or 4,416.7, or 4,416.8, or 4,416.9, or 4,417.1, or 4,417.2, or 4,417.3, or 4,417.4, or 4,417.5, or 4,417.6, or 4,417.7, or 4,417.8, or 4,417.9, or 4,418.1, or 4,418.2, or 4,418.3, or 4,418.4, or 4,418.5, or 4,418.6, or 4,418.7, or 4,418.8, or 4,418.9, or 4,419.1, or 4,419.2, or 4,419.3, or 4,419.4, or 4,419.5, or 4,419.6, or 4,419.7, or 4,419.8, or 4,419.9, or 4,420.1, or 4,420.2, or 4,420.3, or 4,420.4, or 4,420.5, or 4,420.6, or 4,420.7, or 4,420.8, or 4,420.9, or 4,421.1, or 4,421.2, or 4,421.3, or 4,421.4, or 4,421.5, or 4,421.6, or 4,421.7, or 4,421.8, or 4,421.9, or 4,422.1, or 4,422.2, or 4,422.3, or 4,422.4, or 4,422.5, or 4,422.6, or 4,422.7, or 4,422.8, or 4,422.9, or 4,423.1, or 4,423.2, or 4,423.3, or 4,423.4, or 4,423.5, or 4,423.6, or 4,423.7, or 4,423.8, or 4,423.9, or 4,424.1, or 4,424.2, or 4,424.3, or 4,424.4, or 4,424.5, or 4,424.6, or 4,424.7, or 4,424.8, or 4,424.9, or 4,425.1, or 4,425.2, or 4,425.3, or 4,425.4, or 4,425.5, or 4,425.6, or 4,425.7, or 4,425.8, or 4,425.9, or 4,426.1, or 4,426.2, or 4,426.3, or 4,426.4, or 4,426.5, or 4,426.6, or 4,426.7, or 4,426.8, or 4,426.9, or 4,427.1, or 4,427.2, or 4,427.3, or 4,427.4, or 4,427.5, or 4,427.6, or 4,427.7, or 4,427.8, or 4,427.9, or 4,428.1, or 4,428.2, or 4,428.3, or 4,428.4, or 4,428.5, or 4,428.6, or 4,428.7, or 4,428.8, or 4,428.9, or 4,429.1, or 4,429.2, or 4,429.3, or 4,429.4, or 4,429.5, or 4,429.6, or 4,429.7, or 4,429.8, or 4,429.9, or 4,430.1, or 4,430.2, or 4,430.3, or 4,430.4, or 4,430.5, or 4,430.6, or 4,430.7, or 4,430.8, or 4,430.9, or 4,431.1, or 4,431.2, or 4,431.3, or 4,431.4, or 4,431.5, or 4,431.6, or 4,431.7, or 4,431.8, or 4,431.9, or 4,432.1, or 4,432.2, or 4,432.3, or 4,432.4, or 4,432.5, or 4,432.6, or 4,432.7, or 4,432.8, or 4,432.9, or 4,433.1, or 4,433.2, or 4,433.3, or 4,433.4, or 4,433.5, or 4,433.6, or 4,433.7, or 4,433.8, or 4,433.9, or 4,434.1, or 4,434.2, or 4,434.3, or 4,434.4, or 4,434.5, or 4,434.6, or 4,434.7, or 4,434.8, or 4,434.9, or 4,435.1, or 4,435.2, or 4,435.3, or 4,435.4, or 4,435.5, or 4,435.6, or 4,435.7, or 4,435.8, or 4,435.9, or 4,436.1, or 4,436.2, or 4,436.3, or 4,436.4, or 4,436.5, or 4,436.6, or 4,436.7, or 4,436.8, or 4,436.9, or 4,437.1, or 4,437.2, or 4,437.3, or 4,437.4, or 4,437.5, or 4,437.6, or 4,437.7, or 4,437.8, or 4,437.9, or 4,438.1, or 4,438.2, or 4,438.3, or 4,438.4, or 4,438.5, or 4,438.6, or 4,438.7, or 4,438.8, or 4,438.9, or 4,439.1, or 4,439.2, or 4,439.3, or 4,439.4, or 4,439.5, or 4,439.6, or 4,439.7, or 4,439.8, or 4,439.9, or 4,440.1, or 4,440.2, or 4,440.3, or 4,440.4, or 4,440.5, or 4,440.6, or 4,440.7, or 4,440.8, or 4,440.9, or 4,441.1, or 4,441.2, or 4,441.3, or 4,441.4, or 4,441.5, or 4,441.6, or 4,441.7, or 4,441.8, or 4,441.9, or 4,442.1, or 4,442.2, or 4,442.3, or 4,442.4, or 4,442.5, or 4,442.6, or 4,442.7, or 4,442.8, or 4,442.9, or 4,443.1, or 4,443.2, or 4,443.3, or 4,443.4, or 4,443.5, or 4,443.6, or 4,443.7, or 4,443.8, or 4,443.9, or 4,444.1, or 4,444.2, or 4,444.3, or 4,444.4, or 4,444.5, or 4,444.6, or 4,444.7, or 4,444.8, or 4,444.9, or 4,445.1, or 4,445.2, or 4,445.3, or 4,445.4, or 4,445.5, or 4,445.6, or 4,445.7, or 4,445.8, or 4,445.9, or 4,446.1, or 4,446.2, or 4,446.3, or 4,446.4, or 4,446.5, or 4,446.6, or 4,446.7, or 4,446.8, or 4,446.9, or 4,447.1, or 4,447.2, or 4,447.3, or 4,447.4, or 4,447.5, or 4,447.6, or 4,447.7, or 4,447.8, or 4,447.9, or 4,448.1, or 4,448.2, or 4,448.3, or </p>	

<p align="center">ENVIRONMENTAL COMFORT (CGC 4.907)</p> <p>Heating and air-conditioning system shall be sized, designed and have their equipment permitted using the following methods per CGC 4.507.2:</p> <ul style="list-style-type: none"> 1. Heat Loss/Heat Gain values in accordance with ANSI/ACCA 2 Manual J-2011 or equivalent; 2. Duct systems are sized according to ANSI/ACCA 1, Manual D-2014 or equivalent; 3. Select heating and cooling equipment in accordance with ANSI/ACCA 3, Manual S-2014 or equivalent. 		<input type="checkbox"/>
<p align="center">INSTALLER AND SPECIAL INSPECTOR QUALIFICATION (CGC 702)</p> <p>Installer training. HVAC system installers shall be trained and certified in the proper installation of HVAC systems including ducts and equipment by a recognized training or certification program per CGC 702.1.</p> <p>Special inspection. Special inspectors employed by the enforcing agency must be qualified and able to demonstrate competence in the discipline they are inspecting per CGC 702.2.</p>		<input type="checkbox"/>
<p align="center">VERIFICATION (CGC 703)</p> <p>Upon request, verification of compliance with this code may include construction documents, plans, specifications, builder or installer certification, inspection reports, or other methods acceptable to the building department which will show substantial conformance per CGC 703.1.</p>		<input type="checkbox"/>

<p>Responsible Designer's Declaration Statement</p> <p>I hereby certify that this project has been designed to meet the requirements of the 2010 California Green Building Standards Code.</p>	<p>Contractor Declaration Statement</p> <p>I hereby certify, as the builder or installer under the permit listed herein, that this project will be constructed to meet the requirements of the California Green Building Standards Code.</p>
Name: _____	Name: _____
Signature: _____	Signature: _____
Date: _____	Date: _____
Company: _____	License: _____
Address: _____	Address: _____
City: _____ State: _____ Zip: _____	City: _____ State: _____ Zip: _____

"I:\BQ\B\B\A\FORMS\Informational\RGS1 Green Building Residential Checklist_2010 CGC_11-2016.doc"

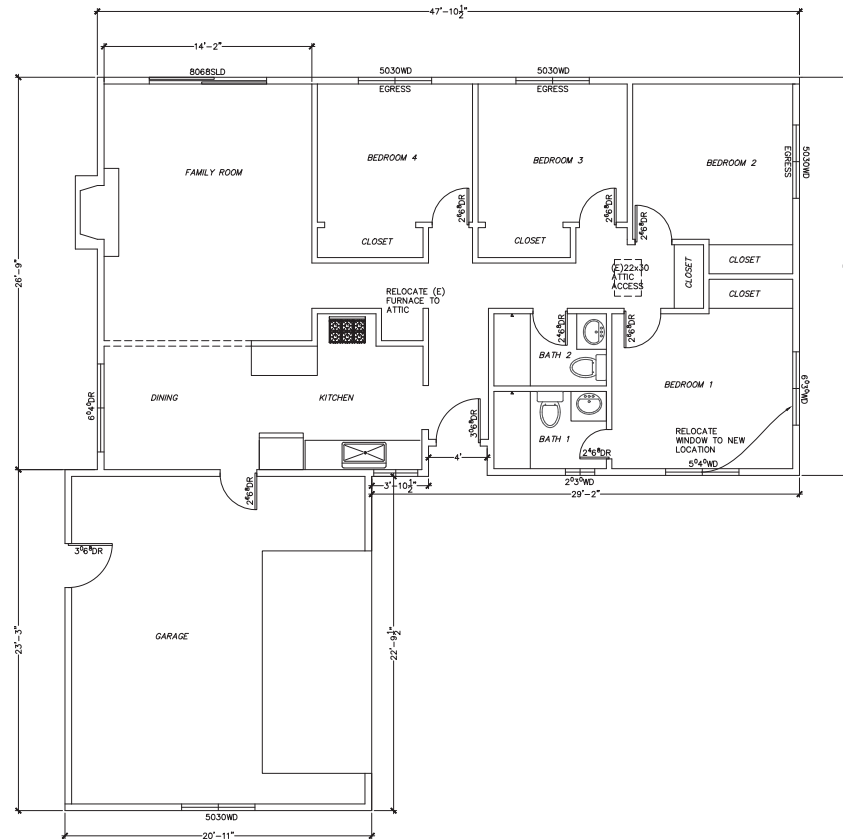
Page 3 of 3

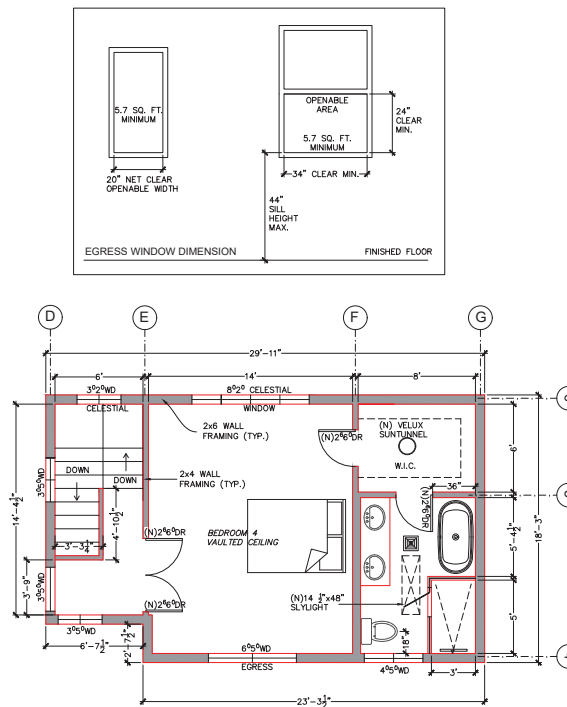
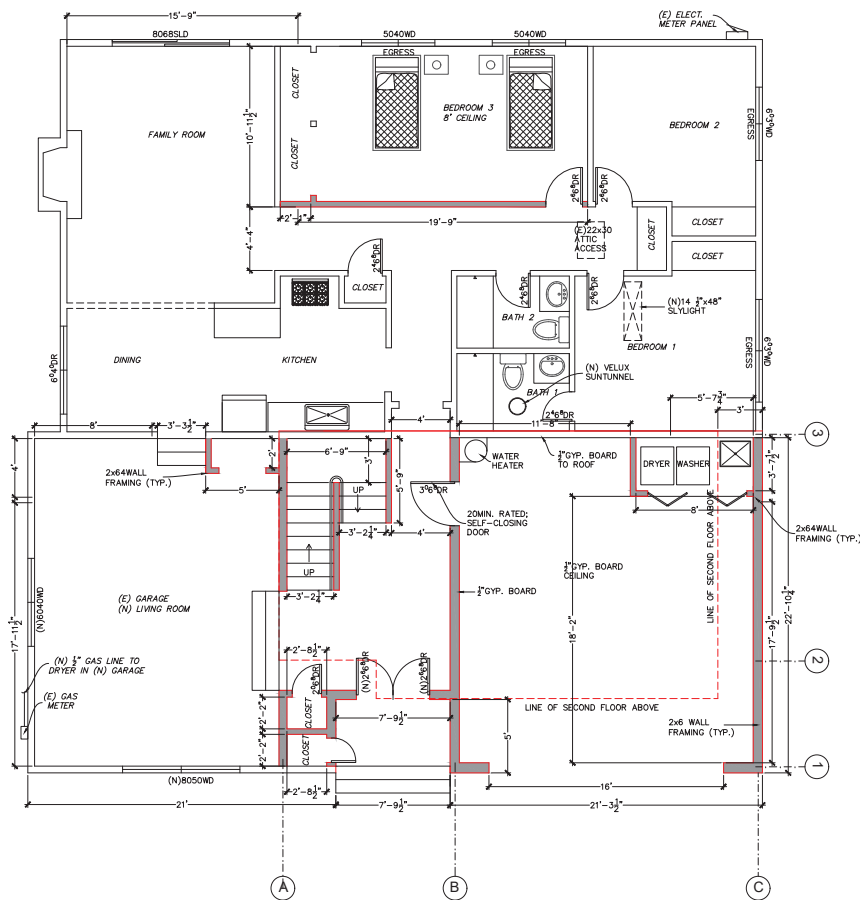
YOUNG H. TRAN, P.E.
1754 TECHNOLOGY DRIVE SUITE 120C
SAN JOSE, CA 95110
650.518.1168
YOUNG_H_TRAN@YAHOO.COM

INTERIOR REMODEL & ADDITION
2110 COOLIDGE DRIVE
SANTA CLARA, CA 95051

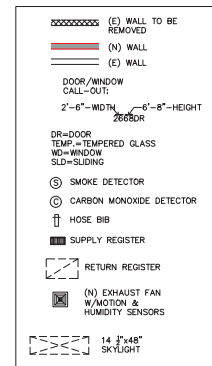
CAL GREEN REQUIREMENT	
DESIGN BY:	YH
DRAWN BY:	YH
CHECKED BY:	YH
DATE:	8/16/2021
SCALE:	AS SHOWN

CG-1





- NOTES:
1. ALL NEW BEDROOMS AND HALLWAYS MUST HAVE HARDWIRE SMOKE DETECTORS WITH BATTERY BACK UP. WHEN THE CEILING HEIGHT OF A ROOM OPEN TO THE HALLWAY SERVING THE BEDROOM EXCEEDS THAT OF THE HALLWAY BY 2'4" OR MORE, SMOKE DETECTORS SHALL BE INSTALLED IN THE HALLWAY AND IN THE ADJACENT ROOM.
 2. ALL ATTIC & UNDER FLOOR AREAS SHALL HAVE CROSS VENTILATION EQUAL TO 1/60 OF THE ATTIC AREA. ALL VENT OPENING MUST BE COVERED WITH 1" CORROSION-RESISTANT WIRE MESH.
 3. SHOWER WALLS SHALL HAVE A SMOOTH, HARD NONABSORBENT SURFACE SUCH AS PORTLAND CEMENT, CONCRETE, CERAMIC TILE TO A HEIGHT OF NOT LESS THAN 72" ABOVE THE DRAIN INLET.
 4. BATHROOM FANS SHALL PROVIDE 5 AIR CHANGES PER HOUR MIN. & INTERCONNECT TO A MOISTURE SENSOR.
 5. SHOWERS AND TUB-SHOWER SHALL HAVE PRESSURE BALANCE OR THERMOSTATIC MIXING VALVE.
 6. ALL DUCTS SHALL BE SIZED PER CHAPTER 6 OF THE MECHANICAL CODE.
 7. LANDINGS AT EXTERIOR DOORS SHALL NOT BE MORE THAN 7.75" BELOW THE DOOR'S THRESHOLD.
 8. GLAZING IN ALL FIXED AND OPERABLE PANELS OF SWING, SLIDING, BI-FOLD DOORS, SHOWER AND BATHROOM WINDOWS SHALL BE TEMPERED SAFETY GLAZING.
 9. ALL TOILETS EFFECTIVE FLUSH VOLUME SHALL NOT EXCEED 1.20GAL. PER FLUSH.
 10. ALL LAVATORY FAUCETS SHALL NOT EXCEED 1.5GPM.
 11. ALL SHOWER HEADS SHALL NOT EXCEED 20GPM.
 12. KITCHEN FAUCET SHALL NOT EXCEED 1.8GPM.



HEADER SCHEDULE -UON					
OPENING WIDTH	4'	6'	8'	10'	12'
HEADER	4x4	4x6	4x8	4x10	4x12
POST SUPPORT	2x4	2x4	2x4	3x4	3x4

YOUNG H. TRAN, P.E.
175A EDINBOROUGH DRIVE, SUITE 122A
SAN JOSE, CA 95110
YOUNG_H_TRAN@YHO.COM

INTERIOR REMODEL & ADDITION
2110 COOLIDGE DRIVE
SANTA CLARA, CA 95051

FLOOR PLANS

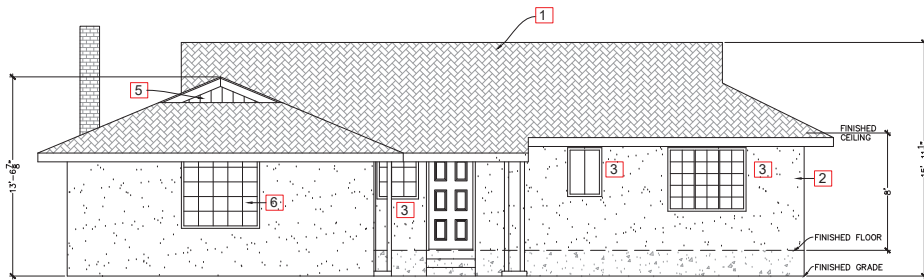
DESIGN BY: YHT

DRAWN BY: YHT

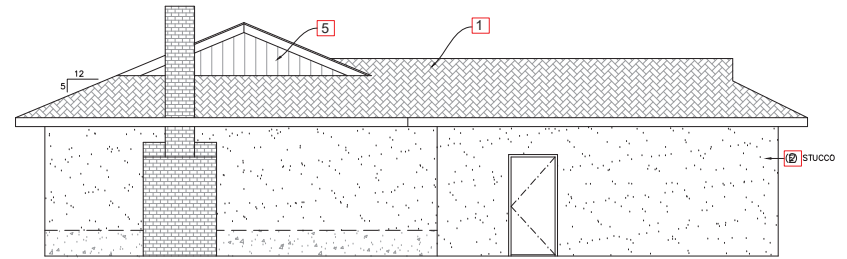
CHECKED BY: YHT

DATE: 8/16/2021

SCALE: AS SHOWN



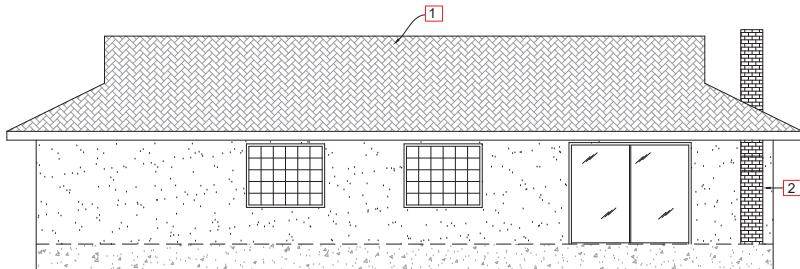
FRONT ELEVATION (EAST)
SCALE: 3/8"=1'



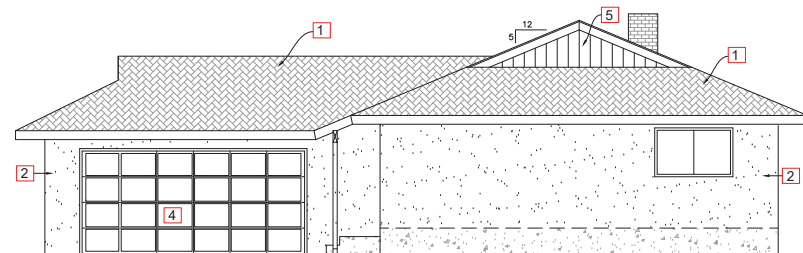
LEFT ELEVATION (SOUTH)
SCALE: 3/8"=1'

KEY NOTES:

- 1 (E) ASPHALT SHINGLE ROOF
- 2 (E) STUCCO FINISHED
- 3 (E) WINDOW TO BE REMOVED
- 4 (E) GARAGE DOOR TO BE REMOVED
- 5 (E) SIDING FINISHED
- 6 (E) WINDOW - REMOVE & REPLACE WITH LARGER WINDOW



REAR ELEVATION (WEST)
SCALE: 3/8"=1'



RIGHT ELEVATION (NORTH)
SCALE: 3/8"=1'

YOUNG H. TRAN, P.E.
1745 EDWARDS DRIVE, SUITE 122A
SAN JOSE, CA 95110
YOUNG_H.TRAN@YHQ.COM

INTERIOR REMODEL & ADDITION
2110 COOLIDGE DRIVE
SANTA CLARA, CA 95051

EXISTING
ELEVATION

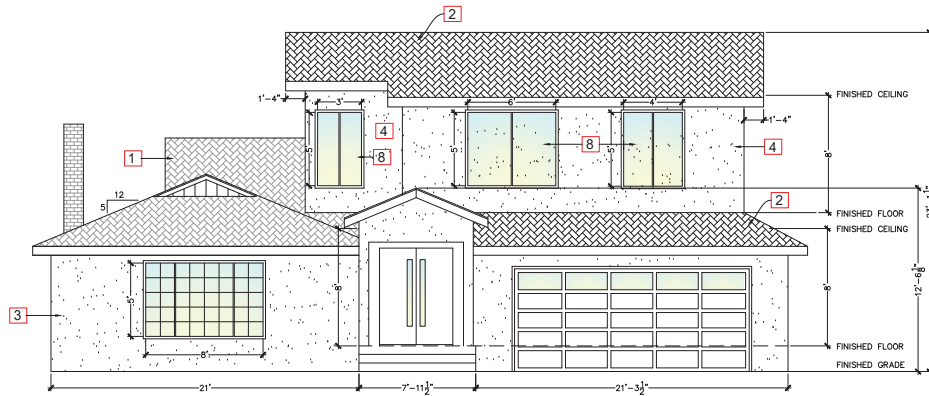
DESIGN BY: YHT

DRAWN BY: YHT

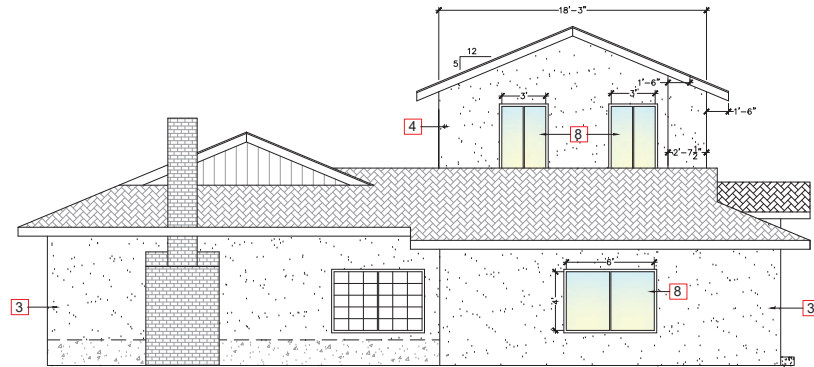
CHECKED BY: YHT

DATE: 8/16/2021

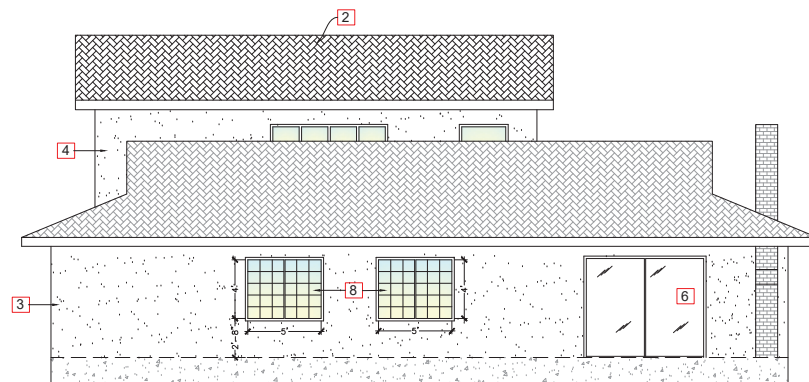
SCALE: AS SHOWN



FRONT ELEVATION (EAST)
SCALE: 3/8"=1'

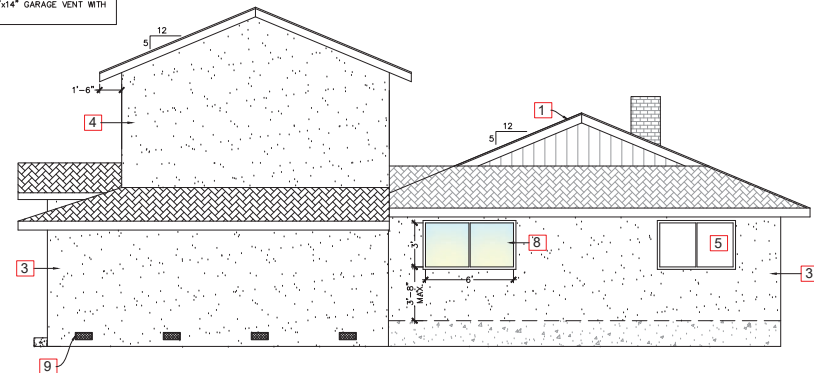


LEFT ELEVATION (SOUTH)
SCALE: 3/8"=1'

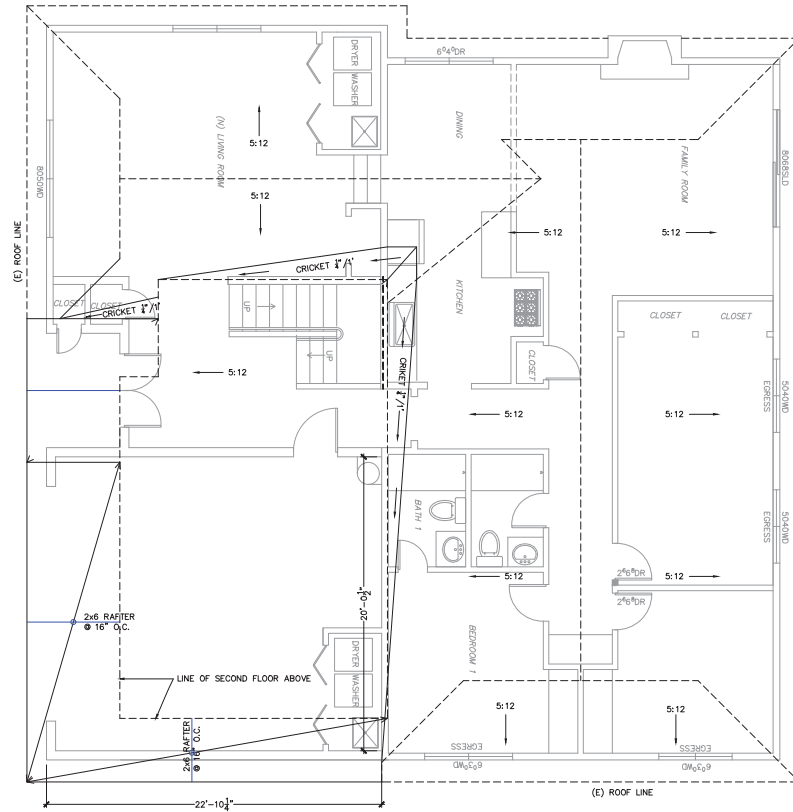


REAR ELEVATION (WEST)
SCALE: 3/8"=1'

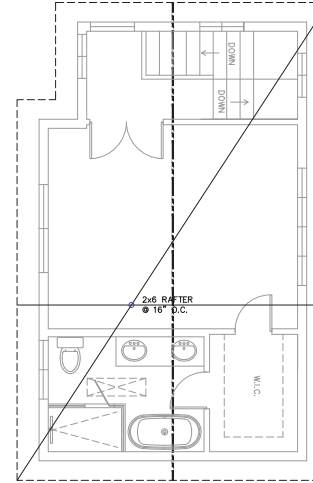
- KEY NOTES:**
- 1 (E) ASPHALT SHINGLE ROOF
 - 2 (N) ASPHALT SHINGLE ROOF, MATCH (E) PATTERN AND COLOR
 - 3 (E) STUCCO FINISHED
 - 4 (N) 3-LAYER 5/8" THICK MIN. STUCCO FINISHED, MATCH (E) PATTERN AND COLOR
 - 5 (E) WINDOW
 - 6 (E) PATIO DOOR
 - 7 (E) DOOR
 - 8 (N) WINDOW
 - 9 PROVIDE FOUR (4) 6"x14" GARAGE VENT WITH 1/2" GALV. SCREEN



RIGHT ELEVATION (NORTH)
SCALE: 3/8"=1'



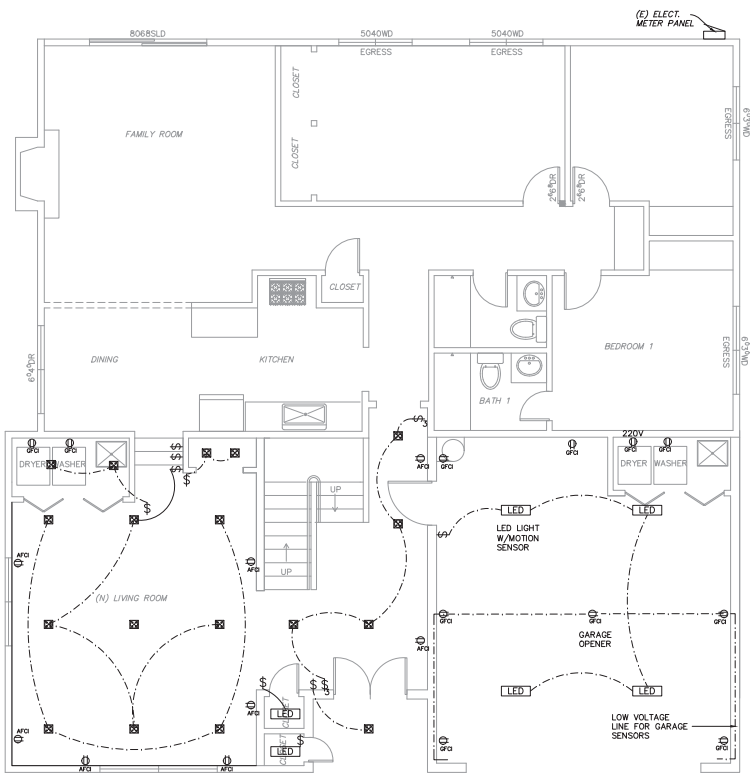
LOWER ROOF PLAN
SCALE: 1/8"=1'



SECOND FLOOR ROOF PLAN
SCALE: 1/8"=1'

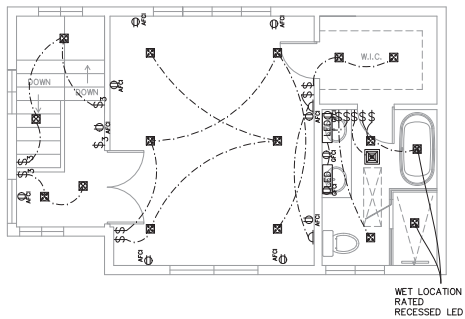
INTERIOR REMODEL & ADDITION
2110 COOLIDGE DRIVE
SANTA CLARA, CA 95051

ROOF PLAN
DESIGN BY: YHT
DRAWN BY: YHT
CHECKED BY: YHT
DATE: 8/16/2021
SCALE: AS SHOWN



FIRST FLOOR LIGHTING & ELECTRICAL PLAN

SCALE: 1/4"=1'



SECOND FLOOR LIGHTING & ELECTRICAL PLAN

SCALE: 1/4"=1'

NOTES:

1. ALL NEW CIRCUITS REQUIRE AFCI SHALL BE PROVIDED WITH A COMBINATION TYPE AFCI CIRCUIT BREAKER.
2. AFCI PROTECTION FOR THE ENTIRE BRANCH CIRCUIT SUPPLYING ANY OUTLETS OR DEVICES IN KITCHEN, FAMILY ROOM, DINING ROOM, LIBRARIES, DEN, BEDROOMS, SUNROOMS, RECREATION ROOM, CLOSET, LAUNDRY ROOM, HALLWAYS OR SIMILAR AREAS.
3. SMOKE AND CARBON MONOXIDE ALARMS SHALL BE HARD WIRED AND HAVE AFCI PROTECTION WITH A CIRCUIT BREAKER.
4. ALL AFCI CONTROLS (BREAKER TEST BUTTONS AND OUTLET TEST BUTTONS) MUST BE ACCESSIBLE.
5. A MINIMUM OF ONE 20A CIRCUIT IS REQUIRED FOR BATHROOM RECEPTACLES. THIS CIRCUIT CAN HAVE NO OTHER OUTLETS INCLUDING LIGHTS. IF A 20A CIRCUIT SERVES ONLY ONE BATHROOM, LIGHTS AND FANS CAN BE ON THAT CIRCUIT.
6. HYDRO-MASSAGE TUBS SHALL HAVE A DEDICATED CIRCUIT AND READILY ACCESSIBLE GFCI PROTECTION. AN ACCESS DOOR IS REQUIRED AND MUST BE LARGE ENOUGH FOR MOTOR AND PUMP REMOVAL. CORD-CONNECTED EQUIPMENT MUST HAVE THE RECEPTACLE FACING THE OPENING AND BE NO MORE THAN 12" BEHIND THE ACCESS DOOR.
7. RECESSED LIGHT FIXTURES IN SHOWER ENCLOSURES MUST BE LISTED FOR DAMP OR WET LOCATION.
8. ALL INSTALLED LIGHTING SHALL BE HIGH EFFICACY.
9. AT LEAST ONE LIGHT IN BATHROOM SHALL BE CONTROLLED BY A VACANCY SENSOR (MANUAL-ON, AUTOMATIC-OFF).
10. PROVIDE TWO 20A CIRCUITS MIN. FOR COUNTER TOP AND WALL RECEPTACLES IN KITCHEN, PANTRY AND DINING ROOM. BUILT-IN APPLIANCES SHALL BE ON SEPARATE CIRCUITS.
11. PROVIDE DEDICATED CIRCUITS FOR GARBAGE DISPOSAL, MICROWAVE, COMPACTOR AND DISHWASHER.
12. SERVICE DROP CONDUCTORS MUST HAVE A MINIMUM HEIGHT OF 12' ABOVE GROUND; 10' MIN. WHERE ACCESSIBLE ONLY TO PEDESTRIAN.
13. ONLY POWER CONDUCTORS ARE ALLOWED ON MAST. NO CABLE TV OR PHONE WIRES ALLOWED.

LEGENDS/SYMBOLS:

- | | | | |
|-----|-------------------------|---|---------------------------------|
| \$ | SWITCH | ○ | LED SURFACE MOUNT CEILING LIGHT |
| ⌚ | RECEPTACLE | ■ | HEAT REGISTER |
| ⌚ | GFCI RECEPTACLE | □ | RETURN AIR REGISTER |
| ⌚ | WEATHERPROOF RECEPTACLE | ✂ | CEILING FAN |
| LED | LED LIGHT SURFACE MOUNT | □ | LED RECESSED LIGHT |
| ⌚ | BATH ROOM EXHAUST FAN | ⌚ | WATER PROOF OUTDOOR OUTLET |
| ○ | EXTERIOR LIGHT | ⌚ | CABLE/SATELLITE JACK |
| ⌚ | PHONE & CATS DATA | ⊙ | SMOKE DETECTOR |
| ⌚ | WALL MOUNT LED LIGHT | ⊙ | CO DETECTOR |

INTERIOR REMODEL & ADDITION
2110 COOLIDGE DRIVE
SANTA CLARA, CA 95051

ELECTRICAL

DESIGN BY: YHT

DRAWN BY: YHT

CHECKED BY: YHT

DATE: 8/16/2021

SCALE: AS SHOWN